

Converting Colors

HunterLab(67.8941, 10.7481,
10.0971)

Have a look what the booklet for
HunterLab(67.8941, 10.7481,
10.0971) contains.

HunterLab(67.9794, 10.4077, 10.1847)	3
<i>Conversions</i>	4
<i>Details</i>	6
<i>Harmonies</i>	12
<i>Previews</i>	24
<i>Color Blindness Simulation</i>	28
<i>CSS Examples</i>	31

Color

**HunterLab(67.9794, 10.4077,
10.1847)**

Conversions

Conversions Part 1

Format	Color
Hex	D6ABA7
RGB	214, 171, 167
RGB Percent	84%, 67%, 65%
CMY	0.1608, 0.3294, 0.3451
CMYK	0.00, 0.20, 0.22, 0.16
HSL	5°, 36%, 75%
HSV	5°, 22%, 84%
XYZ	49.2695, 46.2120, 42.8823
YIQ	183.4010, 26.9120, 7.8720

Conversions

Conversions Part 2

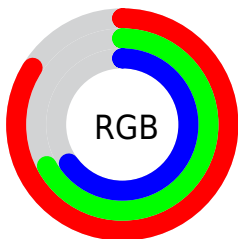
Format	Color
R _Y B	214, 171, 167
Decimal	14068647
CIE Lab	73.68, 15.09, 8.03
CIE LCh	74, 17.088, 28.016
Yxy	46.2141, 0.3561, 0.3340
Android (android.graphics.Color)	4292258727 (0xFFD6ABA7)
YUV	183.4010, -8.0857, 26.8353
Hunter-Lab	67.9794, 10.4077, 10.1847

Details

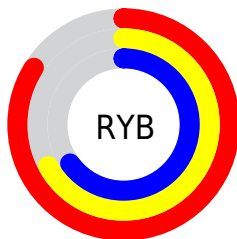
The HunterLab color **67.9794, 10.4077, 10.1847** is a light color, and the websafe version is hex **CC9999**. A complement of this color would be **76.9169, -15.9711, -1.9230**, and the grayscale version is **69.0079, -3.6821, 3.7493**.

A 20% lighter version of the original color is **89.9592, 4.5267, 9.9648**, and **46.6930, 9.9949, 8.3516** is the 20% darker color. If you saturate the color by 10%, you get **62.1534, 17.6671, 12.8215**, and if you desaturate by 10%, it is **74.1782, 3.4816, 7.5598**.

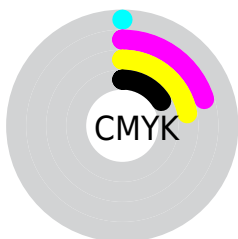
Distribution



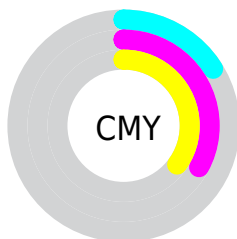
- Red (84%)
- Green (67%)
- Blue (65%)



- Red (84%)
- Yellow (67%)
- Blue (65%)



- Cyan (0%)
- Magenta (20%)
- Yellow (22%)
- Black (16%)



- Cyan (16%)
- Magenta (33%)
- Yellow (35%)

Brightness & Saturation Gradients

These gradients show how the HunterLab color 67.9794, 10.4077, 10.1847 changes by changing the brightness by 10 percent. The first figure shows a shift by +10% for each color and the second figure -10%.

Similar to the brightness gradients but the following saturation gradients show a change of the HunterLab color 67.9794, 10.4077, 10.1847 by changing the saturation by 10% instead.

67.9794, 10.4077,
10.1847

67.9794, 10.4077,
10.1847

192.7871, 9.1899,
19.9187

56.9340, 10.2537,
9.1718

91.9453, 10.5030,
12.2463

46.5602, 10.0230,
8.1649

104.8017, 10.4612,
13.2963

36.9065, 9.7023,
7.1604

118.2072, 10.3653,
14.3608

28.0312, 9.2773,
6.1507

132.1400, 10.2191,
15.4405

20.0097, 8.7285,
5.1227

146.5808, 10.0259,
16.5359

12.9450, 8.0286,
4.0520

161.5125, 9.7884,

6.3865, 9.9517,

17.6473

4.4705

176.9193, 9.5090,
18.7749

0.0000, NaN, NaN

0.0000, NaN, NaN

■ 67.9794, 10.4077,
10.1847

■ 67.9794, 10.4077,
10.1847

■ 62.1534, 17.6671,
12.8215

■ 74.1782, 3.4816,
7.5598

■ 56.7616, 25.2414,
15.4302

■ 80.6915, -3.1166,
4.9613

■ 51.8850, 33.0328,
17.9460

■ 87.4780, -9.4192,
2.3971

■ 47.6152, 40.8332,
20.2633

■ 94.5027, -15.4623,
-0.1323

■ 44.0493, 48.2821,

■ 96.4553, -17.8958,

22.2340

0.9677

■ 41.2749, 54.8681,
23.6862

■ 39.3440, 60.0213,
24.4827

■ 38.3880, 62.7938,
24.7538

Harmonies

Analogous

The Analogous color harmony consists of three colors that are next to each other on the color wheel.



67.9810, 12.3398, 3.1946



67.9794, 10.4077, 10.1847



67.9810, 4.6617, 14.9205

Triad

The Triadic color harmony groups three colors that are evenly spaced from another and form a triangle on the color wheel.



67.9810, 10.4053, 10.1858



67.9810, -16.1235, 10.9648



67.9810, -4.1598, -12.5053

Complementary

The Complementary color scheme is a pair of colors which are on the opposite of each other on the color wheel.



67.9794, 10.4077, 10.1847



76.9169, -15.9711, -1.9230

Split Complementary

Split-complementary colors differ from the complementary color scheme. The scheme consists of three colors, the original color and two neighbors of the complement color.



67.9810, -11.5442, -9.8332



67.9794, 10.4077, 10.1847



67.9810, -18.2511, 4.2023

Square

The Square scheme is like the rectangle color scheme, but the four colors are evenly spaced on the color wheel.



67.9810, 10.4053, 10.1858



67.9810, -10.6669, 15.3326



67.9810, -16.6133, -3.4945



67.9810, 3.7033, -10.4380

Rectangle

The Rectangle color scheme consists of four colors that form a rectangle on the color wheel.



67.9794, 10.4077, 10.1847



67.9810, -0.4258, 16.4496



67.9810, -16.6133, -3.4945



67.9810, -6.7778, -12.1259

Sweetspot

The Sweet Spot groups the original color and five complimentary colors.



67.9810, 10.4053, 10.1858



94.2993, 0.2616, 7.6637



68.2579, 19.6551, -10.6052



43.4035, 0.3484, 3.6350

0.0000, NaN, NaN



46.2646, -2.4686, 2.5136

Same Dimension

The Same Dimension uses a secret algorithm to generate beautiful new colors.



67.9810, 10.4053, 10.1858



79.7872, 16.4445, 13.8031



74.7368, -1.5979, 17.0210



35.4811, 0.8310, 3.2280



29.9505, 48.4661, 19.3038



7.7547, 10.6232, 4.9644

Inverse Universe

The Inverse Universe completely reimagines the original color for something new.



76.9169, -15.9711, -1.9230



92.7197, -21.8262, -3.7460



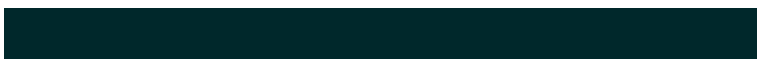
69.5954, -4.4345, -11.3915



37.3074, -4.5358, 0.7593



51.7789, -24.1675, -12.5484



12.9289, -6.1991, -2.7779

Previews

White Background



This preview shows how the HunterLab color 67.9794, 10.4077, 10.1847 looks on a white background.

Color Contrast Check

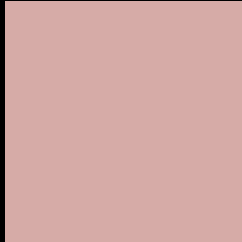
Large Text (above 18pt) WCAG AA × Fail

Any Text WCAG AA × Fail

Large Text (above 18pt) WCAG AAA × Fail

Any Text WCAG AAA × Fail

Black Background



This preview shows how the HunterLab color 67.9794, 10.4077, 10.1847 looks on a black background.

Color Contrast Check

Large Text (above 18pt) WCAG AA ✓ Pass

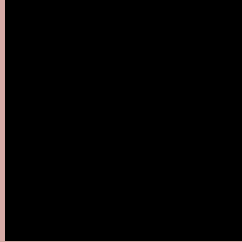
Any Text WCAG AA ✓ Pass

Large Text (above 18pt) WCAG AAA ✓ Pass

Any Text WCAG AAA ✓ Pass

If you want to check with other color combinations, try the [Color Contrast Checker](#).

HunterLab 67.9794, 10.4077, 10.1847 Background



This preview shows how black text looks on a background with the HunterLab color 67.9794, 10.4077, 10.1847.



This preview shows how white text looks on a background with the HunterLab color 67.9794, 10.4077, 10.1847.

Color Blindness Simulation

Color vision deficiency is a very complex topic, and I could not describe the different causes any better than Wikipedia does, so if you want to learn more, you should check out their [article about color blindness](#).

Dichromacy



Original Color

67.9794, 10.4077, 10.1847

Protanopia

68.2577, -3.1741, 8.1025

Deuteranopia

68.0077, 4.6487, 10.5356



Tritanopia

68.0825, 14.4383, 3.6643

Trichromacy



Original Color

67.9794, 10.4077, 10.1847

Protanomaly

67.9830, 1.8199, 8.7554

Deuteranomaly

68.1434, 6.5663, 10.7153

Tritanomaly

68.0961, 12.7742, 5.9682

Monochromacy



Original Color

67.9794, 10.4077, 10.1847

Achromatopsia

68.8136, -3.6717, 3.7388

Achromatomaly

68.4718, 0.8850, 6.1902

CSS Examples

Text

The CSS property to change the color of the text to HunterLab 67.9794, 10.4077, 10.1847 is called "color". The color property can be set on classes, ids or directly on the HTML element.

This example shows how text in the color `rgb(214, 171, 167)` looks like.

```
.text, #text, p{  
    color:rgb(214, 171, 167)  
}
```

If you want to add a text shadow in that color use the text-shadow property, you can generate a text shadow directly with our [CSS Text Shadow Generator](#).

Here you see how black text with a 4 pixel rgb(214, 171, 167) colored shadow looks like.

```
.shadow{ text-shadow: 4px 4px 2px rgb(214, 171, 167) }
```

Border

The CSS property to change the border of an element to HunterLab 67.9794, 10.4077, 10.1847 is called "border". The border property can be set on classes, ids or directly on the HTML element.

This example shows the color as border, it can be applied via the CSS property "border" or "border-color".

```
.border, #border, table{ border:4px solid rgb(214, 171, 167) }
```


If only the border color should be changed use the property `border-color`.

```
.border{ border-color:rgb(214, 171, 167) }
```

If you want to add a box shadow in that color use:

Here you see how a box with a 4 pixel `rgb(214, 171, 167)` colored shadow looks like.

```
.boxshadow{ -moz-box-shadow:4px 4px 4px  
4px rgb(214, 171, 167); -webkit-box-  
shadow:4px 4px 4px 4px rgb(214, 171, 167);  
box-shadow:4px 4px 4px 4px rgb(214, 171,  
167) }
```

Background

The CSS property to change the background color of an element to HunterLab 67.9794, 10.4077, 10.1847 is called "background". The background property can be set on classes, ids or directly on the HTML element.

```
.background, #background, body{  
background: rgb(214, 171, 167) }
```

If only the background color should be changed can be used:

```
.background{ background-color: rgb(214,  
171, 167) }
```

This example shows the color as background, it is applied via the CSS property "background".

To optimize and compress your CSS code, you can use our [online CSS compressor and optimizer](#) based on csstidy. If you want to create a linear or radial gradient as background or border, check our [CSS Gradient Generator](#).

Hey! You found this booklet interesting? Support Converting Colors with the new Membership Option!

The pro membership hides all ads, plus gives you double the colors in the color bucket, and more awesome pro features!

[Learn more, Memberships starting at \\$2.50/m!](#)

**Follow me
on Twitter!**

@ConvertingColor