

Converting Colors

HunterLab(67.9337, 5.2032,
5.7124)

Have a look what the booklet for
HunterLab(67.9337, 5.2032, 5.7124)
contains.

HunterLab(68.0087, 5.2711, 5.7364)	3
<i>Conversions</i>	4
<i>Details</i>	6
<i>Harmonies</i>	12
<i>Previews</i>	24
<i>Color Blindness Simulation</i>	28
<i>CSS Examples</i>	31

Color

**HunterLab(68.0087, 5.2711,
5.7364)**

Conversions

Conversions Part 1

Format	Color
Hex	C9AFB1
RGB	201, 175, 177
RGB Percent	79%, 69%, 69%
CMY	0.2118, 0.3137, 0.3059
CMYK	0.00, 0.13, 0.12, 0.21
HSL	355°, 19%, 74%
HSV	355°, 13%, 79%
XYZ	47.3532, 46.2518, 48.0267
YIQ	183.0020, 14.8540, 6.1340

Conversions

Conversions Part 2

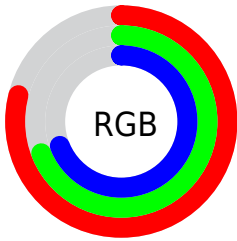
Format	Color
R _Y B	201, 175, 177
Decimal	13217713
CIE Lab	73.71, 9.70, 2.43
CIE LCh	74, 9.998, 14.057
Yxy	46.2539, 0.3343, 0.3266
Android (android.graphics.Color)	4291407793 (0xFFC9AFB1)
YUV	183.0020, -2.9590, 15.7842
Hunter-Lab	68.0087, 5.2711, 5.7364

Details

The HunterLab color $68.0087, 5.2711, 5.7364$ is a light color, and the websafe version is hex $CC9999$. A complement of this color would be $74.1701, -12.1699, 2.2952$, and the grayscale version is $68.8234, -3.6722, 3.7393$.

A 20% lighter version of the original color is $91.8123, 3.6584, 6.8551$, and $46.7164, 5.1865, 4.6761$ is the 20% darker color. If you saturate the color by 10%, you get $61.8972, 12.8089, 7.1872$, and if you desaturate by 10%, it is $74.4717, -1.9968, 4.4858$.

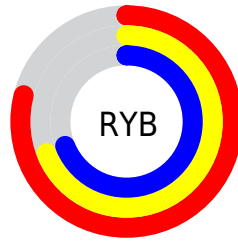
Distribution



Red (79%)

Green (69%)

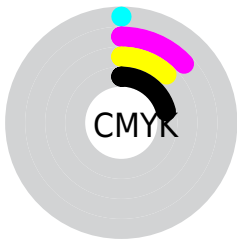
Blue (69%)



Red (79%)

Yellow (69%)

Blue (69%)

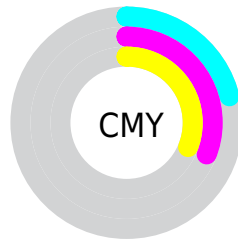


Cyan (0%)

Magenta (13%)

Yellow (12%)

Black (21%)



Cyan (21%)

Magenta (31%)

Yellow (31%)

Brightness & Saturation Gradients

These gradients show how the HunterLab color 68.0087, 5.2711, 5.7364 changes by changing the brightness by 10 percent. The first figure shows a shift by +10% for each color and the second figure -10%.

Similar to the brightness gradients but the following saturation gradients show a change of the HunterLab color 68.0087, 5.2711, 5.7364 by changing the saturation by 10% instead.

■ 68.0087, 5.2711,
5.7364

■ 68.0087, 5.2711,
5.7364

192.8285, 2.1434,
13.4000

■ 56.9616, 5.3746,
5.0155

■ 91.9776, 4.8868,
7.2641

■ 46.5860, 5.4147,
4.3220

104.8355, 4.6195,
8.0672

■ 36.9303, 5.3809,
3.6578

118.2424, 4.3064,
8.8958

■ 28.0529, 5.2614,
3.0231

132.1765, 3.9504,
9.7493

■ 20.0291, 5.0400,
2.4178

146.6186, 3.5540,
10.6271

■ 12.9618, 4.6920,
1.8400

161.5515, 3.1195,

■ 6.4087, 6.2520,

11.5285

1.9194

176.9596, 2.6488,
12.4530

0.0000, NaN, NaN

0.0000, NaN, NaN

■ 68.0087, 5.2711,
5.7364

■ 68.0087, 5.2711,
5.7364

■ 61.8972, 12.8089,
7.1872

■ 74.4717, -1.9968,
4.4858

■ 56.1972, 20.6070,
8.8584

■ 81.2305, -9.0042,
3.4054

■ 50.9907, 28.5850,
10.7631

■ 88.2460, -15.7821,
2.4709

■ 46.3743, 36.5556,
12.8854

■ 95.3504, -22.1617,
1.4988

■ 42.4575, 44.1701,

■ 95.4765, -21.4488,

15.1598

-0.2938

■ 39.3486, 50.8962,
17.4496

■ 37.1285, 56.0986,
19.5481

■ 35.8102, 59.2740,
21.2273

■ 35.2893, 60.5354,
22.0180

Harmonies

Analogous

The Analogous color harmony consists of three colors that are next to each other on the color wheel.



68.0102, 5.1889, 1.3215



68.0087, 5.2711, 5.7364



68.0102, 2.9197, 9.3601

Triad

The Triadic color harmony groups three colors that are evenly spaced from another and form a triangle on the color wheel.



68.0102, 5.2691, 5.7375



68.0102, -9.7448, 9.5407



68.0102, -6.0735, -5.0037

Complementary

The Complementary color scheme is a pair of colors which are on the opposite of each other on the color wheel.



68.0087, 5.2711, 5.7364



74.1701, -12.1699, 2.2952

Split Complementary

Split-complementary colors differ from the complementary color scheme. The scheme consists of three colors, the original color and two neighbors of the complement color.



68.0102, -9.9457, -2.4884



68.0087, 5.2711, 5.7364



68.0102, -12.0260, 5.9994

Square

The Square scheme is like the rectangle color scheme, but the four colors are evenly spaced on the color wheel.



68.0102, 5.2691, 5.7375



68.0102, -5.7926, 11.4539



68.0102, -12.0986, 1.6015



68.0102, -1.4450, -5.0857

Rectangle

The Rectangle color scheme consists of four colors that form a rectangle on the color wheel.



68.0087, 5.2711, 5.7364



68.0102, 0.3274, 10.9215



68.0102, -12.0986, 1.6015



68.0102, -7.5039, -4.4076

Sweetspot

The Sweet Spot groups the original color and five complimentary colors.



68.0102, 5.2691, 5.7375



96.4739, -1.5627, 6.0416



68.5554, 8.6081, -5.3963



44.3297, -0.3918, 2.8500

0.0000, NaN, NaN



46.2646, -2.4686, 2.5136

Same Dimension

The Same Dimension uses a secret algorithm to generate beautiful new colors.



68.0102, 5.2691, 5.7375



86.3027, 10.1013, 8.1013



71.1069, -0.5525, 9.9866



32.6342, 1.2321, 2.4478



27.9920, 48.0367, 17.3161



6.1294, 10.5949, 3.2009

Inverse Universe

The Inverse Universe completely reimagines the original color for something new.



68.0102, 5.2691, 5.7375



86.3027, 10.1013, 8.1013



70.8745, -6.4822, -2.6678



32.6342, 1.2321, 2.4478



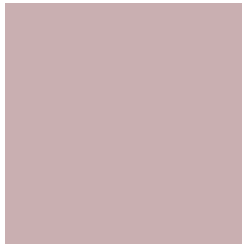
27.9920, 48.0367, 17.3161



6.1294, 10.5949, 3.2009

Previews

White Background



This preview shows how the HunterLab color 68.0087, 5.2711, 5.7364 looks on a white background.

Color Contrast Check

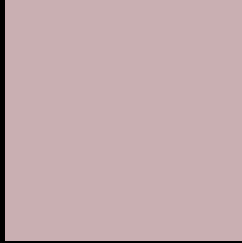
Large Text (above 18pt) WCAG AA × Fail

Any Text WCAG AA × Fail

Large Text (above 18pt) WCAG AAA × Fail

Any Text WCAG AAA × Fail

Black Background



This preview shows how the HunterLab color 68.0087, 5.2711, 5.7364 looks on a black background.

Color Contrast Check

Large Text (above 18pt) WCAG AA ✓ Pass

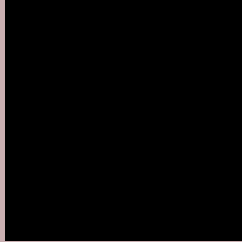
Any Text WCAG AA ✓ Pass

Large Text (above 18pt) WCAG AAA ✓ Pass

Any Text WCAG AAA ✓ Pass

If you want to check with other color combinations, try the [Color Contrast Checker](#).

HunterLab 68.0087, 5.2711, 5.7364 Background



This preview shows how black text looks on a background with the HunterLab color 68.0087, 5.2711, 5.7364.



This preview shows how white text looks on a background with the HunterLab color 68.0087, 5.2711,

5.7364.

Color Blindness Simulation

Color vision deficiency is a very complex topic, and I could not describe the different causes any better than Wikipedia does, so if you want to learn more, you should check out their [article about color blindness](#).

Dichromacy



Original Color

68.0087, 5.2711, 5.7364

Protanopia

68.0089, -2.0423, 4.2268

Deuteranopia

67.9070, 4.9306, 5.6135



Tritanopia

67.8466, 8.2647, 0.8669

Trichromacy



Original Color

68.0087, 5.2711, 5.7364

Protanomaly

67.9499, 0.7262, 4.6705

Deuteranomaly

67.9070, 4.9306, 5.6135

Tritanomaly

68.0056, 7.0861, 2.9705

Monochromacy



Original Color

68.0087, 5.2711, 5.7364

Achromatopsia

68.8136, -3.6717, 3.7388

Achromatomaly

68.5025, -0.2835, 4.3690

CSS Examples

Text

The CSS property to change the color of the text to HunterLab 68.0087, 5.2711, 5.7364 is called "color". The color property can be set on classes, ids or directly on the HTML element.

This example shows how text in the color `rgb(201, 175, 177)` looks like.

```
.text, #text, p{  
    color:rgb(201, 175, 177)  
}
```

If you want to add a text shadow in that color use the text-shadow property, you can generate a text shadow directly with our [CSS Text Shadow Generator](#).

Here you see how black text with a 4 pixel rgb(201, 175, 177) colored shadow looks like.

```
.shadow{ text-shadow: 4px 4px 2px rgb(201, 175, 177) }
```

Border

The CSS property to change the border of an element to HunterLab 68.0087, 5.2711, 5.7364 is called "border". The border property can be set on classes, ids or directly on the HTML element.

This example shows the color as border, it can be applied via the CSS property "border" or "border-color".

```
.border, #border, table{ border:4px solid rgb(201, 175, 177) }
```


If only the border color should be changed use the property `border-color`.

```
.border{ border-color:rgb(201, 175, 177) }
```

If you want to add a box shadow in that color use:

Here you see how a box with a 4 pixel `rgb(201, 175, 177)` colored shadow looks like.

```
.boxshadow{ -moz-box-shadow:4px 4px 4px  
4px rgb(201, 175, 177); -webkit-box-  
shadow:4px 4px 4px 4px rgb(201, 175, 177);  
box-shadow:4px 4px 4px 4px rgb(201, 175,  
177) }
```

Background

The CSS property to change the background color of an element to HunterLab 68.0087, 5.2711, 5.7364 is called "background". The background property can be set on classes, ids or directly on the HTML element.

```
.background, #background, body{  
background: rgb(201, 175, 177) }
```

If only the background color should be changed can be used:

```
.background{ background-color: rgb(201,  
175, 177) }
```

This example shows the color as background, it is applied via the CSS property "background".

To optimize and compress your CSS code, you can use our [online CSS compressor and optimizer](#) based on csstidy. If you want to create a linear or radial gradient as background or border, check our [CSS Gradient Generator](#).

Hey! You found this booklet interesting? Support Converting Colors with the new Membership Option!

The pro membership hides all ads, plus gives you double the colors in the color bucket, and more awesome pro features!

[Learn more, Memberships starting at \\$2.50/m!](#)

**Follow me
on Twitter!**

@ConvertingColor