

Converting Colors

HunterLab(67.9548, 12.5602,
9.1157)

Have a look what the booklet for
HunterLab(67.9548, 12.5602,
9.1157) contains.

HunterLab(68.1201, 12.4523, 9.0927)	3
<i>Conversions</i>	4
<i>Details</i>	6
<i>Harmonies</i>	12
<i>Previews</i>	24
<i>Color Blindness Simulation</i>	28
<i>CSS Examples</i>	31

Color

**HunterLab(68.1201, 12.4523,
9.0927)**

Conversions

Conversions Part 1

Format	Color
Hex	D9AAAA
RGB	217, 170, 170
RGB Percent	85%, 67%, 67%
CMY	0.1490, 0.3333, 0.3333
CMYK	0.00, 0.22, 0.22, 0.15
HSL	0°, 38%, 76%
HSV	0°, 22%, 85%
XYZ	50.2457, 46.4035, 44.3388
YIQ	184.0530, 28.0120, 9.9640

Conversions

Conversions Part 2

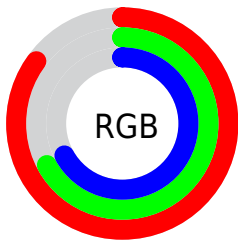
Format	Color
R _Y B	217, 170, 170
Decimal	14265002
CIE Lab	73.81, 17.19, 6.60
CIE LCh	74, 18.411, 21.002
Yxy	46.4056, 0.3564, 0.3291
Android (android.graphics.Color)	4292455082 (0xFFD9AAAA)
YUV	184.0530, -6.9281, 28.8945
Hunter-Lab	68.1201, 12.4523, 9.0927

Details

The HunterLab color **68.1201, 12.4523, 9.0927** is a light color, and the websafe version is hex **CC9999**. A complement of this color would be **79.4857, -18.0256, -0.3035**, and the grayscale version is **69.2764, -3.6964, 3.7639**.

A 20% lighter version of the original color is **89.7478, 5.5461, 8.3399**, and **46.7354, 11.5831, 7.2571** is the 20% darker color. If you saturate the color by 10%, you get **61.7866, 20.7877, 11.4315**, and if you desaturate by 10%, it is **74.9090, 4.4515, 6.9025**.

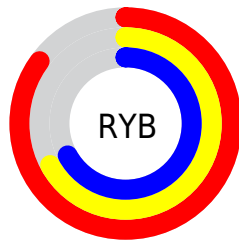
Distribution



Red (85%)

Green (67%)

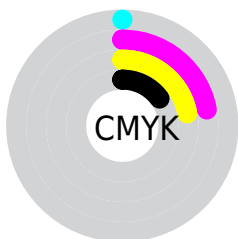
Blue (67%)



Red (85%)

Yellow (67%)

Blue (67%)

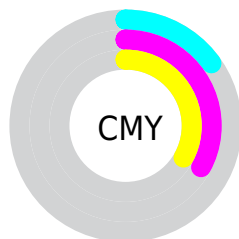


Cyan (0%)

Magenta (22%)

Yellow (22%)

Black (15%)



Cyan (15%)

Magenta (33%)

Yellow (33%)

Brightness & Saturation Gradients

These gradients show how the HunterLab color 68.1201, 12.4523, 9.0927 changes by changing the brightness by 10 percent. The first figure shows a shift by +10% for each color and the second figure -10%.

Similar to the brightness gradients but the following saturation gradients show a change of the HunterLab color 68.1201, 12.4523, 9.0927 by changing the saturation by 10% instead.

68.1201, 12.4523,
9.0927

68.1201, 12.4523,
9.0927

192.9863, 11.9620,
18.2916

57.0666, 12.2015,
8.1560

92.1009, 12.7292,
11.0157

46.6843, 11.8693,
7.2310

104.9643, 12.7731,
12.0017

37.0213, 11.4418,
6.3157

118.3764, 12.7599,
13.0052

28.1359, 10.9043,
5.4048

132.3155, 12.6938,
14.0265

20.1033, 10.2366,
4.4889

146.7626, 12.5781,
15.0658

13.0260, 9.4127,
3.5499

161.7002, 12.4159,

6.4928, 11.1882,

16.1231

4.5450

177.1128, 12.2098,
17.1984

0.0000, NaN, NaN

0.0000, NaN, NaN

■ 68.1201, 12.4523,
9.0927

■ 68.1201, 12.4523,
9.0927

■ 61.7866, 20.7877,
11.4315

■ 74.9090, 4.4515,
6.9025

■ 55.9926, 29.3999,
13.8999

■ 82.0775, -3.2059,
4.8529

■ 50.8475, 38.1061,
16.4465

■ 89.5710, -10.5504,
2.9316

■ 46.4742, 46.5472,
18.9597

■ 96.6912, -17.0453,
1.2698

■ 42.9963, 54.1495,

21.2561

■ 40.5079, 60.1958,
23.1022

■ 39.0285, 64.0762,
24.2950

■ 38.4086, 65.7731,
24.8187

Harmonies

Analogous

The Analogous color harmony consists of three colors that are next to each other on the color wheel.



68.1217, 13.4258, 1.2086



68.1201, 12.4523, 9.0927



68.1217, 7.0524, 14.8073

Triad

The Triadic color harmony groups three colors that are evenly spaced from another and form a triangle on the color wheel.



68.1217, 12.4499, 9.0938



68.1217, -15.9861, 12.8594



68.1217, -6.1985, -13.6762

Complementary

The Complementary color scheme is a pair of colors which are on the opposite of each other on the color wheel.



68.1201, 12.4523, 9.0927



79.4857, -18.0256, -0.3035

Split Complementary

Split-complementary colors differ from the complementary color scheme. The scheme consists of three colors, the original color and two neighbors of the complement color.



68.1217, -13.7082, -9.6442



68.1201, 12.4523, 9.0927



68.1217, -19.1725, 6.1162

Square

The Square scheme is like the rectangle color scheme, but the four colors are evenly spaced on the color wheel.



68.1217, 12.4499, 9.0938



68.1217, -9.4482, 16.7872



68.1217, -18.3597, -2.1569



68.1217, 2.3728, -12.6222

Rectangle

The Rectangle color scheme consists of four colors that form a rectangle on the color wheel.



68.1201, 12.4523, 9.0927



68.1217, 1.8133, 16.9352



68.1217, -18.3597, -2.1569



68.1217, -8.9240, -12.8540

Sweetspot

The Sweet Spot groups the original color and five complimentary colors.



68.1217, 12.4499, 9.0938



94.6984, 0.1439, 6.8875



69.6502, 20.3859, -12.6063



43.5490, 0.3465, 3.2614

0.0000, NaN, NaN



46.2646, -2.4686, 2.5136

Same Dimension

The Same Dimension uses a secret algorithm to generate beautiful new colors.



68.1217, 12.4499, 9.0938



78.2239, 19.4809, 12.1806



74.8438, 0.3210, 15.9966



36.1272, 1.2865, 3.0405



29.8835, 51.1736, 19.3100



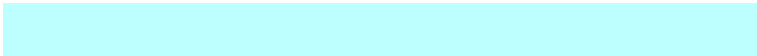
7.6066, 13.0237, 4.9152

Inverse Universe

The Inverse Universe completely reimagines the original color for something new.



79.4857, -18.0256, -0.3035



94.6133, -24.6045, -1.4169



72.0540, -6.4821, -9.7313



38.5090, -5.0701, 1.0812



57.5045, -30.4828, -6.0720



14.6368, -7.7590, -1.5452

Previews

White Background



This preview shows how the HunterLab color 68.1201, 12.4523, 9.0927 looks on a white background.

Color Contrast Check

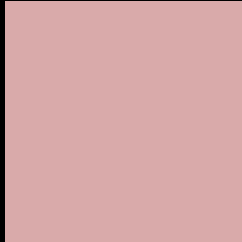
Large Text (above 18pt) WCAG AA × Fail

Any Text WCAG AA × Fail

Large Text (above 18pt) WCAG AAA × Fail

Any Text WCAG AAA × Fail

Black Background



This preview shows how the HunterLab color 68.1201, 12.4523, 9.0927 looks on a black background.

Color Contrast Check

Large Text (above 18pt) WCAG AA ✓ Pass

Any Text WCAG AA ✓ Pass

Large Text (above 18pt) WCAG AAA ✓ Pass

Any Text WCAG AAA ✓ Pass

If you want to check with other color combinations, try the [Color Contrast Checker](#).

HunterLab 68.1201, 12.4523, 9.0927 Background



This preview shows how black text looks on a background with the HunterLab color 68.1201, 12.4523, 9.0927.



This preview shows how white text looks on a background with the HunterLab color 68.1201, 12.4523, 9.0927.

Color Blindness Simulation

Color vision deficiency is a very complex topic, and I could not describe the different causes any better than Wikipedia does, so if you want to learn more, you should check out their [article about color blindness](#).

Dichromacy



Original Color

68.1201, 12.4523, 9.0927

Protanopia

68.2799, -2.8685, 6.3572

Deuteranopia

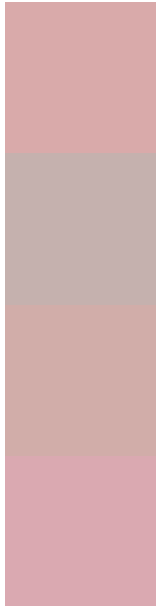
68.0896, 5.0869, 9.3604



Tritanopia

68.0051, 15.5296, 4.0626

Trichromacy



Original Color

68.1201, 12.4523, 9.0927

Protanomaly

68.0960, 2.4292, 7.1370

Deuteranomaly

68.0493, 7.8705, 9.3649

Tritanomaly

68.1584, 14.3841, 6.0679

Monochromacy



Original Color

68.1201, 12.4523, 9.0927

Achromatopsia

69.2330, -3.6941, 3.7616

Achromatomaly

68.7245, 1.8628, 5.5872

CSS Examples

Text

The CSS property to change the color of the text to HunterLab 68.1201, 12.4523, 9.0927 is called "color". The color property can be set on classes, ids or directly on the HTML element.

This example shows how text in the color `rgb(217, 170, 170)` looks like.

```
.text, #text, p{  
    color:rgb(217, 170, 170)  
}
```

If you want to add a text shadow in that color use the text-shadow property, you can generate a text shadow directly with our [CSS Text Shadow Generator](#).

Here you see how black text with a 4 pixel rgb(217, 170, 170) colored shadow looks like.

```
.shadow{ text-shadow: 4px 4px 2px rgb(217, 170, 170) }
```

Border

The CSS property to change the border of an element to HunterLab 68.1201, 12.4523, 9.0927 is called "border". The border property can be set on classes, ids or directly on the HTML element.

This example shows the color as border, it can be applied via the CSS property "border" or "border-color".

```
.border, #border, table{ border:4px solid rgb(217, 170, 170) }
```


If only the border color should be changed use the property `border-color`.

```
.border{ border-color:rgb(217, 170, 170) }
```

If you want to add a box shadow in that color use:

Here you see how a box with a 4 pixel `rgb(217, 170, 170)` colored shadow looks like.

```
.boxshadow{ -moz-box-shadow:4px 4px 4px  
4px rgb(217, 170, 170); -webkit-box-  
shadow:4px 4px 4px 4px rgb(217, 170, 170);  
box-shadow:4px 4px 4px 4px rgb(217, 170,  
170) }
```

Background

The CSS property to change the background color of an element to HunterLab 68.1201, 12.4523, 9.0927 is called "background". The background property can be set on classes, ids or directly on the HTML element.

```
.background, #background, body{  
background: rgb(217, 170, 170) }
```

If only the background color should be changed can be used:

```
.background{ background-color: rgb(217,  
170, 170) }
```

This example shows the color as background, it is applied via the CSS property "background".

To optimize and compress your CSS code, you can use our [online CSS compressor and optimizer](#) based on csstidy. If you want to create a linear or radial gradient as background or border, check our [CSS Gradient Generator](#).

Hey! You found this booklet interesting? Support Converting Colors with the new Membership Option!

The pro membership hides all ads, plus gives you double the colors in the color bucket, and more awesome pro features!

[Learn more, Memberships starting at \\$2.50/m!](#)

**Follow me
on Twitter!**

@ConvertingColor