

Converting Colors

HunterLab(67.9739, 0.7864,
6.7633)

Have a look what the booklet for
HunterLab(67.9739, 0.7864, 6.7633)
contains.

HunterLab(67.9958, 0.5907, 6.9917)	3
<i>Conversions</i>	4
<i>Details</i>	6
<i>Harmonies</i>	12
<i>Previews</i>	24
<i>Color Blindness Simulation</i>	28
<i>CSS Examples</i>	31

Color

**HunterLab(67.9958, 0.5907,
6.9917)**

Conversions

Conversions Part 1

Format	Color
Hex	C1B2AE
RGB	193, 178, 174
RGB Percent	76%, 70%, 68%
CMY	0.2431, 0.3019, 0.3176
CMYK	0.00, 0.08, 0.10, 0.24
HSL	13°, 13%, 72%
HSV	13°, 10%, 76%
XYZ	45.5527, 46.2343, 46.5676
YIQ	182.0290, 10.2240, 1.9360

Conversions

Conversions Part 2

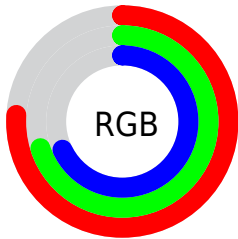
Format	Color
R_{YB}	193, 179, 174
Decimal	12694190
CIE Lab	73.70, 4.66, 3.97
CIE LCh	74, 6.118, 40.410
Yxy	46.2363, 0.3292, 0.3342
Android (android.graphics.Color)	4290884270 (0xFFC1B2AE)
YUV	182.0290, -3.9583, 9.6216
Hunter-Lab	67.9958, 0.5907, 6.9917

Details

The HunterLab color $67.9958, 0.5907, 6.9917$ is a light color, and the websafe version is hex `CCCCCC`. A complement of this color would be $70.1735, -7.6286, 0.4793$, and the grayscale version is $68.4212, -3.6508, 3.7175$.

A 20% lighter version of the original color is $92.1015, -0.3362, 9.0265$, and $46.4342, 1.3661, 5.1264$ is the 20% darker color. If you saturate the color by 10%, you get $63.0931, 5.4141, 9.9548$, and if you desaturate by 10%, it is $73.1072, -3.9654, 3.9191$.

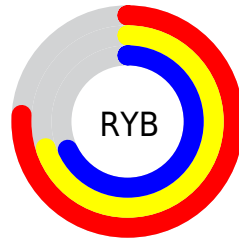
Distribution



Red (76%)

Green (70%)

Blue (68%)



Red (76%)

Yellow (70%)

Blue (68%)

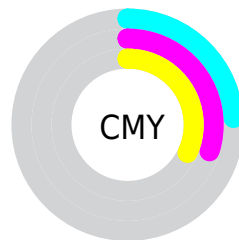


Cyan (0%)

Magenta (8%)

Yellow (10%)

Black (24%)



Cyan (24%)

Magenta (30%)

Yellow (32%)

Brightness & Saturation Gradients

These gradients show how the HunterLab color 67.9958, 0.5907, 6.9917 changes by changing the brightness by 10 percent. The first figure shows a shift by +10% for each color and the second figure -10%.

Similar to the brightness gradients but the following saturation gradients show a change of the HunterLab color 67.9958, 0.5907, 6.9917 by changing the saturation by 10% instead.

■ 67.9958, 0.5907,
6.9917

■ 67.9958, 0.5907,
6.9917

192.8103, -4.3602,
15.2146

■ 56.9494, 0.9427,
6.1925

■ 91.9633, -0.2546,
8.6630

■ 46.5746, 1.2457,
5.4151

104.8206, -0.7376,
9.5327

■ 36.9198, 1.4921,
4.6601

118.2268, -1.2582,
10.4250

■ 28.0433, 1.6743,
3.9259

132.1604, -1.8142,
11.3397

■ 20.0206, 1.7812,
3.2089

146.6019, -2.4039,
12.2763

■ 12.9544, 1.7960,
2.5019

161.5343, -3.0257,

■ 6.3989, 2.8307,

13.2346

2.9176

176.9418, -3.6781,
14.2142

0.0000, NaN, NaN

0.0000, NaN, NaN

■ 67.9958, 0.5907,
6.9917

■ 67.9958, 0.5907,
6.9917

■ 63.0931, 5.4141,
9.9548

■ 73.1072, -3.9654,
3.9191

■ 58.4238, 10.5332,
12.7728

■ 78.3986, -8.2763,
0.7569

■ 54.0243, 15.9572,
15.4016

■ 83.8516, -12.3720,
-2.4773

■ 49.9361, 21.6738,
17.7799

■ 89.4495, -16.2794,
-5.7718

■ 46.2077, 27.6303,

■ 94.6309, -23.1170,

19.8282

-1.3691

■ 42.8925, 33.7118,
21.4500

■ 94.9092, -23.5258,
-1.0309

■ 40.0466, 39.7202,
22.5429

■ 37.7206, 45.3660,
23.0263

■ 35.9410, 50.2588,
23.0123

Harmonies

Analogous

The Analogous color harmony consists of three colors that are next to each other on the color wheel.



67.9973, 1.8391, 4.6360



67.9958, 0.5907, 6.9917



67.9973, -1.7858, 8.4290

Triad

The Triadic color harmony groups three colors that are evenly spaced from another and form a triangle on the color wheel.



67.9973, 0.5888, 6.9928



67.9973, -8.7151, 5.4250



67.9973, -2.6393, -1.6249

Complementary

The Complementary color scheme is a pair of colors which are on the opposite of each other on the color wheel.



67.9958, 0.5907, 6.9917



70.1735, -7.6286, 0.4793

Split Complementary

Split-complementary colors differ from the complementary color scheme. The scheme consists of three colors, the original color and two neighbors of the complement color.



67.9973, -5.4584, -1.3923



67.9958, 0.5907, 6.9917



67.9973, -8.9351, 2.7531

Square

The Square scheme is like the rectangle color scheme, but the four colors are evenly spaced on the color wheel.



67.9973, 0.5888, 6.9928



67.9973, -7.1459, 7.5500



67.9973, -7.7519, 0.2365



67.9973, -0.0449, -0.3864

Rectangle

The Rectangle color scheme consists of four colors that form a rectangle on the color wheel.



67.9958, 0.5907, 6.9917



67.9973, -3.6710, 8.7077



67.9973, -7.7519, 0.2365



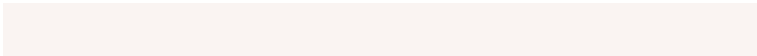
67.9973, -3.5926, -1.7174

Sweetspot

The Sweet Spot groups the original color and five complimentary colors.



67.9973, 0.5888, 6.9928



95.6198, -3.3922, 6.5764



67.3001, 5.1218, -0.9552



44.0308, -1.3442, 3.2012



98.8636, -5.2751, 5.3714



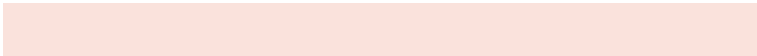
45.2661, -2.4153, 2.4594

Same Dimension

The Same Dimension uses a secret algorithm to generate beautiful new colors.



67.9973, 0.5888, 6.9928



89.4352, 2.2676, 10.3021



70.7546, -4.0708, 9.9710



32.2710, 0.1736, 3.2394



29.4556, 40.5357, 18.8600



6.9098, 6.1933, 4.3662

Inverse Universe

The Inverse Universe completely reimagines the original color for something new.



70.1735, -7.6286, 0.4793



93.0308, -11.3153, -0.4610



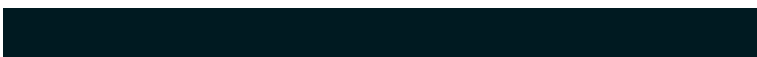
67.3581, -3.0181, -2.9566



33.2512, -3.5274, 0.3056



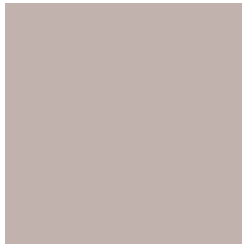
42.0568, -14.3257, -21.6424



9.2561, -3.6696, -3.6478

Previews

White Background



This preview shows how the HunterLab color 67.9958, 0.5907, 6.9917 looks on a white background.

Color Contrast Check

Large Text (above 18pt) WCAG AA × Fail

Any Text WCAG AA × Fail

Large Text (above 18pt) WCAG AAA × Fail

Any Text WCAG AAA × Fail

Black Background



This preview shows how the HunterLab color 67.9958, 0.5907, 6.9917 looks on a black background.

Color Contrast Check

Large Text (above 18pt) WCAG AA ✓ Pass

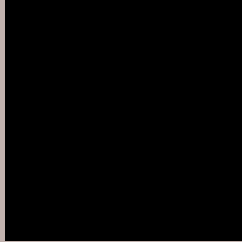
Any Text WCAG AA ✓ Pass

Large Text (above 18pt) WCAG AAA ✓ Pass

Any Text WCAG AAA ✓ Pass

If you want to check with other color combinations, try the [Color Contrast Checker](#).

HunterLab 67.9958, 0.5907, 6.9917 Background



This preview shows how black text looks on a background with the HunterLab color 67.9958, 0.5907, 6.9917.



This preview shows how white text looks on a background with the HunterLab color 67.9958, 0.5907,

6.9917.

Color Blindness Simulation

Color vision deficiency is a very complex topic, and I could not describe the different causes any better than Wikipedia does, so if you want to learn more, you should check out their [article about color blindness](#).

Dichromacy



Original Color

67.9958, 0.5907, 6.9917

Protanopia

67.9535, -2.5283, 6.4416

Deuteranopia

67.9504, 4.9596, 6.5692



Tritanopia

68.0639, 4.7148, 0.0851

Trichromacy



Original Color

67.9958, 0.5907, 6.9917

Protanomaly

67.9369, -1.0640, 6.4484

Deuteranomaly

67.9350, 3.4296, 6.5249

Tritanomaly

68.0987, 3.0327, 2.5335

Monochromacy



Original Color

67.9958, 0.5907, 6.9917

Achromatopsia

68.3947, -3.6494, 3.7160

Achromatomaly

68.3678, -2.3883, 5.1010

CSS Examples

Text

The CSS property to change the color of the text to HunterLab 67.9958, 0.5907, 6.9917 is called "color". The color property can be set on classes, ids or directly on the HTML element.

This example shows how text in the color `rgb(193, 178, 174)` looks like.

```
.text, #text, p{  
    color:rgb(193, 178, 174)  
}
```

If you want to add a text shadow in that color use the text-shadow property, you can generate a text shadow directly with our [CSS Text Shadow Generator](#).

Here you see how black text with a 4 pixel rgb(193, 178, 174) colored shadow looks like.

```
.shadow{ text-shadow: 4px 4px 2px rgb(193, 178, 174) }
```

Border

The CSS property to change the border of an element to HunterLab 67.9958, 0.5907, 6.9917 is called "border".

The border property can be set on classes, ids or directly on the HTML element.

This example shows the color as border, it can be applied via the CSS property "border" or "border-color".

```
.border, #border, table{ border:4px solid rgb(193, 178, 174) }
```


If only the border color should be changed use the property `border-color`.

```
.border{ border-color:rgb(193, 178, 174) }
```

If you want to add a box shadow in that color use:

Here you see how a box with a 4 pixel `rgb(193, 178, 174)` colored shadow looks like.

```
.boxshadow{ -moz-box-shadow:4px 4px 4px  
4px rgb(193, 178, 174); -webkit-box-  
shadow:4px 4px 4px 4px rgb(193, 178, 174);  
box-shadow:4px 4px 4px 4px rgb(193, 178,  
174) }
```

Background

The CSS property to change the background color of an element to HunterLab 67.9958, 0.5907, 6.9917 is called "background". The background property can be set on classes, ids or directly on the HTML element.

```
.background, #background, body{  
background: rgb(193, 178, 174) }
```

If only the background color should be changed can be used:

```
.background{ background-color: rgb(193,  
178, 174) }
```

This example shows the color as background, it is applied via the CSS property "background".

To optimize and compress your CSS code, you can use our [online CSS compressor and optimizer](#) based on csstidy. If you want to create a linear or radial gradient as background or border, check our [CSS Gradient Generator](#).

Hey! You found this booklet interesting? Support Converting Colors with the new Membership Option!

The pro membership hides all ads, plus gives you double the colors in the color bucket, and more awesome pro features!

[Learn more, Memberships starting at \\$2.50/m!](#)

**Follow me
on Twitter!**

@ConvertingColor