

# Converting Colors

HunterLab(68.0235, 8.6390,  
13.8718)

Have a look what the booklet for  
HunterLab(68.0235, 8.6390,  
13.8718) contains.

<b>HunterLab(68.0219, 8.6415, 13.8708)</b> .....	3
<i><b>Conversions</b></i> .....	4
<i><b>Details</b></i> .....	6
<i><b>Harmonies</b></i> .....	12
<i><b>Previews</b></i> .....	24
<i><b>Color Blindness Simulation</b></i> .....	28
<i><b>CSS Examples</b></i> .....	31

# Color

**HunterLab(68.0219, 8.6415,  
13.8708)**

# Conversions

## Conversions Part 1

Format	Color
Hex	D6AC9E
RGB	214, 172, 158
RGB Percent	84%, 67%, 62%
CMY	0.1608, 0.3255, 0.3804
CMYK	0.00, 0.20, 0.26, 0.16
HSL	15°, 41%, 73%
HSV	15°, 26%, 84%
XYZ	48.6556, 46.2698, 38.7142
YIQ	182.9620, 29.5260, 4.5500

# Conversions

## Conversions Part 2

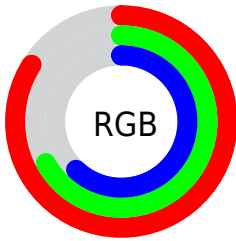
Format	Color
<a href="#">RYB</a>	<a href="#">214, 177, 158</a>
Decimal	<a href="#">14068894</a>
CIELab	<a href="#">73.72, 13.25, 13.00</a>
CIELCh	<a href="#">74, 18.564, 44.463</a>
Yxy	<a href="#">46.2719, 0.3641, 0.3462</a>
Android (android.graphics.Color)	<a href="#">4292258974 (0xFFD6AC9E)</a>
YUV	<a href="#">182.9620, -12.3063, 27.2203</a>
Hunter-Lab	<a href="#">68.0219, 8.6415, 13.8708</a>

# Details

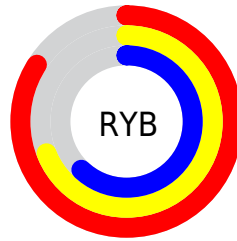
The HunterLab color **68.0219, 8.6415, 13.8708** is a light color, and the websafe version is hex **CC9999**. A complement of this color would be **73.0965, -13.4103, -6.7952**, and the grayscale version is **68.8402, -3.6731, 3.7402**.

A 20% lighter version of the original color is **90.0013, 2.5889, 14.0337**, and **46.6515, 8.1653, 11.2110** is the 20% darker color. If you saturate the color by 10%, you get **63.1295, 14.2160, 17.0621**, and if you desaturate by 10%, it is **73.1823, 3.4081, 10.4297**.

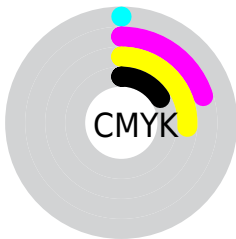
# Distribution



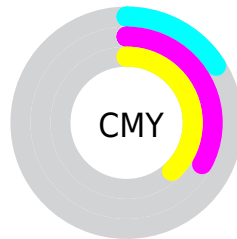
- Red (84%)
- Green (67%)
- Blue (62%)



- Red (84%)
- Yellow (69%)
- Blue (62%)



- Cyan (0%)
- Magenta (20%)
- Yellow (26%)
- Black (16%)




- Cyan (16%)
- Magenta (33%)
- Yellow (38%)


# Brightness & Saturation Gradients

These gradients show how the HunterLab color 68.0219, 8.6415, 13.8708 changes by changing the brightness by 10 percent. The first figure shows a shift by +10% for each color and the second figure -10%.


Similar to the brightness gradients but the following saturation gradients show a change of the HunterLab color 68.0219, 8.6415, 13.8708 by changing the saturation by 10% instead.




 68.0219, 8.6415,  
13.8708


 68.0219, 8.6415,  
13.8708


192.8473, 6.7759,  
25.5217

 56.9741, 8.5743,  
12.5834


 91.9923, 8.5743,  
16.4311

 46.5977, 8.4349,  
11.2805


 104.8509, 8.4561,  
17.7104

 36.9412, 8.2107,  
9.9527


118.2583, 8.2866,  
18.9935

 28.0628, 7.8881,  
8.5841

132.1930, 8.0692,  
20.2824

 20.0380, 7.4484,  
7.1485

146.6357, 7.8071,  
21.5785

 12.9695, 6.8645,  
5.6732

161.5692, 7.5027,

 6.4188, 8.6515,

22.8832

4.4931

176.9778, 7.1583,  
24.1974

0.0000, NaN, NaN

0.0000, NaN, NaN

■ 68.0219, 8.6415,  
13.8708

■ 68.0219, 8.6415,  
13.8708

■ 63.1295, 14.2160,  
17.0621

■ 73.1823, 3.4081,  
10.4297

■ 58.5390, 20.1443,  
19.9348

■ 78.5736, -1.4984,  
6.7861

■ 54.2965, 26.3995,  
22.4068

■ 84.1702, -6.1098,  
2.9791

■ 50.4528, 32.9084,  
24.3792

■ 89.9495, -10.4573,  
-0.9628

■ 47.0623, 39.5274,

■ 95.5470, -16.5009,

25.7457

-0.1204

■ 44.1787, 46.0237,  
26.4156

■ 96.4553, -17.8959,  
0.9676

■ 41.8462, 52.0717,  
26.3634

■ 41.0971, 54.1611,  
26.2720

# Harmonies

## Analogous

The Analogous color harmony consists of three colors that are next to each other on the color wheel.



68.0235, 13.2191, 7.5342



68.0219, 8.6415, 13.8708



68.0235, 0.8758, 17.2414

# Triad

The Triadic color harmony groups three colors that are evenly spaced from another and form a triangle on the color wheel.



68.0235, 8.6390, 13.8718



68.0235, -18.9163, 7.8027



68.0235, 0.5677, -13.4537

# Complementary

The Complementary color scheme is a pair of colors which are on the opposite of each other on the color wheel.



68.0219, 8.6415, 13.8708



73.0965, -13.4103, -6.7952

# Split Complementary

Split-complementary colors differ from the complementary color scheme. The scheme consists of three colors, the original color and two neighbors of the complement color.



68.0235, -8.0278, -13.3582



68.0219, 8.6415, 13.8708



68.0235, -18.9895, -0.3655

# Square

The Square scheme is like the rectangle color scheme, but the four colors are evenly spaced on the color wheel.



68.0235, 8.6390, 13.8718



68.0235, -14.8873, 14.0472



68.0235, -15.0927, -8.3282



68.0235, 8.4038, -8.5746



# Rectangle

The Rectangle color scheme consists of four colors that form a rectangle on the color wheel.



68.0219, 8.6415, 13.8708



68.0235, -4.9218, 17.6538



68.0235, -15.0927, -8.3282



68.0235, -2.3350, -14.0199

# Sweetspot

The Sweet Spot groups the original color and five complimentary colors.



68.0235, 8.6390, 13.8718



94.5408, -0.7121, 9.1417



65.5137, 22.6285, -8.6874



43.2723, 0.0849, 4.5454

0.0000, NaN, NaN



46.2646, -2.4686, 2.5136



# Same Dimension

The Same Dimension uses a secret algorithm to generate beautiful new colors.



68.0235, 8.6390, 13.8718



79.8409, 13.9783, 18.9597



76.2061, -5.5683, 21.6926



35.9449, 0.0301, 3.7404



32.1698, 41.4476, 20.5485



8.7000, 7.9360, 5.4998

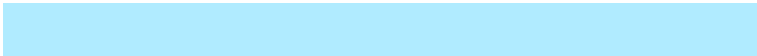


# Inverse Universe

The Inverse Universe completely reimagines the original color for something new.



73.0965, -13.4103, -6.7952



87.1743, -17.9897, -10.9443



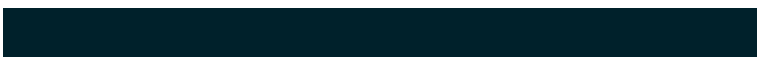
64.5211, 0.4916, -18.6944



36.8204, -3.7550, 0.1799



42.9014, -12.3684, -26.9233

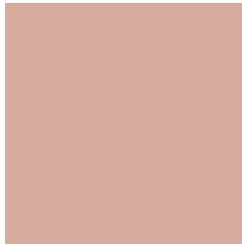


11.1250, -3.8599, -5.5730



# Previews

## White Background



This preview shows how the HunterLab color 68.0219, 8.6415, 13.8708 looks on a white background.

## Color Contrast Check

Large Text (above 18pt) WCAG AA × Fail

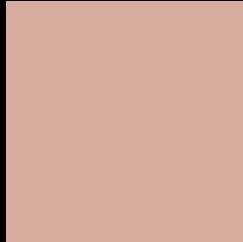
Any Text WCAG AA × Fail

Large Text (above 18pt) WCAG AAA × Fail

Any Text WCAG AAA × Fail



# Black Background



This preview shows how the HunterLab color 68.0219, 8.6415, 13.8708 looks on a black background.

## Color Contrast Check

Large Text (above 18pt) WCAG AA ✓ Pass

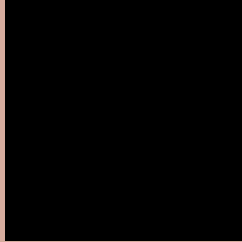
Any Text WCAG AA ✓ Pass

Large Text (above 18pt) WCAG AAA ✓ Pass

Any Text WCAG AAA ✓ Pass

If you want to check with other color combinations, try the [Color Contrast Checker](#).

## HunterLab 68.0219, 8.6415, 13.8708 Background



This preview shows how black text looks on a background with the HunterLab color 68.0219, 8.6415, 13.8708.



This preview shows how white text looks on a background with the HunterLab color 68.0219, 8.6415,

13.8708.

# Color Blindness Simulation

Color vision deficiency is a very complex topic, and I could not describe the different causes any better than Wikipedia does, so if you want to learn more, you should check out their [article about color blindness](#).

## Dichromacy



### Original Color

68.0219, 8.6415, 13.8708

### Protanopia

68.1989, -3.8683, 11.8322

### Deuteranopia

68.0879, 4.4495, 14.2568



## Tritanopia

68.1946, 14.7982, 3.8031

# Trichromacy



## Original Color

68.0219, 8.6415, 13.8708

## Protanomaly

68.1321, 0.3473, 12.6464

## Deuteranomaly

68.1235, 6.0321, 14.3209

## Tritanomaly

68.0922, 12.5307, 7.7530

# Monochromacy



## Original Color

68.0219, 8.6415, 13.8708

## Achromatopsia

68.8136, -3.6717, 3.7388

## Achromatomaly

68.3853, 0.4167, 7.4276

# CSS Examples

## Text

The CSS property to change the color of the text to HunterLab 68.0219, 8.6415, 13.8708 is called "color". The color property can be set on classes, ids or directly on the HTML element.

This example shows how text in the color `rgb(214, 172, 158)` looks like.

```
.text, #text, p{  
    color:rgb(214, 172, 158)  
}
```

If you want to add a text shadow in that color use the text-shadow property, you can generate a text shadow directly with our [CSS Text Shadow Generator](#).

Here you see how black text with a 4 pixel rgb(214, 172, 158) colored shadow looks like.

```
.shadow{ text-shadow: 4px 4px 2px rgb(214, 172, 158) }
```

## Border

The CSS property to change the border of an element to HunterLab 68.0219, 8.6415, 13.8708 is called "border". The border property can be set on classes, ids or directly on the HTML element.

This example shows the color as border, it can be applied via the CSS property "border" or "border-color".

```
.border, #border, table{ border:4px solid rgb(214, 172, 158) }
```



If only the border color should be changed use the property `border-color`.

```
.border{ border-color:rgb(214, 172, 158) }
```

If you want to add a box shadow in that color use:

Here you see how a box with a 4 pixel `rgb(214, 172, 158)` colored shadow looks like.

```
.boxshadow{ -moz-box-shadow:4px 4px 4px  
4px rgb(214, 172, 158); -webkit-box-  
shadow:4px 4px 4px 4px rgb(214, 172, 158);  
box-shadow:4px 4px 4px 4px rgb(214, 172,  
158) }
```

# Background

The CSS property to change the background color of an element to HunterLab 68.0219, 8.6415, 13.8708 is called "background". The background property can be set on classes, ids or directly on the HTML element.

```
.background, #background, body{  
background: rgb(214, 172, 158) }
```

If only the background color should be changed can be used:

```
.background{ background-color: rgb(214,  
172, 158) }
```

This example shows the color as background, it is applied via the CSS property "background".

To optimize and compress your CSS code, you can use our [online CSS compressor and optimizer](#) based on csstidy. If you want to create a linear or radial gradient as background or border, check our [CSS Gradient Generator](#).

Hey! You found this booklet interesting? Support Converting Colors with the new Membership Option!

The pro membership hides all ads, plus gives you double the colors in the color bucket, and more awesome pro features!

**[Learn more, Memberships starting at \\$2.50/m!](#)**

**Follow me  
on Twitter!**

@ConvertingColor