

Converting Colors

HunterLab(68.0837, 9.5806,
5.2105)

Have a look what the booklet for
HunterLab(68.0837, 9.5806, 5.2105)
contains.

HunterLab(68.0551, 9.9061, 4.9537)	3
<i>Conversions</i>	4
<i>Details</i>	6
<i>Harmonies</i>	12
<i>Previews</i>	24
<i>Color Blindness Simulation</i>	28
<i>CSS Examples</i>	31

Color

**HunterLab(68.0551, 9.9061,
4.9537)**

Conversions

Conversions Part 1

Format	Color
Hex	D1ACB3
RGB	209, 172, 179
RGB Percent	82%, 67%, 70%
CMY	0.1804, 0.3255, 0.2980
CMYK	0.00, 0.18, 0.14, 0.18
HSL	349°, 29%, 75%
HSV	349°, 18%, 82%
XYZ	49.1836, 46.3150, 48.9952
YIQ	183.8610, 19.8050, 10.0210

Conversions

Conversions Part 2

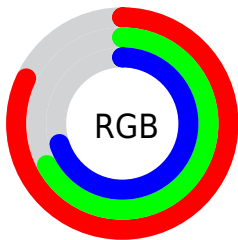
Format	Color
R _Y B	209, 172, 179
Decimal	13741235
CIE Lab	73.75, 14.57, 1.48
CIE LCh	74, 14.640, 5.810
Yxy	46.3170, 0.3404, 0.3205
Android (android.graphics.Color)	4291931315 (0xFFD1ACB3)
YUV	183.8610, -2.3965, 22.0469
Hunter-Lab	68.0551, 9.9061, 4.9537

Details

The HunterLab color **68.0551, 9.9061, 4.9537** is a light color, and the websafe version is hex **CC9999**. A complement of this color would be **76.5748, -16.3431, 3.6324**, and the grayscale version is **69.1798, -3.6913, 3.7587**.

A 20% lighter version of the original color is **90.6622, 6.1425, 4.5732**, and **46.7005, 9.2769, 3.8792** is the 20% darker color. If you saturate the color by 10%, you get **61.9136, 18.2301, 5.7123**, and if you desaturate by 10%, it is **74.5899, 1.8092, 4.5057**.

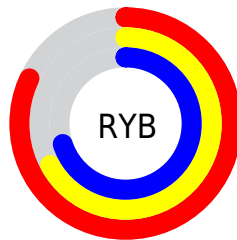
Distribution



Red (82%)

Green (67%)

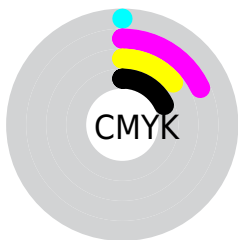
Blue (70%)



Red (82%)

Yellow (67%)

Blue (70%)

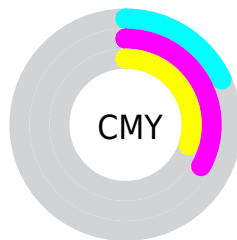


Cyan (0%)

Magenta (18%)

Yellow (14%)

Black (18%)



Cyan (18%)


Magenta (33%)


Yellow (30%)

Brightness & Saturation Gradients


These gradients show how the HunterLab color 68.0551, 9.9061, 4.9537 changes by changing the brightness by 10 percent. The first figure shows a shift by +10% for each color and the second figure -10%.


Similar to the brightness gradients but the following saturation gradients show a change of the HunterLab color 68.0551, 9.9061, 4.9537 by changing the saturation by 10% instead.

 68.0551, 9.9061,
4.9537

 68.0551, 9.9061,
4.9537


192.8942, 8.5030,
12.2778

 57.0053, 9.7773,
4.2802


 92.0290, 9.9550,
6.3945

 46.6269, 9.5727,
3.6373


104.8892, 9.8914,
7.1572

 36.9682, 9.2798,
3.0276


118.2982, 9.7744,
7.9472

 28.0875, 8.8842,
2.4526

132.2344, 9.6078,
8.7635

 20.0600, 8.3667,
1.9140

146.6786, 9.3949,
9.6055

 12.9886, 7.7001,
1.4130

161.6135, 9.1382,

 6.4439, 9.5051,

10.4723

1.3042

177.0234, 8.8402,
11.3633

0.0000, NaN, NaN

0.0000, NaN, NaN

■ 68.0551, 9.9061,
4.9537

■ 68.0551, 9.9061,
4.9537

■ 61.9136, 18.2301,
5.7123

■ 74.5899, 1.8092,
4.5057

■ 56.2342, 26.7296,
6.8304

■ 81.4548, -6.0456,
4.3151

■ 51.1082, 35.2551,
8.3552

■ 88.6046, -13.6763,
4.3403

■ 46.6410, 43.5191,
10.3072

■ 95.8008, -20.8074,
4.3123

■ 42.9451, 51.0535,

■ 96.0705, -19.2880,

12.6509

0.4733

■ 40.1214, 57.2344,
15.2627

■ 38.2247, 61.4450,
17.9196

■ 37.1984, 63.4600,
20.3250

■ 37.0208, 63.8043,
20.7817

Harmonies

Analogous

The Analogous color harmony consists of three colors that are next to each other on the color wheel.



68.0566, 8.7406, -1.6060



68.0551, 9.9061, 4.9537



68.0566, 7.3255, 10.6045

Triad

The Triadic color harmony groups three colors that are evenly spaced from another and form a triangle on the color wheel.



68.0566, 9.9039, 4.9549



68.0566, -11.1365, 13.0613



68.0566, -8.9237, -8.6808

Complementary

The Complementary color scheme is a pair of colors which are on the opposite of each other on the color wheel.



68.0551, 9.9061, 4.9537



76.5748, -16.3431, 3.6324

Split Complementary

Split-complementary colors differ from the complementary color scheme. The scheme consists of three colors, the original color and two neighbors of the complement color.



68.0566, -13.9430, -4.0033



68.0551, 9.9061, 4.9537



68.0566, -15.1849, 8.6188

Square

The Square scheme is like the rectangle color scheme, but the four colors are evenly spaced on the color wheel.



68.0566, 9.9039, 4.9549



68.0566, -4.9570, 14.9796



68.0566, -16.1918, 2.4299



68.0566, -2.3028, -9.9061

Rectangle

The Rectangle color scheme consists of four colors that form a rectangle on the color wheel.



68.0551, 9.9061, 4.9537



68.0566, 3.8892, 13.2335



68.0566, -16.1918, 2.4299



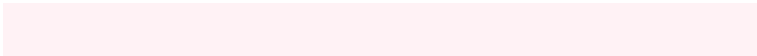
68.0566, -10.8459, -7.4390

Sweetspot

The Sweet Spot groups the original color and five complimentary colors.



68.0566, 9.9039, 4.9549



95.6478, -0.3638, 5.5505



68.2726, 12.5866, -10.0959



43.9718, 0.1578, 2.5784

0.0000, NaN, NaN



46.2646, -2.4686, 2.5136

Same Dimension

The Same Dimension uses a secret algorithm to generate beautiful new colors.



68.0566, 9.9039, 4.9549



82.4473, 16.0630, 6.4935



71.0239, 3.1205, 11.2355



34.4155, 1.4874, 2.1379



29.0880, 50.1694, 16.0420



6.9586, 12.1598, 2.6130

Inverse Universe

The Inverse Universe completely reimagines the original color for something new.



68.0566, 9.9039, 4.9549



82.4473, 16.0630, 6.4935



73.2926, -9.6688, -3.8042



34.4155, 1.4874, 2.1379



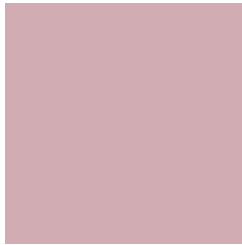
29.0880, 50.1694, 16.0420



6.9586, 12.1598, 2.6130

Previews

White Background



This preview shows how the HunterLab color 68.0551, 9.9061, 4.9537 looks on a white background.

Color Contrast Check

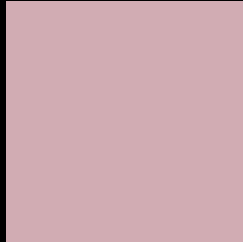
Large Text (above 18pt) WCAG AA × Fail

Any Text WCAG AA × Fail

Large Text (above 18pt) WCAG AAA × Fail

Any Text WCAG AAA × Fail

Black Background



This preview shows how the HunterLab color 68.0551, 9.9061, 4.9537 looks on a black background.

Color Contrast Check

Large Text (above 18pt) WCAG AA ✓ Pass

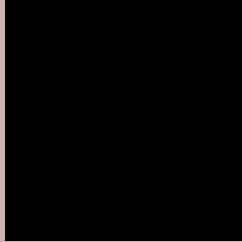
Any Text WCAG AA ✓ Pass

Large Text (above 18pt) WCAG AAA ✓ Pass

Any Text WCAG AAA ✓ Pass

If you want to check with other color combinations, try the [Color Contrast Checker](#).

HunterLab 68.0551, 9.9061, 4.9537 Background



This preview shows how black text looks on a background with the HunterLab color 68.0551, 9.9061, 4.9537.



This preview shows how white text looks on a background with the HunterLab color 68.0551, 9.9061,

4.9537.

Color Blindness Simulation

Color vision deficiency is a very complex topic, and I could not describe the different causes any better than Wikipedia does, so if you want to learn more, you should check out their [article about color blindness](#).

Dichromacy



Original Color

68.0551, 9.9061, 4.9537

Protanopia

68.0394, -1.6939, 2.3798

Deuteranopia

68.2234, 4.5758, 5.5149



Tritanopia

68.0354, 11.5766, 2.6074

Trichromacy



Original Color

68.0551, 9.9061, 4.9537

Protanomaly

67.9405, 2.3748, 3.2851

Deuteranomaly

68.2428, 6.1123, 5.5641

Tritanomaly

67.9742, 11.2547, 3.4804

Monochromacy



Original Color

68.0551, 9.9061, 4.9537

Achromatopsia

69.2330, -3.6941, 3.7616

Achromatomaly

68.8167, 0.8515, 4.2901

CSS Examples

Text

The CSS property to change the color of the text to HunterLab 68.0551, 9.9061, 4.9537 is called "color". The color property can be set on classes, ids or directly on the HTML element.

This example shows how text in the color `rgb(209, 172, 179)` looks like.

```
.text, #text, p{  
    color:rgb(209, 172, 179)  
}
```

If you want to add a text shadow in that color use the text-shadow property, you can generate a text shadow directly with our [CSS Text Shadow Generator](#).

Here you see how black text with a 4 pixel rgb(209, 172, 179) colored shadow looks like.

```
.shadow{ text-shadow: 4px 4px 2px rgb(209, 172, 179) }
```

Border

The CSS property to change the border of an element to HunterLab 68.0551, 9.9061, 4.9537 is called "border". The border property can be set on classes, ids or directly on the HTML element.

This example shows the color as border, it can be applied via the CSS property "border" or "border-color".

```
.border, #border, table{ border:4px solid rgb(209, 172, 179) }
```


If only the border color should be changed use the property `border-color`.

```
.border{ border-color:rgb(209, 172, 179) }
```

If you want to add a box shadow in that color use:

Here you see how a box with a 4 pixel `rgb(209, 172, 179)` colored shadow looks like.

```
.boxshadow{ -moz-box-shadow:4px 4px 4px  
4px rgb(209, 172, 179); -webkit-box-  
shadow:4px 4px 4px 4px rgb(209, 172, 179);  
box-shadow:4px 4px 4px 4px rgb(209, 172,  
179) }
```

Background

The CSS property to change the background color of an element to HunterLab 68.0551, 9.9061, 4.9537 is called "background". The background property can be set on classes, ids or directly on the HTML element.

```
.background, #background, body{  
background: rgb(209, 172, 179) }
```

If only the background color should be changed can be used:

```
.background{ background-color: rgb(209,  
172, 179) }
```

This example shows the color as background, it is applied via the CSS property "background".

To optimize and compress your CSS code, you can use our [online CSS compressor and optimizer](#) based on csstidy. If you want to create a linear or radial gradient as background or border, check our [CSS Gradient Generator](#).

Hey! You found this booklet interesting? Support Converting Colors with the new Membership Option!

The pro membership hides all ads, plus gives you double the colors in the color bucket, and more awesome pro features!

[Learn more, Memberships starting at \\$2.50/m!](#)

**Follow me
on Twitter!**

@ConvertingColor