

Converting Colors

HunterLab(68.1909, 1.0677,
15.0554)

Have a look what the booklet for
HunterLab(68.1909, 1.0677,
15.0554) contains.

HunterLab(68.0936, 1.4088, 14.9825)	3
<i>Conversions</i>	4
<i>Details</i>	6
<i>Harmonies</i>	12
<i>Previews</i>	24
<i>Color Blindness Simulation</i>	28
<i>CSS Examples</i>	31

Color

**HunterLab(68.0936, 1.4088,
14.9825)**

Conversions

Conversions Part 1

Format	Color
Hex	CAB19B
RGB	202, 177, 155
RGB Percent	79%, 69%, 61%
CMY	0.2078, 0.3059, 0.3922
CMYK	0.00, 0.12, 0.23, 0.21
HSL	28°, 31%, 70%
HSV	28°, 23%, 79%
XYZ	45.9956, 46.3674, 37.5359
YIQ	181.9670, 21.9620, -1.5420

Conversions

Conversions Part 2

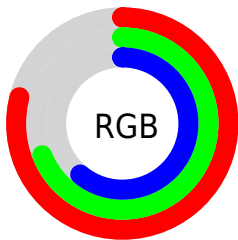
Format	Color
R_{YB}	202, 196, 155
Decimal	13283739
CIE _{Lab}	73.78, 5.55, 14.56
CIE _{LCh}	74, 15.586, 69.134
Yxy	46.3695, 0.3541, 0.3570
Android (android.graphics.Color)	4291473819 (0xFFCAB19B)
YUV	181.9670, -13.2947, 17.5689
Hunter-Lab	68.0936, 1.4088, 14.9825

Details

The HunterLab color $68.0936, 1.4088, 14.9825$ is a light color, and the websafe version is hex $CC9999$. A complement of this color would be $66.2376, -6.7769, -9.3198$, and the grayscale version is $68.4296, -3.6512, 3.7179$.

A 20% lighter version of the original color is $91.7286, -1.1752, 17.5124$, and $46.4950, 2.0924, 11.9858$ is the 20% darker color. If you saturate the color by 10%, you get $64.5508, 4.2841, 18.8646$, and if you desaturate by 10%, it is $71.7764, -1.1540, 10.6204$.

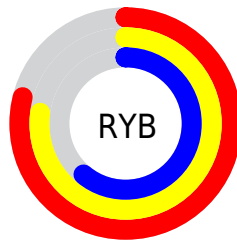
Distribution



Red (79%)

Green (69%)

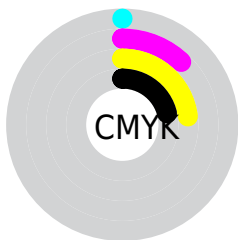
Blue (61%)



Red (79%)

Yellow (77%)

Blue (61%)

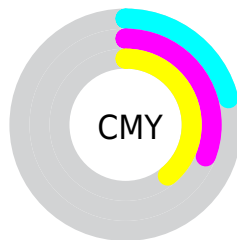


Cyan (0%)

Magenta (12%)

Yellow (23%)

Black (21%)



Cyan (21%)

Magenta (31%)

Yellow (39%)

Brightness & Saturation Gradients

These gradients show how the HunterLab color 68.0936, 1.4088, 14.9825 changes by changing the brightness by 10 percent. The first figure shows a shift by +10% for each color and the second figure -10%.

Similar to the brightness gradients but the following saturation gradients show a change of the HunterLab color 68.0936, 1.4088, 14.9825 by changing the saturation by 10% instead.

■ 68.0936, 1.4088,
14.9825

■ 68.0936, 1.4088,
14.9825

192.9487, -3.2194,
27.2482

■ 57.0416, 1.7163,
13.6065

■ 92.0715, 0.6450,
17.7032

■ 46.6609, 1.9725,
12.2079

■ 104.9336, 0.2002,
19.0563

■ 36.9996, 2.1690,
10.7755

118.3445, -0.2836,
20.4095

■ 28.1162, 2.2972,
9.2907

132.2825, -0.8042,
21.7654

■ 20.0857, 2.3452,
7.7231

146.7283, -1.3597,
23.1259

■ 13.0107, 2.2944,
6.1756

161.6648, -1.9483,

■ 6.4729, 3.3916,

24.4924

4.5310

177.0764, -2.5687,
25.8662

0.0000, NaN, NaN

0.0000, NaN, NaN

■ 68.0936, 1.4088,
14.9825

■ 68.0936, 1.4088,
14.9825

■ 64.5508, 4.2841,
18.8646

■ 71.7764, -1.1540,
10.6204

■ 61.1565, 7.4983,
22.2073

■ 75.5830, -3.4202,
5.8268

■ 57.9262, 11.0638,
24.9517

■ 79.5045, -5.4152,
0.6489

■ 54.8754, 14.9860,
27.0381

■ 83.5317, -7.1618,
-4.8731

■ 52.0202, 19.2558,

■ 87.6194, -8.8855,

28.4138

-10.1837

■ 49.3766, 23.8430,
29.0438

■ 91.0832, -14.3750,
-5.7109

■ 46.9591, 28.6866,
28.9314

■ 94.6185, -19.7877,
-1.3262

■ 45.4576, 32.0112,
28.5712

■ 95.5493, -21.1834,
-0.1996

Harmonies

Analogous

The Analogous color harmony consists of three colors that are next to each other on the color wheel.



68.0951, 7.5322, 11.5658



68.0936, 1.4088, 14.9825



68.0951, -5.8386, 15.5567

Triad

The Triadic color harmony groups three colors that are evenly spaced from another and form a triangle on the color wheel.



68.0951, 1.4066, 14.9835



68.0951, -16.8780, 1.5650



68.0951, 5.3985, -7.4186

Complementary

The Complementary color scheme is a pair of colors which are on the opposite of each other on the color wheel.



68.0936, 1.4088, 14.9825



66.2376, -6.7769, -9.3198

Split Complementary

Split-complementary colors differ from the complementary color scheme. The scheme consists of three colors, the original color and two neighbors of the complement color.



68.0951, -1.4071, -10.7500



68.0936, 1.4088, 14.9825



68.0951, -14.1297, -5.2177

Square

The Square scheme is like the rectangle color scheme, but the four colors are evenly spaced on the color wheel.



68.0951, 1.4066, 14.9835



68.0951, -16.1955, 8.2687



68.0951, -8.5380, -9.9050



68.0951, 9.9031, -1.1947

Rectangle

The Rectangle color scheme consists of four colors that form a rectangle on the color wheel.



68.0936, 1.4088, 14.9825



68.0951, -10.3004, 14.3150



68.0951, -8.5380, -9.9050



68.0951, 3.2928, -8.9420

Sweetspot

The Sweet Spot groups the original color and five complimentary colors.



68.0951, 1.4066, 14.9835



96.4340, -3.3646, 10.0324



62.6880, 16.5056, -1.9566



44.4742, -1.4741, 4.8194

0.0000, NaN, NaN



46.2646, -2.4686, 2.5136

Same Dimension

The Same Dimension uses a secret algorithm to generate beautiful new colors.



68.0951, 1.4066, 14.9835



86.2229, 3.6926, 22.1632



75.1219, -10.2122, 21.6355



34.7349, -0.9788, 4.1814



36.7043, 25.1021, 23.0565



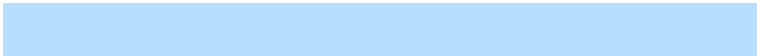
9.2003, 3.7547, 5.7349

Inverse Universe

The Inverse Universe completely reimagines the original color for something new.



66.2376, -6.7769, -9.3198



83.2927, -9.1874, -16.1806



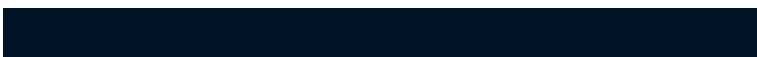
59.3305, 4.9695, -19.1931



34.3734, -2.5767, -0.5468



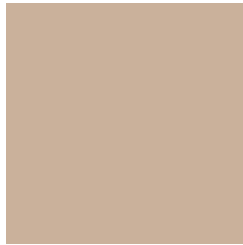
31.2221, 4.6026, -48.9607



8.0873, -0.6859, -8.6277

Previews

White Background



This preview shows how the HunterLab color 68.0936, 1.4088, 14.9825 looks on a white background.

Color Contrast Check

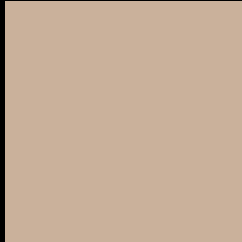
Large Text (above 18pt) WCAG AA × Fail

Any Text WCAG AA × Fail

Large Text (above 18pt) WCAG AAA × Fail

Any Text WCAG AAA × Fail

Black Background



This preview shows how the HunterLab color 68.0936, 1.4088, 14.9825 looks on a black background.

Color Contrast Check

Large Text (above 18pt) WCAG AA ✓ Pass

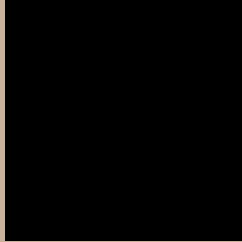
Any Text WCAG AA ✓ Pass

Large Text (above 18pt) WCAG AAA ✓ Pass

Any Text WCAG AAA ✓ Pass

If you want to check with other color combinations, try the [Color Contrast Checker](#).

HunterLab 68.0936, 1.4088, 14.9825 Background



This preview shows how black text looks on a background with the HunterLab color 68.0936, 1.4088, 14.9825.



This preview shows how white text looks on a background with the HunterLab color 68.0936, 1.4088,

Color Blindness Simulation

Color vision deficiency is a very complex topic, and I could not describe the different causes any better than Wikipedia does, so if you want to learn more, you should check out their [article about color blindness](#).

Dichromacy



Original Color

68.0936, 1.4088, 14.9825

Protanopia

68.1390, -4.3852, 14.1544

Deuteranopia

68.1443, 4.5393, 15.0886



Tritanopia

68.2306, 9.4672, 1.8419

Trichromacy



Original Color

68.0936, 1.4088, 14.9825

Protanomaly

68.1998, -2.6958, 14.6338

Deuteranomaly

68.2195, 3.3199, 15.1434

Tritanomaly

68.0782, 6.8516, 6.7475

Monochromacy



Original Color

68.0936, 1.4088, 14.9825

Achromatopsia

68.3947, -3.6494, 3.7160

Achromatomaly

68.1468, -2.0310, 7.9990

CSS Examples

Text

The CSS property to change the color of the text to HunterLab 68.0936, 1.4088, 14.9825 is called "color". The color property can be set on classes, ids or directly on the HTML element.

This example shows how text in the color `rgb(202, 177, 155)` looks like.

```
.text, #text, p{  
    color:rgb(202, 177, 155)  
}
```

If you want to add a text shadow in that color use the text-shadow property, you can generate a text shadow directly with our [CSS Text Shadow Generator](#).

Here you see how black text with a 4 pixel rgb(202, 177, 155) colored shadow looks like.

```
.shadow{ text-shadow: 4px 4px 2px rgb(202, 177, 155) }
```

Border

The CSS property to change the border of an element to HunterLab 68.0936, 1.4088, 14.9825 is called "border". The border property can be set on classes, ids or directly on the HTML element.

This example shows the color as border, it can be applied via the CSS property "border" or "border-color".

```
.border, #border, table{ border:4px solid rgb(202, 177, 155) }
```


If only the border color should be changed use the property `border-color`.

```
.border{ border-color:rgb(202, 177, 155) }
```

If you want to add a box shadow in that color use:

Here you see how a box with a 4 pixel `rgb(202, 177, 155)` colored shadow looks like.

```
.boxshadow{ -moz-box-shadow:4px 4px 4px  
4px rgb(202, 177, 155); -webkit-box-  
shadow:4px 4px 4px 4px rgb(202, 177, 155);  
box-shadow:4px 4px 4px 4px rgb(202, 177,  
155) }
```

Background

The CSS property to change the background color of an element to HunterLab 68.0936, 1.4088, 14.9825 is called "background". The background property can be set on classes, ids or directly on the HTML element.

```
.background, #background, body{  
background: rgb(202, 177, 155) }
```

If only the background color should be changed can be used:

```
.background{ background-color: rgb(202,  
177, 155) }
```

This example shows the color as background, it is applied via the CSS property "background".

To optimize and compress your CSS code, you can use our [online CSS compressor and optimizer](#) based on csstidy. If you want to create a linear or radial gradient as background or border, check our [CSS Gradient Generator](#).

Hey! You found this booklet interesting? Support Converting Colors with the new Membership Option!

The pro membership hides all ads, plus gives you double the colors in the color bucket, and more awesome pro features!

[Learn more, Memberships starting at \\$2.50/m!](#)

**Follow me
on Twitter!**

@ConvertingColor