

# Converting Colors

HunterLab(68.2103, 3.7097,  
6.1843)

Have a look what the booklet for  
HunterLab(68.2103, 3.7097, 6.1843)  
contains.

<b>HunterLab(68.0642, 3.9233, 6.2302)</b> .....	3
<b><i>Conversions</i></b> .....	4
<b><i>Details</i></b> .....	6
<b><i>Harmonies</i></b> .....	12
<b><i>Previews</i></b> .....	24
<b><i>Color Blindness Simulation</i></b> .....	28
<b><i>CSS Examples</i></b> .....	31

# Color

**HunterLab(68.0642, 3.9233,  
6.2302)**

# Conversions

## Conversions Part 1

<b>Format</b>	<b>Color</b>
Hex	C7B0B0
RGB	199, 176, 176
RGB Percent	78%, 69%, 69%
CMY	0.2196, 0.3098, 0.3098
CMYK	0.00, 0.12, 0.12, 0.22
HSL	0°, 17%, 74%
HSV	0°, 12%, 78%
XYZ	46.9150, 46.3274, 47.5436
YIQ	182.8770, 13.7080, 4.8760

# Conversions

## Conversions Part 2

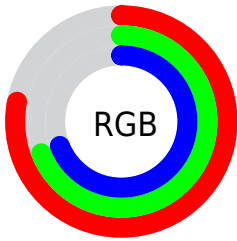
Format	Color
<a href="#">RYB</a>	<a href="#">199, 176, 176</a>
Decimal	<a href="#">13086896</a>
CIELab	<a href="#">73.76, 8.26, 3.02</a>
CIELCh	<a href="#">74, 8.798, 20.108</a>
Yxy	<a href="#">46.3294, 0.3332, 0.3291</a>
Android (android.graphics.Color)	<a href="#">4291276976</a> ( <a href="#">0xFFC7B0B0</a> )
YUV	<a href="#">182.8770, -3.3904, 14.1399</a>
Hunter-Lab	<a href="#">68.0642, 3.9233, 6.2302</a>

# Details

The HunterLab color **68.0642, 3.9233, 6.2302** is a light color, and the websafe version is hex **CCCCCC**. A complement of this color would be **73.6202, -10.9112, 1.6577**, and the grayscale version is **68.7731, -3.6696, 3.7366**.

A 20% lighter version of the original color is **92.0866, 2.9569, 7.6410**, and **46.5198, 4.5337, 4.4413** is the 20% darker color. If you saturate the color by 10%, you get **61.9347, 11.1315, 8.2064**, and if you desaturate by 10%, it is **74.5378, -2.9831, 4.3832**.

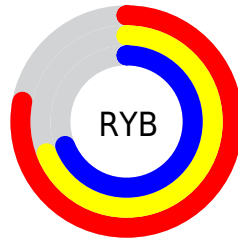
# Distribution



Red (78%)

Green (69%)

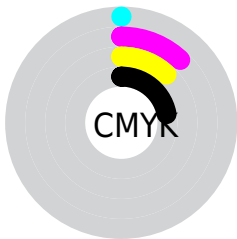
Blue (69%)



Red (78%)

Yellow (69%)

Blue (69%)

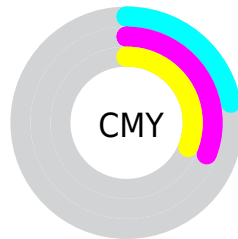


Cyan (0%)

Magenta (12%)

Yellow (12%)

Black (22%)



Cyan (22%)

Magenta (31%)


Yellow (31%)


# Brightness & Saturation Gradients

These gradients show how the HunterLab color 68.0642, 3.9233, 6.2302 changes by changing the brightness by 10 percent. The first figure shows a shift by +10% for each color and the second figure -10%.


Similar to the brightness gradients but the following saturation gradients show a change of the HunterLab color 68.0642, 3.9233, 6.2302 by changing the saturation by 10% instead.





 68.0642, 3.9233,  
6.2302

 68.0642, 3.9233,  
6.2302


192.9071, 0.2776,  
14.1109

 57.0139, 4.0972,  
5.4790

 92.0390, 3.4082,  
7.8136

 46.6349, 4.2116,  
4.7531


104.8996, 3.0797,  
8.6425

 36.9756, 4.2569,  
4.0537


118.3091, 2.7076,  
9.4958

 28.0943, 4.2223,  
3.3806

132.2457, 2.2948,  
10.3731

 20.0661, 4.0929,  
2.7324

146.6903, 1.8434,  
11.2737

 12.9938, 3.8458,  
2.1050

161.6256, 1.3557,

 6.4507, 5.2361,

12.1973

2.2947

177.0359, 0.8332,  
13.1431

0.0000, NaN, NaN

0.0000, NaN, NaN

■ 68.0642, 3.9233,  
6.2302

■ 68.0642, 3.9233,  
6.2302

■ 61.9347, 11.1315,  
8.2064

■ 74.5378, -2.9831,  
4.3832

■ 56.2079, 18.6468,  
10.3127

■ 81.3009, -9.6070,  
2.6499

■ 50.9642, 26.4112,  
12.5371

■ 88.3158, -15.9857,  
1.0170

■ 46.2993, 34.2678,  
14.8337

■ 95.3322, -21.9760,  
-0.4809

■ 42.3224, 41.9028,

17.1054

■ 39.1444, 48.8117,  
19.1909

■ 36.8512, 54.3568,  
20.8826

■ 35.4651, 57.9804,  
21.9955

■ 34.8467, 59.6710,  
22.5170

# Harmonies

## Analogous

The Analogous color harmony consists of three colors that are next to each other on the color wheel.



68.0657, 4.3004, 2.4050



68.0642, 3.9233, 6.2302



68.0657, 1.4910, 9.2076

# Triad

The Triadic color harmony groups three colors that are evenly spaced from another and form a triangle on the color wheel.



68.0657, 3.9213, 6.2313



68.0657, -9.5749, 8.3381



68.0657, -4.9836, -4.0987

# Complementary

The Complementary color scheme is a pair of colors which are on the opposite of each other on the color wheel.



68.0642, 3.9233, 6.2302



73.6202, -10.9112, 1.6577

# Split Complementary

Split-complementary colors differ from the complementary color scheme. The scheme consists of three colors, the original color and two neighbors of the complement color.



68.0657, -8.6146, -2.2992



68.0642, 3.9233, 6.2302



68.0657, -11.2236, 4.9799

# Square

The Square scheme is like the rectangle color scheme, but the four colors are evenly spaced on the color wheel.



68.0657, 3.9213, 6.2313



68.0657, -6.3227, 10.3732



68.0657, -10.8763, 1.0780



68.0657, -0.9059, -3.7146



# Rectangle

The Rectangle color scheme consists of four colors that form a rectangle on the color wheel.



68.0642, 3.9233, 6.2302



68.0657, -0.9342, 10.3819



68.0657, -10.8763, 1.0780



68.0657, -6.2952, -3.7253

# Sweetspot

The Sweet Spot groups the original color and five complimentary colors.



68.0657, 3.9213, 6.2313



97.3312, -2.6137, 6.1534



68.7873, 7.7816, -4.0505



44.7027, -0.8699, 2.9370

0.0000, NaN, NaN



46.2646, -2.4686, 2.5136



# Same Dimension

The Same Dimension uses a secret algorithm to generate beautiful new colors.



68.0657, 3.9213, 6.2313



87.8709, 7.6747, 8.9206



71.4356, -1.9067, 9.8936



32.6147, 1.1241, 2.7327



27.9432, 47.8484, 18.0561



6.0812, 10.4091, 3.9295



# Inverse Universe

The Inverse Universe completely reimagines the original color for something new.



73.6202, -10.9112, 1.6577



96.8726, -16.3828, 1.5018



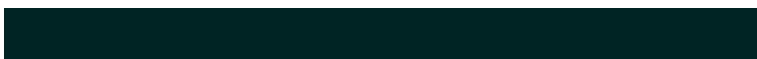
70.0767, -5.2321, -2.6268



34.7380, -4.5427, 0.9854



53.7660, -28.4985, -5.6827

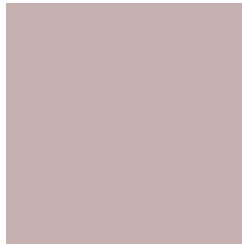


11.6999, -6.2018, -1.2360



# Previews

## White Background



This preview shows how the HunterLab color 68.0642, 3.9233, 6.2302 looks on a white background.

## Color Contrast Check

Large Text (above 18pt) WCAG AA × Fail

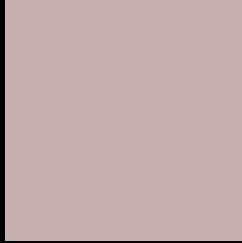
Any Text WCAG AA × Fail

Large Text (above 18pt) WCAG AAA × Fail

Any Text WCAG AAA × Fail



# Black Background



This preview shows how the HunterLab color 68.0642, 3.9233, 6.2302 looks on a black background.

## Color Contrast Check

Large Text (above 18pt) WCAG AA ✓ Pass

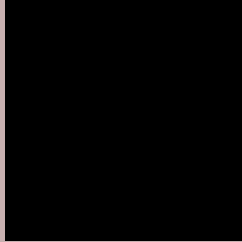
Any Text WCAG AA ✓ Pass

Large Text (above 18pt) WCAG AAA ✓ Pass

Any Text WCAG AAA ✓ Pass

If you want to check with other color combinations, try the [Color Contrast Checker](#).

## HunterLab 68.0642, 3.9233, 6.2302 Background



This preview shows how black text looks on a background with the HunterLab color 68.0642, 3.9233, 6.2302.



This preview shows how white text looks on a background with the HunterLab color 68.0642, 3.9233,



# Color Blindness Simulation

Color vision deficiency is a very complex topic, and I could not describe the different causes any better than Wikipedia does, so if you want to learn more, you should check out their [article about color blindness](#).

## Dichromacy



### Original Color

68.0642, 3.9233, 6.2302

### Protanopia

68.2764, -2.7046, 4.9897

### Deuteranopia

67.9794, 5.1148, 6.1542



## Tritanopia

68.0591, 7.5753, 0.6235

# Trichromacy



## Original Color

68.0642, 3.9233, 6.2302

## Protanomaly

68.1188, -0.2638, 5.3094

## Deuteranomaly

67.8778, 4.7740, 6.0319

## Tritanomaly

68.1175, 6.0557, 2.6090

# Monochromacy



## Original Color

68.0642, 3.9233, 6.2302

## Achromatopsia

68.8136, -3.6717, 3.7388

## Achromatomaly

68.3788, -0.7677, 4.6807

# CSS Examples

## Text

The CSS property to change the color of the text to HunterLab 68.0642, 3.9233, 6.2302 is called "color". The color property can be set on classes, ids or directly on the HTML element.

This example shows how text in the color `rgb(199, 176, 176)` looks like.

```
.text, #text, p{  
    color:rgb(199, 176, 176)  
}
```

If you want to add a text shadow in that color use the text-shadow property, you can generate a text shadow directly with our [CSS Text Shadow Generator](#).

Here you see how black text with a 4 pixel rgb(199, 176, 176) colored shadow looks like.

```
.shadow{ text-shadow: 4px 4px 2px rgb(199, 176, 176) }
```

## Border

The CSS property to change the border of an element to HunterLab 68.0642, 3.9233, 6.2302 is called "border".

The border property can be set on classes, ids or directly on the HTML element.

This example shows the color as border, it can be applied via the CSS property "border" or "border-color".

```
.border, #border, table{ border:4px solid rgb(199, 176, 176) }
```



If only the border color should be changed use the property border-color.

```
.border{ border-color:rgb(199, 176, 176) }
```

If you want to add a box shadow in that color use:

Here you see how a box with a 4 pixel rgb(199, 176, 176) colored shadow looks like.

```
.boxshadow{ -moz-box-shadow:4px 4px 4px  
4px rgb(199, 176, 176); -webkit-box-  
shadow:4px 4px 4px 4px rgb(199, 176, 176);  
box-shadow:4px 4px 4px 4px rgb(199, 176,  
176) }
```

# Background

The CSS property to change the background color of an element to HunterLab 68.0642, 3.9233, 6.2302 is called "background". The background property can be set on classes, ids or directly on the HTML element.

```
.background, #background, body{  
background: rgb(199, 176, 176) }
```

If only the background color should be changed can be used:

```
.background{ background-color: rgb(199,  
176, 176) }
```

This example shows the color as background, it is applied via the CSS property "background".

To optimize and compress your CSS code, you can use our [online CSS compressor and optimizer](#) based on csstidy. If you want to create a linear or radial gradient as background or border, check our [CSS Gradient Generator](#).

Hey! You found this booklet interesting? Support Converting Colors with the new Membership Option!

The pro membership hides all ads, plus gives you double the colors in the color bucket, and more awesome pro features!

**[Learn more, Memberships starting at \\$2.50/m!](#)**

**Follow me  
on Twitter!**

@ConvertingColor