

Converting Colors

HunterLab(68.2463, 4.9053,
5.3906)

Have a look what the booklet for
HunterLab(68.2463, 4.9053, 5.3906)
contains.

HunterLab(68.3246, 4.9153, 5.6374)	3
<i>Conversions</i>	4
<i>Details</i>	6
<i>Harmonies</i>	12
<i>Previews</i>	24
<i>Color Blindness Simulation</i>	28
<i>CSS Examples</i>	31

Color

**HunterLab(68.3246, 4.9153,
5.6374)**

Conversions

Conversions Part 1

Format	Color
Hex	C9B0B2
RGB	201, 176, 178
RGB Percent	79%, 69%, 70%
CMY	0.2118, 0.3098, 0.3020
CMYK	0.00, 0.12, 0.11, 0.21
HSL	355°, 19%, 74%
HSV	355°, 12%, 79%
XYZ	47.6486, 46.6825, 48.6187
YIQ	183.7030, 14.2580, 5.9220

Conversions

Conversions Part 2

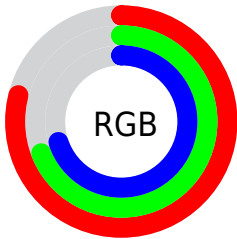
Format	Color
R _Y B	201, 176, 178
Decimal	13217970
CIE Lab	73.99, 9.32, 2.28
CIE LCh	74, 9.600, 13.763
Yxy	46.6846, 0.3333, 0.3266
Android (android.graphics.Color)	4291408050 (0xFFC9B0B2)
YUV	183.7030, -2.8116, 15.1695
Hunter-Lab	68.3246, 4.9153, 5.6374

Details

The HunterLab color $68.3246, 4.9153, 5.6374$ is a light color, and the websafe version is hex $CCCCCC$. A complement of this color would be $74.2483, -11.8892, 2.3939$, and the grayscale version is $69.1169, -3.6879, 3.7552$.

A 20% lighter version of the original color is $92.1487, 3.2914, 6.7544$, and $46.7436, 5.3311, 4.2868$ is the 20% darker color. If you saturate the color by 10%, you get $62.1960, 12.4477, 7.0544$, and if you desaturate by 10%, it is $74.8017, -2.3487, 4.4217$.

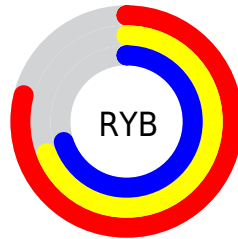
Distribution



Red (79%)

Green (69%)

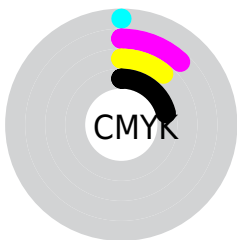
Blue (70%)



Red (79%)

Yellow (69%)

Blue (70%)

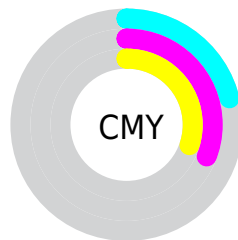


Cyan (0%)

Magenta (12%)

Yellow (11%)

Black (21%)



Cyan (21%)

Magenta (31%)

Yellow (30%)

Brightness & Saturation Gradients

These gradients show how the HunterLab color 68.3246, 4.9153, 5.6374 changes by changing the brightness by 10 percent. The first figure shows a shift by +10% for each color and the second figure -10%.

Similar to the brightness gradients but the following saturation gradients show a change of the HunterLab color 68.3246, 4.9153, 5.6374 by changing the saturation by 10% instead.

■ 68.3246, 4.9153,
5.6374

■ 68.3246, 4.9153,
5.6374

193.2755, 1.6430,
13.2551

■ 57.2594, 5.0387,
4.9230

■ 92.3269, 4.4942,
7.1533

■ 46.8645, 5.0999,
4.2365

105.2004, 4.2098,
7.9509

■ 37.1882, 5.0886,
3.5798

118.6221, 3.8802,
8.7743

■ 28.2882, 4.9935,
2.9535

132.5706, 3.5083,
9.6228

■ 20.2395, 4.7988,
2.3576

147.0266, 3.0967,
10.4957

■ 13.1439, 4.4805,
1.7910

161.9729, 2.6474,

■ 6.6442, 5.7604,

11.3924

1.7865

177.3939, 2.1623,
12.3124

0.0000, NaN, NaN

0.0000, NaN, NaN

■ 68.3246, 4.9153,
5.6374

■ 68.3246, 4.9153,
5.6374

■ 62.1960, 12.4477,
7.0544

■ 74.8017, -2.3487,
4.4217

■ 56.4751, 20.2406,
8.6940

■ 81.5722, -9.3547,
3.3767

■ 51.2429, 28.2172,
10.5711

■ 88.5976, -16.1335,
2.4777

■ 46.5954, 36.1967,
12.6732

■ 95.3754, -22.0204,
1.1435

■ 42.6413, 43.8390,

■ 95.4765, -21.4488,

14.9397

-0.2938

■ 39.4895, 50.6205,
17.2390

■ 37.2230, 55.9072,
19.3681

■ 35.8595, 59.1824,
21.0969

■ 35.2919, 60.5450,
21.9796

Harmonies

Analogous

The Analogous color harmony consists of three colors that are next to each other on the color wheel.



68.3261, 4.8124, 1.3899



68.3246, 4.9153, 5.6374



68.3261, 2.6786, 9.1435

Triad

The Triadic color harmony groups three colors that are evenly spaced from another and form a triangle on the color wheel.



68.3261, 4.9133, 5.6385



68.3261, -9.5014, 9.3722



68.3261, -6.0395, -4.6183

Complementary

The Complementary color scheme is a pair of colors which are on the opposite of each other on the color wheel.



68.3246, 4.9153, 5.6374



74.2483, -11.8892, 2.3939

Split Complementary

Split-complementary colors differ from the complementary color scheme. The scheme consists of three colors, the original color and two neighbors of the complement color.



68.3261, -9.7551, -2.1899



68.3246, 4.9153, 5.6374



68.3261, -11.7184, 5.9692

Square

The Square scheme is like the rectangle color scheme, but the four colors are evenly spaced on the color wheel.



68.3261, 4.9133, 5.6385



68.3261, -5.6850, 11.2035



68.3261, -11.8101, 1.7425



68.3261, -1.5896, -4.7211

Rectangle

The Rectangle color scheme consists of four colors that form a rectangle on the color wheel.



68.3246, 4.9153, 5.6374



68.3261, 0.1976, 10.6633



68.3261, -11.8101, 1.7425



68.3261, -7.4130, -4.0402

Sweetspot

The Sweet Spot groups the original color and five complimentary colors.



68.3261, 4.9133, 5.6385



96.4749, -1.5573, 6.0274



68.8480, 8.1132, -5.0215



44.3303, -0.3889, 2.8422

0.0000, NaN, NaN



46.2646, -2.4686, 2.5136

Same Dimension

The Same Dimension uses a secret algorithm to generate beautiful new colors.



68.3261, 4.9133, 5.6385



87.1286, 9.1280, 7.8642



71.3074, -0.6967, 9.7729



32.6350, 1.2364, 2.4364



27.9943, 48.0452, 17.2822



6.1314, 10.6021, 3.1720

Inverse Universe

The Inverse Universe completely reimagines the original color for something new.



68.3261, 4.9133, 5.6385



87.1286, 9.1280, 7.8642



71.0837, -6.4016, -2.4013



32.6350, 1.2364, 2.4364



27.9943, 48.0452, 17.2822



6.1314, 10.6021, 3.1720

Previews

White Background



This preview shows how the HunterLab color 68.3246, 4.9153, 5.6374 looks on a white background.

Color Contrast Check

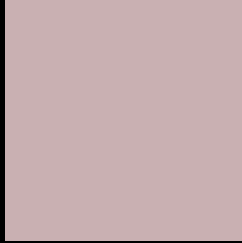
Large Text (above 18pt) WCAG AA × Fail

Any Text WCAG AA × Fail

Large Text (above 18pt) WCAG AAA × Fail

Any Text WCAG AAA × Fail

Black Background



This preview shows how the HunterLab color 68.3246, 4.9153, 5.6374 looks on a black background.

Color Contrast Check

Large Text (above 18pt) WCAG AA ✓ Pass

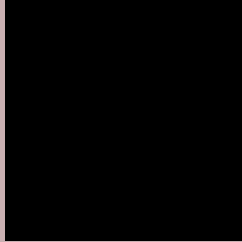
Any Text WCAG AA ✓ Pass

Large Text (above 18pt) WCAG AAA ✓ Pass

Any Text WCAG AAA ✓ Pass

If you want to check with other color combinations, try the [Color Contrast Checker](#).

HunterLab 68.3246, 4.9153, 5.6374 Background



This preview shows how black text looks on a background with the HunterLab color 68.3246, 4.9153, 5.6374.



This preview shows how white text looks on a background with the HunterLab color 68.3246, 4.9153,

Color Blindness Simulation

Color vision deficiency is a very complex topic, and I could not describe the different causes any better than Wikipedia does, so if you want to learn more, you should check out their [article about color blindness](#).

Dichromacy



Original Color

68.3246, 4.9153, 5.6374

Protanopia

68.3361, -2.3787, 4.1377

Deuteranopia

68.3246, 4.9153, 5.6374



Tritanopia

68.1612, 7.9133, 0.7544

Trichromacy



Original Color

68.3246, 4.9153, 5.6374

Protanomaly

68.2729, 0.3825, 4.5774

Deuteranomaly

68.3246, 4.9153, 5.6374

Tritanomaly

68.3207, 6.7325, 2.8634

Monochromacy



Original Color

68.3246, 4.9153, 5.6374

Achromatopsia

69.2330, -3.6941, 3.7616

Achromatomaly

68.8275, -0.6246, 4.2769

CSS Examples

Text

The CSS property to change the color of the text to HunterLab 68.3246, 4.9153, 5.6374 is called "color". The color property can be set on classes, ids or directly on the HTML element.

This example shows how text in the color `rgb(201, 176, 178)` looks like.

```
.text, #text, p{  
    color:rgb(201, 176, 178)  
}
```

If you want to add a text shadow in that color use the text-shadow property, you can generate a text shadow directly with our [CSS Text Shadow Generator](#).

Here you see how black text with a 4 pixel rgb(201, 176, 178) colored shadow looks like.

```
.shadow{ text-shadow: 4px 4px 2px rgb(201, 176, 178) }
```

Border

The CSS property to change the border of an element to HunterLab 68.3246, 4.9153, 5.6374 is called "border".

The border property can be set on classes, ids or directly on the HTML element.

This example shows the color as border, it can be applied via the CSS property "border" or "border-color".

```
.border, #border, table{ border:4px solid rgb(201, 176, 178) }
```


If only the border color should be changed use the property border-color.

```
.border{ border-color:rgb(201, 176, 178) }
```

If you want to add a box shadow in that color use:

Here you see how a box with a 4 pixel rgb(201, 176, 178) colored shadow looks like.

```
.boxshadow{ -moz-box-shadow:4px 4px 4px  
4px rgb(201, 176, 178); -webkit-box-  
shadow:4px 4px 4px 4px rgb(201, 176, 178);  
box-shadow:4px 4px 4px 4px rgb(201, 176,  
178) }
```

Background

The CSS property to change the background color of an element to HunterLab 68.3246, 4.9153, 5.6374 is called "background". The background property can be set on classes, ids or directly on the HTML element.

```
.background, #background, body{  
background: rgb(201, 176, 178) }
```

If only the background color should be changed can be used:

```
.background{ background-color: rgb(201,  
176, 178) }
```

This example shows the color as background, it is applied via the CSS property "background".

To optimize and compress your CSS code, you can use our [online CSS compressor and optimizer](#) based on csstidy. If you want to create a linear or radial gradient as background or border, check our [CSS Gradient Generator](#).

Hey! You found this booklet interesting? Support Converting Colors with the new Membership Option!

The pro membership hides all ads, plus gives you double the colors in the color bucket, and more awesome pro features!

[Learn more, Memberships starting at \\$2.50/m!](#)

**Follow me
on Twitter!**

@ConvertingColor