

Converting Colors

HunterLab(68.3071, 5.0260,
6.5977)

Have a look what the booklet for
HunterLab(68.3071, 5.0260, 6.5977)
contains.

HunterLab(68.3680, 4.9440, 6.5942)	3
<i>Conversions</i>	4
<i>Details</i>	6
<i>Harmonies</i>	12
<i>Previews</i>	24
<i>Color Blindness Simulation</i>	28
<i>CSS Examples</i>	31

Color

**HunterLab(68.3680, 4.9440,
6.5942)**

Conversions

Conversions Part 1

Format	Color
Hex	CAB0B0
RGB	202, 176, 176
RGB Percent	79%, 69%, 69%
CMY	0.2078, 0.3098, 0.3098
CMYK	0.00, 0.13, 0.13, 0.21
HSL	0°, 20%, 74%
HSV	0°, 13%, 79%
XYZ	47.7189, 46.7418, 47.5813
YIQ	183.7740, 15.4960, 5.5120

Conversions

Conversions Part 2

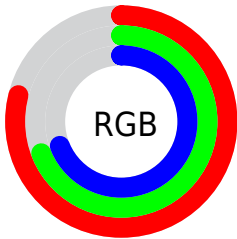
Format	Color
R _Y B	202, 176, 176
Decimal	13283504
CIE Lab	74.03, 9.36, 3.44
CIE LCh	74, 9.969, 20.213
Yxy	46.7439, 0.3359, 0.3291
Android (android.graphics.Color)	4291473584 (0xFFCAB0B0)
YUV	183.7740, -3.8326, 15.9842
Hunter-Lab	68.3680, 4.9440, 6.5942

Details

The HunterLab color $68.3680, 4.9440, 6.5942$ is a light color, and the websafe version is hex $CC9999$. A complement of this color would be $74.6554, -11.8498, 1.4178$, and the grayscale version is $69.1504, -3.6897, 3.7571$.

A 20% lighter version of the original color is $92.0866, 2.9569, 7.6410$, and $46.8157, 5.5152, 4.7944$ is the 20% darker color. If you saturate the color by 10%, you get $62.1793, 12.3238, 8.6235$, and if you desaturate by 10%, it is $74.9150, -2.1263, 4.6977$.

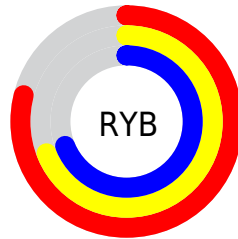
Distribution



Red (79%)

Green (69%)

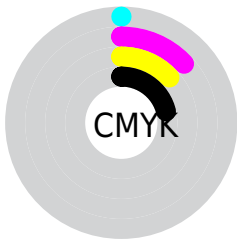
Blue (69%)



Red (79%)

Yellow (69%)

Blue (69%)

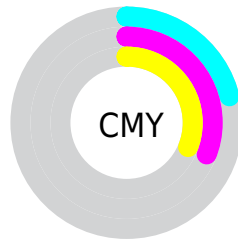


Cyan (0%)

Magenta (13%)

Yellow (13%)

Black (21%)



Cyan (21%)

Magenta (31%)

Yellow (31%)

Brightness & Saturation Gradients

These gradients show how the HunterLab color 68.3680, 4.9440, 6.5942 changes by changing the brightness by 10 percent. The first figure shows a shift by +10% for each color and the second figure -10%.

Similar to the brightness gradients but the following saturation gradients show a change of the HunterLab color 68.3680, 4.9440, 6.5942 by changing the saturation by 10% instead.

■ 68.3680, 4.9440,
6.5942

■ 68.3680, 4.9440,
6.5942

193.3369, 1.6813,
14.6333

■ 57.3003, 5.0661,
5.8209

■ 92.3749, 4.5253,
8.2182

■ 46.9028, 5.1259,
5.0714

105.2505, 4.2420,
9.0659

■ 37.2236, 5.1132,
4.3467

118.6743, 3.9135,
9.9373

■ 28.3206, 5.0167,
3.6457

132.6247, 3.5427,
10.8319

■ 20.2685, 4.8204,
2.9665

147.0826, 3.1321,
11.7492

■ 13.1690, 4.5005,
2.3034

162.0308, 2.6838,

■ 6.6758, 5.7500,

12.6888

2.5022

177.4536, 2.1997,
13.6503

0.0000, NaN, NaN

0.0000, NaN, NaN

■ 68.3680, 4.9440,
6.5942

■ 68.3680, 4.9440,
6.5942

■ 62.1793, 12.3238,
8.6235

■ 74.9150, -2.1263,
4.6977

■ 56.4107, 20.0129,
10.7849

■ 81.7631, -8.9047,
2.9190

■ 51.1465, 27.9416,
13.0627

■ 88.8723, -15.4282,
1.2445

■ 46.4865, 35.9313,
15.4043

■ 95.5493, -21.1833,
-0.1996

■ 42.5434, 43.6365,

17.7018

■ 39.4285, 50.5173,
19.7825

■ 37.2233, 55.9181,
21.4322

■ 35.9377, 59.3066,
22.4737

■ 35.4363, 60.6812,
22.8980

Harmonies

Analogous

The Analogous color harmony consists of three colors that are next to each other on the color wheel.



68.3695, 5.3835, 2.2601



68.3680, 4.9440, 6.5942



68.3695, 2.1641, 9.9396

Triad

The Triadic color harmony groups three colors that are evenly spaced from another and form a triangle on the color wheel.



68.3695, 4.9420, 6.5953



68.3695, -10.3870, 8.9433



68.3695, -5.1647, -5.2011

Complementary

The Complementary color scheme is a pair of colors which are on the opposite of each other on the color wheel.



68.3680, 4.9440, 6.5942



74.6554, -11.8498, 1.4178

Split Complementary

Split-complementary colors differ from the complementary color scheme. The scheme consists of three colors, the original color and two neighbors of the complement color.



68.3695, -9.2794, -3.1416



68.3680, 4.9440, 6.5942



68.3695, -12.2408, 5.1514

Square

The Square scheme is like the rectangle color scheme, but the four colors are evenly spaced on the color wheel.



68.3695, 4.9420, 6.5953



68.3695, -6.7134, 11.2311



68.3695, -11.8408, 0.7173



68.3695, -0.5351, -4.7501

Rectangle

The Rectangle color scheme consists of four colors that form a rectangle on the color wheel.



68.3680, 4.9440, 6.5942



68.3695, -0.5988, 11.2502



68.3695, -11.8408, 0.7173



68.3695, -6.6519, -4.7745

Sweetspot

The Sweet Spot groups the original color and five complimentary colors.



68.3695, 4.9420, 6.5953



96.4495, -1.6986, 6.3965



69.1897, 9.3139, -5.0852



44.3164, -0.4662, 3.0445

0.0000, NaN, NaN



46.2646, -2.4686, 2.5136

Same Dimension

The Same Dimension uses a secret algorithm to generate beautiful new colors.



68.3695, 4.9420, 6.5953



87.0382, 8.6354, 9.1822



72.1713, -1.6667, 10.6986



33.4872, 1.1644, 2.8091



28.4262, 48.6762, 18.3683



6.4572, 11.0535, 4.1724

Inverse Universe

The Inverse Universe completely reimagines the original color for something new.



74.6554, -11.8498, 1.4178



96.6695, -17.1140, 1.2423



70.6330, -5.4298, -3.4755



35.6746, -4.6737, 1.0092



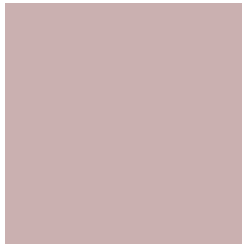
54.6966, -28.9924, -5.7797



12.4237, -6.5855, -1.3123

Previews

White Background



This preview shows how the HunterLab color 68.3680, 4.9440, 6.5942 looks on a white background.

Color Contrast Check

Large Text (above 18pt) WCAG AA × Fail

Any Text WCAG AA × Fail

Large Text (above 18pt) WCAG AAA × Fail

Any Text WCAG AAA × Fail

Black Background



This preview shows how the HunterLab color 68.3680, 4.9440, 6.5942 looks on a black background.

Color Contrast Check

Large Text (above 18pt) WCAG AA ✓ Pass

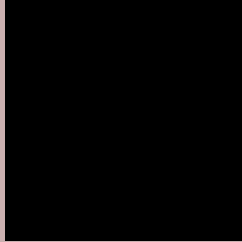
Any Text WCAG AA ✓ Pass

Large Text (above 18pt) WCAG AAA ✓ Pass

Any Text WCAG AAA ✓ Pass

If you want to check with other color combinations, try the [Color Contrast Checker](#).

HunterLab 68.3680, 4.9440, 6.5942 Background



This preview shows how black text looks on a background with the HunterLab color 68.3680, 4.9440, 6.5942.



This preview shows how white text looks on a background with the HunterLab color 68.3680, 4.9440,

6.5942.

Color Blindness Simulation

Color vision deficiency is a very complex topic, and I could not describe the different causes any better than Wikipedia does, so if you want to learn more, you should check out their [article about color blindness](#).

Dichromacy



Original Color

68.3680, 4.9440, 6.5942

Protanopia

68.3678, -2.3883, 5.1010

Deuteranopia

68.3680, 4.9440, 6.5942



Tritanopia

68.3669, 8.5929, 1.0175

Trichromacy



Original Color

68.3680, 4.9440, 6.5942

Protanomaly

68.3089, 0.3870, 5.5400

Deuteranomaly

68.3680, 4.9440, 6.5942

Tritanomaly

68.4231, 7.0727, 2.9913

Monochromacy



Original Color

68.3680, 4.9440, 6.5942

Achromatopsia

69.2330, -3.6941, 3.7616

Achromatomaly

68.8914, -0.4651, 4.8191

CSS Examples

Text

The CSS property to change the color of the text to HunterLab 68.3680, 4.9440, 6.5942 is called "color". The color property can be set on classes, ids or directly on the HTML element.

This example shows how text in the color `rgb(202, 176, 176)` looks like.

```
.text, #text, p{  
    color:rgb(202, 176, 176)  
}
```

If you want to add a text shadow in that color use the text-shadow property, you can generate a text shadow directly with our [CSS Text Shadow Generator](#).

Here you see how black text with a 4 pixel rgb(202, 176, 176) colored shadow looks like.

```
.shadow{ text-shadow: 4px 4px 2px rgb(202, 176, 176) }
```

Border

The CSS property to change the border of an element to HunterLab 68.3680, 4.9440, 6.5942 is called "border".

The border property can be set on classes, ids or directly on the HTML element.

This example shows the color as border, it can be applied via the CSS property "border" or "border-color".

```
.border, #border, table{ border:4px solid rgb(202, 176, 176) }
```


If only the border color should be changed use the property `border-color`.

```
.border{ border-color:rgb(202, 176, 176) }
```

If you want to add a box shadow in that color use:

Here you see how a box with a 4 pixel `rgb(202, 176, 176)` colored shadow looks like.

```
.boxshadow{ -moz-box-shadow:4px 4px 4px  
4px rgb(202, 176, 176); -webkit-box-  
shadow:4px 4px 4px 4px rgb(202, 176, 176);  
box-shadow:4px 4px 4px 4px rgb(202, 176,  
176) }
```

Background

The CSS property to change the background color of an element to HunterLab 68.3680, 4.9440, 6.5942 is called "background". The background property can be set on classes, ids or directly on the HTML element.

```
.background, #background, body{  
background: rgb(202, 176, 176) }
```

If only the background color should be changed can be used:

```
.background{ background-color: rgb(202,  
176, 176) }
```

This example shows the color as background, it is applied via the CSS property "background".

To optimize and compress your CSS code, you can use our [online CSS compressor and optimizer](#) based on csstidy. If you want to create a linear or radial gradient as background or border, check our [CSS Gradient Generator](#).

Hey! You found this booklet interesting? Support Converting Colors with the new Membership Option!

The pro membership hides all ads, plus gives you double the colors in the color bucket, and more awesome pro features!

[Learn more, Memberships starting at \\$2.50/m!](#)

**Follow me
on Twitter!**

@ConvertingColor