

Converting Colors

HunterLab(68.3457, 7.9316,
2.3356)

Have a look what the booklet for
HunterLab(68.3457, 7.9316, 2.3356)
contains.

HunterLab(68.2732, 8.0959, 2.3516)	3
<i>Conversions</i>	4
<i>Details</i>	6
<i>Harmonies</i>	12
<i>Previews</i>	24
<i>Color Blindness Simulation</i>	28
<i>CSS Examples</i>	31

Color

**HunterLab(68.2732, 8.0959,
2.3516)**

Conversions

Conversions Part 1

Format	Color
Hex	CCAEB9
RGB	204, 174, 185
RGB Percent	80%, 68%, 73%
CMY	0.2000, 0.3176, 0.2745
CMYK	0.00, 0.15, 0.09, 0.20
HSL	338°, 23%, 74%
HSV	338°, 15%, 80%
XYZ	48.7949, 46.6123, 52.3243
YIQ	184.2240, 14.3490, 9.7810

Conversions

Conversions Part 2

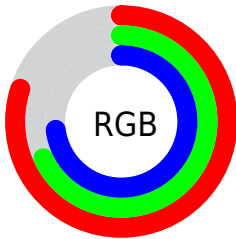
Format	Color
RYB	204, 174, 185
Decimal	13414073
CIELab	73.94, 12.68, -1.58
CIELCh	74, 12.777, 352.883
Yxy	46.6144, 0.3303, 0.3155
Android (android.graphics.Color)	4291604153 (0xFFCCAEB9)
YUV	184.2240, 0.3826, 17.3436
Hunter-Lab	68.2732, 8.0959, 2.3516

Details

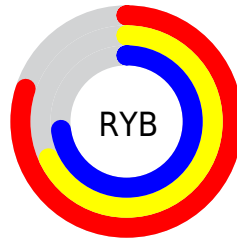
The HunterLab color $68.2732, 8.0959, 2.3516$ is a light color, and the websafe version is hex $CC9999$. A complement of this color would be $74.8571, -14.9302, 5.9029$, and the grayscale version is $69.3225, -3.6989, 3.7664$.

A 20% lighter version of the original color is $91.7630, 5.5645, 2.8718$, and $46.9777, 7.8492, 1.5337$ is the 20% darker color. If you saturate the color by 10%, you get $62.2897, 16.6417, 1.4856$, and if you desaturate by 10%, it is $74.6159, -0.2759, 3.5577$.

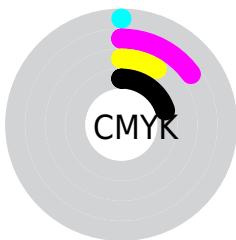
Distribution



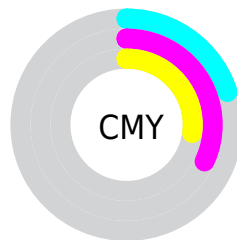
- Red (80%)
- Green (68%)
- Blue (73%)



- Red (80%)
- Yellow (68%)
- Blue (73%)



- Cyan (0%)
- Magenta (15%)
- Yellow (9%)
- Black (20%)



- Cyan (20%)
- Magenta (32%)
- Yellow (27%)

Brightness & Saturation Gradients

These gradients show how the HunterLab color 68.2732, 8.0959, 2.3516 changes by changing the brightness by 10 percent. The first figure shows a shift by +10% for each color and the second figure -10%.

Similar to the brightness gradients but the following saturation gradients show a change of the HunterLab color 68.2732, 8.0959, 2.3516 by changing the saturation by 10% instead.

■ 68.2732, 8.0959,
2.3516

■ 68.2732, 8.0959,
2.3516

193.2028, 6.0199,
8.5977

■ 57.2109, 8.0578,
1.8270

■ 92.2701, 7.9759,
3.5177

■ 46.8192, 7.9486,
1.3425

105.1410, 7.8328,
4.1525

■ 37.1462, 7.7565,
0.9031

118.5603, 7.6392,
4.8197

■ 28.2499, 7.4684,
0.5133

132.5065, 7.3987,
5.5180

■ 20.2053, 7.0657,
0.1795

146.9602, 7.1142,
6.2460

■ 13.1142, 6.5221,
-0.0891

161.9043, 6.7881,

■ 6.6064, 8.0099,

7.0026

-0.6336

177.3233, 6.4227,
7.7868

0.0000, NaN, NaN

0.0000, NaN, NaN

■ 68.2732, 8.0959,
2.3516

■ 68.2732, 8.0959,
2.3516

■ 62.2897, 16.6417,
1.4856

■ 74.6159, -0.2759,
3.5577

■ 56.7251, 25.3093,
1.0375

■ 81.2616, -8.4535,
5.0347

■ 51.6594, 33.9609,
1.1049

■ 88.1708, -16.4479,
6.7329

■ 47.1850, 42.3396,
1.7896

■ 95.1071, -23.9813,
8.3864

■ 43.4033, 50.0288,

■ 95.5171, -21.6592,

3.1759

2.5373

■ 40.4102, 56.4591,
5.2886

■ 95.6961, -20.6482,
-0.0096

■ 38.2704, 61.0240,
8.0430

■ 36.9810, 63.3308,
11.2163

■ 36.5275, 63.9371,
12.8849

Harmonies

Analogous

The Analogous color harmony consists of three colors that are next to each other on the color wheel.



68.2747, 5.7282, -3.1903



68.2732, 8.0959, 2.3516



68.2747, 7.2286, 7.8187

Triad

The Triadic color harmony groups three colors that are evenly spaced from another and form a triangle on the color wheel.



68.2747, 8.0939, 2.3528



68.2747, -8.0434, 13.0112



68.2747, -10.4213, -5.5547

Complementary

The Complementary color scheme is a pair of colors which are on the opposite of each other on the color wheel.



68.2732, 8.0959, 2.3516



74.8571, -14.9302, 5.9029

Split Complementary

Split-complementary colors differ from the complementary color scheme. The scheme consists of three colors, the original color and two neighbors of the complement color.



68.2747, -13.8811, -0.6574



68.2732, 8.0959, 2.3516



68.2747, -12.5415, 9.9693

Square

The Square scheme is like the rectangle color scheme, but the four colors are evenly spaced on the color wheel.



68.2747, 8.0939, 2.3528



68.2747, -2.2219, 13.6676



68.2747, -14.6438, 5.0524



68.2747, -5.0597, -8.0026

Rectangle

The Rectangle color scheme consists of four colors that form a rectangle on the color wheel.



68.2732, 8.0959, 2.3516



68.2747, 4.9497, 10.7225



68.2747, -14.6438, 5.0524



68.2747, -11.8377, -4.1212

Sweetspot

The Sweet Spot groups the original color and five complimentary colors.



68.2747, 8.0939, 2.3528



96.5685, -1.0483, 4.6923



67.8023, 7.7902, -8.0394



44.3817, -0.1099, 2.1093

0.0000, NaN, NaN



46.2646, -2.4686, 2.5136

Same Dimension

The Same Dimension uses a secret algorithm to generate beautiful new colors.



68.2747, 8.0939, 2.3528



85.0864, 14.2760, 2.5792



69.0914, 4.2980, 8.2832



33.5865, 1.7015, 1.3861



29.0075, 50.8290, 9.8086



6.6978, 11.9444, 0.6515

Inverse Universe

The Inverse Universe completely reimagines the original color for something new.



68.2747, 8.0939, 2.3528



85.0864, 14.2760, 2.5792



73.9379, -11.0709, -0.4434



33.5865, 1.7015, 1.3861



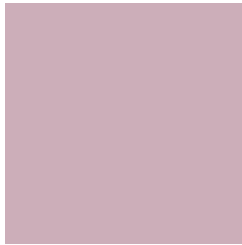
29.0075, 50.8290, 9.8086



6.6978, 11.9444, 0.6515

Previews

White Background



This preview shows how the HunterLab color 68.2732, 8.0959, 2.3516 looks on a white background.

Color Contrast Check

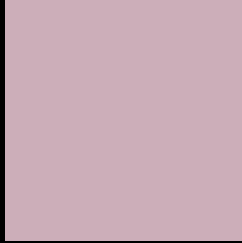
Large Text (above 18pt) WCAG AA × Fail

Any Text WCAG AA × Fail

Large Text (above 18pt) WCAG AAA × Fail

Any Text WCAG AAA × Fail

Black Background



This preview shows how the HunterLab color 68.2732, 8.0959, 2.3516 looks on a black background.

Color Contrast Check

Large Text (above 18pt) WCAG AA ✓ Pass

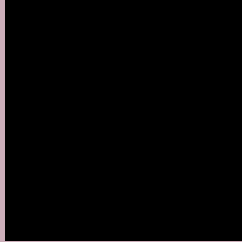
Any Text WCAG AA ✓ Pass

Large Text (above 18pt) WCAG AAA ✓ Pass

Any Text WCAG AAA ✓ Pass

If you want to check with other color combinations, try the [Color Contrast Checker](#).

HunterLab 68.2732, 8.0959, 2.3516 Background



This preview shows how black text looks on a background with the HunterLab color 68.2732, 8.0959, 2.3516.



This preview shows how white text looks on a background with the HunterLab color 68.2732, 8.0959,

Color Blindness Simulation

Color vision deficiency is a very complex topic, and I could not describe the different causes any better than Wikipedia does, so if you want to learn more, you should check out their [article about color blindness](#).

Dichromacy



Original Color

68.2732, 8.0959, 2.3516

Protanopia

68.4026, -1.6547, 0.3900

Deuteranopia

68.2343, 5.0350, 2.2514



Tritanopia

68.3354, 8.4263, 1.4649

Trichromacy



Original Color

68.2732, 8.0959, 2.3516

Protanomaly

68.2261, 2.2188, 0.7340

Deuteranomaly

68.1484, 6.2205, 2.1690

Tritanomaly

68.3042, 8.2606, 1.9096

Monochromacy



Original Color

68.2732, 8.0959, 2.3516

Achromatopsia

69.2330, -3.6941, 3.7616

Achromatomaly

68.6874, 0.5311, 3.1909

CSS Examples

Text

The CSS property to change the color of the text to HunterLab 68.2732, 8.0959, 2.3516 is called "color". The color property can be set on classes, ids or directly on the HTML element.

This example shows how text in the color `rgb(204, 174, 185)` looks like.

```
.text, #text, p{  
    color:rgb(204, 174, 185)  
}
```

If you want to add a text shadow in that color use the text-shadow property, you can generate a text shadow directly with our [CSS Text Shadow Generator](#).

Here you see how black text with a 4 pixel rgb(204, 174, 185) colored shadow looks like.

```
.shadow{ text-shadow: 4px 4px 2px rgb(204, 174, 185) }
```

Border

The CSS property to change the border of an element to HunterLab 68.2732, 8.0959, 2.3516 is called "border".

The border property can be set on classes, ids or directly on the HTML element.

This example shows the color as border, it can be applied via the CSS property "border" or "border-color".

```
.border, #border, table{ border:4px solid rgb(204, 174, 185) }
```


If only the border color should be changed use the property `border-color`.

```
.border{ border-color:rgb(204, 174, 185) }
```

If you want to add a box shadow in that color use:

Here you see how a box with a 4 pixel `rgb(204, 174, 185)` colored shadow looks like.

```
.boxshadow{ -moz-box-shadow:4px 4px 4px  
4px rgb(204, 174, 185); -webkit-box-  
shadow:4px 4px 4px 4px rgb(204, 174, 185);  
box-shadow:4px 4px 4px 4px rgb(204, 174,  
185) }
```

Background

The CSS property to change the background color of an element to HunterLab 68.2732, 8.0959, 2.3516 is called "background". The background property can be set on classes, ids or directly on the HTML element.

```
.background, #background, body{  
background: rgb(204, 174, 185) }
```

If only the background color should be changed can be used:

```
.background{ background-color: rgb(204,  
174, 185) }
```

This example shows the color as background, it is applied via the CSS property "background".

To optimize and compress your CSS code, you can use our [online CSS compressor and optimizer](#) based on csstidy. If you want to create a linear or radial gradient as background or border, check our [CSS Gradient Generator](#).

Hey! You found this booklet interesting? Support Converting Colors with the new Membership Option!

The pro membership hides all ads, plus gives you double the colors in the color bucket, and more awesome pro features!

[Learn more, Memberships starting at \\$2.50/m!](#)

**Follow me
on Twitter!**

@ConvertingColor