

Converting Colors

HunterLab(68.3718, 0.3692,
7.9015)

Have a look what the booklet for
HunterLab(68.3718, 0.3692, 7.9015)
contains.

HunterLab(68.3569, 0.2627, 7.8346)	3
<i>Conversions</i>	4
<i>Details</i>	6
<i>Harmonies</i>	12
<i>Previews</i>	24
<i>Color Blindness Simulation</i>	28
<i>CSS Examples</i>	31

Color

**HunterLab(68.3569, 0.2627,
7.8346)**

Conversions

Conversions Part 1

Format	Color
Hex	C2B3AD
RGB	194, 179, 173
RGB Percent	76%, 70%, 68%
CMY	0.2392, 0.2980, 0.3216
CMYK	0.00, 0.08, 0.11, 0.24
HSL	17°, 15%, 72%
HSV	17°, 11%, 76%
XYZ	45.9111, 46.7267, 46.1345
YIQ	182.8010, 10.8660, 1.3140

Conversions

Conversions Part 2

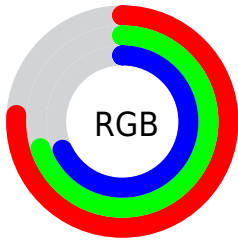
Format	Color
R_YB	194, 181, 173
Decimal	12759981
CIE Lab	74.02, 4.31, 4.98
CIE LCh	74, 6.590, 49.108
Yxy	46.7287, 0.3308, 0.3367
Android (android.graphics.Color)	4290950061 (0xFFC2B3AD)
YUV	182.8010, -4.8319, 9.8215
Hunter-Lab	68.3569, 0.2627, 7.8346

Details

The HunterLab color $68.3569, 0.2627, 7.8346$ is a light color, and the websafe version is hex `CCCCCC`. A complement of this color would be $69.8175, -7.2476, -0.4491$, and the grayscale version is $68.7479, -3.6682, 3.7352$.

A 20% lighter version of the original color is $92.4810, -0.6847, 9.9181$, and $46.7735, 1.0632, 5.9105$ is the 20% darker color. If you saturate the color by 10%, you get $63.8388, 4.4049, 11.1823$, and if you desaturate by 10%, it is $73.0551, -3.6112, 4.2907$.

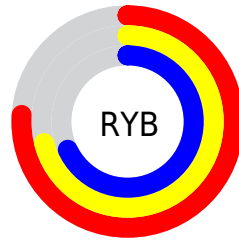
Distribution



Red (76%)

Green (70%)

Blue (68%)



Red (76%)

Yellow (71%)

Blue (68%)

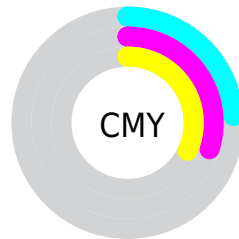


Cyan (0%)

Magenta (8%)

Yellow (11%)

Black (24%)



Cyan (24%)

Magenta (30%)

Yellow (32%)

Brightness & Saturation Gradients

These gradients show how the HunterLab color 68.3569, 0.2627, 7.8346 changes by changing the brightness by 10 percent. The first figure shows a shift by +10% for each color and the second figure -10%.

Similar to the brightness gradients but the following saturation gradients show a change of the HunterLab color 68.3569, 0.2627, 7.8346 by changing the saturation by 10% instead.

■ 68.3569, 0.2627,
7.8346

■ 68.3569, 0.2627,
7.8346

193.3211, -4.8241,
16.4368

■ 57.2898, 0.6334,
6.9822

■ 92.3626, -0.6172,
9.6034

■ 46.8930, 0.9564,
6.1479

105.2377, -1.1164,
10.5182

■ 37.2145, 1.2242,
5.3313

118.6609, -1.6524,
11.4537

■ 28.3123, 1.4297,
4.5294

132.6109, -2.2233,
12.4099

■ 20.2611, 1.5623,
3.7366

147.0683, -2.8274,
13.3865

■ 13.1626, 1.6063,
2.9418

162.0159, -3.4630,

■ 6.6677, 2.4633,

14.3833

3.4601

177.4383, -4.1290,
15.4002

0.0000, NaN, NaN

0.0000, NaN, NaN

■ 68.3569, 0.2627,
7.8346

■ 68.3569, 0.2627,
7.8346

■ 63.8388, 4.4049,
11.1823

■ 73.0551, -3.6112,
4.2907

■ 59.5191, 8.8452,
14.2894

■ 77.9098, -7.2376,
0.5796

■ 55.4258, 13.5981,
17.1048

■ 82.9063, -10.6448,
-3.2725

■ 51.5902, 18.6658,
19.5640

■ 88.0311, -13.8580,
-7.2461

■ 48.0479, 24.0248,

■ 92.7324, -19.9357,

21.5900

-3.6967

■ 44.8386, 29.6112,
23.0980

■ 94.9787, -23.2709,
-0.9405

■ 42.0036, 35.3049,
24.0065

■ 39.5825, 40.9154,
24.2624

■ 37.7437, 45.7320,
24.0581

Harmonies

Analogous

The Analogous color harmony consists of three colors that are next to each other on the color wheel.



68.3584, 2.0231, 5.5357



68.3569, 0.2627, 7.8346



68.3584, -2.5308, 9.0144

Triad

The Triadic color harmony groups three colors that are evenly spaced from another and form a triangle on the color wheel.



68.3584, 0.2608, 7.8357



68.3584, -9.3581, 4.7747



68.3584, -1.7058, -1.8070

Complementary

The Complementary color scheme is a pair of colors which are on the opposite of each other on the color wheel.



68.3569, 0.2627, 7.8346



69.8175, -7.2476, -0.4491

Split Complementary

Split-complementary colors differ from the complementary color scheme. The scheme consists of three colors, the original color and two neighbors of the complement color.



68.3584, -4.7642, -2.0329



68.3569, 0.2627, 7.8346



68.3584, -9.1460, 1.8550

Square

The Square scheme is like the rectangle color scheme, but the four colors are evenly spaced on the color wheel.



68.3584, 0.2608, 7.8357



68.3584, -8.0614, 7.2998



68.3584, -7.4769, -0.6666



68.3584, 0.8739, -0.0625

Rectangle

The Rectangle color scheme consists of four colors that form a rectangle on the color wheel.



68.3569, 0.2627, 7.8346



68.3584, -4.5840, 9.0423



68.3584, -7.4769, -0.6666



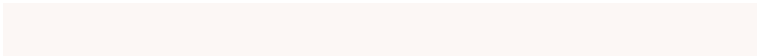
68.3584, -2.7131, -2.0659

Sweetspot

The Sweet Spot groups the original color and five complimentary colors.



68.3584, 0.2608, 7.8357



96.9080, -3.7319, 6.8568



67.0747, 5.7663, -0.6486



45.1058, -1.5504, 3.3933

0.0000, NaN, NaN



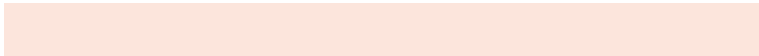
46.2646, -2.4686, 2.5136

Same Dimension

The Same Dimension uses a secret algorithm to generate beautiful new colors.



68.3584, 0.2608, 7.8357



90.5393, 1.6450, 11.6458



71.4676, -4.9668, 11.1518



32.4599, -0.1504, 3.4469



30.8043, 36.4984, 19.6204



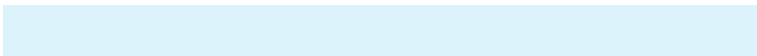
7.2907, 5.2334, 4.5841

Inverse Universe

The Inverse Universe completely reimagines the original color for something new.



69.8175, -7.2476, -0.4491



92.9283, -10.6544, -1.9219



66.6648, -2.0556, -4.3506



33.0546, -3.2102, 0.0703



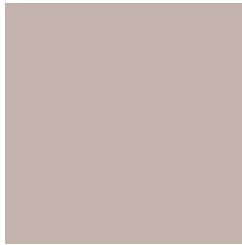
38.4177, -9.1460, -28.2752



8.6632, -2.8690, -4.6348

Previews

White Background



This preview shows how the HunterLab color 68.3569, 0.2627, 7.8346 looks on a white background.

Color Contrast Check

Large Text (above 18pt) WCAG AA × Fail

Any Text WCAG AA × Fail

Large Text (above 18pt) WCAG AAA × Fail

Any Text WCAG AAA × Fail

Black Background



This preview shows how the HunterLab color 68.3569, 0.2627, 7.8346 looks on a black background.

Color Contrast Check

Large Text (above 18pt) WCAG AA ✓ Pass

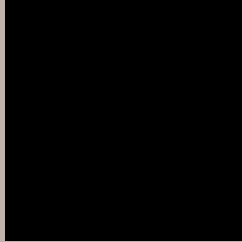
Any Text WCAG AA ✓ Pass

Large Text (above 18pt) WCAG AAA ✓ Pass

Any Text WCAG AAA ✓ Pass

If you want to check with other color combinations, try the [Color Contrast Checker](#).

HunterLab 68.3569, 0.2627, 7.8346 Background



This preview shows how black text looks on a background with the HunterLab color 68.3569, 0.2627, 7.8346.



This preview shows how white text looks on a background with the HunterLab color 68.3569, 0.2627,

Color Blindness Simulation

Color vision deficiency is a very complex topic, and I could not describe the different causes any better than Wikipedia does, so if you want to learn more, you should check out their [article about color blindness](#).

Dichromacy



Original Color

68.3569, 0.2627, 7.8346

Protanopia

68.3144, -2.8640, 7.2903

Deuteranopia

68.4128, 4.9795, 7.5384



Tritanopia

68.1939, 5.2148, -0.2425

Trichromacy



Original Color

68.3569, 0.2627, 7.8346

Protanomaly

68.2976, -1.3972, 7.2972

Deuteranomaly

68.3956, 3.4427, 7.4921

Tritanomaly

68.1961, 3.3618, 2.6557

Monochromacy



Original Color

68.3569, 0.2627, 7.8346

Achromatopsia

68.8136, -3.6717, 3.7388

Achromatomaly

68.7571, -2.5708, 5.5471

CSS Examples

Text

The CSS property to change the color of the text to HunterLab 68.3569, 0.2627, 7.8346 is called "color". The color property can be set on classes, ids or directly on the HTML element.

This example shows how text in the color `rgb(194, 179, 173)` looks like.

```
.text, #text, p{  
    color:rgb(194, 179, 173)  
}
```

If you want to add a text shadow in that color use the text-shadow property, you can generate a text shadow directly with our [CSS Text Shadow Generator](#).

Here you see how black text with a 4 pixel rgb(194, 179, 173) colored shadow looks like.

```
.shadow{ text-shadow: 4px 4px 2px rgb(194, 179, 173) }
```

Border

The CSS property to change the border of an element to HunterLab 68.3569, 0.2627, 7.8346 is called "border". The border property can be set on classes, ids or directly on the HTML element.

This example shows the color as border, it can be applied via the CSS property "border" or "border-color".

```
.border, #border, table{ border:4px solid rgb(194, 179, 173) }
```


If only the border color should be changed use the property `border-color`.

```
.border{ border-color:rgb(194, 179, 173) }
```

If you want to add a box shadow in that color use:

Here you see how a box with a 4 pixel `rgb(194, 179, 173)` colored shadow looks like.

```
.boxshadow{ -moz-box-shadow:4px 4px 4px  
4px rgb(194, 179, 173); -webkit-box-  
shadow:4px 4px 4px 4px rgb(194, 179, 173);  
box-shadow:4px 4px 4px 4px rgb(194, 179,  
173) }
```

Background

The CSS property to change the background color of an element to HunterLab 68.3569, 0.2627, 7.8346 is called "background". The background property can be set on classes, ids or directly on the HTML element.

```
.background, #background, body{  
background: rgb(194, 179, 173) }
```

If only the background color should be changed can be used:

```
.background{ background-color: rgb(194,  
179, 173) }
```

This example shows the color as background, it is applied via the CSS property "background".

To optimize and compress your CSS code, you can use our [online CSS compressor and optimizer](#) based on csstidy. If you want to create a linear or radial gradient as background or border, check our [CSS Gradient Generator](#).

Hey! You found this booklet interesting? Support Converting Colors with the new Membership Option!

The pro membership hides all ads, plus gives you double the colors in the color bucket, and more awesome pro features!

[Learn more, Memberships starting at \\$2.50/m!](#)

**Follow me
on Twitter!**

@ConvertingColor