

Converting Colors

HunterLab(68.4032, -0.7311,
15.0124)

Have a look what the booklet for
HunterLab(68.4032, -0.7311,
15.0124) contains.

HunterLab(68.3978, -0.4992, 14.8734)	3
<i>Conversions</i>	4
<i>Details</i>	6
<i>Harmonies</i>	12
<i>Previews</i>	24
<i>Color Blindness Simulation</i>	28
<i>CSS Examples</i>	31

Color

**HunterLab(68.3978, -0.4992,
14.8734)**

Conversions

Conversions Part 1

Format	Color
Hex	C7B39C
RGB	199, 179, 156
RGB Percent	78%, 70%, 61%
CMY	0.2196, 0.2980, 0.3882
CMYK	0.00, 0.10, 0.22, 0.22
HSL	32°, 28%, 70%
HSV	32°, 22%, 78%
XYZ	45.6740, 46.7826, 38.0751
YIQ	182.3580, 19.3030, -2.9130

Conversions

Conversions Part 2

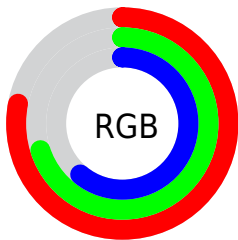
Format	Color
R_{YB}	193, 199, 156
Decimal	13087644
CIE _{Lab}	74.05, 3.48, 14.36
CIE _{LCh}	74, 14.773, 76.363
Yxy	46.7847, 0.3499, 0.3584
Android (android.graphics.Color)	4291277724 (0xFFC7B39C)
YUV	182.3580, -12.9945, 14.5950
Hunter-Lab	68.3978, -0.4992, 14.8734

Details

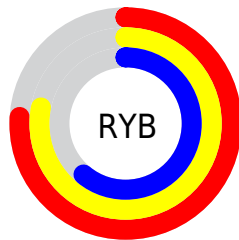
The HunterLab color $68.3978, -0.4992, 14.8734$ is a light color, and the websafe version is hex `CCCCCC`. A complement of this color would be $64.9931, -5.1321, -9.3331$, and the grayscale version is $68.5929, -3.6599, 3.7268$.

A 20% lighter version of the original color is $92.4012, -1.9308, 17.3592$, and $46.8630, 0.5978, 11.9786$ is the 20% darker color. If you saturate the color by 10%, you get $65.2524, 1.6101, 19.0379$, and if you desaturate by 10%, it is $71.6589, -2.3031, 10.1733$.

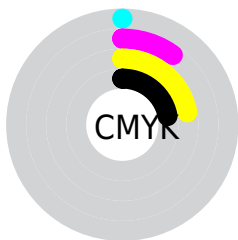
Distribution



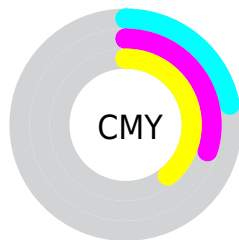
- Red (78%)
- Green (70%)
- Blue (61%)



- Red (76%)
- Yellow (78%)
- Blue (61%)



- Cyan (0%)
- Magenta (10%)
- Yellow (22%)
- Black (22%)



- Cyan (22%)
- Magenta (30%)
- Yellow (39%)

Brightness & Saturation Gradients

These gradients show how the HunterLab color 68.3978, -0.4992, 14.8734 changes by changing the brightness by 10 percent. The first figure shows a shift by +10% for each color and the second figure -10%.

Similar to the brightness gradients but the following saturation gradients show a change of the HunterLab color 68.3978, -0.4992, 14.8734 by changing the saturation by 10% instead.

■ 68.3978, -0.4992,
14.8734

■ 68.3978, -0.4992,
14.8734

193.3790, -5.8916,
27.0576

■ 57.3284, -0.0869,
13.5097

■ 92.4079, -1.4568,
17.5723

■ 46.9291, 0.2806,
12.1246

■ 105.2849, -1.9922,
18.9155

■ 37.2480, 0.5960,
10.7073

118.7101, -2.5630,
20.2594

■ 28.3428, 0.8529,
9.2397

132.6619, -3.1674,
21.6064

■ 20.2884, 1.0420,
7.6926

147.1211, -3.8038,
22.9585

■ 13.1862, 1.1492,
6.1274

162.0705, -4.4707,

■ 6.6975, 1.9083,

24.3169

4.6882

177.4946, -5.1670,
25.6830

0.0000, NaN, NaN

0.0000, NaN, NaN

■ 68.3978, -0.4992,
14.8734

■ 68.3978, -0.4992,
14.8734

■ 65.2524, 1.6101,
19.0379

■ 71.6589, -2.3031,
10.1733

■ 62.2271, 4.0494,
22.6133

■ 75.0230, -3.8150,
4.9830

■ 59.3328, 6.8314,
25.5491

■ 78.4839, -5.0576,
-0.6522

■ 56.5795, 9.9646,
27.7966

■ 82.0350, -6.0512,
-6.6916

■ 53.9771, 13.4485,

■ 85.6511, -6.9188,

29.3153

-12.8333

■ 51.5353, 17.2686,
30.0821

■ 88.6054, -11.6703,
-8.9125

■ 49.2623, 21.3902,
30.1061

■ 91.6148, -16.3632,
-5.0608

■ 47.4822, 25.0050,
29.6960

■ 94.6761, -20.9994,
-1.2759

■ 95.3321, -21.9761,
-0.4810

Harmonies

Analogous

The Analogous color harmony consists of three colors that are next to each other on the color wheel.



68.3993, 5.7325, 12.2315



68.3978, -0.4992, 14.8734



68.3993, -7.3463, 14.7464

Triad

The Triadic color harmony groups three colors that are evenly spaced from another and form a triangle on the color wheel.



68.3993, -0.5013, 14.8744



68.3993, -15.9078, 0.0762



68.3993, 6.2026, -5.5584

Complementary

The Complementary color scheme is a pair of colors which are on the opposite of each other on the color wheel.



68.3978, -0.4992, 14.8734



64.9931, -5.1321, -9.3331

Split Complementary

Split-complementary colors differ from the complementary color scheme. The scheme consists of three colors, the original color and two neighbors of the complement color.



68.3993, 0.1197, -9.5082



68.3978, -0.4992, 14.8734



68.3993, -12.5587, -6.0415

Square

The Square scheme is like the rectangle color scheme, but the four colors are evenly spaced on the color wheel.



68.3993, -0.5013, 14.8744



68.3993, -16.0592, 6.6286



68.3993, -6.7492, -9.6933



68.3993, 9.7052, 0.6844

Rectangle

The Rectangle color scheme consists of four colors that form a rectangle on the color wheel.



68.3978, -0.4992, 14.8734



68.3993, -11.3332, 13.1152



68.3993, -6.7492, -9.6933



68.3993, 4.3812, -7.2242

Sweetspot

The Sweet Spot groups the original color and five complimentary colors.



68.3993, -0.5013, 14.8744



97.2613, -4.1974, 9.7470



62.4955, 14.2643, -0.2417



44.8610, -1.8808, 4.7204

0.0000, NaN, NaN



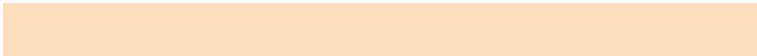
46.2646, -2.4686, 2.5136

Same Dimension

The Same Dimension uses a secret algorithm to generate beautiful new colors.



68.3993, -0.5013, 14.8744



88.5005, 0.6177, 22.4050



74.2929, -10.8432, 20.4878



34.0012, -1.2511, 4.2543



38.3069, 19.5339, 23.9465



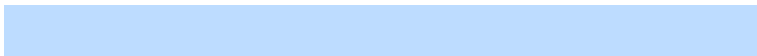
9.1585, 2.5207, 5.6876

Inverse Universe

The Inverse Universe completely reimagines the original color for something new.



64.9931, -5.1321, -9.3331



83.0307, -6.7870, -16.5126



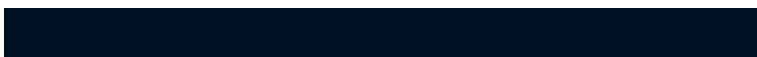
59.2561, 5.3101, -17.4577



33.2970, -2.2145, -0.7421



27.9382, 9.9246, -56.3448



7.1707, 0.1017, -9.1823

Previews

White Background



This preview shows how the HunterLab color 68.3978, -0.4992, 14.8734 looks on a white background.

Color Contrast Check

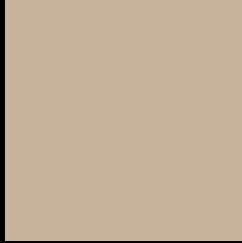
Large Text (above 18pt) WCAG AA × Fail

Any Text WCAG AA × Fail

Large Text (above 18pt) WCAG AAA × Fail

Any Text WCAG AAA × Fail

Black Background



This preview shows how the HunterLab color 68.3978, -0.4992, 14.8734 looks on a black background.

Color Contrast Check

Large Text (above 18pt) WCAG AA ✓ Pass

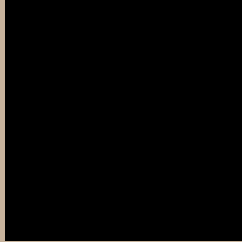
Any Text WCAG AA ✓ Pass

Large Text (above 18pt) WCAG AAA ✓ Pass

Any Text WCAG AAA ✓ Pass

If you want to check with other color combinations, try the [Color Contrast Checker](#).

HunterLab 68.3978, -0.4992, 14.8734 Background



This preview shows how black text looks on a background with the HunterLab color 68.3978, -0.4992, 14.8734.



This preview shows how white text looks on a background with the HunterLab color 68.3978, -0.4992,

Color Blindness Simulation

Color vision deficiency is a very complex topic, and I could not describe the different causes any better than Wikipedia does, so if you want to learn more, you should check out their [article about color blindness](#).

Dichromacy



Original Color

68.3978, -0.4992, 14.8734

Protanopia

68.5322, -4.5478, 14.5531

Deuteranopia

68.3005, 5.1626, 14.4867



Tritanopia

68.2638, 8.2525, 0.8857

Trichromacy



Original Color

68.3978, -0.4992, 14.8734

Protanomaly

68.5211, -3.0556, 14.5679

Deuteranomaly

68.1646, 3.2338, 14.3140

Tritanomaly

68.3680, 4.9440, 6.5942

Monochromacy



Original Color

68.3978, -0.4992, 14.8734

Achromatopsia

68.3947, -3.6494, 3.7160

Achromatomaly

68.3785, -2.6985, 7.8069

CSS Examples

Text

The CSS property to change the color of the text to HunterLab 68.3978, -0.4992, 14.8734 is called "color". The color property can be set on classes, ids or directly on the HTML element.

This example shows how text in the color `rgb(199, 179, 156)` looks like.

```
.text, #text, p{  
    color:rgb(199, 179, 156)  
}
```

If you want to add a text shadow in that color use the text-shadow property, you can generate a text shadow directly with our [CSS Text Shadow Generator](#).

Here you see how black text with a 4 pixel rgb(199, 179, 156) colored shadow looks like.

```
.shadow{ text-shadow: 4px 4px 2px rgb(199, 179, 156) }
```

Border

The CSS property to change the border of an element to HunterLab 68.3978, -0.4992, 14.8734 is called "border". The border property can be set on classes, ids or directly on the HTML element.

This example shows the color as border, it can be applied via the CSS property "border" or "border-color".

```
.border, #border, table{ border:4px solid rgb(199, 179, 156) }
```


If only the border color should be changed use the property `border-color`.

```
.border{ border-color:rgb(199, 179, 156) }
```

If you want to add a box shadow in that color use:

Here you see how a box with a 4 pixel `rgb(199, 179, 156)` colored shadow looks like.

```
.boxshadow{ -moz-box-shadow:4px 4px 4px  
4px rgb(199, 179, 156); -webkit-box-  
shadow:4px 4px 4px 4px rgb(199, 179, 156);  
box-shadow:4px 4px 4px 4px rgb(199, 179,  
156) }
```

Background

The CSS property to change the background color of an element to HunterLab 68.3978, -0.4992, 14.8734 is called "background". The background property can be set on classes, ids or directly on the HTML element.

```
.background, #background, body{  
background: rgb(199, 179, 156) }
```

If only the background color should be changed can be used:

```
.background{ background-color: rgb(199,  
179, 156) }
```

This example shows the color as background, it is applied via the CSS property "background".

To optimize and compress your CSS code, you can use our [online CSS compressor and optimizer](#) based on csstidy. If you want to create a linear or radial gradient as background or border, check our [CSS Gradient Generator](#).

Hey! You found this booklet interesting? Support Converting Colors with the new Membership Option!

The pro membership hides all ads, plus gives you double the colors in the color bucket, and more awesome pro features!

[Learn more, Memberships starting at \\$2.50/m!](#)

**Follow me
on Twitter!**

@ConvertingColor