

Converting Colors

HunterLab(68.4690, 1.9284,
8.4979)

Have a look what the booklet for
HunterLab(68.4690, 1.9284, 8.4979)
contains.

HunterLab(68.4289, 1.9525, 8.3825)	3
<i>Conversions</i>	4
<i>Details</i>	6
<i>Harmonies</i>	12
<i>Previews</i>	24
<i>Color Blindness Simulation</i>	28
<i>CSS Examples</i>	31

Color

**HunterLab(68.4289, 1.9525,
8.3825)**

Conversions

Conversions Part 1

Format	Color
Hex	C6B2AC
RGB	198, 178, 172
RGB Percent	78%, 70%, 67%
CMY	0.2235, 0.3019, 0.3255
CMYK	0.00, 0.10, 0.13, 0.22
HSL	14°, 19%, 73%
HSV	14°, 13%, 78%
XYZ	46.6555, 46.8251, 45.6090
YIQ	183.2960, 13.8460, 2.3740

Conversions

Conversions Part 2

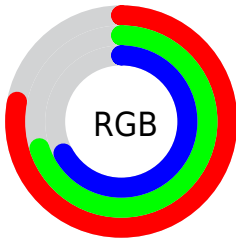
Format	Color
R _Y B	198, 180, 172
Decimal	13021868
CIE Lab	74.08, 6.15, 5.66
CIE LCh	74, 8.361, 42.638
Yxy	46.8272, 0.3354, 0.3367
Android (android.graphics.Color)	4291211948 (0xFFC6B2AC)
YUV	183.2960, -5.5689, 12.8954
Hunter-Lab	68.4289, 1.9525, 8.3825

Details

The HunterLab color $68.4289, 1.9525, 8.3825$ is a light color, and the websafe version is hex `CCCCCC`. A complement of this color would be $71.0958, -8.7857, -0.8997$, and the grayscale version is $68.9575, -3.6794, 3.7466$.

A 20% lighter version of the original color is $92.5482, 1.0718, 10.4893$, and $46.8536, 2.6791, 6.4320$ is the 20% darker color. If you saturate the color by 10%, you get $63.5568, 6.8187, 11.4905$, and if you desaturate by 10%, it is $73.5159, -2.6303, 5.1279$.

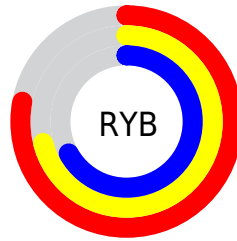
Distribution



Red (78%)

Green (70%)

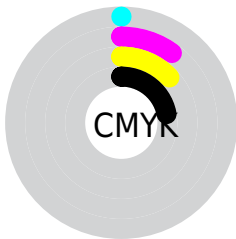
Blue (67%)



Red (78%)

Yellow (71%)

Blue (67%)

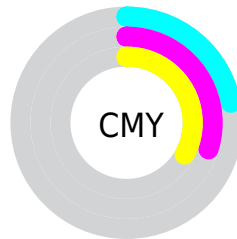


Cyan (0%)

Magenta (10%)

Yellow (13%)

Black (22%)



Cyan (22%)

Magenta (30%)

Yellow (33%)

Brightness & Saturation Gradients

These gradients show how the HunterLab color 68.4289, 1.9525, 8.3825 changes by changing the brightness by 10 percent. The first figure shows a shift by +10% for each color and the second figure -10%.

Similar to the brightness gradients but the following saturation gradients show a change of the HunterLab color 68.4289, 1.9525, 8.3825 by changing the saturation by 10% instead.

■ 68.4289, 1.9525,
8.3825

■ 68.4289, 1.9525,
8.3825

193.4230, -2.4676,
17.2378

■ 57.3577, 2.2320,
7.4945

■ 92.4422, 1.2414,
10.2165

■ 46.9565, 2.4584,
6.6220

105.3208, 0.8212,
11.1615

■ 37.2733, 2.6231,
5.7639

118.7475, 0.3610,
12.1259

■ 28.3660, 2.7173,
4.9163

132.7007, -0.1368,
13.1097

■ 20.3091, 2.7283,
4.0721

147.1612, -0.6702,
14.1129

■ 13.2042, 2.6368,
3.2175

162.1120, -1.2375,

■ 6.7200, 3.6295,

15.1354

3.8593

177.5373, -1.8370,
16.1771

0.0000, NaN, NaN

0.0000, NaN, NaN

■ 68.4289, 1.9525,
8.3825

■ 68.4289, 1.9525,
8.3825

■ 63.5568, 6.8187,
11.4905

■ 73.5159, -2.6303,
5.1279

■ 58.9248, 11.9960,
14.4090

■ 78.7884, -6.9511,
1.7528

■ 54.5700, 17.4903,
17.0855

■ 84.2273, -11.0408,
-1.7203

■ 50.5340, 23.2842,
19.4502

■ 89.8154, -14.9271,
-5.2757

■ 46.8648, 29.3172,

■ 94.9746, -21.8133,

21.4163

-0.9200

■ 43.6147, 35.4650,
22.8843

■ 95.2606, -22.2377,
-0.5738

■ 40.8369, 41.5197,
23.7584

■ 38.5777, 47.1858,
23.9805

■ 37.3337, 50.6340,
23.8913

Harmonies

Analogous

The Analogous color harmony consists of three colors that are next to each other on the color wheel.



68.4304, 3.8185, 5.2675



68.4289, 1.9525, 8.3825



68.4304, -1.4024, 10.1906

Triad

The Triadic color harmony groups three colors that are evenly spaced from another and form a triangle on the color wheel.



68.4304, 1.9505, 8.3836



68.4304, -10.6673, 5.8199



68.4304, -2.0063, -3.6092

Complementary

The Complementary color scheme is a pair of colors which are on the opposite of each other on the color wheel.



68.4289, 1.9525, 8.3825



71.0958, -8.7857, -0.8997

Split Complementary

Split-complementary colors differ from the complementary color scheme. The scheme consists of three colors, the original color and two neighbors of the complement color.



68.4304, -5.8788, -3.4407



68.4289, 1.9525, 8.3825



68.4304, -10.8208, 2.1454

Square

The Square scheme is like the rectangle color scheme, but the four colors are evenly spaced on the color wheel.



68.4304, 1.9505, 8.3836



68.4304, -8.6616, 8.7684



68.4304, -9.0856, -1.2863



68.4304, 1.4999, -1.7345

Rectangle

The Rectangle color scheme consists of four colors that form a rectangle on the color wheel.



68.4289, 1.9525, 8.3825



68.4304, -3.9998, 10.4757



68.4304, -9.0856, -1.2863



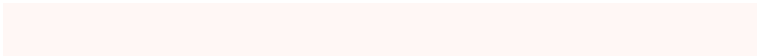
68.4304, -3.3094, -3.7925

Sweetspot

The Sweet Spot groups the original color and five complimentary colors.



68.4304, 1.9505, 8.3836



97.1889, -2.9489, 7.2335



67.3302, 8.3570, -2.4675



44.7216, -1.1537, 3.5019

0.0000, NaN, NaN



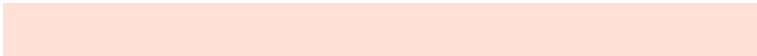
46.2646, -2.4686, 2.5136

Same Dimension

The Same Dimension uses a secret algorithm to generate beautiful new colors.



68.4304, 1.9505, 8.3836



89.0130, 4.5673, 12.4650



72.1711, -4.3997, 12.3302



33.2081, 0.0955, 3.3909



30.2883, 40.2777, 19.3686



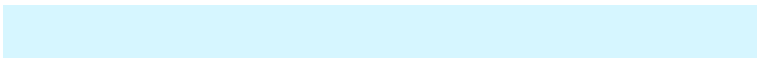
7.4070, 6.4757, 4.6776

Inverse Universe

The Inverse Universe completely reimagines the original color for something new.



71.0958, -8.7857, -0.8997



93.3820, -13.0446, -2.7551



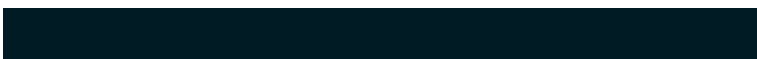
67.2577, -2.5168, -5.6975



34.1119, -3.5425, 0.2437



41.7728, -13.1597, -23.8044



9.6463, -3.6253, -4.2311

Previews

White Background



This preview shows how the HunterLab color 68.4289, 1.9525, 8.3825 looks on a white background.

Color Contrast Check

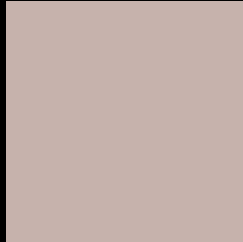
Large Text (above 18pt) WCAG AA × Fail

Any Text WCAG AA × Fail

Large Text (above 18pt) WCAG AAA × Fail

Any Text WCAG AAA × Fail

Black Background



This preview shows how the HunterLab color 68.4289, 1.9525, 8.3825 looks on a black background.

Color Contrast Check

Large Text (above 18pt) WCAG AA ✓ Pass

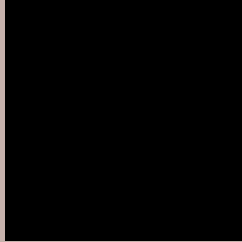
Any Text WCAG AA ✓ Pass

Large Text (above 18pt) WCAG AAA ✓ Pass

Any Text WCAG AAA ✓ Pass

If you want to check with other color combinations, try the [Color Contrast Checker](#).

HunterLab 68.4289, 1.9525, 8.3825 Background



This preview shows how black text looks on a background with the HunterLab color 68.4289, 1.9525, 8.3825.



This preview shows how white text looks on a background with the HunterLab color 68.4289, 1.9525,

Color Blindness Simulation

Color vision deficiency is a very complex topic, and I could not describe the different causes any better than Wikipedia does, so if you want to learn more, you should check out their [article about color blindness](#).

Dichromacy



Original Color

68.4289, 1.9525, 8.3825

Protanopia

68.3144, -2.8640, 7.2903

Deuteranopia

68.3562, 4.6763, 8.3495



Tritanopia

68.2740, 6.8898, 0.3818

Trichromacy



Original Color

68.4289, 1.9525, 8.3825

Protanomaly

68.3637, -1.2263, 7.8162

Deuteranomaly

68.4400, 3.4793, 8.4216

Tritanomaly

68.2727, 5.0409, 3.2522

Monochromacy



Original Color

68.4289, 1.9525, 8.3825

Achromatopsia

68.8136, -3.6717, 3.7388

Achromatomaly

68.5520, -1.7517, 5.3251

CSS Examples

Text

The CSS property to change the color of the text to HunterLab 68.4289, 1.9525, 8.3825 is called "color". The color property can be set on classes, ids or directly on the HTML element.

This example shows how text in the color `rgb(198, 178, 172)` looks like.

```
.text, #text, p{  
    color:rgb(198, 178, 172)  
}
```

If you want to add a text shadow in that color use the text-shadow property, you can generate a text shadow directly with our [CSS Text Shadow Generator](#).

Here you see how black text with a 4 pixel rgb(198, 178, 172) colored shadow looks like.

```
.shadow{ text-shadow: 4px 4px 2px rgb(198, 178, 172) }
```

Border

The CSS property to change the border of an element to HunterLab 68.4289, 1.9525, 8.3825 is called "border". The border property can be set on classes, ids or directly on the HTML element.

This example shows the color as border, it can be applied via the CSS property "border" or "border-color".

```
.border, #border, table{ border:4px solid rgb(198, 178, 172) }
```


If only the border color should be changed use the property border-color.

```
.border{ border-color:rgb(198, 178, 172) }
```

If you want to add a box shadow in that color use:

Here you see how a box with a 4 pixel rgb(198, 178, 172) colored shadow looks like.

```
.boxshadow{ -moz-box-shadow:4px 4px 4px  
4px rgb(198, 178, 172); -webkit-box-  
shadow:4px 4px 4px 4px rgb(198, 178, 172);  
box-shadow:4px 4px 4px 4px rgb(198, 178,  
172) }
```

Background

The CSS property to change the background color of an element to HunterLab 68.4289, 1.9525, 8.3825 is called "background". The background property can be set on classes, ids or directly on the HTML element.

```
.background, #background, body{  
background: rgb(198, 178, 172) }
```

If only the background color should be changed can be used:

```
.background{ background-color: rgb(198,  
178, 172) }
```

This example shows the color as background, it is applied via the CSS property "background".

To optimize and compress your CSS code, you can use our [online CSS compressor and optimizer](#) based on csstidy. If you want to create a linear or radial gradient as background or border, check our [CSS Gradient Generator](#).

Hey! You found this booklet interesting? Support Converting Colors with the new Membership Option!

The pro membership hides all ads, plus gives you double the colors in the color bucket, and more awesome pro features!

[Learn more, Memberships starting at \\$2.50/m!](#)

**Follow me
on Twitter!**

@ConvertingColor