

Converting Colors

HunterLab(68.4730, 8.1305,
19.9157)

Have a look what the booklet for
HunterLab(68.4730, 8.1305,
19.9157) contains.

HunterLab(68.5058, 8.0898, 19.8638)	3
<i>Conversions</i>	4
<i>Details</i>	6
<i>Harmonies</i>	12
<i>Previews</i>	24
<i>Color Blindness Simulation</i>	28
<i>CSS Examples</i>	31

Color

**HunterLab(68.5058, 8.0898,
19.8638)**

Conversions

Conversions Part 1

Format	Color
Hex	DBAD8F
RGB	219, 173, 143
RGB Percent	86%, 68%, 56%
CMY	0.1412, 0.3215, 0.4392
CMYK	0.00, 0.21, 0.35, 0.14
HSL	24°, 51%, 71%
HSV	24°, 35%, 86%
XYZ	49.1150, 46.9304, 32.4565
YIQ	183.3340, 37.0460, 0.4220

Conversions

Conversions Part 2

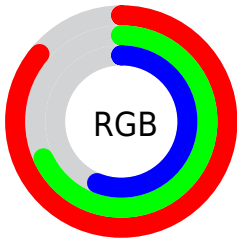
Format	Color
R_{YB}	219, 193, 143
Decimal	14396815
CIE Lab	74.15, 12.67, 21.82
CIE LCh	74, 25.235, 59.858
Yxy	46.9326, 0.3822, 0.3652
Android (android.graphics.Color)	4292586895 (0xFFDBAD8F)
YUV	183.3340, -19.8847, 31.2791
Hunter-Lab	68.5058, 8.0898, 19.8638

Details

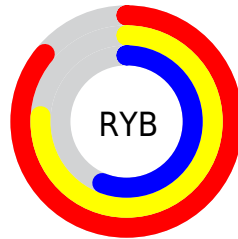
The HunterLab color **68.5058, 8.0898, 19.8638** is a light color, and the websafe version is hex **CC9966**. A complement of this color would be **68.8097, -10.6578, -15.5325**, and the grayscale version is **69.0247, -3.6830, 3.7502**.

A 20% lighter version of the original color is **89.8766, -0.2635, 20.5303**, and **47.1529, 7.8564, 16.4615** is the 20% darker color. If you saturate the color by 10%, you get **64.4195, 12.5071, 23.2351**, and if you desaturate by 10%, it is **72.8014, 4.0419, 15.9781**.

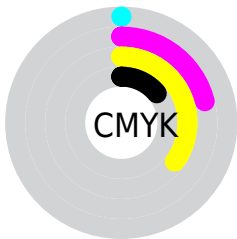
Distribution



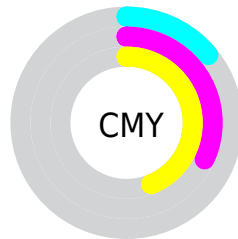
- Red (86%)
- Green (68%)
- Blue (56%)



- Red (86%)
- Yellow (76%)
- Blue (56%)



- Cyan (0%)
- Magenta (21%)
- Yellow (35%)
- Black (14%)



- Cyan (14%)
- Magenta (32%)
- Yellow (44%)

Brightness & Saturation Gradients

These gradients show how the HunterLab color 68.5058, 8.0898, 19.8638 changes by changing the brightness by 10 percent. The first figure shows a shift by +10% for each color and the second figure -10%.


Similar to the brightness gradients but the following saturation gradients show a change of the HunterLab color 68.5058, 8.0898, 19.8638 by changing the saturation by 10% instead.

 68.5058, 8.0898,
19.8638

 68.5058, 8.0898,
19.8638

193.5318, 6.0019,
35.0621

 57.4303, 8.0528,
18.0634

 92.5273, 7.9661,
23.3529

 47.0244, 7.9455,
16.2058

 105.4097, 7.8216,
25.0581

 37.3362, 7.7556,
14.2714


118.8400, 7.6268,
26.7461

 28.4234, 7.4700,
12.2295

132.7967, 7.3851,
28.4215

 20.3604, 7.0704,
10.0326

147.2606, 7.0994,
30.0880

 13.2487, 6.5304,
8.4706

162.2146, 6.7722,

 6.7754, 7.7877,

31.7488

4.7428

177.6430, 6.4058,
33.4061

0.0000, NaN, NaN

0.0000, NaN, NaN

■ 68.5058, 8.0898,
19.8638

■ 68.5058, 8.0898,
19.8638

■ 64.4195, 12.5071,
23.2351

■ 72.8014, 4.0419,
15.9781

■ 60.5610, 17.3127,
26.0144

■ 77.2807, 0.3503,
11.6424

■ 56.9580, 22.4972,
28.1242

■ 81.9271, -3.0139,
6.9160

■ 53.6380, 28.0266,
29.4908

■ 86.7246, -6.0791,
1.8488

■ 50.6292, 33.8276,

■ 91.6595, -8.8730,

30.0613

-3.5172

■ 47.9576, 39.7735,
29.8331

■ 96.0385, -15.2129,
0.5054

■ 46.6792, 42.8894,
29.5144

■ 96.8505, -16.4721,
1.4734

Harmonies

Analogous

The Analogous color harmony consists of three colors that are next to each other on the color wheel.



68.5074, 17.1073, 13.6100



68.5058, 8.0898, 19.8638



68.5074, -3.6028, 21.9625

Triad

The Triadic color harmony groups three colors that are evenly spaced from another and form a triangle on the color wheel.



68.5074, 8.0871, 19.8648



68.5074, -24.8654, 3.7825



68.5074, 7.9833, -17.7076

Complementary

The Complementary color scheme is a pair of colors which are on the opposite of each other on the color wheel.



68.5058, 8.0898, 19.8638



68.8097, -10.6578, -15.5325

Split Complementary

Split-complementary colors differ from the complementary color scheme. The scheme consists of three colors, the original color and two neighbors of the complement color.



68.5074, -3.7153, -21.4995



68.5058, 8.0898, 19.8638



68.5074, -22.2131, -7.8857

Square

The Square scheme is like the rectangle color scheme, but the four colors are evenly spaced on the color wheel.



68.5074, 8.0871, 19.8648



68.5074, -22.1630, 13.6883



68.5074, -14.6636, -17.6379



68.5074, 17.0445, -7.9941

Rectangle

The Rectangle color scheme consists of four colors that form a rectangle on the color wheel.



68.5058, 8.0898, 19.8638



68.5074, -11.1828, 21.0535



68.5074, -14.6636, -17.6379



68.5074, 4.2041, -19.7833

Sweetspot

The Sweet Spot groups the original color and five complimentary colors.



68.5074, 8.0871, 19.8648



94.3456, -1.4755, 11.2940



61.9818, 30.6760, -7.7970



43.2879, -0.4179, 5.5904

0.0000, NaN, NaN



46.2646, -2.4686, 2.5136

Same Dimension

The Same Dimension uses a secret algorithm to generate beautiful new colors.



68.5074, 8.0871, 19.8648



77.6538, 13.5891, 26.7280



79.5001, -10.5801, 29.4214



37.2702, -0.6832, 4.3006



36.2212, 32.3014, 22.8848



10.0751, 6.1180, 6.3153

Inverse Universe

The Inverse Universe completely reimagines the original color for something new.



68.8097, -10.6578, -15.5325



78.0724, -13.2378, -23.9713



57.7650, 8.0570, -33.0517



37.3119, -3.1469, -0.3464



36.2271, -1.1795, -42.7344



10.0823, -1.6888, -8.9562

Previews

White Background



This preview shows how the HunterLab color 68.5058, 8.0898, 19.8638 looks on a white background.

Color Contrast Check

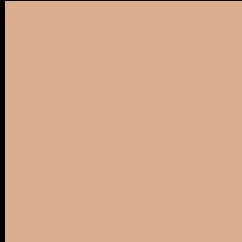
Large Text (above 18pt) WCAG AA × Fail

Any Text WCAG AA × Fail

Large Text (above 18pt) WCAG AAA × Fail

Any Text WCAG AAA × Fail

Black Background



This preview shows how the HunterLab color 68.5058, 8.0898, 19.8638 looks on a black background.

Color Contrast Check

Large Text (above 18pt) WCAG AA ✓ Pass

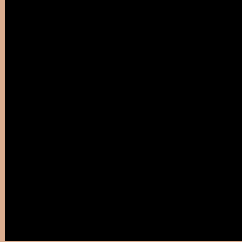
Any Text WCAG AA ✓ Pass

Large Text (above 18pt) WCAG AAA ✓ Pass

Any Text WCAG AAA ✓ Pass

If you want to check with other color combinations, try the [Color Contrast Checker](#).

HunterLab 68.5058, 8.0898, 19.8638 Background



This preview shows how black text looks on a background with the HunterLab color 68.5058, 8.0898, 19.8638.



This preview shows how white text looks on a background with the HunterLab color 68.5058, 8.0898,

19.8638.

Color Blindness Simulation

Color vision deficiency is a very complex topic, and I could not describe the different causes any better than Wikipedia does, so if you want to learn more, you should check out their [article about color blindness](#).

Dichromacy



Original Color

68.5058, 8.0898, 19.8638

Protanopia

68.5797, -4.8597, 18.3089

Deuteranopia

68.5122, 5.2122, 19.8195



Tritanopia

68.5780, 17.3540, 4.7660

Trichromacy



Original Color

68.5058, 8.0898, 19.8638

Protanomaly

68.5653, -0.3989, 18.7273

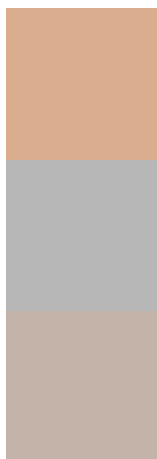
Deuteranomaly

68.4501, 6.4604, 19.7827

Tritanomaly

68.6069, 13.8618, 10.9235

Monochromacy



Original Color

68.5058, 8.0898, 19.8638

Achromatopsia

68.8136, -3.6717, 3.7388

Achromatomaly

68.4128, 0.1762, 10.0530

CSS Examples

Text

The CSS property to change the color of the text to HunterLab 68.5058, 8.0898, 19.8638 is called "color". The color property can be set on classes, ids or directly on the HTML element.

This example shows how text in the color `rgb(219, 173, 143)` looks like.

```
.text, #text, p{  
    color:rgb(219, 173, 143)  
}
```

If you want to add a text shadow in that color use the text-shadow property, you can generate a text shadow directly with our [CSS Text Shadow Generator](#).

Here you see how black text with a 4 pixel rgb(219, 173, 143) colored shadow looks like.

```
.shadow{ text-shadow: 4px 4px 2px rgb(219, 173, 143) }
```

Border

The CSS property to change the border of an element to HunterLab 68.5058, 8.0898, 19.8638 is called "border". The border property can be set on classes, ids or directly on the HTML element.

This example shows the color as border, it can be applied via the CSS property "border" or "border-color".

```
.border, #border, table{ border:4px solid rgb(219, 173, 143) }
```


If only the border color should be changed use the property `border-color`.

```
.border{ border-color:rgb(219, 173, 143) }
```

If you want to add a box shadow in that color use:

Here you see how a box with a 4 pixel `rgb(219, 173, 143)` colored shadow looks like.

```
.boxshadow{ -moz-box-shadow:4px 4px 4px  
4px rgb(219, 173, 143); -webkit-box-  
shadow:4px 4px 4px 4px rgb(219, 173, 143);  
box-shadow:4px 4px 4px 4px rgb(219, 173,  
143) }
```

Background

The CSS property to change the background color of an element to HunterLab 68.5058, 8.0898, 19.8638 is called "background". The background property can be set on classes, ids or directly on the HTML element.

```
.background, #background, body{  
background: rgb(219, 173, 143) }
```

If only the background color should be changed can be used:

```
.background{ background-color: rgb(219,  
173, 143) }
```

This example shows the color as background, it is applied via the CSS property "background".

To optimize and compress your CSS code, you can use our [online CSS compressor and optimizer](#) based on csstidy. If you want to create a linear or radial gradient as background or border, check our [CSS Gradient Generator](#).

Hey! You found this booklet interesting? Support Converting Colors with the new Membership Option!

The pro membership hides all ads, plus gives you double the colors in the color bucket, and more awesome pro features!

[Learn more, Memberships starting at \\$2.50/m!](#)

**Follow me
on Twitter!**

@ConvertingColor