

Converting Colors

HunterLab(68.5026, 3.2024,
12.2766)

Have a look what the booklet for
HunterLab(68.5026, 3.2024,
12.2766) contains.

HunterLab(68.5026, 3.2024, 12.2766)	3
<i>Conversions</i>	4
<i>Details</i>	6
<i>Harmonies</i>	12
<i>Previews</i>	24
<i>Color Blindness Simulation</i>	28
<i>CSS Examples</i>	31

Color

**HunterLab(68.5026, 3.2024,
12.2766)**

Conversions

Conversions Part 1

Format	Color
Hex	CCB1A3
RGB	204, 177, 163
RGB Percent	80%, 69%, 64%
CMY	0.2000, 0.3059, 0.3608
CMYK	0.00, 0.13, 0.20, 0.20
HSL	20°, 29%, 72%
HSV	20°, 20%, 80%
XYZ	47.2349, 46.9261, 41.2185
YIQ	183.4770, 20.5860, 1.3700

Conversions

Conversions Part 2

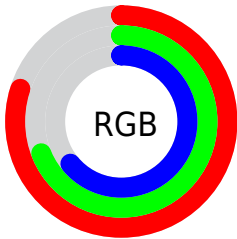
Format	Color
RYB	204, 184, 163
Decimal	13414819
CIELab	74.14, 7.50, 10.74
CIELCh	74, 13.098, 55.079
Yxy	46.9282, 0.3489, 0.3466
Android (android.graphics.Color)	4291604899 (0xFFCCB1A3)
YUV	183.4770, -10.0952, 17.9987
Hunter-Lab	68.5026, 3.2024, 12.2766

Details

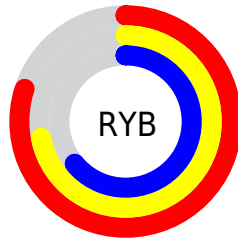
The HunterLab color $68.5026, 3.2024, 12.2766$ is a light color, and the websafe version is hex $CC9999$. A complement of this color would be $69.9800, -9.1704, -5.4397$, and the grayscale version is $69.0498, -3.6843, 3.7516$.

A 20% lighter version of the original color is $91.9781, 0.1802, 13.9229$, and $46.8536, 3.6162, 9.9035$ is the 20% darker color. If you saturate the color by 10%, you get $64.1926, 7.3134, 15.8272$, and if you desaturate by 10%, it is $72.9999, -0.6001, 8.4073$.

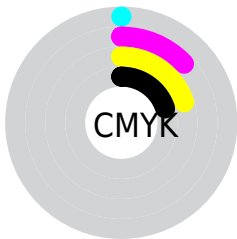
Distribution



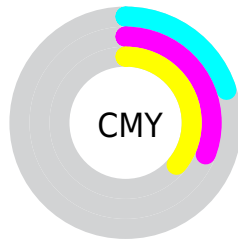
- Red (80%)
- Green (69%)
- Blue (64%)



- Red (80%)
- Yellow (72%)
- Blue (64%)



- Cyan (0%)
- Magenta (13%)
- Yellow (20%)
- Black (20%)



- Cyan (20%)
- Magenta (31%)
- Yellow (36%)

Brightness & Saturation Gradients

These gradients show how the HunterLab color 68.5026, 3.2024, 12.2766 changes by changing the brightness by 10 percent. The first figure shows a shift by +10% for each color and the second figure -10%.

Similar to the brightness gradients but the following saturation gradients show a change of the HunterLab color 68.5026, 3.2024, 12.2766 by changing the saturation by 10% instead.

■ 68.5026, 3.2024,
12.2766

■ 68.5026, 3.2024,
12.2766

193.5272, -0.7327,
23.0511

■ 57.4272, 3.4157,
11.1157

■ 92.5237, 2.6138,
14.6078

■ 47.0216, 3.5722,
9.9496

■ 105.4059, 2.2509,
15.7821

■ 37.3336, 3.6624,
8.7717

118.8361, 1.8459,
16.9652

■ 28.4210, 3.6764,
7.5704

132.7926, 1.4014,
18.1586

■ 20.3583, 3.6001,
6.3258

147.2564, 0.9194,
19.3631

■ 13.2468, 3.4122,
5.0026

162.2102, 0.4020,

■ 6.7731, 4.4621,

20.5797

4.7412

177.6386, -0.1492,
21.8089

0.0000, NaN, NaN

0.0000, NaN, NaN

■ 68.5026, 3.2024,
12.2766

■ 68.5026, 3.2024,
12.2766

■ 64.1926, 7.3134,
15.8272

■ 72.9999, -0.6001,
8.4073

■ 60.0876, 11.7606,
18.9990

■ 77.6604, -4.1133,
4.2636

■ 56.2151, 16.5529,
21.7257

■ 82.4692, -7.3666,
-0.1150

■ 52.6043, 21.6832,
23.9310

■ 87.4122, -10.3866,
-4.6970

■ 49.2875, 27.1157,

■ 92.1190, -15.1962,

25.5344

-4.3946

■ 46.2989, 32.7721,
26.4629

■ 95.6961, -20.6483,
-0.0097

■ 43.6716, 38.5177,
26.6732

■ 41.4459, 44.0644,
26.3102

Harmonies

Analogous

The Analogous color harmony consists of three colors that are next to each other on the color wheel.



68.5041, 7.3151, 8.3008



68.5026, 3.2024, 12.2766



68.5041, -2.6476, 13.9594

Triad

The Triadic color harmony groups three colors that are evenly spaced from another and form a triangle on the color wheel.



68.5041, 3.2002, 12.2776



68.5041, -14.9803, 4.6812



68.5041, 1.3946, -7.1907

Complementary

The Complementary color scheme is a pair of colors which are on the opposite of each other on the color wheel.



68.5026, 3.2024, 12.2766



69.9800, -9.1704, -5.4397

Split Complementary

Split-complementary colors differ from the complementary color scheme. The scheme consists of three colors, the original color and two neighbors of the complement color.



68.5041, -4.6643, -8.3724



68.5026, 3.2024, 12.2766



68.5041, -13.9828, -1.1816

Square

The Square scheme is like the rectangle color scheme, but the four colors are evenly spaced on the color wheel.



68.5041, 3.2002, 12.2776



68.5041, -13.0322, 9.8256



68.5041, -10.2583, -6.0869



68.5041, 6.2472, -2.9854

Rectangle

The Rectangle color scheme consists of four colors that form a rectangle on the color wheel.



68.5026, 3.2024, 12.2766



68.5041, -6.6898, 13.6702



68.5041, -10.2583, -6.0869



68.5041, -0.5743, -7.9694

Sweetspot

The Sweet Spot groups the original color and five complimentary colors.



68.5041, 3.2002, 12.2776



96.3293, -2.6319, 8.7153



65.3948, 14.7510, -3.7872



44.3835, -1.0778, 4.1941

0.0000, NaN, NaN



46.2646, -2.4686, 2.5136

Same Dimension

The Same Dimension uses a secret algorithm to generate beautiful new colors.



68.5041, 3.2002, 12.2776



85.7881, 6.2987, 17.7797



74.4919, -6.9134, 18.2009



34.3943, -0.4014, 3.8113



33.1182, 34.3033, 21.0078



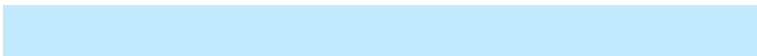
8.4044, 5.5399, 5.2757

Inverse Universe

The Inverse Universe completely reimagines the original color for something new.



69.9800, -9.1704, -5.4397



88.0702, -12.8611, -9.6479



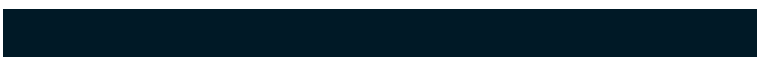
63.9014, 0.8779, -13.6135



34.7226, -3.1467, -0.1235



37.0277, -5.2951, -34.8509



9.1912, -2.3830, -6.3439

Previews

White Background



This preview shows how the HunterLab color 68.5026, 3.2024, 12.2766 looks on a white background.

Color Contrast Check

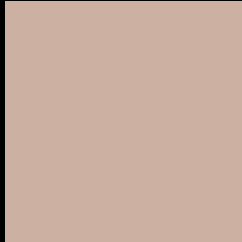
Large Text (above 18pt) WCAG AA × Fail

Any Text WCAG AA × Fail

Large Text (above 18pt) WCAG AAA × Fail

Any Text WCAG AAA × Fail

Black Background



This preview shows how the HunterLab color 68.5026, 3.2024, 12.2766 looks on a black background.

Color Contrast Check

Large Text (above 18pt) WCAG AA ✓ Pass

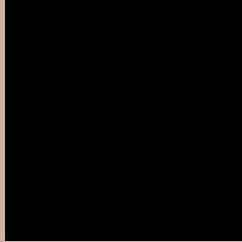
Any Text WCAG AA ✓ Pass

Large Text (above 18pt) WCAG AAA ✓ Pass

Any Text WCAG AAA ✓ Pass

If you want to check with other color combinations, try the [Color Contrast Checker](#).

HunterLab 68.5026, 3.2024, 12.2766 Background



This preview shows how black text looks on a background with the HunterLab color 68.5026, 3.2024, 12.2766.



This preview shows how white text looks on a background with the HunterLab color 68.5026, 3.2024,

Color Blindness Simulation

Color vision deficiency is a very complex topic, and I could not describe the different causes any better than Wikipedia does, so if you want to learn more, you should check out their [article about color blindness](#).

Dichromacy



Original Color

68.5026, 3.2024, 12.2766

Protanopia

68.6704, -3.6014, 11.1030

Deuteranopia

68.5277, 4.7634, 12.3304



Tritanopia

68.3669, 9.9774, 1.5303

Trichromacy



Original Color

68.5026, 3.2024, 12.2766

Protanomaly

68.5283, -1.0991, 11.4091

Deuteranomaly

68.4228, 4.4113, 12.2137

Tritanomaly

68.2702, 7.6638, 5.6229

Monochromacy



Original Color

68.5026, 3.2024, 12.2766

Achromatopsia

68.8136, -3.6717, 3.7388

Achromatomaly

68.7450, -1.2616, 6.9132

CSS Examples

Text

The CSS property to change the color of the text to HunterLab 68.5026, 3.2024, 12.2766 is called "color". The color property can be set on classes, ids or directly on the HTML element.

This example shows how text in the color `rgb(204, 177, 163)` looks like.

```
.text, #text, p{  
    color:rgb(204, 177, 163)  
}
```

If you want to add a text shadow in that color use the text-shadow property, you can generate a text shadow directly with our [CSS Text Shadow Generator](#).

Here you see how black text with a 4 pixel rgb(204, 177, 163) colored shadow looks like.

```
.shadow{ text-shadow: 4px 4px 2px rgb(204, 177, 163) }
```

Border

The CSS property to change the border of an element to HunterLab 68.5026, 3.2024, 12.2766 is called "border". The border property can be set on classes, ids or directly on the HTML element.

This example shows the color as border, it can be applied via the CSS property "border" or "border-color".

```
.border, #border, table{ border:4px solid rgb(204, 177, 163) }
```


If only the border color should be changed use the property border-color.

```
.border{ border-color:rgb(204, 177, 163) }
```

If you want to add a box shadow in that color use:

Here you see how a box with a 4 pixel rgb(204, 177, 163) colored shadow looks like.

```
.boxshadow{ -moz-box-shadow:4px 4px 4px  
4px rgb(204, 177, 163); -webkit-box-  
shadow:4px 4px 4px 4px rgb(204, 177, 163);  
box-shadow:4px 4px 4px 4px rgb(204, 177,  
163) }
```

Background

The CSS property to change the background color of an element to HunterLab 68.5026, 3.2024, 12.2766 is called "background". The background property can be set on classes, ids or directly on the HTML element.

```
.background, #background, body{  
background: rgb(204, 177, 163) }
```

If only the background color should be changed can be used:

```
.background{ background-color: rgb(204,  
177, 163) }
```

This example shows the color as background, it is applied via the CSS property "background".

To optimize and compress your CSS code, you can use our [online CSS compressor and optimizer](#) based on csstidy. If you want to create a linear or radial gradient as background or border, check our [CSS Gradient Generator](#).

Hey! You found this booklet interesting? Support Converting Colors with the new Membership Option!

The pro membership hides all ads, plus gives you double the colors in the color bucket, and more awesome pro features!

[Learn more, Memberships starting at \\$2.50/m!](#)

**Follow me
on Twitter!**

@ConvertingColor