

# Converting Colors

HunterLab(68.5698, 8.8318,  
4.6072)

Have a look what the booklet for  
HunterLab(68.5698, 8.8318, 4.6072)  
contains.

<b>HunterLab(68.5698, 8.8318, 4.6072)</b> .....	3
<b><i>Conversions</i></b> .....	4
<b><i>Details</i></b> .....	6
<b><i>Harmonies</i></b> .....	12
<b><i>Previews</i></b> .....	24
<b><i>Color Blindness Simulation</i></b> .....	28
<b><i>CSS Examples</i></b> .....	31

# Color

**HunterLab(68.5698, 8.8318,  
4.6072)**

# Conversions

## Conversions Part 1

Format	Color
Hex	D0AEB5
RGB	208, 174, 181
RGB Percent	82%, 68%, 71%
CMY	0.1843, 0.3176, 0.2902
CMYK	0.00, 0.16, 0.13, 0.18
HSL	348°, 27%, 75%
HSV	348°, 16%, 82%
XYZ	49.4889, 47.0182, 50.1831
YIQ	184.9640, 18.0170, 9.3850

# Conversions

## Conversions Part 2

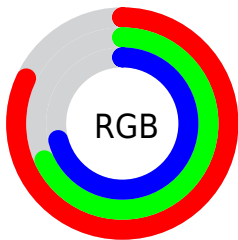
<b>Format</b>	<b>Color</b>
R <sub>Y</sub> B	208, 174, 181
Decimal	13676213
CIE Lab	74.20, 13.45, 1.03
CIE LCh	74, 13.486, 4.391
Yxy	47.0203, 0.3374, 0.3205
Android (android.graphics.Color)	4291866293 (0xFFD0AEB5)
YUV	184.9640, -1.9543, 20.2026
Hunter-Lab	68.5698, 8.8318, 4.6072

# Details

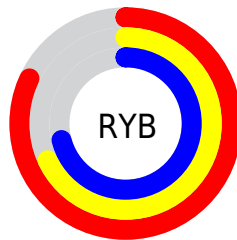
The HunterLab color  $68.5698, 8.8318, 4.6072$  is a light color, and the websafe version is hex  $CC9999$ . A complement of this color would be  $76.3732, -15.4934, 3.8893$ , and the grayscale version is  $69.6415, -3.7159, 3.7838$ .

A 20% lighter version of the original color is  $91.6341, 4.8724, 4.7093$ , and  $47.1698, 8.2461, 3.5407$  is the 20% darker color. If you saturate the color by 10%, you get  $62.4158, 17.1258, 5.1801$ , and if you desaturate by 10%, it is  $75.1053, 0.7603, 4.3454$ .

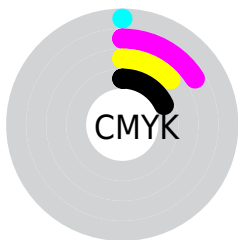
# Distribution



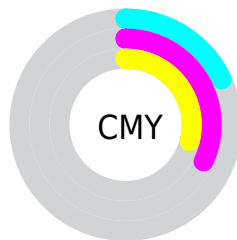
- Red (82%)
- Green (68%)
- Blue (71%)



- Red (82%)
- Yellow (68%)
- Blue (71%)



- Cyan (0%)
- Magenta (16%)
- Yellow (13%)
- Black (18%)



- Cyan (18%)
- Magenta (32%)
- Yellow (29%)

# Brightness & Saturation Gradients

These gradients show how the HunterLab color 68.5698, 8.8318, 4.6072 changes by changing the brightness by 10 percent. The first figure shows a shift by +10% for each color and the second figure -10%.

Similar to the brightness gradients but the following saturation gradients show a change of the HunterLab color 68.5698, 8.8318, 4.6072 by changing the saturation by 10% instead.



■ 68.5698, 8.8318,  
4.6072

■ 68.5698, 8.8318,  
4.6072

193.6222, 7.0153,  
11.7815

■ 57.4906, 8.7590,  
3.9546

■ 92.5980, 8.7765,  
6.0096

■ 47.0808, 8.6136,  
3.3340

105.4835, 8.6640,  
6.7545

■ 37.3884, 8.3834,  
2.7483

118.9168, 8.4999,  
7.5274

■ 28.4711, 8.0549,  
2.1997

132.8764, 8.2880,  
8.3274

■ 20.4031, 7.6096,  
1.6905

147.3431, 8.0311,  
9.1535

■ 13.2856, 7.0208,  
1.2233

162.2998, 7.7319,

■ 6.8211, 8.2254,

10.0051

0.9988

177.7309, 7.3927,  
10.8813

0.0000, NaN, NaN

0.0000, NaN, NaN

■ 68.5698, 8.8318,  
4.6072

■ 68.5698, 8.8318,  
4.6072

■ 62.4158, 17.1258,  
5.1801

■ 75.1053, 0.7603,  
4.3454

■ 56.7093, 25.5975,  
6.1166

■ 81.9614, -7.0766,  
4.3401

■ 51.5384, 34.1110,  
7.4711

■ 89.0950, -14.6979,  
4.5490

■ 47.0052, 42.4005,  
9.2772

■ 95.7342, -21.0318,  
4.0857

■ 43.2208, 50.0249,

■ 95.9948, -19.5626,

11.5193

0.3758

■ 40.2880, 56.3801,  
14.0985

■ 38.2697, 60.8394,  
16.8127

■ 37.1423, 63.0586,  
19.3797

■ 36.8551, 63.5849,  
20.1763

# Harmonies

## Analogous

The Analogous color harmony consists of three colors that are next to each other on the color wheel.



68.5713, 7.5988, -1.4337



68.5698, 8.8318, 4.6072



68.5713, 6.6156, 9.9236

# Triad

The Triadic color harmony groups three colors that are evenly spaced from another and form a triangle on the color wheel.



68.5713, 8.8297, 4.6084



68.5713, -10.3670, 12.5714



68.5713, -8.8167, -7.4850

# Complementary

The Complementary color scheme is a pair of colors which are on the opposite of each other on the color wheel.



68.5698, 8.8318, 4.6072



76.3732, -15.4934, 3.8893

# Split Complementary

Split-complementary colors differ from the complementary color scheme. The scheme consists of three colors, the original color and two neighbors of the complement color.



68.5713, -13.3687, -3.0957



68.5698, 8.8318, 4.6072



68.5713, -14.2409, 8.5256

# Square

The Square scheme is like the rectangle color scheme, but the four colors are evenly spaced on the color wheel.



68.5713, 8.8297, 4.6084



68.5713, -4.5869, 14.2502



68.5713, -15.3198, 2.8450



68.5713, -2.7331, -8.7705



# Rectangle

The Rectangle color scheme consists of four colors that form a rectangle on the color wheel.



68.5698, 8.8318, 4.6072



68.5713, 3.5292, 12.4503



68.5713, -15.3198, 2.8450



68.5713, -10.5694, -6.3053

# Sweetspot

The Sweet Spot groups the original color and five complimentary colors.



68.5713, 8.8297, 4.6084



95.6546, -0.3269, 5.4536



68.6987, 11.0218, -8.9774



43.9754, 0.1772, 2.5273

0.0000, NaN, NaN



46.2646, -2.4686, 2.5136



# Same Dimension

The Same Dimension uses a secret algorithm to generate beautiful new colors.



68.5713, 8.8297, 4.6084



83.2623, 15.1506, 6.0326



71.1313, 2.7950, 10.4994



34.4202, 1.5125, 2.0711



29.1153, 50.2702, 15.6401



6.9693, 12.1992, 2.4568



# Inverse Universe

The Inverse Universe completely reimagines the original color for something new.



68.5713, 8.8297, 4.6084



83.2623, 15.1506, 6.0326



73.5597, -9.5338, -2.9386



34.4202, 1.5125, 2.0711



29.1153, 50.2702, 15.6401



6.9693, 12.1992, 2.4568



# Previews

## White Background



This preview shows how the HunterLab color 68.5698, 8.8318, 4.6072 looks on a white background.

## Color Contrast Check

Large Text (above 18pt) WCAG AA × Fail

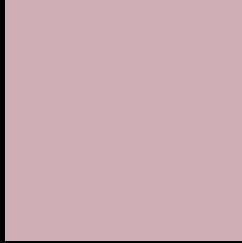
Any Text WCAG AA × Fail

Large Text (above 18pt) WCAG AAA × Fail

Any Text WCAG AAA × Fail



# Black Background



This preview shows how the HunterLab color 68.5698, 8.8318, 4.6072 looks on a black background.

## Color Contrast Check

Large Text (above 18pt) WCAG AA ✓ Pass

Any Text WCAG AA ✓ Pass

Large Text (above 18pt) WCAG AAA ✓ Pass

Any Text WCAG AAA ✓ Pass

If you want to check with other color combinations, try the [Color Contrast Checker](#).

## HunterLab 68.5698, 8.8318, 4.6072 Background



This preview shows how black text looks on a background with the HunterLab color 68.5698, 8.8318, 4.6072.



This preview shows how white text looks on a background with the HunterLab color 68.5698, 8.8318,

4.6072.

# Color Blindness Simulation

Color vision deficiency is a very complex topic, and I could not describe the different causes any better than Wikipedia does, so if you want to learn more, you should check out their [article about color blindness](#).

## Dichromacy



### Original Color

68.5698, 8.8318, 4.6072

### Protanopia

68.7553, -2.2160, 2.7478

### Deuteranopia

68.6710, 4.7187, 5.1161



## Tritanopia

68.5786, 10.6706, 1.7987

# Trichromacy



## Original Color

68.5698, 8.8318, 4.6072

## Protanomaly

68.5845, 1.6868, 3.0890

## Deuteranomaly

68.6901, 6.2555, 5.1651

## Tritanomaly

68.5166, 10.3434, 2.6826

# Monochromacy



## Original Color

68.5698, 8.8318, 4.6072

## Achromatopsia

69.6527, -3.7165, 3.7844

## Achromatomaly

69.1707, 0.6714, 3.7647

# CSS Examples

## Text

The CSS property to change the color of the text to HunterLab 68.5698, 8.8318, 4.6072 is called "color". The color property can be set on classes, ids or directly on the HTML element.

This example shows how text in the color `rgb(208, 174, 181)` looks like.

```
.text, #text, p{  
    color:rgb(208, 174, 181)  
}
```

If you want to add a text shadow in that color use the text-shadow property, you can generate a text shadow directly with our [CSS Text Shadow Generator](#).

Here you see how black text with a 4 pixel rgb(208, 174, 181) colored shadow looks like.

```
.shadow{ text-shadow: 4px 4px 2px rgb(208, 174, 181) }
```

## Border

The CSS property to change the border of an element to HunterLab 68.5698, 8.8318, 4.6072 is called "border".

The border property can be set on classes, ids or directly on the HTML element.

This example shows the color as border, it can be applied via the CSS property "border" or "border-color".

```
.border, #border, table{ border:4px solid rgb(208, 174, 181) }
```



If only the border color should be changed use the property `border-color`.

```
.border{ border-color:rgb(208, 174, 181) }
```

If you want to add a box shadow in that color use:

Here you see how a box with a 4 pixel `rgb(208, 174, 181)` colored shadow looks like.

```
.boxshadow{ -moz-box-shadow:4px 4px 4px  
4px rgb(208, 174, 181); -webkit-box-  
shadow:4px 4px 4px 4px rgb(208, 174, 181);  
box-shadow:4px 4px 4px 4px rgb(208, 174,  
181) }
```

# Background

The CSS property to change the background color of an element to HunterLab 68.5698, 8.8318, 4.6072 is called "background". The background property can be set on classes, ids or directly on the HTML element.

```
.background, #background, body{  
background: rgb(208, 174, 181) }
```

If only the background color should be changed can be used:

```
.background{ background-color: rgb(208,  
174, 181) }
```

This example shows the color as background, it is applied via the CSS property "background".

To optimize and compress your CSS code, you can use our [online CSS compressor and optimizer](#) based on csstidy. If you want to create a linear or radial gradient as background or border, check our [CSS Gradient Generator](#).

Hey! You found this booklet interesting? Support Converting Colors with the new Membership Option!

The pro membership hides all ads, plus gives you double the colors in the color bucket, and more awesome pro features!

**[Learn more, Memberships starting at \\$2.50/m!](#)**

**Follow me  
on Twitter!**

@ConvertingColor