

Converting Colors

HunterLab(68.6605, 3.1969,
5.0766)

Have a look what the booklet for
HunterLab(68.6605, 3.1969, 5.0766)
contains.

HunterLab(68.6599, 3.1973, 5.0766)	3
<i>Conversions</i>	4
<i>Details</i>	6
<i>Harmonies</i>	12
<i>Previews</i>	24
<i>Color Blindness Simulation</i>	28
<i>CSS Examples</i>	31

Color

**HunterLab(68.6599, 3.1973,
5.0766)**

Conversions

Conversions Part 1

Format	Color
Hex	C6B2B4
RGB	198, 178, 180
RGB Percent	78%, 70%, 71%
CMY	0.2235, 0.3019, 0.2941
CMYK	0.00, 0.10, 0.09, 0.22
HSL	354°, 15%, 74%
HSV	354°, 10%, 78%
XYZ	47.4473, 47.1418, 49.7785
YIQ	184.2080, 11.2780, 4.8620

Conversions

Conversions Part 2

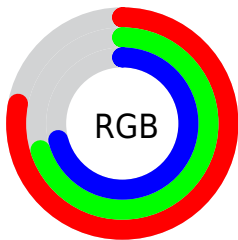
Format	Color
R_{YB}	198, 178, 180
Decimal	13021876
CIE Lab	74.28, 7.50, 1.59
CIE LCh	74, 7.662, 11.939
Yxy	47.1439, 0.3287, 0.3265
Android (android.graphics.Color)	4291211956 (0xFFC6B2B4)
YUV	184.2080, -2.0745, 12.0956
Hunter-Lab	68.6599, 3.1973, 5.0766

Details

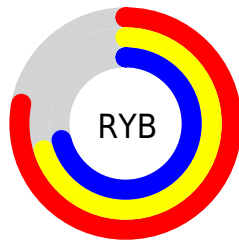
The HunterLab color $68.6599, 3.1973, 5.0766$ is a light color, and the websafe version is hex `CCCCCC`. A complement of this color would be $73.3757, -10.3739, 2.8308$, and the grayscale version is $69.3266, -3.6991, 3.7666$.

A 20% lighter version of the original color is $92.8234, 2.5592, 6.5537$, and $47.0413, 3.6847, 3.7443$ is the 20% darker color. If you saturate the color by 10%, you get $62.5655, 10.5883, 6.2664$, and if you desaturate by 10%, it is $75.0826, -3.9402, 4.0918$.

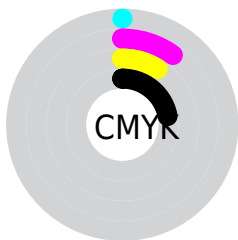
Distribution



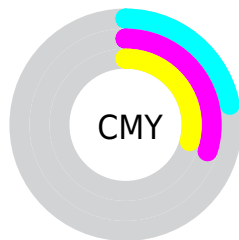
- Red (78%)
- Green (70%)
- Blue (71%)



- Red (78%)
- Yellow (70%)
- Blue (71%)



- Cyan (0%)
- Magenta (10%)
- Yellow (9%)
- Black (22%)



- Cyan (22%)
- Magenta (30%)
- Yellow (29%)

Brightness & Saturation Gradients

These gradients show how the HunterLab color 68.6599, 3.1973, 5.0766 changes by changing the brightness by 10 percent. The first figure shows a shift by +10% for each color and the second figure -10%.

Similar to the brightness gradients but the following saturation gradients show a change of the HunterLab color 68.6599, 3.1973, 5.0766 by changing the saturation by 10% instead.

■ 68.6599, 3.1973,
5.0766

■ 68.6599, 3.1973,
5.0766

193.7495, -0.7431,
12.4500

■ 57.5755, 3.4117,
4.3963

■ 92.6976, 2.6074,
6.5299

■ 47.1603, 3.5691,
3.7462

105.5875, 2.2439,
7.2984

■ 37.4620, 3.6604,
3.1288

119.0250, 1.8383,
8.0940

■ 28.5383, 3.6756,
2.5456

132.9887, 1.3932,
8.9158

■ 20.4633, 3.6008,
1.9978

147.4593, 0.9107,
9.7629

■ 13.3378, 3.4147,
1.4866

162.4198, 0.3927,

■ 6.8849, 4.3768,

10.6348

1.3290

177.8546, -0.1590,
11.5307

0.0000, NaN, NaN

0.0000, NaN, NaN

■ 68.6599, 3.1973,
5.0766

■ 68.6599, 3.1973,
5.0766

■ 62.5655, 10.5883,
6.2664

■ 75.0826, -3.9402,
4.0918

■ 56.8539, 18.2317,
7.6876

■ 81.7824, -10.8369,
3.2789

■ 51.6001, 26.0674,
9.3646

■ 88.7238, -17.5229,
2.6123

■ 46.8939, 33.9449,
11.3014

■ 95.1365, -22.9407,
1.1911

■ 42.8390, 41.5703,

■ 95.2606, -22.2376,

13.4625

-0.5738

■ 39.5433, 48.4717,
15.7478

■ 37.0968, 54.0417,
17.9801

■ 35.5367, 57.7229,
19.9305

■ 34.7212, 59.6041,
21.3267

Harmonies

Analogous

The Analogous color harmony consists of three colors that are next to each other on the color wheel.



68.6614, 2.9979, 1.6769



68.6599, 3.1973, 5.0766



68.6614, 1.5265, 7.9698

Triad

The Triadic color harmony groups three colors that are evenly spaced from another and form a triangle on the color wheel.



68.6614, 3.1954, 5.0777



68.6614, -8.2058, 8.4304



68.6614, -5.7876, -2.7815

Complementary

The Complementary color scheme is a pair of colors which are on the opposite of each other on the color wheel.



68.6599, 3.1973, 5.0766



73.3757, -10.3739, 2.8308

Split Complementary

Split-complementary colors differ from the complementary color scheme. The scheme consists of three colors, the original color and two neighbors of the complement color.



68.6614, -8.7112, -0.7828



68.6599, 3.1973, 5.0766



68.6614, -10.0875, 5.7360

Square

The Square scheme is like the rectangle color scheme, but the four colors are evenly spaced on the color wheel.



68.6614, 3.1954, 5.0777



68.6614, -5.0849, 9.8381



68.6614, -10.2706, 2.3695



68.6614, -2.2381, -2.9800

Rectangle

The Rectangle color scheme consists of four colors that form a rectangle on the color wheel.



68.6599, 3.1973, 5.0766



68.6614, -0.4003, 9.2663



68.6614, -10.2706, 2.3695



68.6614, -6.8743, -2.2933

Sweetspot

The Sweet Spot groups the original color and five complimentary colors.



68.6614, 3.1954, 5.0777



97.3551, -2.4805, 5.8058



69.0332, 5.5809, -3.2505



44.7167, -0.7922, 2.7339

0.0000, NaN, NaN



46.2646, -2.4686, 2.5136

Same Dimension

The Same Dimension uses a secret algorithm to generate beautiful new colors.



68.6614, 3.1954, 5.0777



89.6425, 6.2708, 7.0626



70.9504, -1.1766, 8.4993



32.6402, 1.2645, 2.3619



28.0106, 48.1058, 17.0400



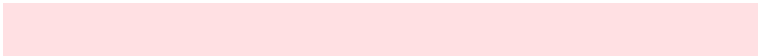
6.1441, 10.6491, 2.9847

Inverse Universe

The Inverse Universe completely reimagines the original color for something new.



68.6614, 3.1954, 5.0777



89.6425, 6.2708, 7.0626



70.9724, -6.0734, -1.0059



32.6402, 1.2645, 2.3619



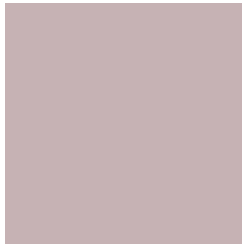
28.0106, 48.1058, 17.0400



6.1441, 10.6491, 2.9847

Previews

White Background



This preview shows how the HunterLab color 68.6599, 3.1973, 5.0766 looks on a white background.

Color Contrast Check

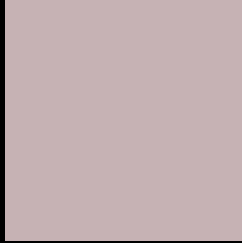
Large Text (above 18pt) WCAG AA × Fail

Any Text WCAG AA × Fail

Large Text (above 18pt) WCAG AAA × Fail

Any Text WCAG AAA × Fail

Black Background



This preview shows how the HunterLab color 68.6599, 3.1973, 5.0766 looks on a black background.

Color Contrast Check

Large Text (above 18pt) WCAG AA ✓ Pass

Any Text WCAG AA ✓ Pass

Large Text (above 18pt) WCAG AAA ✓ Pass

Any Text WCAG AAA ✓ Pass

If you want to check with other color combinations, try the [Color Contrast Checker](#).

HunterLab 68.6599, 3.1973, 5.0766 Background



This preview shows how black text looks on a background with the HunterLab color 68.6599, 3.1973, 5.0766.



This preview shows how white text looks on a background with the HunterLab color 68.6599, 3.1973,

Color Blindness Simulation

Color vision deficiency is a very complex topic, and I could not describe the different causes any better than Wikipedia does, so if you want to learn more, you should check out their [article about color blindness](#).

Dichromacy



Original Color

68.6599, 3.1973, 5.0766

Protanopia

68.7549, -2.3998, 4.1608

Deuteranopia

68.6710, 4.7187, 5.1161



Tritanopia

68.4912, 6.2082, 0.1419

Trichromacy



Original Color

68.6599, 3.1973, 5.0766

Protanomaly

68.7976, -0.7874, 4.7043

Deuteranomaly

68.5703, 4.3806, 4.9934

Tritanomaly

68.6524, 5.0203, 2.2720

Monochromacy



Original Color

68.6599, 3.1973, 5.0766

Achromatopsia

69.2330, -3.6941, 3.7616

Achromatomaly

69.0606, -1.2846, 4.0707

CSS Examples

Text

The CSS property to change the color of the text to HunterLab 68.6599, 3.1973, 5.0766 is called "color". The color property can be set on classes, ids or directly on the HTML element.

This example shows how text in the color `rgb(198, 178, 180)` looks like.

```
.text, #text, p{  
    color:rgb(198, 178, 180)  
}
```

If you want to add a text shadow in that color use the text-shadow property, you can generate a text shadow directly with our [CSS Text Shadow Generator](#).

Here you see how black text with a 4 pixel rgb(198, 178, 180) colored shadow looks like.

```
.shadow{ text-shadow: 4px 4px 2px rgb(198, 178, 180) }
```

Border

The CSS property to change the border of an element to HunterLab 68.6599, 3.1973, 5.0766 is called "border".

The border property can be set on classes, ids or directly on the HTML element.

This example shows the color as border, it can be applied via the CSS property "border" or "border-color".

```
.border, #border, table{ border:4px solid rgb(198, 178, 180) }
```


If only the border color should be changed use the property `border-color`.

```
.border{ border-color:rgb(198, 178, 180) }
```

If you want to add a box shadow in that color use:

Here you see how a box with a 4 pixel `rgb(198, 178, 180)` colored shadow looks like.

```
.boxshadow{ -moz-box-shadow:4px 4px 4px  
4px rgb(198, 178, 180); -webkit-box-  
shadow:4px 4px 4px 4px rgb(198, 178, 180);  
box-shadow:4px 4px 4px 4px rgb(198, 178,  
180) }
```

Background

The CSS property to change the background color of an element to HunterLab 68.6599, 3.1973, 5.0766 is called "background". The background property can be set on classes, ids or directly on the HTML element.

```
.background, #background, body{  
background: rgb(198, 178, 180) }
```

If only the background color should be changed can be used:

```
.background{ background-color: rgb(198,  
178, 180) }
```

This example shows the color as background, it is applied via the CSS property "background".

To optimize and compress your CSS code, you can use our [online CSS compressor and optimizer](#) based on csstidy. If you want to create a linear or radial gradient as background or border, check our [CSS Gradient Generator](#).

Hey! You found this booklet interesting? Support Converting Colors with the new Membership Option!

The pro membership hides all ads, plus gives you double the colors in the color bucket, and more awesome pro features!

[Learn more, Memberships starting at \\$2.50/m!](#)

**Follow me
on Twitter!**

@ConvertingColor