

Converting Colors

HunterLab(68.7255, 1.0562,
16.2923)

Have a look what the booklet for
HunterLab(68.7255, 1.0562,
16.2923) contains.

HunterLab(68.8313, 0.8382, 16.4688)	3
<i>Conversions</i>	4
<i>Details</i>	6
<i>Harmonies</i>	12
<i>Previews</i>	24
<i>Color Blindness Simulation</i>	28
<i>CSS Examples</i>	31

Color

**HunterLab(68.8313, 0.8382,
16.4688)**

Conversions

Conversions Part 1

Format	Color
Hex	CCB399
RGB	204, 179, 153
RGB Percent	80%, 70%, 60%
CMY	0.2000, 0.2980, 0.4000
CMYK	0.00, 0.12, 0.25, 0.20
HSL	31°, 33%, 70%
HSV	31°, 25%, 80%
XYZ	46.7717, 47.3775, 36.8166
YIQ	183.5110, 23.2460, -2.7860

Conversions

Conversions Part 2

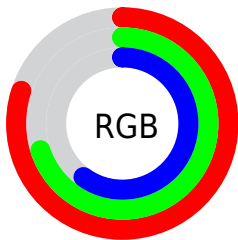
Format	Color
R _Y B	202, 204, 153
Decimal	13415321
CIE Lab	74.43, 4.96, 16.58
CIE LCh	74, 17.307, 73.356
Yxy	47.3796, 0.3571, 0.3618
Android (android.graphics.Color)	4291605401 (0xFFCCB399)
YUV	183.5110, -15.0419, 17.9689
Hunter-Lab	68.8313, 0.8382, 16.4688

Details

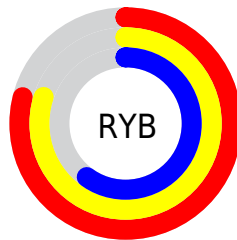
The HunterLab color $68.8313, 0.8382, 16.4688$ is a light color, and the websafe version is hex `CCCC99`. A complement of this color would be $65.5527, -5.9171, -11.3796$, and the grayscale version is $69.0833, -3.6861, 3.7534$.

A 20% lighter version of the original color is $92.2939, -2.5154, 18.9050$, and $47.1917, 1.5873, 13.3141$ is the 20% darker color. If you saturate the color by 10%, you get $65.4968, 3.3798, 20.4611$, and if you desaturate by 10%, it is $72.2958, -1.3825, 11.9340$.

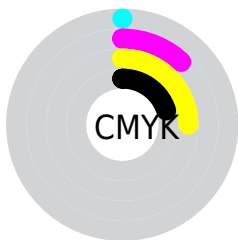
Distribution



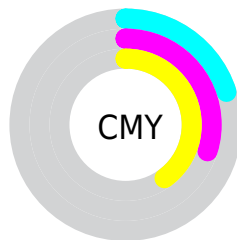
- Red (80%)
- Green (70%)
- Blue (60%)



- Red (79%)
- Yellow (80%)
- Blue (60%)



- Cyan (0%)
- Magenta (12%)
- Yellow (25%)
- Black (20%)



- Cyan (20%)
- Magenta (30%)
- Yellow (40%)

Brightness & Saturation Gradients

These gradients show how the HunterLab color 68.8313, 0.8382, 16.4688 changes by changing the brightness by 10 percent. The first figure shows a shift by +10% for each color and the second figure -10%.

Similar to the brightness gradients but the following saturation gradients show a change of the HunterLab color 68.8313, 0.8382, 16.4688 by changing the saturation by 10% instead.

■ 68.8313, 0.8382,
16.4688

■ 68.8313, 0.8382,
16.4688

193.9917, -4.0276,
29.5368

■ 57.7372, 1.1785,
14.9783

■ 92.8870, 0.0138,
19.3981

■ 47.3116, 1.4696,
13.4563

■ 105.7854, -0.4592,
20.8472

■ 37.6022, 1.7036,
11.8898

119.2309, -0.9701,
22.2919

■ 28.6663, 1.8726,
10.2570

133.2024, -1.5167,
23.7354

■ 20.5779, 1.9656,
8.5237

147.6805, -2.0972,
25.1799

■ 13.4372, 1.9658,
6.8453

162.6482, -2.7101,

■ 7.0046, 2.7097,

26.6273

4.9032

178.0900, -3.3540,
28.0792

0.0000, NaN, NaN

0.0000, NaN, NaN

■ 68.8313, 0.8382,
16.4688

■ 68.8313, 0.8382,
16.4688

■ 65.4968, 3.3798,
20.4611

■ 72.2958, -1.3825,
11.9340

■ 62.2984, 6.2676,
23.8528

■ 75.8757, -3.2965,
6.9055

■ 59.2493, 9.5131,
26.5890

■ 79.5637, -4.9283,
1.4322

■ 56.3615, 13.1219,
28.6172

■ 83.3516, -6.2996,
-4.4431

■ 53.6475, 17.0868,

■ 87.2321, -7.4317,

29.8949

-10.6812

■ 51.1190, 21.3826,
30.4019

■ 90.4365, -12.5667,
-6.5181

■ 48.7859, 25.9570,
30.1601

■ 93.7042, -17.6349,
-2.4303

■ 47.6880, 28.2917,
29.8804

■ 95.6961, -20.6483,
-0.0097

Harmonies

Analogous

The Analogous color harmony consists of three colors that are next to each other on the color wheel.



68.8329, 8.0029, 13.1510



68.8313, 0.8382, 16.4688



68.8329, -7.2329, 16.6450

Triad

The Triadic color harmony groups three colors that are evenly spaced from another and form a triangle on the color wheel.



68.8329, 0.8359, 16.4698



68.8329, -18.1666, 0.2402



68.8329, 7.3315, -7.9042

Complementary

The Complementary color scheme is a pair of colors which are on the opposite of each other on the color wheel.



68.8313, 0.8382, 16.4688



65.5527, -5.9171, -11.3796

Split Complementary

Split-complementary colors differ from the complementary color scheme. The scheme consists of three colors, the original color and two neighbors of the complement color.



68.8329, -0.0462, -12.2612



68.8313, 0.8382, 16.4688



68.8329, -14.6255, -7.2058

Square

The Square scheme is like the rectangle color scheme, but the four colors are evenly spaced on the color wheel.



68.8329, 0.8359, 16.4698



68.8329, -17.9550, 7.8518



68.8329, -8.0755, -11.9917



68.8329, 11.8701, -0.6278

Rectangle

The Rectangle color scheme consists of four colors that form a rectangle on the color wheel.



68.8313, 0.8382, 16.4688



68.8329, -12.0222, 14.9960



68.8329, -8.0755, -11.9917



68.8329, 5.0869, -9.7944

Sweetspot

The Sweet Spot groups the original color and five complimentary colors.



68.8329, 0.8359, 16.4698



96.6684, -3.7580, 10.2896



62.3337, 18.0028, -1.5892



44.5918, -1.6717, 4.9479

0.0000, NaN, NaN



46.2646, -2.4686, 2.5136

Same Dimension

The Same Dimension uses a secret algorithm to generate beautiful new colors.



68.8329, 0.8359, 16.4698



86.2448, 2.7871, 24.0556



76.3697, -11.5345, 23.4593



34.8476, -1.1686, 4.3032



38.0797, 21.8791, 23.8476



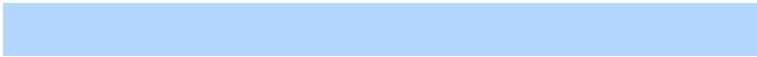
9.4857, 3.1596, 5.9004

Inverse Universe

The Inverse Universe completely reimagines the original color for something new.



65.5527, -5.9171, -11.3796



81.1497, -7.6596, -19.2528



58.2366, 6.6749, -22.1584



34.2588, -2.3885, -0.6866



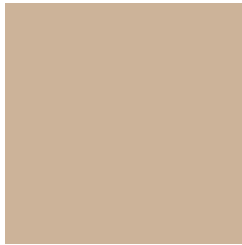
29.4348, 8.0404, -54.1478



7.7381, -0.1045, -9.4464

Previews

White Background



This preview shows how the HunterLab color 68.8313, 0.8382, 16.4688 looks on a white background.

Color Contrast Check

Large Text (above 18pt) WCAG AA × Fail

Any Text WCAG AA × Fail

Large Text (above 18pt) WCAG AAA × Fail

Any Text WCAG AAA × Fail

Black Background



This preview shows how the HunterLab color 68.8313, 0.8382, 16.4688 looks on a black background.

Color Contrast Check

Large Text (above 18pt) WCAG AA ✓ Pass

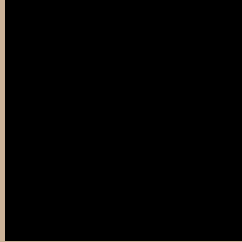
Any Text WCAG AA ✓ Pass

Large Text (above 18pt) WCAG AAA ✓ Pass

Any Text WCAG AAA ✓ Pass

If you want to check with other color combinations, try the [Color Contrast Checker](#).

HunterLab 68.8313, 0.8382, 16.4688 Background



This preview shows how black text looks on a background with the HunterLab color 68.8313, 0.8382, 16.4688.



This preview shows how white text looks on a background with the HunterLab color 68.8313, 0.8382,

16.4688.

Color Blindness Simulation

Color vision deficiency is a very complex topic, and I could not describe the different causes any better than Wikipedia does, so if you want to learn more, you should check out their [article about color blindness](#).

Dichromacy



Original Color

68.8313, 0.8382, 16.4688

Protanopia

68.9717, -4.6481, 15.7613

Deuteranopia

68.7260, 4.9751, 16.0614



Tritanopia

68.7843, 9.9662, 1.5492

Trichromacy



Original Color

68.8313, 0.8382, 16.4688

Protanomaly

69.0357, -2.9429, 16.2319

Deuteranomaly

68.6930, 3.3918, 16.0006

Tritanomaly

68.8558, 6.5166, 7.6197

Monochromacy



Original Color

68.8313, 0.8382, 16.4688

Achromatopsia

69.2330, -3.6941, 3.7616

Achromatomaly

68.9561, -2.2273, 8.4582

CSS Examples

Text

The CSS property to change the color of the text to HunterLab 68.8313, 0.8382, 16.4688 is called "color". The color property can be set on classes, ids or directly on the HTML element.

This example shows how text in the color `rgb(204, 179, 153)` looks like.

```
.text, #text, p{  
    color:rgb(204, 179, 153)  
}
```

If you want to add a text shadow in that color use the text-shadow property, you can generate a text shadow directly with our [CSS Text Shadow Generator](#).

Here you see how black text with a 4 pixel rgb(204, 179, 153) colored shadow looks like.

```
.shadow{ text-shadow: 4px 4px 2px rgb(204, 179, 153) }
```

Border

The CSS property to change the border of an element to HunterLab 68.8313, 0.8382, 16.4688 is called "border". The border property can be set on classes, ids or directly on the HTML element.

This example shows the color as border, it can be applied via the CSS property "border" or "border-color".

```
.border, #border, table{ border:4px solid rgb(204, 179, 153) }
```


If only the border color should be changed use the property `border-color`.

```
.border{ border-color:rgb(204, 179, 153) }
```

If you want to add a box shadow in that color use:

Here you see how a box with a 4 pixel `rgb(204, 179, 153)` colored shadow looks like.

```
.boxshadow{ -moz-box-shadow:4px 4px 4px  
4px rgb(204, 179, 153); -webkit-box-  
shadow:4px 4px 4px 4px rgb(204, 179, 153);  
box-shadow:4px 4px 4px 4px rgb(204, 179,  
153) }
```

Background

The CSS property to change the background color of an element to HunterLab 68.8313, 0.8382, 16.4688 is called "background". The background property can be set on classes, ids or directly on the HTML element.

```
.background, #background, body{  
background: rgb(204, 179, 153) }
```

If only the background color should be changed can be used:

```
.background{ background-color: rgb(204,  
179, 153) }
```

This example shows the color as background, it is applied via the CSS property "background".

To optimize and compress your CSS code, you can use our [online CSS compressor and optimizer](#) based on csstidy. If you want to create a linear or radial gradient as background or border, check our [CSS Gradient Generator](#).

Hey! You found this booklet interesting? Support Converting Colors with the new Membership Option!

The pro membership hides all ads, plus gives you double the colors in the color bucket, and more awesome pro features!

[Learn more, Memberships starting at \\$2.50/m!](#)

**Follow me
on Twitter!**

@ConvertingColor