

Converting Colors

HunterLab(68.7860, -1.0594,
11.1069)

Have a look what the booklet for
HunterLab(68.7860, -1.0594,
11.1069) contains.

HunterLab(68.8499, -1.4546, 11.3323)	3
<i>Conversions</i>	4
<i>Details</i>	6
<i>Harmonies</i>	12
<i>Previews</i>	24
<i>Color Blindness Simulation</i>	28
<i>CSS Examples</i>	31

Color

**HunterLab(68.8499, -1.4546,
11.3323)**

Conversions

Conversions Part 1

Format	Color
Hex	C3B5A6
RGB	195, 181, 166
RGB Percent	76%, 71%, 65%
CMY	0.2353, 0.2902, 0.3490
CMYK	0.00, 0.07, 0.15, 0.24
HSL	31°, 19%, 71%
HSV	31°, 15%, 76%
XYZ	45.9126, 47.4031, 42.8063
YIQ	183.4760, 13.1590, -1.6970

Conversions

Conversions Part 2

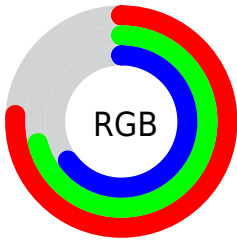
Format	Color
RYB	193, 195, 166
Decimal	12826022
CIELab	74.45, 2.46, 9.43
CIELCh	74, 9.744, 75.406
Yxy	47.4052, 0.3373, 0.3482
Android (android.graphics.Color)	4291016102 (0xFFC3B5A6)
YUV	183.4760, -8.6157, 10.1065
Hunter-Lab	68.8499, -1.4546, 11.3323

Details

The HunterLab color **68.8499, -1.4546, 11.3323** is a light color, and the websafe version is hex **CCCCCC**. A complement of this color would be **66.8497, -5.1139, -4.6887**, and the grayscale version is **69.0456, -3.6841, 3.7514**.

A 20% lighter version of the original color is **92.9969, -2.5112, 13.6478**, and **47.2398, -0.5194, 9.1194** is the 20% darker color. If you saturate the color by 10%, you get **65.6077, 0.5682, 15.6764**, and if you desaturate by 10%, it is **72.2037, -3.1936, 6.5174**.

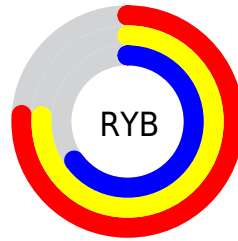
Distribution



Red (76%)

Green (71%)

Blue (65%)



Red (76%)

Yellow (76%)

Blue (65%)

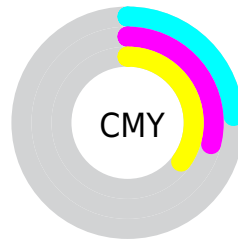


Cyan (0%)

Magenta (7%)

Yellow (15%)

Black (24%)



Cyan (24%)

Magenta (29%)

Yellow (35%)

Brightness & Saturation Gradients

These gradients show how the HunterLab color 68.8499, -1.4546, 11.3323 changes by changing the brightness by 10 percent. The first figure shows a shift by +10% for each color and the second figure -10%.

Similar to the brightness gradients but the following saturation gradients show a change of the HunterLab color 68.8499, -1.4546, 11.3323 by changing the saturation by 10% instead.

■ 68.8499, -1.4546,
11.3323

■ 68.8499, -1.4546,
11.3323

194.0179, -7.2357,
21.6083

■ 57.7547, -0.9886,
10.2430

■ 92.9076, -2.5110,
13.5336

■ 47.3280, -0.5643,
9.1542

■ 105.8068, -3.0924,
14.6482

■ 37.6173, -0.1880,
8.0610

119.2532, -3.7075,
15.7744

■ 28.6802, 0.1350,
6.9538

133.2255, -4.3545,
16.9134

■ 20.5903, 0.3970,
5.8167

147.7044, -5.0320,
18.0658

■ 13.4479, 0.5863,
4.6203

162.6729, -5.7387,

■ 7.0174, 1.1498,

19.2322

4.9122

178.1155, -6.4736,
20.4129

0.0000, NaN, NaN

0.0000, NaN, NaN

■ 68.8499, -1.4546,
11.3323

■ 68.8499, -1.4546,
11.3323

■ 65.6077, 0.5682,
15.6764

■ 72.2037, -3.1936,
6.5174

■ 62.4816, 2.9003,
19.4981

■ 75.6563, -4.6634,
1.2733

■ 59.4827, 5.5571,
22.7471

■ 79.2020, -5.8863,
-4.3582

■ 56.6215, 8.5517,
25.3717

■ 82.8340, -6.8820,
-10.3409

■ 53.9088, 11.8897,

■ 86.2223, -9.4588,

27.3232

-12.0920

■ 51.3559, 15.5655,
28.5630

■ 89.2551, -14.2503,
-8.0965

■ 48.9730, 19.5572,
29.0724

■ 92.3433, -18.9814,
-4.1747

■ 46.7690, 23.8188,
28.8718

■ 95.0485, -23.0146,
-0.8495

■ 45.7031, 26.0525,
28.6181

Harmonies

Analogous

The Analogous color harmony consists of three colors that are next to each other on the color wheel.



68.8514, 2.5805, 9.4210



68.8499, -1.4546, 11.3323



68.8514, -5.9889, 11.3063

Triad

The Triadic color harmony groups three colors that are evenly spaced from another and form a triangle on the color wheel.



68.8514, -1.4566, 11.3333



68.8514, -11.9198, 1.4973



68.8514, 2.6715, -2.3624

Complementary

The Complementary color scheme is a pair of colors which are on the opposite of each other on the color wheel.



68.8499, -1.4546, 11.3323



66.8497, -5.1139, -4.6887

Split Complementary

Split-complementary colors differ from the complementary color scheme. The scheme consists of three colors, the original color and two neighbors of the complement color.



68.8514, -1.3350, -4.7786



68.8499, -1.4546, 11.3323



68.8514, -9.7196, -2.4535

Square

The Square scheme is like the rectangle color scheme, but the four colors are evenly spaced on the color wheel.



68.8514, -1.4566, 11.3333



68.8514, -11.9504, 5.8143



68.8514, -5.8705, -4.8130



68.8514, 5.0056, 1.6152

Rectangle

The Rectangle color scheme consists of four colors that form a rectangle on the color wheel.



68.8499, -1.4546, 11.3323



68.8514, -8.6790, 10.1990



68.8514, -5.8705, -4.8130



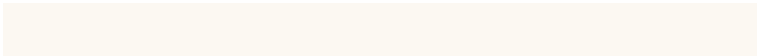
68.8514, 1.4711, -3.3952

Sweetspot

The Sweet Spot groups the original color and five complimentary colors.



68.8514, -1.4566, 11.3333



96.9980, -4.4461, 8.1746



64.9394, 8.3508, 0.7292



45.2280, -2.0043, 4.0681

0.0000, NaN, NaN



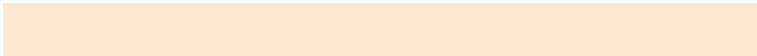
46.2646, -2.4686, 2.5136

Same Dimension

The Same Dimension uses a secret algorithm to generate beautiful new colors.



68.8514, -1.4566, 11.3333



90.6465, -1.0705, 17.2221



73.0217, -8.5475, 15.5532



33.0462, -1.1443, 4.0844



37.0742, 20.4823, 23.2035



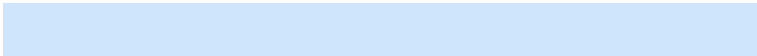
8.5522, 2.4575, 5.3129

Inverse Universe

The Inverse Universe completely reimagines the original color for something new.



66.8497, -5.1139, -4.6887



87.3665, -7.0547, -9.0419



62.7477, 2.0311, -10.0848



32.4534, -2.2290, -0.6579



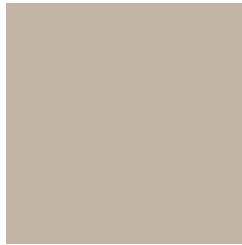
28.1846, 8.2689, -53.0786



6.9369, -0.2540, -8.1222

Previews

White Background



This preview shows how the HunterLab color 68.8499, -1.4546, 11.3323 looks on a white background.

Color Contrast Check

Large Text (above 18pt) WCAG AA × Fail

Any Text WCAG AA × Fail

Large Text (above 18pt) WCAG AAA × Fail

Any Text WCAG AAA × Fail

Black Background



This preview shows how the HunterLab color 68.8499, -1.4546, 11.3323 looks on a black background.

Color Contrast Check

Large Text (above 18pt) WCAG AA ✓ Pass

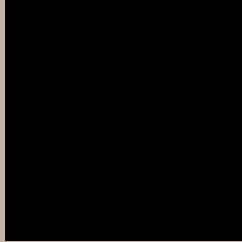
Any Text WCAG AA ✓ Pass

Large Text (above 18pt) WCAG AAA ✓ Pass

Any Text WCAG AAA ✓ Pass

If you want to check with other color combinations, try the [Color Contrast Checker](#).

HunterLab 68.8499, -1.4546, 11.3323 Background



This preview shows how black text looks on a background with the HunterLab color 68.8499, -1.4546, 11.3323.



This preview shows how white text looks on a background with the HunterLab color 68.8499, -1.4546,

Color Blindness Simulation

Color vision deficiency is a very complex topic, and I could not describe the different causes any better than Wikipedia does, so if you want to learn more, you should check out their [article about color blindness](#).

Dichromacy



Original Color

68.8499, -1.4546, 11.3323

Protanopia

68.9958, -3.9505, 11.0293

Deuteranopia

68.9200, 4.8199, 11.1017



Tritanopia

68.7107, 5.5305, -0.0961

Trichromacy



Original Color

68.8499, -1.4546, 11.3323

Protanomaly

68.8857, -2.8004, 10.9315

Deuteranomaly

68.7949, 2.9183, 10.9340

Tritanomaly

68.6211, 3.1856, 4.1017

Monochromacy



Original Color

68.8499, -1.4546, 11.3323

Achromatopsia

68.8136, -3.6717, 3.7388

Achromatomaly

68.6986, -2.8902, 6.3828

CSS Examples

Text

The CSS property to change the color of the text to HunterLab 68.8499, -1.4546, 11.3323 is called "color". The color property can be set on classes, ids or directly on the HTML element.

This example shows how text in the color `rgb(195, 181, 166)` looks like.

```
.text, #text, p{  
    color:rgb(195, 181, 166)  
}
```

If you want to add a text shadow in that color use the text-shadow property, you can generate a text shadow directly with our [CSS Text Shadow Generator](#).

Here you see how black text with a 4 pixel rgb(195, 181, 166) colored shadow looks like.

```
.shadow{ text-shadow: 4px 4px 2px rgb(195, 181, 166) }
```

Border

The CSS property to change the border of an element to HunterLab 68.8499, -1.4546, 11.3323 is called "border". The border property can be set on classes, ids or directly on the HTML element.

This example shows the color as border, it can be applied via the CSS property "border" or "border-color".

```
.border, #border, table{ border:4px solid rgb(195, 181, 166) }
```


If only the border color should be changed use the property `border-color`.

```
.border{ border-color:rgb(195, 181, 166) }
```

If you want to add a box shadow in that color use:

Here you see how a box with a 4 pixel `rgb(195, 181, 166)` colored shadow looks like.

```
.boxshadow{ -moz-box-shadow:4px 4px 4px  
4px rgb(195, 181, 166); -webkit-box-  
shadow:4px 4px 4px 4px rgb(195, 181, 166);  
box-shadow:4px 4px 4px 4px rgb(195, 181,  
166) }
```

Background

The CSS property to change the background color of an element to HunterLab 68.8499, -1.4546, 11.3323 is called "background". The background property can be set on classes, ids or directly on the HTML element.

```
.background, #background, body{  
background: rgb(195, 181, 166) }
```

If only the background color should be changed can be used:

```
.background{ background-color: rgb(195,  
181, 166) }
```

This example shows the color as background, it is applied via the CSS property "background".

To optimize and compress your CSS code, you can use our [online CSS compressor and optimizer](#) based on csstidy. If you want to create a linear or radial gradient as background or border, check our [CSS Gradient Generator](#).

Hey! You found this booklet interesting? Support Converting Colors with the new Membership Option!

The pro membership hides all ads, plus gives you double the colors in the color bucket, and more awesome pro features!

[Learn more, Memberships starting at \\$2.50/m!](#)

**Follow me
on Twitter!**

@ConvertingColor