

Converting Colors

HunterLab(68.7888, -1.0772,
13.5994)

Have a look what the booklet for
HunterLab(68.7888, -1.0772,
13.5994) contains.

| | |
|---|----|
| HunterLab(68.6923, -0.7952, 13.6084) | 3 |
| <i>Conversions</i> | 4 |
| <i>Details</i> | 6 |
| <i>Harmonies</i> | 12 |
| <i>Previews</i> | 24 |
| <i>Color Blindness Simulation</i> | 28 |
| <i>CSS Examples</i> | 31 |

Color

**HunterLab(68.6923, -0.7952,
13.6084)**

Conversions

Conversions Part 1

| Format | Color |
|---------------|----------------------------|
| Hex | C6B4A0 |
| RGB | 198, 180, 160 |
| RGB Percent | 78%, 71%, 63% |
| CMY | 0.2235, 0.2941, 0.3725 |
| CMYK | 0.00, 0.09, 0.19, 0.22 |
| HSL | 32°, 25%, 70% |
| HSV | 32°, 19%, 78% |
| XYZ | 45.9551, 47.1863, 39.9435 |
| YIQ | 183.1020, 17.1480, -2.4040 |

Conversions

Conversions Part 2

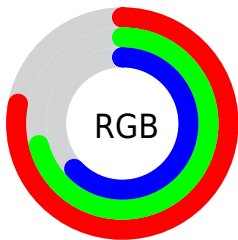
| Format | Color |
|-------------------------------------|---|
| RYB | 194, 198, 160 |
| Decimal | 13022368 |
| CIELab | 74.31, 3.17, 12.53 |
| CIElCh | 74, 12.929, 75.801 |
| Yxy | 47.1884, 0.3453, 0.3546 |
| Android (android.graphics.Color) | 4291212448 (0xFFC6B4A0) |
| YUV | 183.1020, -11.3893, 13.0655 |
| Hunter-Lab | 68.6923, -0.7952, 13.6084 |

Details

The HunterLab color **68.6923, -0.7952, 13.6084** is a light color, and the websafe version is hex **CCCCCC**. A complement of this color would be **65.8715, -5.2283, -7.5901**, and the grayscale version is **68.8988, -3.6763, 3.7434**.

A 20% lighter version of the original color is **92.8209, -1.8589, 16.0976**, and **47.1298, 0.2828, 10.8451** is the 20% darker color. If you saturate the color by 10%, you get **65.4910, 1.3092, 17.8459**, and if you desaturate by 10%, it is **72.0088, -2.6011, 8.8600**.

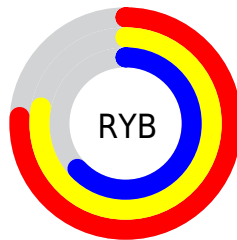
Distribution



Red (78%)

Green (71%)

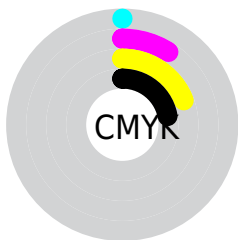
Blue (63%)



Red (76%)

Yellow (78%)

Blue (63%)

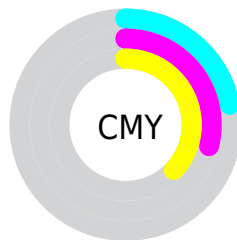


Cyan (0%)

Magenta (9%)

Yellow (19%)

Black (22%)



Cyan (22%)

Magenta (29%)

Yellow (37%)

Brightness & Saturation Gradients

These gradients show how the HunterLab color 68.6923, -0.7952, 13.6084 changes by changing the brightness by 10 percent. The first figure shows a shift by +10% for each color and the second figure -10%.

Similar to the brightness gradients but the following saturation gradients show a change of the HunterLab color 68.6923, -0.7952, 13.6084 by changing the saturation by 10% instead.

■ 68.6923, -0.7952,
13.6084

■ 68.6923, -0.7952,
13.6084

193.7953, -6.3095,
25.0789

■ 57.6061, -0.3660,
12.3479

■ 92.7334, -1.7838,
16.1205

■ 47.1889, 0.0193,
11.0745

■ 105.6249, -2.3337,
17.3781

■ 37.4885, 0.3540,
9.7796

119.0640, -2.9184,
18.6406

■ 28.5625, 0.6317,
8.4485

133.0291, -3.5361,
19.9099

■ 20.4849, 0.8439,
7.0570

147.5012, -4.1854,
21.1874

■ 13.3566, 0.9772,
5.5823

162.4630, -4.8648,

■ 6.9077, 1.6316,

22.4741

4.8354

177.8991, -5.5732,
23.7711

0.0000, NaN, NaN

0.0000, NaN, NaN

■ 68.6923, -0.7952,
13.6084

■ 68.6923, -0.7952,
13.6084

■ 65.4910, 1.3092,
17.8459

■ 72.0088, -2.6011,
8.8600

■ 62.4094, 3.7372,
21.5190

■ 75.4276, -4.1227,
3.6449

■ 59.4586, 6.5026,
24.5768

■ 78.9426, -5.3827,
-1.9925

■ 56.6492, 9.6158,
26.9686

■ 82.5470, -6.4011,
-8.0131

■ 53.9915, 13.0786,

■ 86.0833, -8.0306,

28.6500

-12.2576

■ 51.4961, 16.8795,
29.5906

■ 89.0899, -12.8288,
-8.2900

■ 49.1722, 20.9884,
29.7879

■ 92.1523, -17.5671,
-4.3936

■ 47.0217, 25.3248,
29.3599

■ 95.2606, -22.2378,
-0.5738

■ 46.8542, 25.6764,
29.3208

Harmonies

Analogous

The Analogous color harmony consists of three colors that are next to each other on the color wheel.



68.6938, 4.6156, 11.1966



68.6923, -0.7952, 13.6084



68.6938, -6.8025, 13.5418

Triad

The Triadic color harmony groups three colors that are evenly spaced from another and form a triangle on the color wheel.



68.6938, -0.7973, 13.6094



68.6938, -14.4894, 0.6627



68.6938, 4.8560, -4.4164

Complementary

The Complementary color scheme is a pair of colors which are on the opposite of each other on the color wheel.



68.6923, -0.7952, 13.6084



65.8715, -5.2283, -7.5901

Split Complementary

Split-complementary colors differ from the complementary color scheme. The scheme consists of three colors, the original color and two neighbors of the complement color.



68.6938, -0.4783, -7.7618



68.6923, -0.7952, 13.6084



68.6938, -11.5787, -4.6611

Square

The Square scheme is like the rectangle color scheme, but the four colors are evenly spaced on the color wheel.



68.6938, -0.7973, 13.6094



68.6938, -14.5681, 6.3940



68.6938, -6.4943, -7.8551



68.6938, 7.9550, 0.9740

Rectangle

The Rectangle color scheme consists of four colors that form a rectangle on the color wheel.



68.6923, -0.7952, 13.6084



68.6938, -10.3308, 12.1088



68.6938, -6.4943, -7.8551



68.6938, 3.2567, -5.8371

Sweetspot

The Sweet Spot groups the original color and five complimentary colors.



68.6938, -0.7973, 13.6094



97.2200, -4.1282, 9.7014



63.5430, 12.2122, -0.1125



44.8398, -1.8453, 4.6972

0.0000, NaN, NaN



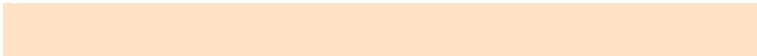
46.2646, -2.4686, 2.5136

Same Dimension

The Same Dimension uses a secret algorithm to generate beautiful new colors.



68.6938, -0.7973, 13.6094



89.6229, 0.0530, 20.5386



74.0583, -9.9045, 18.8349



33.9787, -1.2133, 4.2301



38.0121, 20.1929, 23.7764



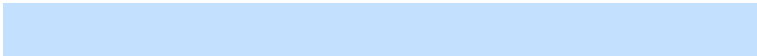
9.1020, 2.6336, 5.6547

Inverse Universe

The Inverse Universe completely reimagines the original color for something new.



65.8715, -5.2283, -7.5901



85.0773, -7.0638, -13.6311



60.6288, 3.9770, -14.8177



33.3197, -2.2520, -0.7142



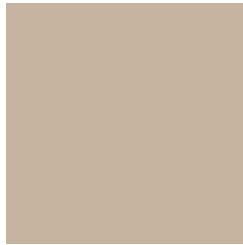
28.2837, 9.2145, -55.2437



7.2358, -0.0103, -9.0219

Previews

White Background



This preview shows how the HunterLab color 68.6923, -0.7952, 13.6084 looks on a white background.

Color Contrast Check

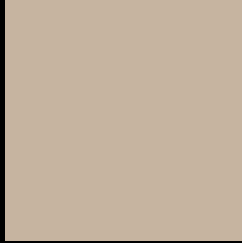
Large Text (above 18pt) WCAG AA × Fail

Any Text WCAG AA × Fail

Large Text (above 18pt) WCAG AAA × Fail

Any Text WCAG AAA × Fail

Black Background



This preview shows how the HunterLab color 68.6923, -0.7952, 13.6084 looks on a black background.

Color Contrast Check

Large Text (above 18pt) WCAG AA ✓ Pass

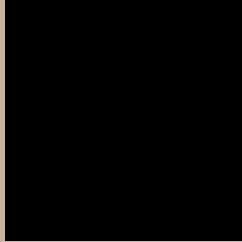
Any Text WCAG AA ✓ Pass

Large Text (above 18pt) WCAG AAA ✓ Pass

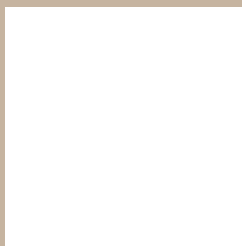
Any Text WCAG AAA ✓ Pass

If you want to check with other color combinations, try the [Color Contrast Checker](#).

HunterLab 68.6923, -0.7952, 13.6084 Background



This preview shows how black text looks on a background with the HunterLab color 68.6923, -0.7952, 13.6084.



This preview shows how white text looks on a background with the HunterLab color 68.6923, -0.7952, 13.6084.

Color Blindness Simulation

Color vision deficiency is a very complex topic, and I could not describe the different causes any better than Wikipedia does, so if you want to learn more, you should check out their [article about color blindness](#).

Dichromacy



Original Color

68.6923, -0.7952, 13.6084

Protanopia

68.6334, -3.9922, 13.0937

Deuteranopia

68.5812, 4.8391, 13.1939



Tritanopia

68.7614, 7.0441, 0.9812

Trichromacy



Original Color

68.6923, -0.7952, 13.6084

Protanomaly

68.6224, -2.5021, 13.1083

Deuteranomaly

68.4506, 2.9229, 13.0243

Tritanomaly

68.6121, 4.4028, 5.9586

Monochromacy



Original Color

68.6923, -0.7952, 13.6084

Achromatopsia

68.8136, -3.6717, 3.7388

Achromatomaly

68.7331, -2.8859, 7.3172

CSS Examples

Text

The CSS property to change the color of the text to HunterLab 68.6923, -0.7952, 13.6084 is called "color". The color property can be set on classes, ids or directly on the HTML element.

This example shows how text in the color `rgb(198, 180, 160)` looks like.

```
.text, #text, p{  
    color:rgb(198, 180, 160)  
}
```

If you want to add a text shadow in that color use the text-shadow property, you can generate a text shadow directly with our [CSS Text Shadow Generator](#).

Here you see how black text with a 4 pixel rgb(198, 180, 160) colored shadow looks like.

```
.shadow{ text-shadow: 4px 4px 2px rgb(198, 180, 160) }
```

Border

The CSS property to change the border of an element to HunterLab 68.6923, -0.7952, 13.6084 is called "border". The border property can be set on classes, ids or directly on the HTML element.

This example shows the color as border, it can be applied via the CSS property "border" or "border-color".

```
.border, #border, table{ border:4px solid rgb(198, 180, 160) }
```


If only the border color should be changed use the property `border-color`.

```
.border{ border-color:rgb(198, 180, 160) }
```

If you want to add a box shadow in that color use:

Here you see how a box with a 4 pixel `rgb(198, 180, 160)` colored shadow looks like.

```
.boxshadow{ -moz-box-shadow:4px 4px 4px  
4px rgb(198, 180, 160); -webkit-box-  
shadow:4px 4px 4px 4px rgb(198, 180, 160);  
box-shadow:4px 4px 4px 4px rgb(198, 180,  
160) }
```

Background

The CSS property to change the background color of an element to HunterLab 68.6923, -0.7952, 13.6084 is called "background". The background property can be set on classes, ids or directly on the HTML element.

```
.background, #background, body{  
background: rgb(198, 180, 160) }
```

If only the background color should be changed can be used:

```
.background{ background-color: rgb(198,  
180, 160) }
```

This example shows the color as background, it is applied via the CSS property "background".

To optimize and compress your CSS code, you can use our [online CSS compressor and optimizer](#) based on csstidy. If you want to create a linear or radial gradient as background or border, check our [CSS Gradient Generator](#).

Hey! You found this booklet
interesting? Support Converting
Colors with the new Membership
Option!

The pro membership hides all ads, plus gives you
double the colors in the color bucket, and more
awesome pro features!

[Learn more, Memberships starting at \\$2.50/m!](#)

**Follow me
on Twitter!**

@ConvertingColor