

Converting Colors

HunterLab(68.8114, 3.1770,
8.1727)

Have a look what the booklet for
HunterLab(68.8114, 3.1770, 8.1727)
contains.

HunterLab(68.7854, 3.2729, 7.9260)	3
<i>Conversions</i>	4
<i>Details</i>	6
<i>Harmonies</i>	12
<i>Previews</i>	24
<i>Color Blindness Simulation</i>	28
<i>CSS Examples</i>	31

Color

**HunterLab(68.7854, 3.2729,
7.9260)**

Conversions

Conversions Part 1

Format	Color
Hex	C9B2AE
RGB	201, 178, 174
RGB Percent	79%, 70%, 68%
CMY	0.2118, 0.3019, 0.3176
CMYK	0.00, 0.11, 0.13, 0.21
HSL	9°, 20%, 74%
HSV	9°, 13%, 79%
XYZ	47.6478, 47.3143, 46.6657
YIQ	184.4210, 14.9920, 3.6320

Conversions

Conversions Part 2

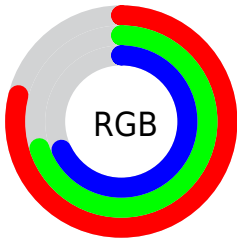
Format	Color
RYB	201, 179, 174
Decimal	13218478
CIELab	74.39, 7.58, 5.06
CIELCh	74, 9.111, 33.701
Yxy	47.3164, 0.3364, 0.3341
Android (android.graphics.Color)	4291408558 (0xFFC9B2AE)
YUV	184.4210, -5.1376, 14.5398
Hunter-Lab	68.7854, 3.2729, 7.9260

Details

The HunterLab color $68.7854, 3.2729, 7.9260$ is a light color, and the websafe version is hex `CCCCCC`. A complement of this color would be $72.9021, -10.1389, -0.1966$, and the grayscale version is $69.4274, -3.7045, 3.7721$.

A 20% lighter version of the original color is $92.6082, 1.3965, 9.6302$, and $47.1968, 3.9350, 6.0212$ is the 20% darker color. If you saturate the color by 10%, you get $63.4012, 9.0882, 10.6775$, and if you desaturate by 10%, it is $74.4334, -2.2477, 5.1234$.

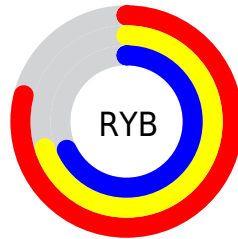
Distribution



Red (79%)

Green (70%)

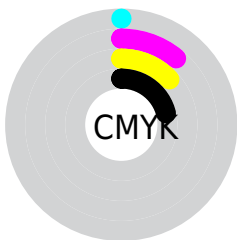
Blue (68%)



Red (79%)

Yellow (70%)

Blue (68%)

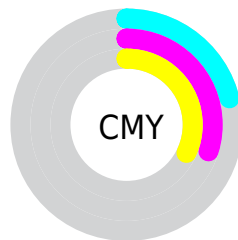


Cyan (0%)

Magenta (11%)

Yellow (13%)

Black (21%)



Cyan (21%)

Magenta (30%)

Yellow (32%)

Brightness & Saturation Gradients

These gradients show how the HunterLab color 68.7854, 3.2729, 7.9260 changes by changing the brightness by 10 percent. The first figure shows a shift by +10% for each color and the second figure -10%.

Similar to the brightness gradients but the following saturation gradients show a change of the HunterLab color 68.7854, 3.2729, 7.9260 by changing the saturation by 10% instead.

■ 68.7854, 3.2729,
7.9260

■ 68.7854, 3.2729,
7.9260

193.9268, -0.6413,
16.5622

■ 57.6939, 3.4837,
7.0691

■ 92.8363, 2.6895,
9.7033

■ 47.2711, 3.6375,
6.2300

105.7324, 2.3291,
10.6222

■ 37.5646, 3.7249,
5.4083

119.1758, 1.9264,
11.5616

■ 28.6320, 3.7360,
4.6010

133.1451, 1.4842,
12.5214

■ 20.5471, 3.6569,
3.8026

147.6212, 1.0045,
13.5017

■ 13.4105, 3.4663,
3.0018

162.5870, 0.4892,

■ 6.9727, 4.3647,

14.5020

3.3850

178.0269, -0.0598,
15.5223

0.0000, NaN, NaN

0.0000, NaN, NaN

■ 68.7854, 3.2729,
7.9260

■ 68.7854, 3.2729,
7.9260

■ 63.4012, 9.0882,
10.6775

■ 74.4334, -2.2477,
5.1234

■ 58.3172, 15.2202,
13.3446

■ 80.3070, -7.4950,
2.2849

■ 53.5847, 21.6573,
15.8818

■ 86.3803, -12.5024,
-0.5772

■ 49.2632, 28.3436,
18.2196

■ 92.6310, -17.3010,
-3.4566

■ 45.4206, 35.1476,

■ 95.4765, -21.4488,

20.2611

-0.2938

■ 42.1303, 41.8327,
21.8845

■ 39.4616, 48.0431,
22.9620

■ 37.4652, 53.3376,
23.4063

■ 36.5189, 56.0744,
23.4845

Harmonies

Analogous

The Analogous color harmony consists of three colors that are next to each other on the color wheel.



68.7869, 4.6885, 4.2451



68.7854, 3.2729, 7.9260



68.7869, -0.0088, 10.3670

Triad

The Triadic color harmony groups three colors that are evenly spaced from another and form a triangle on the color wheel.



68.7869, 3.2709, 7.9271



68.7869, -10.8612, 7.1064



68.7869, -3.1447, -4.4902

Complementary

The Complementary color scheme is a pair of colors which are on the opposite of each other on the color wheel.



68.7854, 3.2729, 7.9260



72.9021, -10.1389, -0.1966

Split Complementary

Split-complementary colors differ from the complementary color scheme. The scheme consists of three colors, the original color and two neighbors of the complement color.



68.7869, -7.2640, -3.6104



68.7854, 3.2729, 7.9260



68.7869, -11.6551, 3.2396

Square

The Square scheme is like the rectangle color scheme, but the four colors are evenly spaced on the color wheel.



68.7869, 3.2709, 7.9271



68.7869, -8.1582, 9.9138



68.7869, -10.3538, -0.7190



68.7869, 0.9281, -3.0556

Rectangle

The Rectangle color scheme consists of four colors that form a rectangle on the color wheel.



68.7854, 3.2729, 7.9260



68.7869, -2.7734, 11.0446



68.7869, -10.3538, -0.7190



68.7869, -4.5700, -4.4558

Sweetspot

The Sweet Spot groups the original color and five complimentary colors.



68.7869, 3.2709, 7.9271



96.9238, -2.5016, 6.9341



68.3666, 9.2024, -3.7312



44.5762, -0.9078, 3.3382

0.0000, NaN, NaN



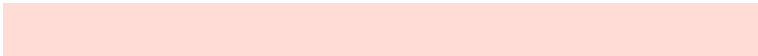
46.2646, -2.4686, 2.5136

Same Dimension

The Same Dimension uses a secret algorithm to generate beautiful new colors.



68.7869, 3.2709, 7.9271



88.0017, 6.3641, 11.3853



72.6494, -3.3511, 12.0263



32.9948, 0.4632, 3.1555



29.1019, 43.9957, 18.7027



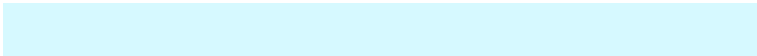
6.9614, 7.6790, 4.4240

Inverse Universe

The Inverse Universe completely reimagines the original color for something new.



72.9021, -10.1389, -0.1966



94.4811, -14.7669, -1.4092



68.8882, -3.6452, -5.1749



34.3353, -3.9014, 0.5099



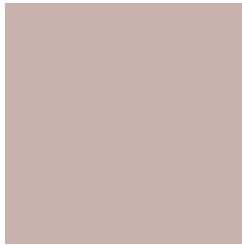
45.9530, -18.8056, -16.8414



10.3672, -4.5666, -3.1003

Previews

White Background



This preview shows how the HunterLab color 68.7854, 3.2729, 7.9260 looks on a white background.

Color Contrast Check

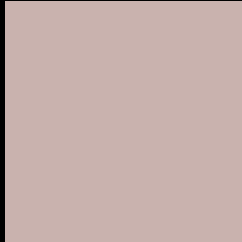
Large Text (above 18pt) WCAG AA × Fail

Any Text WCAG AA × Fail

Large Text (above 18pt) WCAG AAA × Fail

Any Text WCAG AAA × Fail

Black Background



This preview shows how the HunterLab color 68.7854, 3.2729, 7.9260 looks on a black background.

Color Contrast Check

Large Text (above 18pt) WCAG AA ✓ Pass

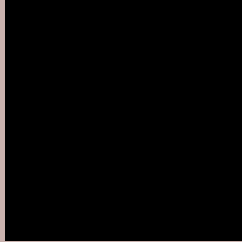
Any Text WCAG AA ✓ Pass

Large Text (above 18pt) WCAG AAA ✓ Pass

Any Text WCAG AAA ✓ Pass

If you want to check with other color combinations, try the [Color Contrast Checker](#).

HunterLab 68.7854, 3.2729, 7.9260 Background



This preview shows how black text looks on a background with the HunterLab color 68.7854, 3.2729, 7.9260.



This preview shows how white text looks on a background with the HunterLab color 68.7854, 3.2729,

7.9260.

Color Blindness Simulation

Color vision deficiency is a very complex topic, and I could not describe the different causes any better than Wikipedia does, so if you want to learn more, you should check out their [article about color blindness](#).

Dichromacy



Original Color

68.7854, 3.2729, 7.9260

Protanopia

68.7618, -2.7291, 6.9065

Deuteranopia

68.8024, 4.8113, 7.9719



Tritanopia

68.8631, 7.3817, 1.1111

Trichromacy



Original Color

68.7854, 3.2729, 7.9260

Protanomaly

68.9060, -0.7650, 7.5486

Deuteranomaly

68.6999, 4.4674, 7.8513

Tritanomaly

68.8923, 5.7004, 3.5241

Monochromacy



Original Color

68.7854, 3.2729, 7.9260

Achromatopsia

69.2330, -3.6941, 3.7616

Achromatomaly

69.0640, -1.4517, 5.4623

CSS Examples

Text

The CSS property to change the color of the text to HunterLab 68.7854, 3.2729, 7.9260 is called "color". The color property can be set on classes, ids or directly on the HTML element.

This example shows how text in the color `rgb(201, 178, 174)` looks like.

```
.text, #text, p{  
    color:rgb(201, 178, 174)  
}
```

If you want to add a text shadow in that color use the text-shadow property, you can generate a text shadow directly with our [CSS Text Shadow Generator](#).

Here you see how black text with a 4 pixel rgb(201, 178, 174) colored shadow looks like.

```
.shadow{ text-shadow: 4px 4px 2px rgb(201, 178, 174) }
```

Border

The CSS property to change the border of an element to HunterLab 68.7854, 3.2729, 7.9260 is called "border".

The border property can be set on classes, ids or directly on the HTML element.

This example shows the color as border, it can be applied via the CSS property "border" or "border-color".

```
.border, #border, table{ border:4px solid rgb(201, 178, 174) }
```


If only the border color should be changed use the property `border-color`.

```
.border{ border-color:rgb(201, 178, 174) }
```

If you want to add a box shadow in that color use:

Here you see how a box with a 4 pixel `rgb(201, 178, 174)` colored shadow looks like.

```
.boxshadow{ -moz-box-shadow:4px 4px 4px  
4px rgb(201, 178, 174); -webkit-box-  
shadow:4px 4px 4px 4px rgb(201, 178, 174);  
box-shadow:4px 4px 4px 4px rgb(201, 178,  
174) }
```

Background

The CSS property to change the background color of an element to HunterLab 68.7854, 3.2729, 7.9260 is called "background". The background property can be set on classes, ids or directly on the HTML element.

```
.background, #background, body{  
background: rgb(201, 178, 174) }
```

If only the background color should be changed can be used:

```
.background{ background-color: rgb(201,  
178, 174) }
```

This example shows the color as background, it is applied via the CSS property "background".

To optimize and compress your CSS code, you can use our [online CSS compressor and optimizer](#) based on csstidy. If you want to create a linear or radial gradient as background or border, check our [CSS Gradient Generator](#).

Hey! You found this booklet interesting? Support Converting Colors with the new Membership Option!

The pro membership hides all ads, plus gives you double the colors in the color bucket, and more awesome pro features!

[Learn more, Memberships starting at \\$2.50/m!](#)

**Follow me
on Twitter!**

@ConvertingColor