

Converting Colors

HunterLab(68.8187, 7.5959,
11.1179)

Have a look what the booklet for
HunterLab(68.8187, 7.5959,
11.1179) contains.

HunterLab(68.8818, 7.6180, 11.1097)	3
<i>Conversions</i>	4
<i>Details</i>	6
<i>Harmonies</i>	12
<i>Previews</i>	24
<i>Color Blindness Simulation</i>	28
<i>CSS Examples</i>	31

Color

**HunterLab(68.8818, 7.6180,
11.1097)**

Conversions

Conversions Part 1

Format	Color
Hex	D4AFA7
RGB	212, 175, 167
RGB Percent	83%, 69%, 65%
CMY	0.1686, 0.3137, 0.3451
CMYK	0.00, 0.17, 0.21, 0.17
HSL	11°, 34%, 74%
HSV	11°, 21%, 83%
XYZ	49.4564, 47.4470, 43.1107
YIQ	185.1510, 24.6200, 5.3560

Conversions

Conversions Part 2

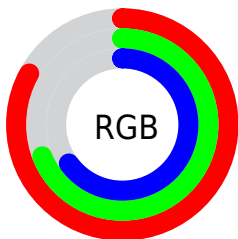
Format	Color
R _Y B	212, 177, 167
Decimal	13938599
CIE Lab	74.48, 12.18, 9.13
CIE LCh	74, 15.222, 36.862
Yxy	47.4492, 0.3532, 0.3389
Android (android.graphics.Color)	4292128679 (0xFFD4AFA7)
YUV	185.1510, -8.9484, 23.5466
Hunter-Lab	68.8818, 7.6180, 11.1097

Details

The HunterLab color $68.8818, 7.6180, 11.1097$ is a light color, and the websafe version is hex $CC9999$. A complement of this color would be $74.9355, -13.4342, -3.3433$, and the grayscale version is $69.7465, -3.7215, 3.7895$.

A 20% lighter version of the original color is $91.4799, 1.8651, 11.6123$, and $47.2493, 7.8256, 8.8988$ is the 20% darker color. If you saturate the color by 10%, you get $63.5418, 13.7513, 14.0960$, and if you desaturate by 10%, it is $74.5165, 1.8141, 8.0026$.

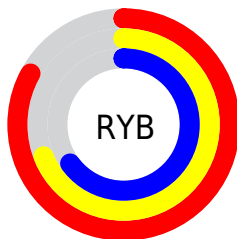
Distribution



Red (83%)

Green (69%)

Blue (65%)



Red (83%)

Yellow (69%)

Blue (65%)

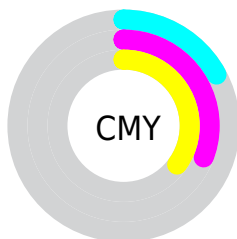


Cyan (0%)

Magenta (17%)

Yellow (21%)

Black (17%)



Cyan (17%)

Magenta (31%)

Yellow (35%)

Brightness & Saturation Gradients

These gradients show how the HunterLab color 68.8818, 7.6180, 11.1097 changes by changing the brightness by 10 percent. The first figure shows a shift by +10% for each color and the second figure -10%.

Similar to the brightness gradients but the following saturation gradients show a change of the HunterLab color 68.8818, 7.6180, 11.1097 by changing the saturation by 10% instead.

68.8818, 7.6180,
11.1097

68.8818, 7.6180,
11.1097

194.0630, 5.3425,
21.2727

57.7849, 7.6070,
10.0366

92.9428, 7.4470,
13.2817

47.3562, 7.5269,
8.9652

105.8436, 7.2803,
14.3827

37.6435, 7.3660,
7.8910

119.2916, 7.0641,
15.4961

28.7040, 7.1115,
6.8049

133.2653, 6.8018,
16.6227

20.6116, 6.7458,
5.6917

147.7456, 6.4962,
17.7633

13.4665, 6.2429,
4.5235

162.7155, 6.1497,

7.0395, 7.1631,

18.9183

4.9276

178.1593, 5.7645,
20.0880

0.0000, NaN, NaN

0.0000, NaN, NaN

■ 68.8818, 7.6180,
11.1097

■ 68.8818, 7.6180,
11.1097

■ 63.5418, 13.7513,
14.0960

■ 74.5165, 1.8141,
8.0026

■ 58.5378, 20.2246,
16.9085

■ 80.4030, -3.6763,
4.8054

■ 53.9263, 27.0025,
19.4772

■ 86.5117, -8.8863,
1.5419

■ 49.7709, 33.9905,
21.7064

■ 92.8168, -13.8490,
-1.7730

■ 46.1415, 41.0030,

■ 96.3001, -18.4565,

23.4769

0.7685

■ 43.1083, 47.7402,
24.6622

■ 40.7297, 53.7961,
25.1682

■ 39.1979, 58.1606,
25.1718

Harmonies

Analogous

The Analogous color harmony consists of three colors that are next to each other on the color wheel.



68.8834, 10.4414, 5.2868



68.8818, 7.6180, 11.1097



68.8834, 1.7814, 14.6786

Triad

The Triadic color harmony groups three colors that are evenly spaced from another and form a triangle on the color wheel.



68.8834, 7.6157, 11.1108



68.8834, -15.8172, 8.6714



68.8834, -2.0365, -10.4683

Complementary

The Complementary color scheme is a pair of colors which are on the opposite of each other on the color wheel.



68.8818, 7.6180, 11.1097



74.9355, -13.4342, -3.3433

Split Complementary

Split-complementary colors differ from the complementary color scheme. The scheme consists of three colors, the original color and two neighbors of the complement color.



68.8834, -8.9747, -9.3280



68.8818, 7.6180, 11.1097



68.8834, -16.7465, 2.1759

Square

The Square scheme is like the rectangle color scheme, but the four colors are evenly spaced on the color wheel.



68.8834, 7.6157, 11.1108



68.8834, -11.6980, 13.3732



68.8834, -14.2900, -4.5261



68.8834, 4.7242, -7.5006

Rectangle

The Rectangle color scheme consists of four colors that form a rectangle on the color wheel.



68.8818, 7.6180, 11.1097



68.8834, -2.9284, 15.5229



68.8834, -14.2900, -4.5261



68.8834, -4.4267, -10.5570

Sweetspot

The Sweet Spot groups the original color and five complimentary colors.



68.8834, 7.6157, 11.1108



95.5452, -1.3032, 7.8401



67.8371, 17.9280, -8.0900



43.9821, -0.3961, 3.7475

0.0000, NaN, NaN



46.2646, -2.4686, 2.5136

Same Dimension

The Same Dimension uses a secret algorithm to generate beautiful new colors.



68.8834, 7.6157, 11.1108



82.1892, 12.3889, 15.2002



75.3127, -3.5902, 17.5628



35.7413, 0.3804, 3.5162



30.9668, 45.1610, 19.8722



8.2980, 9.0265, 5.2712

Inverse Universe

The Inverse Universe completely reimagines the original color for something new.



74.9355, -13.4342, -3.3433



91.0089, -18.3478, -5.8765



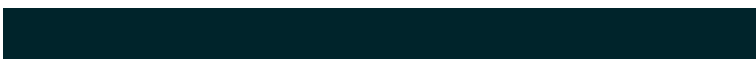
68.1362, -2.5323, -12.2600



37.0332, -4.0974, 0.4340



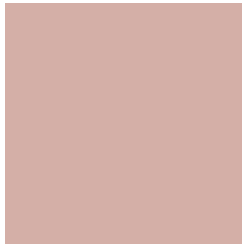
46.7180, -17.6360, -20.3223



11.9039, -4.8994, -4.3025

Previews

White Background



This preview shows how the HunterLab color 68.8818, 7.6180, 11.1097 looks on a white background.

Color Contrast Check

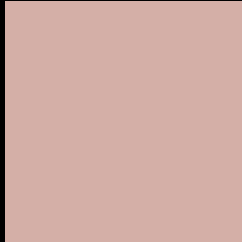
Large Text (above 18pt) WCAG AA × Fail

Any Text WCAG AA × Fail

Large Text (above 18pt) WCAG AAA × Fail

Any Text WCAG AAA × Fail

Black Background



This preview shows how the HunterLab color 68.8818, 7.6180, 11.1097 looks on a black background.

Color Contrast Check

Large Text (above 18pt) WCAG AA ✓ Pass

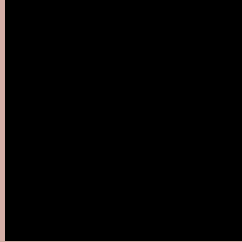
Any Text WCAG AA ✓ Pass

Large Text (above 18pt) WCAG AAA ✓ Pass

Any Text WCAG AAA ✓ Pass

If you want to check with other color combinations, try the [Color Contrast Checker](#).

HunterLab 68.8818, 7.6180, 11.1097 Background



This preview shows how black text looks on a background with the HunterLab color 68.8818, 7.6180, 11.1097.



This preview shows how white text looks on a background with the HunterLab color 68.8818, 7.6180,

Color Blindness Simulation

Color vision deficiency is a very complex topic, and I could not describe the different causes any better than Wikipedia does, so if you want to learn more, you should check out their [article about color blindness](#).

Dichromacy



Original Color

68.8818, 7.6180, 11.1097

Protanopia

69.1046, -3.3545, 9.4670

Deuteranopia

68.9200, 4.8199, 11.1017



Tritanopia

68.8087, 12.7866, 2.5954

Trichromacy



Original Color

68.8818, 7.6180, 11.1097

Protanomaly

68.9569, 0.6406, 9.8033

Deuteranomaly

68.8448, 6.0366, 11.0422

Tritanomaly

68.7662, 10.7986, 5.7917

Monochromacy



Original Color

68.8818, 7.6180, 11.1097

Achromatopsia

69.6527, -3.7165, 3.7844

Achromatomaly

69.1840, 0.3606, 6.5411

CSS Examples

Text

The CSS property to change the color of the text to HunterLab 68.8818, 7.6180, 11.1097 is called "color". The color property can be set on classes, ids or directly on the HTML element.

This example shows how text in the color `rgb(212, 175, 167)` looks like.

```
.text, #text, p{  
    color:rgb(212, 175, 167)  
}
```

If you want to add a text shadow in that color use the text-shadow property, you can generate a text shadow directly with our [CSS Text Shadow Generator](#).

Here you see how black text with a 4 pixel rgb(212, 175, 167) colored shadow looks like.

```
.shadow{ text-shadow: 4px 4px 2px rgb(212, 175, 167) }
```

Border

The CSS property to change the border of an element to HunterLab 68.8818, 7.6180, 11.1097 is called "border". The border property can be set on classes, ids or directly on the HTML element.

This example shows the color as border, it can be applied via the CSS property "border" or "border-color".

```
.border, #border, table{ border:4px solid rgb(212, 175, 167) }
```


If only the border color should be changed use the property `border-color`.

```
.border{ border-color:rgb(212, 175, 167) }
```

If you want to add a box shadow in that color use:

Here you see how a box with a 4 pixel `rgb(212, 175, 167)` colored shadow looks like.

```
.boxshadow{ -moz-box-shadow:4px 4px 4px  
4px rgb(212, 175, 167); -webkit-box-  
shadow:4px 4px 4px 4px rgb(212, 175, 167);  
box-shadow:4px 4px 4px 4px rgb(212, 175,  
167) }
```

Background

The CSS property to change the background color of an element to HunterLab 68.8818, 7.6180, 11.1097 is called "background". The background property can be set on classes, ids or directly on the HTML element.

```
.background, #background, body{  
background: rgb(212, 175, 167) }
```

If only the background color should be changed can be used:

```
.background{ background-color: rgb(212,  
175, 167) }
```

This example shows the color as background, it is applied via the CSS property "background".

To optimize and compress your CSS code, you can use our [online CSS compressor and optimizer](#) based on csstidy. If you want to create a linear or radial gradient as background or border, check our [CSS Gradient Generator](#).

Hey! You found this booklet interesting? Support Converting Colors with the new Membership Option!

The pro membership hides all ads, plus gives you double the colors in the color bucket, and more awesome pro features!

[Learn more, Memberships starting at \\$2.50/m!](#)

**Follow me
on Twitter!**

@ConvertingColor