

Converting Colors

HunterLab(68.9867, -1.2955,
13.9035)

Have a look what the booklet for
HunterLab(68.9867, -1.2955,
13.9035) contains.

HunterLab(68.9867, -1.2955, 13.9035)	3
<i>Conversions</i>	4
<i>Details</i>	6
<i>Harmonies</i>	12
<i>Previews</i>	24
<i>Color Blindness Simulation</i>	28
<i>CSS Examples</i>	31

Color

**HunterLab(68.9867, -1.2955,
13.9035)**

Conversions

Conversions Part 1

Format	Color
Hex	C6B5A0
RGB	198, 181, 160
RGB Percent	78%, 71%, 63%
CMY	0.2235, 0.2902, 0.3725
CMYK	0.00, 0.09, 0.19, 0.22
HSL	33°, 25%, 70%
HSV	33°, 19%, 78%
XYZ	46.1578, 47.5916, 40.0111
YIQ	183.6890, 16.8730, -2.9270

Conversions

Conversions Part 2

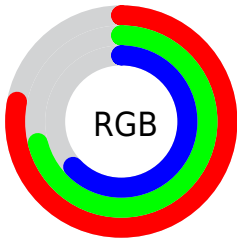
Format	Color
R_{YB}	191, 198, 160
Decimal	13022624
CIE Lab	74.57, 2.64, 12.90
CIE LCh	75, 13.164, 78.449
Yxy	47.5938, 0.3451, 0.3558
Android (android.graphics.Color)	4291212704 (0xFFC6B5A0)
YUV	183.6890, -11.6787, 12.5507
Hunter-Lab	68.9867, -1.2955, 13.9035

Details

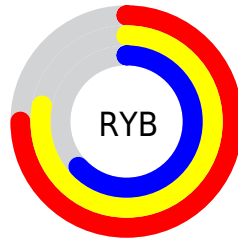
The HunterLab color $68.9867, -1.2955, 13.9035$ is a light color, and the websafe version is hex `CCCCCC`. A complement of this color would be $65.5699, -4.7338, -7.9886$, and the grayscale version is $69.1463, -3.6895, 3.7568$.

A 20% lighter version of the original color is $93.1315, -2.3844, 16.4167$, and $47.3818, -0.3112, 11.4380$ is the 20% darker color. If you saturate the color by 10%, you get $65.9296, 0.5509, 18.2527$, and if you desaturate by 10%, it is $72.1524, -2.8419, 9.0148$.

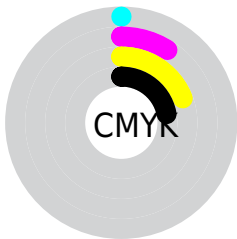
Distribution



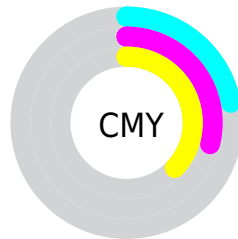
- Red (78%)
- Green (71%)
- Blue (63%)



- Red (75%)
- Yellow (78%)
- Blue (63%)



- Cyan (0%)
- Magenta (9%)
- Yellow (19%)
- Black (22%)



- Cyan (22%)
- Magenta (29%)
- Yellow (37%)

Brightness & Saturation Gradients

These gradients show how the HunterLab color 68.9867, -1.2955, 13.9035 changes by changing the brightness by 10 percent. The first figure shows a shift by +10% for each color and the second figure -10%.

Similar to the brightness gradients but the following saturation gradients show a change of the HunterLab color 68.9867, -1.2955, 13.9035 by changing the saturation by 10% instead.

■ 68.9867, -1.2955,
13.9035

■ 68.9867, -1.2955,
13.9035

194.2111, -7.0137,
25.5171

■ 57.8838, -0.8382,
12.6229

■ 93.0587, -2.3360,
16.4525

■ 47.4487, -0.4231,
11.3279

■ 105.9647, -2.9100,
17.7272

■ 37.7292, -0.0565,
10.0097

119.4175, -3.5179,
19.0060

■ 28.7824, 0.2560,
8.6531

133.3960, -4.1580,
20.2909

■ 20.6818, 0.5063,
7.2334

147.8809, -4.8288,
21.5835

■ 13.5274, 0.6827,
5.7247

162.8551, -5.5291,

■ 7.1113, 1.2355,

22.8848

4.9779

178.3033, -6.2577,
24.1957

0.0000, NaN, NaN

0.0000, NaN, NaN

■ 68.9867, -1.2955,
13.9035

■ 68.9867, -1.2955,
13.9035

■ 65.9296, 0.5509,
18.2527

■ 72.1524, -2.8419,
9.0148

■ 62.9844, 2.7214,
22.0108

■ 75.4148, -4.1014,
3.6301

■ 60.1611, 5.2291,
25.1295

■ 78.7687, -5.0959,
-2.2063

■ 57.4683, 8.0842,
27.5621

■ 82.2078, -5.8446,
-8.4549

■ 54.9148, 11.2888,

■ 85.5746, -7.2030,

29.2690

-12.9441

■ 52.5089, 14.8339,
30.2258

■ 88.4032, -11.7460,
-9.1833

■ 50.2579, 18.6932,
30.4358

■ 91.2823, -16.2353,
-5.4865

■ 48.1617, 22.7937,
30.0194

■ 94.2091, -20.6724,
-1.8516

■ 47.9977, 23.1272,
29.9808

■ 95.2606, -22.2377,
-0.5738

Harmonies

Analogous

The Analogous color harmony consists of three colors that are next to each other on the color wheel.



68.9882, 4.3462, 11.6640



68.9867, -1.2955, 13.9035



68.9882, -7.3919, 13.6085

Triad

The Triadic color harmony groups three colors that are evenly spaced from another and form a triangle on the color wheel.



68.9882, -1.2976, 13.9045



68.9882, -14.5615, 0.0948



68.9882, 5.4020, -4.1416

Complementary

The Complementary color scheme is a pair of colors which are on the opposite of each other on the color wheel.



68.9867, -1.2955, 13.9035



65.5699, -4.7338, -7.9886

Split Complementary

Split-complementary colors differ from the complementary color scheme. The scheme consists of three colors, the original color and two neighbors of the complement color.



68.9882, 0.1024, -7.8070



68.9867, -1.2955, 13.9035



68.9882, -11.3643, -5.2172

Square

The Square scheme is like the rectangle color scheme, but the four colors are evenly spaced on the color wheel.



68.9882, -1.2976, 13.9045



68.9882, -14.9066, 5.9729



68.9882, -6.0399, -8.2171



68.9882, 8.3037, 1.4614

Rectangle

The Rectangle color scheme consists of four colors that form a rectangle on the color wheel.



68.9867, -1.2955, 13.9035



68.9882, -10.8942, 12.0071



68.9882, -6.0399, -8.2171



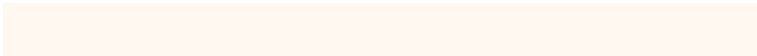
68.9882, 3.8335, -5.6615

Sweetspot

The Sweet Spot groups the original color and five complimentary colors.



68.9882, -1.2976, 13.9045



97.3472, -4.3409, 9.8416



63.5030, 12.0030, 0.4557



44.9050, -1.9544, 4.7687

0.0000, NaN, NaN



46.2646, -2.4686, 2.5136

Same Dimension

The Same Dimension uses a secret algorithm to generate beautiful new colors.



68.9882, -1.2976, 13.9045



90.0954, -0.7555, 20.9976



73.9431, -10.3153, 18.7151



34.0479, -1.3294, 4.3046



38.9293, 18.1626, 24.3060



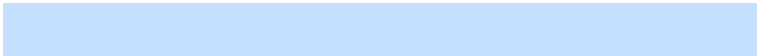
9.2770, 2.2867, 5.7565

Inverse Universe

The Inverse Universe completely reimagines the original color for something new.



65.5699, -4.7338, -7.9886



84.5902, -6.2666, -14.2970



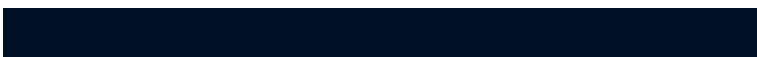
60.7375, 4.3417, -14.6509



33.2497, -2.1366, -0.8000



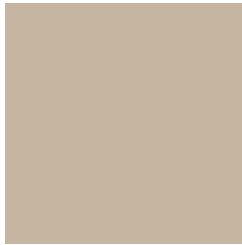
27.2318, 11.4093, -58.6667



7.0368, 0.3355, -9.5196

Previews

White Background



This preview shows how the HunterLab color 68.9867, -1.2955, 13.9035 looks on a white background.

Color Contrast Check

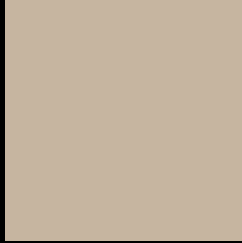
Large Text (above 18pt) WCAG AA × Fail

Any Text WCAG AA × Fail

Large Text (above 18pt) WCAG AAA × Fail

Any Text WCAG AAA × Fail

Black Background



This preview shows how the HunterLab color 68.9867, -1.2955, 13.9035 looks on a black background.

Color Contrast Check

Large Text (above 18pt) WCAG AA ✓ Pass

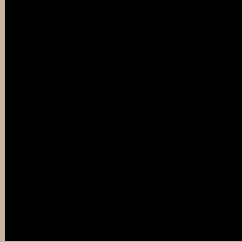
Any Text WCAG AA ✓ Pass

Large Text (above 18pt) WCAG AAA ✓ Pass

Any Text WCAG AAA ✓ Pass

If you want to check with other color combinations, try the [Color Contrast Checker](#).

HunterLab 68.9867, -1.2955, 13.9035 Background



This preview shows how black text looks on a background with the HunterLab color 68.9867, -1.2955, 13.9035.



This preview shows how white text looks on a background with the HunterLab color 68.9867, -1.2955,

Color Blindness Simulation

Color vision deficiency is a very complex topic, and I could not describe the different causes any better than Wikipedia does, so if you want to learn more, you should check out their [article about color blindness](#).

Dichromacy



Original Color

68.9867, -1.2955, 13.9035

Protanopia

69.0266, -4.1574, 13.4990

Deuteranopia

68.9730, 4.6833, 13.5983



Tritanopia

69.0786, 6.6942, 0.8710

Trichromacy



Original Color

68.9867, -1.2955, 13.9035

Protanomaly

68.9191, -2.9992, 13.4079

Deuteranomaly

68.8427, 2.7650, 13.4295

Tritanomaly

68.9297, 4.0479, 5.8614

Monochromacy



Original Color

68.9867, -1.2955, 13.9035

Achromatopsia

69.2330, -3.6941, 3.7616

Achromatomaly

69.1238, -3.0638, 7.7525

CSS Examples

Text

The CSS property to change the color of the text to HunterLab 68.9867, -1.2955, 13.9035 is called "color". The color property can be set on classes, ids or directly on the HTML element.

This example shows how text in the color `rgb(198, 181, 160)` looks like.

```
.text, #text, p{  
    color:rgb(198, 181, 160)  
}
```

If you want to add a text shadow in that color use the text-shadow property, you can generate a text shadow directly with our [CSS Text Shadow Generator](#).

Here you see how black text with a 4 pixel rgb(198, 181, 160) colored shadow looks like.

```
.shadow{ text-shadow: 4px 4px 2px rgb(198, 181, 160) }
```

Border

The CSS property to change the border of an element to HunterLab 68.9867, -1.2955, 13.9035 is called "border". The border property can be set on classes, ids or directly on the HTML element.

This example shows the color as border, it can be applied via the CSS property "border" or "border-color".

```
.border, #border, table{ border:4px solid rgb(198, 181, 160) }
```


If only the border color should be changed use the property `border-color`.

```
.border{ border-color:rgb(198, 181, 160) }
```

If you want to add a box shadow in that color use:

Here you see how a box with a 4 pixel `rgb(198, 181, 160)` colored shadow looks like.

```
.boxshadow{ -moz-box-shadow:4px 4px 4px  
4px rgb(198, 181, 160); -webkit-box-  
shadow:4px 4px 4px 4px rgb(198, 181, 160);  
box-shadow:4px 4px 4px 4px rgb(198, 181,  
160) }
```

Background

The CSS property to change the background color of an element to HunterLab 68.9867, -1.2955, 13.9035 is called "background". The background property can be set on classes, ids or directly on the HTML element.

```
.background, #background, body{  
background: rgb(198, 181, 160) }
```

If only the background color should be changed can be used:

```
.background{ background-color: rgb(198,  
181, 160) }
```

This example shows the color as background, it is applied via the CSS property "background".

To optimize and compress your CSS code, you can use our [online CSS compressor and optimizer](#) based on csstidy. If you want to create a linear or radial gradient as background or border, check our [CSS Gradient Generator](#).

Hey! You found this booklet interesting? Support Converting Colors with the new Membership Option!

The pro membership hides all ads, plus gives you double the colors in the color bucket, and more awesome pro features!

[Learn more, Memberships starting at \\$2.50/m!](#)

**Follow me
on Twitter!**

@ConvertingColor