

Converting Colors

HunterLab(69.0231, 1.2234,
8.5924)

Have a look what the booklet for
HunterLab(69.0231, 1.2234, 8.5924)
contains.

HunterLab(69.0401, 1.0910, 8.6095)	3
<i>Conversions</i>	4
<i>Details</i>	6
<i>Harmonies</i>	12
<i>Previews</i>	24
<i>Color Blindness Simulation</i>	28
<i>CSS Examples</i>	31

Color

**HunterLab(69.0401, 1.0910,
8.6095)**

Conversions

Conversions Part 1

Format	Color
Hex	C6B4AD
RGB	198, 180, 173
RGB Percent	78%, 71%, 68%
CMY	0.2235, 0.2941, 0.3216
CMYK	0.00, 0.09, 0.13, 0.22
HSL	17°, 18%, 73%
HSV	17°, 13%, 78%
XYZ	47.1527, 47.6654, 46.2502
YIQ	184.5840, 12.9750, 1.6390

Conversions

Conversions Part 2

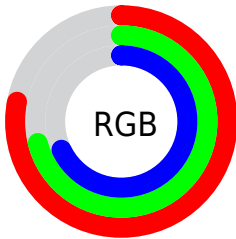
Format	Color
RYB	198, 183, 173
Decimal	13022381
CIELab	74.61, 5.24, 5.89
CIElCh	75, 7.882, 48.345
Yxy	47.6675, 0.3343, 0.3379
Android (android.graphics.Color)	4291212461 (0xFFC6B4AD)
YUV	184.5840, -5.7109, 11.7658
Hunter-Lab	69.0401, 1.0910, 8.6095

Details

The HunterLab color $69.0401, 1.0910, 8.6095$ is a light color, and the websafe version is hex `CCCCCC`. A complement of this color would be $70.8674, -8.0099, -1.1704$, and the grayscale version is $69.4987, -3.7083, 3.7760$.

A 20% lighter version of the original color is $93.1946, 0.1718, 10.7331$, and $47.4221, 1.8617, 6.6376$ is the 20% darker color. If you saturate the color by 10%, you get $64.4163, 5.4461, 11.9695$, and if you desaturate by 10%, it is $73.8551, -2.9839, 5.0478$.

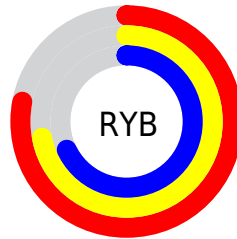
Distribution



Red (78%)

Green (71%)

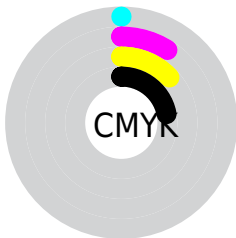
Blue (68%)



Red (78%)

Yellow (72%)

Blue (68%)

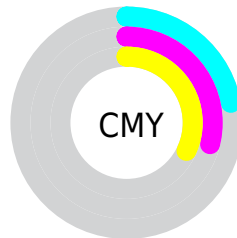


Cyan (0%)

Magenta (9%)

Yellow (13%)

Black (22%)



Cyan (22%)

Magenta (29%)

Yellow (32%)

Brightness & Saturation Gradients

These gradients show how the HunterLab color 69.0401, 1.0910, 8.6095 changes by changing the brightness by 10 percent. The first figure shows a shift by +10% for each color and the second figure -10%.

Similar to the brightness gradients but the following saturation gradients show a change of the HunterLab color 69.0401, 1.0910, 8.6095 by changing the saturation by 10% instead.

■ 69.0401, 1.0910,
8.6095

■ 69.0401, 1.0910,
8.6095

194.2865, -3.6781,
17.5574

■ 57.9341, 1.4185,
7.7088

■ 93.1177, 0.2912,
10.4670

■ 47.4959, 1.6958,
6.8228

106.0263, -0.1704,
11.4230

■ 37.7729, 1.9151,
5.9503

119.4816, -0.6703,
12.3979

■ 28.8223, 2.0683,
5.0872

133.4625, -1.2063,
13.3919

■ 20.7175, 2.1442,
4.2262

147.9497, -1.7767,
14.4049

■ 13.5584, 2.1255,
3.3529

162.9262, -2.3797,

■ 7.1476, 2.8119,

15.4369

3.8043

178.3765, -3.0139,
16.4878

0.0000, NaN, NaN

0.0000, NaN, NaN

■ 69.0401, 1.0910,
8.6095

■ 69.0401, 1.0910,
8.6095

■ 64.4163, 5.4461,
11.9695

■ 73.8551, -2.9839,
5.0478

■ 60.0037, 10.1108,
15.0809

■ 78.8359, -6.7998,
1.3153

■ 55.8327, 15.0978,
17.8890

■ 83.9668, -10.3861,
-2.5606

■ 51.9370, 20.4039,
20.3250

■ 89.2329, -13.7692,
-6.5594

■ 48.3550, 25.9961,

■ 94.0155, -20.3827,

22.3074

-2.0884

■ 45.1290, 31.7954,
23.7472

■ 95.2606, -22.2377,
-0.5738

■ 42.3027, 37.6593,
24.5622

■ 39.9166, 43.3697,
24.7063

■ 38.4488, 47.2809,
24.5197

Harmonies

Analogous

The Analogous color harmony consists of three colors that are next to each other on the color wheel.



69.0416, 3.1729, 5.8477



69.0401, 1.0910, 8.6095



69.0416, -2.2492, 10.0436

Triad

The Triadic color harmony groups three colors that are evenly spaced from another and form a triangle on the color wheel.



69.0416, 1.0890, 8.6106



69.0416, -10.4962, 5.1070



69.0416, -1.4415, -2.9562

Complementary

The Complementary color scheme is a pair of colors which are on the opposite of each other on the color wheel.



69.0401, 1.0910, 8.6095



70.8674, -8.0099, -1.1704

Split Complementary

Split-complementary colors differ from the complementary color scheme. The scheme consists of three colors, the original color and two neighbors of the complement color.



69.0416, -5.1143, -3.1802



69.0401, 1.0910, 8.6095



69.0416, -10.2903, 1.6011

Square

The Square scheme is like the rectangle color scheme, but the four colors are evenly spaced on the color wheel.



69.0416, 1.0890, 8.6106



69.0416, -8.9063, 8.0929



69.0416, -8.3378, -1.4743



69.0416, 1.6909, -0.8773

Rectangle

The Rectangle color scheme consists of four colors that form a rectangle on the color wheel.



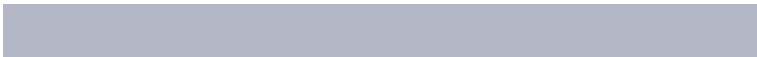
69.0401, 1.0910, 8.6095



69.0416, -4.7137, 10.1047



69.0416, -8.3378, -1.4743



69.0416, -2.6554, -3.2548

Sweetspot

The Sweet Spot groups the original color and five complimentary colors.



69.0416, 1.0890, 8.6106



97.3472, -3.2153, 7.4119



67.5794, 7.6577, -1.6373



44.8084, -1.3001, 3.5993

0.0000, NaN, NaN



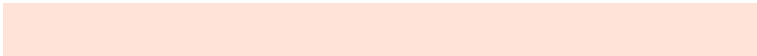
46.2646, -2.4686, 2.5136

Same Dimension

The Same Dimension uses a secret algorithm to generate beautiful new colors.



69.0416, 1.0890, 8.6106



90.2497, 2.9184, 12.6482



72.6608, -5.0175, 12.4249



33.3357, -0.1232, 3.5310



31.2088, 37.5342, 19.8878



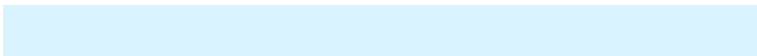
7.6603, 5.8344, 4.8224

Inverse Universe

The Inverse Universe completely reimagines the original color for something new.



70.8674, -8.0099, -1.1704



93.1697, -11.6420, -2.9981



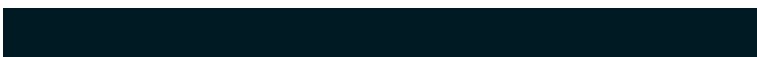
67.1829, -1.9570, -5.7862



33.9791, -3.3282, 0.0847



39.3524, -9.6905, -28.2681



9.2253, -3.0522, -4.9420

Previews

White Background



This preview shows how the HunterLab color 69.0401, 1.0910, 8.6095 looks on a white background.

Color Contrast Check

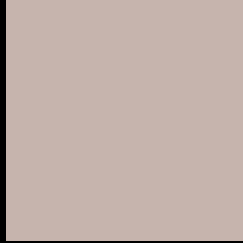
Large Text (above 18pt) WCAG AA × Fail

Any Text WCAG AA × Fail

Large Text (above 18pt) WCAG AAA × Fail

Any Text WCAG AAA × Fail

Black Background



This preview shows how the HunterLab color 69.0401, 1.0910, 8.6095 looks on a black background.

Color Contrast Check

Large Text (above 18pt) WCAG AA ✓ Pass

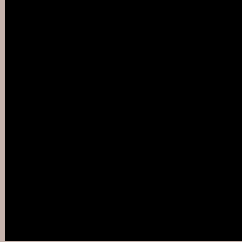
Any Text WCAG AA ✓ Pass

Large Text (above 18pt) WCAG AAA ✓ Pass

Any Text WCAG AAA ✓ Pass

If you want to check with other color combinations, try the [Color Contrast Checker](#).

HunterLab 69.0401, 1.0910, 8.6095 Background



This preview shows how black text looks on a background with the HunterLab color 69.0401, 1.0910, 8.6095.



This preview shows how white text looks on a background with the HunterLab color 69.0401, 1.0910,

8.6095.

Color Blindness Simulation

Color vision deficiency is a very complex topic, and I could not describe the different causes any better than Wikipedia does, so if you want to learn more, you should check out their [article about color blindness](#).

Dichromacy



Original Color

69.0401, 1.0910, 8.6095

Protanopia

69.1238, -3.0638, 7.7525

Deuteranopia

68.9053, 5.1565, 8.0929



Tritanopia

68.9095, 6.1945, 0.1607

Trichromacy



Original Color

69.0401, 1.0910, 8.6095

Protanomaly

69.0785, -1.7482, 8.1652

Deuteranomaly

68.8864, 3.6138, 8.0448

Tritanomaly

68.8793, 4.1774, 3.4821

Monochromacy



Original Color

69.0401, 1.0910, 8.6095

Achromatopsia

69.6527, -3.7165, 3.7844

Achromatomaly

69.3904, -1.7930, 5.3739

CSS Examples

Text

The CSS property to change the color of the text to HunterLab 69.0401, 1.0910, 8.6095 is called "color". The color property can be set on classes, ids or directly on the HTML element.

This example shows how text in the color `rgb(198, 180, 173)` looks like.

```
.text, #text, p{  
    color:rgb(198, 180, 173)  
}
```

If you want to add a text shadow in that color use the text-shadow property, you can generate a text shadow directly with our [CSS Text Shadow Generator](#).

Here you see how black text with a 4 pixel rgb(198, 180, 173) colored shadow looks like.

```
.shadow{ text-shadow: 4px 4px 2px rgb(198, 180, 173) }
```

Border

The CSS property to change the border of an element to HunterLab 69.0401, 1.0910, 8.6095 is called "border". The border property can be set on classes, ids or directly on the HTML element.

This example shows the color as border, it can be applied via the CSS property "border" or "border-color".

```
.border, #border, table{ border:4px solid rgb(198, 180, 173) }
```


If only the border color should be changed use the property border-color.

```
.border{ border-color:rgb(198, 180, 173) }
```

If you want to add a box shadow in that color use:

Here you see how a box with a 4 pixel rgb(198, 180, 173) colored shadow looks like.

```
.boxshadow{ -moz-box-shadow:4px 4px 4px  
4px rgb(198, 180, 173); -webkit-box-  
shadow:4px 4px 4px 4px rgb(198, 180, 173);  
box-shadow:4px 4px 4px 4px rgb(198, 180,  
173) }
```

Background

The CSS property to change the background color of an element to HunterLab 69.0401, 1.0910, 8.6095 is called "background". The background property can be set on classes, ids or directly on the HTML element.

```
.background, #background, body{  
background: rgb(198, 180, 173) }
```

If only the background color should be changed can be used:

```
.background{ background-color: rgb(198,  
180, 173) }
```

This example shows the color as background, it is applied via the CSS property "background".

To optimize and compress your CSS code, you can use our [online CSS compressor and optimizer](#) based on csstidy. If you want to create a linear or radial gradient as background or border, check our [CSS Gradient Generator](#).

Hey! You found this booklet interesting? Support Converting Colors with the new Membership Option!

The pro membership hides all ads, plus gives you double the colors in the color bucket, and more awesome pro features!

[Learn more, Memberships starting at \\$2.50/m!](#)

**Follow me
on Twitter!**

@ConvertingColor