

Converting Colors

HunterLab(69.0249, 8.5574,
6.2844)

Have a look what the booklet for
HunterLab(69.0249, 8.5574, 6.2844)
contains.

HunterLab(68.9753, 8.5429, 6.4466)	3
<i>Conversions</i>	4
<i>Details</i>	6
<i>Harmonies</i>	12
<i>Previews</i>	24
<i>Color Blindness Simulation</i>	28
<i>CSS Examples</i>	31

Color

**HunterLab(68.9753, 8.5429,
6.4466)**

Conversions

Conversions Part 1

Format	Color
Hex	D2AFB2
RGB	210, 175, 178
RGB Percent	82%, 69%, 70%
CMY	0.1765, 0.3137, 0.3020
CMYK	0.00, 0.17, 0.15, 0.18
HSL	355°, 28%, 75%
HSV	355°, 17%, 82%
XYZ	49.9442, 47.5759, 48.6702
YIQ	185.8070, 19.8970, 8.3530

Conversions

Conversions Part 2

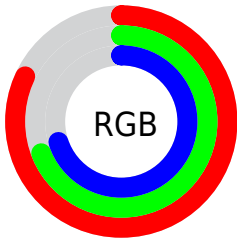
Format	Color
R_{YB}	210, 175, 178
Decimal	13807538
CIE _{Lab}	74.56, 13.14, 3.21
CIE _{LCh}	75, 13.531, 13.738
Yxy	47.5781, 0.3416, 0.3254
Android (android.graphics.Color)	4291997618 (0xFFD2AFB2)
YUV	185.8070, -3.8489, 21.2173
Hunter-Lab	68.9753, 8.5429, 6.4466

Details

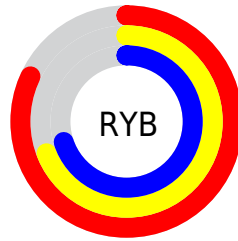
The HunterLab color $68.9753, 8.5429, 6.4466$ is a light color, and the websafe version is hex $CC9999$. A complement of this color would be $77.2744, -15.1355, 2.0561$, and the grayscale version is $70.0028, -3.7352, 3.8034$.

A 20% lighter version of the original color is $91.8435, 3.8265, 6.4094$, and $47.2951, 8.4884, 4.9689$ is the 20% darker color. If you saturate the color by 10%, you get $62.6983, 16.6135, 7.9938$, and if you desaturate by 10%, it is $75.6468, 0.7517, 5.1290$.

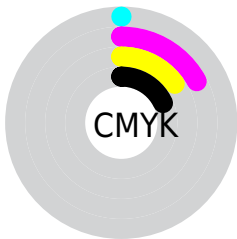
Distribution



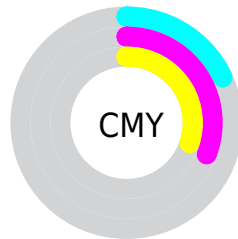
- Red (82%)
- Green (69%)
- Blue (70%)



- Red (82%)
- Yellow (69%)
- Blue (70%)



- Cyan (0%)
- Magenta (17%)
- Yellow (15%)
- Black (18%)





- Cyan (18%)
- Magenta (31%)
- Yellow (30%)

Brightness & Saturation Gradients


These gradients show how the HunterLab color 68.9753, 8.5429, 6.4466 changes by changing the brightness by 10 percent. The first figure shows a shift by +10% for each color and the second figure -10%.


Similar to the brightness gradients but the following saturation gradients show a change of the HunterLab color 68.9753, 8.5429, 6.4466 by changing the saturation by 10% instead.


 68.9753, 8.5429,
6.4466

 68.9753, 8.5429,
6.4466


194.1951, 6.6048,
14.4128

 57.8730, 8.4868,
5.6838


 93.0461, 8.4566,
8.0517

 47.4387, 8.3592,
4.9455


105.9515, 8.3296,
8.8907

 37.7199, 8.1480,
4.2330


119.4038, 8.1518,
9.7538

 28.7739, 7.8402,
3.5457

133.3818, 7.9265,
10.6404

 20.6742, 7.4174,
2.8821

147.8662, 7.6568,
11.5501

 13.5207, 6.8535,
2.2376

162.8400, 7.3452,

 7.1035, 7.6837,

12.4824

2.2618

178.2876, 6.9938,
13.4368

0.0000, NaN, NaN

0.0000, NaN, NaN

■ 68.9753, 8.5429,
6.4466

■ 68.9753, 8.5429,
6.4466

■ 62.6983, 16.6135,
7.9938

■ 75.6468, 0.7517,
5.1290

■ 56.8856, 24.9319,
9.7915

■ 82.6493, -6.7593,
4.0079

■ 51.6303, 33.3741,
11.8484

■ 89.9373, -14.0185,
3.0554

■ 47.0405, 41.6808,
14.1353

■ 96.1403, -19.0480,
0.6618

■ 43.2339, 49.4058,

■ 96.1466, -19.0121,

16.5608

0.5712

■ 40.3178, 55.9250,
18.9526

■ 38.3552, 60.5841,
21.0741

■ 37.3113, 63.0305,
22.6878

■ 37.0747, 63.6092,
23.0451

Harmonies

Analogous

The Analogous color harmony consists of three colors that are next to each other on the color wheel.



68.9769, 8.3925, 0.4332



68.9753, 8.5429, 6.4466



68.9769, 5.3312, 11.2887

Triad

The Triadic color harmony groups three colors that are evenly spaced from another and form a triangle on the color wheel.



68.9769, 8.5407, 6.4478



68.9769, -11.8982, 11.6066



68.9769, -7.0593, -8.3099

Complementary

The Complementary color scheme is a pair of colors which are on the opposite of each other on the color wheel.



68.9753, 8.5429, 6.4466



77.2744, -15.1355, 2.0561

Split Complementary

Split-complementary colors differ from the complementary color scheme. The scheme consists of three colors, the original color and two neighbors of the complement color.



68.9769, -12.2590, -4.7387



68.9753, 8.5429, 6.4466



68.9769, -14.9831, 6.9186

Square

The Square scheme is like the rectangle color scheme, but the four colors are evenly spaced on the color wheel.



68.9769, 8.5407, 6.4478



68.9769, -6.5506, 14.0806



68.9769, -15.1127, 0.9483



68.9769, -0.7701, -8.4649

Rectangle

The Rectangle color scheme consists of four colors that form a rectangle on the color wheel.



68.9753, 8.5429, 6.4466



68.9769, 1.7841, 13.3509



68.9769, -15.1127, 0.9483



68.9769, -8.9871, -7.4556

Sweetspot

The Sweet Spot groups the original color and five complimentary colors.



68.9769, 8.5407, 6.4478



95.6059, -0.5914, 6.1487



69.6482, 12.8125, -8.7639



43.9497, 0.0381, 2.8934

0.0000, NaN, NaN



46.2646, -2.4686, 2.5136

Same Dimension

The Same Dimension uses a secret algorithm to generate beautiful new colors.



68.9769, 8.5407, 6.4478



83.0770, 14.1779, 8.6827



72.9340, 0.8921, 11.9849



34.3867, 1.3323, 2.5491



28.9666, 49.7195, 17.8390



6.8918, 11.9135, 3.5923

Inverse Universe

The Inverse Universe completely reimagines the original color for something new.



68.9769, 8.5407, 6.4478



83.0770, 14.1779, 8.6827



72.9717, -7.7074, -4.7113



34.3867, 1.3323, 2.5491



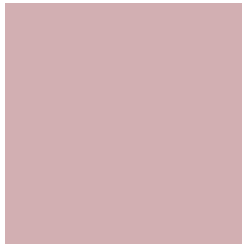
28.9666, 49.7195, 17.8390



6.8918, 11.9135, 3.5923

Previews

White Background



This preview shows how the HunterLab color 68.9753, 8.5429, 6.4466 looks on a white background.

Color Contrast Check

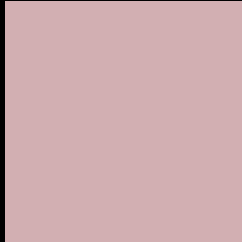
Large Text (above 18pt) WCAG AA × Fail

Any Text WCAG AA × Fail

Large Text (above 18pt) WCAG AAA × Fail

Any Text WCAG AAA × Fail

Black Background



This preview shows how the HunterLab color 68.9753, 8.5429, 6.4466 looks on a black background.

Color Contrast Check

Large Text (above 18pt) WCAG AA ✓ Pass

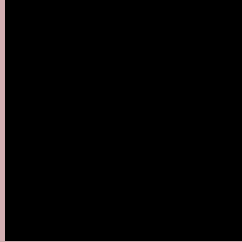
Any Text WCAG AA ✓ Pass

Large Text (above 18pt) WCAG AAA ✓ Pass

Any Text WCAG AAA ✓ Pass

If you want to check with other color combinations, try the [Color Contrast Checker](#).

HunterLab 68.9753, 8.5429, 6.4466 Background



This preview shows how black text looks on a background with the HunterLab color 68.9753, 8.5429, 6.4466.



This preview shows how white text looks on a background with the HunterLab color 68.9753, 8.5429,

6.4466.

Color Blindness Simulation

Color vision deficiency is a very complex topic, and I could not describe the different causes any better than Wikipedia does, so if you want to learn more, you should check out their [article about color blindness](#).

Dichromacy



Original Color

68.9753, 8.5429, 6.4466

Protanopia

69.1442, -2.5847, 4.6123

Deuteranopia

69.2044, 4.9128, 6.6441



Tritanopia

69.0716, 10.8444, 2.3956

Trichromacy



Original Color

68.9753, 8.5429, 6.4466

Protanomaly

68.9788, 1.3445, 4.9523

Deuteranomaly

69.1234, 6.1151, 6.5730

Tritanomaly

68.9795, 10.3588, 3.7087

Monochromacy



Original Color

68.9753, 8.5429, 6.4466

Achromatopsia

70.0729, -3.7389, 3.8072

Achromatomaly

69.6254, 0.6525, 4.7647

CSS Examples

Text

The CSS property to change the color of the text to HunterLab 68.9753, 8.5429, 6.4466 is called "color". The color property can be set on classes, ids or directly on the HTML element.

This example shows how text in the color `rgb(210, 175, 178)` looks like.

```
.text, #text, p{  
    color:rgb(210, 175, 178)  
}
```

If you want to add a text shadow in that color use the text-shadow property, you can generate a text shadow directly with our [CSS Text Shadow Generator](#).

Here you see how black text with a 4 pixel rgb(210, 175, 178) colored shadow looks like.

```
.shadow{ text-shadow: 4px 4px 2px rgb(210, 175, 178) }
```

Border

The CSS property to change the border of an element to HunterLab 68.9753, 8.5429, 6.4466 is called "border". The border property can be set on classes, ids or directly on the HTML element.

This example shows the color as border, it can be applied via the CSS property "border" or "border-color".

```
.border, #border, table{ border:4px solid rgb(210, 175, 178) }
```


If only the border color should be changed use the property `border-color`.

```
.border{ border-color:rgb(210, 175, 178) }
```

If you want to add a box shadow in that color use:

Here you see how a box with a 4 pixel `rgb(210, 175, 178)` colored shadow looks like.

```
.boxshadow{ -moz-box-shadow:4px 4px 4px  
4px rgb(210, 175, 178); -webkit-box-  
shadow:4px 4px 4px 4px rgb(210, 175, 178);  
box-shadow:4px 4px 4px 4px rgb(210, 175,  
178) }
```

Background

The CSS property to change the background color of an element to HunterLab 68.9753, 8.5429, 6.4466 is called "background". The background property can be set on classes, ids or directly on the HTML element.

```
.background, #background, body{  
background: rgb(210, 175, 178) }
```

If only the background color should be changed can be used:

```
.background{ background-color: rgb(210,  
175, 178) }
```

This example shows the color as background, it is applied via the CSS property "background".

To optimize and compress your CSS code, you can use our [online CSS compressor and optimizer](#) based on csstidy. If you want to create a linear or radial gradient as background or border, check our [CSS Gradient Generator](#).

Hey! You found this booklet interesting? Support Converting Colors with the new Membership Option!

The pro membership hides all ads, plus gives you double the colors in the color bucket, and more awesome pro features!

[Learn more, Memberships starting at \\$2.50/m!](#)

**Follow me
on Twitter!**

@ConvertingColor