

Converting Colors

HunterLab(69.1506, 2.9546,
8.7627)

Have a look what the booklet for
HunterLab(69.1506, 2.9546, 8.7627)
contains.

HunterLab(69.1476, 2.9524, 8.7610)	3
<i>Conversions</i>	4
<i>Details</i>	6
<i>Harmonies</i>	12
<i>Previews</i>	24
<i>Color Blindness Simulation</i>	28
<i>CSS Examples</i>	31

Color

**HunterLab(69.1476, 2.9524,
8.7610)**

Conversions

Conversions Part 1

Format	Color
Hex	CAB3AD
RGB	202, 179, 173
RGB Percent	79%, 70%, 68%
CMY	0.2078, 0.2980, 0.3216
CMYK	0.00, 0.11, 0.14, 0.21
HSL	12°, 21%, 74%
HSV	12°, 14%, 79%
XYZ	48.0201, 47.8139, 46.2333
YIQ	185.1930, 15.6340, 3.0100

Conversions

Conversions Part 2

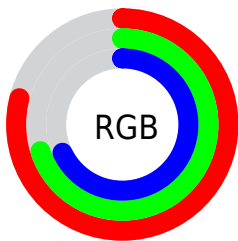
Format	Color
RYB	202, 181, 173
Decimal	13284269
CIELab	74.71, 7.25, 6.07
CIELCh	75, 9.452, 39.952
Yxy	47.8160, 0.3380, 0.3366
Android (android.graphics.Color)	4291474349 (0xFFCAB3AD)
YUV	185.1930, -6.0111, 14.7397
Hunter-Lab	69.1476, 2.9524, 8.7610

Details

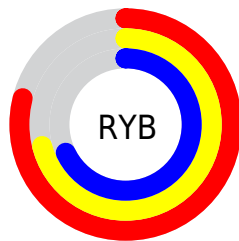
The HunterLab color $69.1476, 2.9524, 8.7610$ is a light color, and the websafe version is hex `CCCCCC`. A complement of this color would be $72.5447, -9.7474, -1.1371$, and the grayscale version is $69.7549, -3.7219, 3.7899$.

A 20% lighter version of the original color is $92.8860, 0.7025, 10.3971$, and $47.5374, 3.6415, 6.7948$ is the 20% darker color. If you saturate the color by 10%, you get $64.0622, 8.2213, 11.8064$, and if you desaturate by 10%, it is $74.4691, -2.0215, 5.5899$.

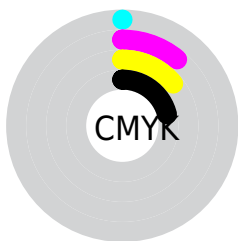
Distribution



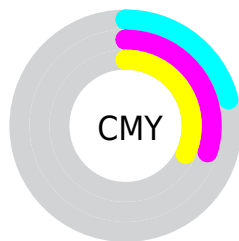
- Red (79%)
- Green (70%)
- Blue (68%)



- Red (79%)
- Yellow (71%)
- Blue (68%)



- Cyan (0%)
- Magenta (11%)
- Yellow (14%)
- Black (21%)



- Cyan (21%)
- Magenta (30%)
- Yellow (32%)

Brightness & Saturation Gradients

These gradients show how the HunterLab color 69.1476, 2.9524, 8.7610 changes by changing the brightness by 10 percent. The first figure shows a shift by +10% for each color and the second figure -10%.

Similar to the brightness gradients but the following saturation gradients show a change of the HunterLab color 69.1476, 2.9524, 8.7610 by changing the saturation by 10% instead.

■ 69.1476, 2.9524,
8.7610

■ 69.1476, 2.9524,
8.7610

194.4383, -1.0937,
17.7774

■ 58.0355, 3.1813,
7.8507

■ 93.2365, 2.3354,
10.6361

■ 47.5908, 3.3544,
6.9545

106.1503, 1.9593,
11.6003

■ 37.8608, 3.4625,
6.0709

119.6107, 1.5417,
12.5830

■ 28.9026, 3.4961,
5.1956

133.5964, 1.0850,
13.5844

■ 20.7895, 3.4417,
4.3209

148.0883, 0.5913,
14.6047

■ 13.6209, 3.2788,
3.4320

163.0693, 0.0626,

■ 7.2200, 3.9872,

15.6436

3.8775

178.5240, -0.4996,
16.7013

0.0000, NaN, NaN

0.0000, NaN, NaN

■ 69.1476, 2.9524,
8.7610

■ 69.1476, 2.9524,
8.7610

■ 64.0622, 8.2213,
11.8064

■ 74.4691, -2.0215,
5.5899

■ 59.2425, 13.8109,
14.6830

■ 79.9939, -6.7219,
2.3179

■ 54.7309, 19.7205,
17.3369

■ 85.7001, -11.1810,
-1.0338

■ 50.5756, 25.9182,
19.6942

■ 91.5683, -15.4283,
-4.4514

■ 46.8315, 32.3175,

■ 95.5493, -21.1833,

21.6611

-0.1996

■ 43.5584, 38.7528,
23.1287

■ 40.8149, 44.9613,
23.9931

■ 38.6486, 50.5893,
24.1962

■ 37.6826, 53.3263,
24.1534

Harmonies

Analogous

The Analogous color harmony consists of three colors that are next to each other on the color wheel.



69.1491, 4.8878, 5.1482



69.1476, 2.9524, 8.7610



69.1491, -0.7525, 10.9435

Triad

The Triadic color harmony groups three colors that are evenly spaced from another and form a triangle on the color wheel.



69.1491, 2.9503, 8.7621



69.1491, -11.5057, 6.4813



69.1491, -2.2167, -4.6916

Complementary

The Complementary color scheme is a pair of colors which are on the opposite of each other on the color wheel.



69.1476, 2.9524, 8.7610



72.5447, -9.7474, -1.1371

Split Complementary

Split-complementary colors differ from the complementary color scheme. The scheme consists of three colors, the original color and two neighbors of the complement color.



69.1491, -6.5858, -4.2789



69.1476, 2.9524, 8.7610



69.1491, -11.8754, 2.3505

Square

The Square scheme is like the rectangle color scheme, but the four colors are evenly spaced on the color wheel.



69.1491, 2.9503, 8.7621



69.1491, -9.0724, 9.6852



69.1491, -10.0953, -1.6375



69.1491, 1.8553, -2.7321

Rectangle

The Rectangle color scheme consists of four colors that form a rectangle on the color wheel.



69.1476, 2.9524, 8.7610



69.1491, -3.6863, 11.3781



69.1491, -10.0953, -1.6375



69.1491, -3.7004, -4.8284

Sweetspot

The Sweet Spot groups the original color and five complimentary colors.



69.1491, 2.9503, 8.7621



97.1122, -2.8197, 7.1470



68.1462, 9.8473, -3.3782



44.6795, -1.0826, 3.4546

0.0000, NaN, NaN



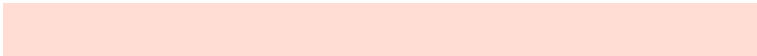
46.2646, -2.4686, 2.5136

Same Dimension

The Same Dimension uses a secret algorithm to generate beautiful new colors.



69.1491, 2.9503, 8.7621



88.0401, 5.7705, 12.5597



73.3805, -4.2674, 13.1978



34.0348, 0.2140, 3.4171



30.4008, 42.2382, 19.4723



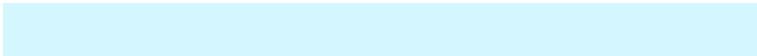
7.6729, 7.3824, 4.8573

Inverse Universe

The Inverse Universe completely reimagines the original color for something new.



72.5447, -9.7474, -1.1371



93.3232, -14.0017, -2.8459



68.1780, -2.6429, -6.6285



35.0960, -3.7501, 0.3243



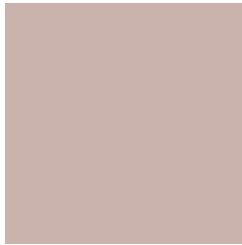
43.6967, -15.0515, -22.1252



10.4258, -4.0928, -4.1961

Previews

White Background



This preview shows how the HunterLab color 69.1476, 2.9524, 8.7610 looks on a white background.

Color Contrast Check

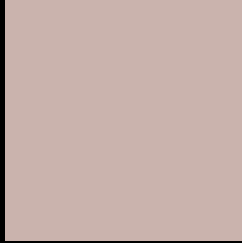
Large Text (above 18pt) WCAG AA × Fail

Any Text WCAG AA × Fail

Large Text (above 18pt) WCAG AAA × Fail

Any Text WCAG AAA × Fail

Black Background



This preview shows how the HunterLab color 69.1476, 2.9524, 8.7610 looks on a black background.

Color Contrast Check

Large Text (above 18pt) WCAG AA ✓ Pass

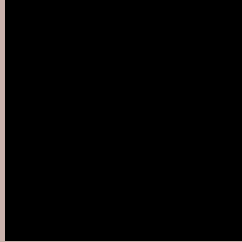
Any Text WCAG AA ✓ Pass

Large Text (above 18pt) WCAG AAA ✓ Pass

Any Text WCAG AAA ✓ Pass

If you want to check with other color combinations, try the [Color Contrast Checker](#).

HunterLab 69.1476, 2.9524, 8.7610 Background



This preview shows how black text looks on a background with the HunterLab color 69.1476, 2.9524, 8.7610.



This preview shows how white text looks on a background with the HunterLab color 69.1476, 2.9524,

8.7610.

Color Blindness Simulation

Color vision deficiency is a very complex topic, and I could not describe the different causes any better than Wikipedia does, so if you want to learn more, you should check out their [article about color blindness](#).

Dichromacy



Original Color

69.1476, 2.9524, 8.7610

Protanopia

69.1238, -3.0638, 7.7525

Deuteranopia

69.2674, 4.8392, 8.9265



Tritanopia

68.9969, 7.8883, 0.7920

Trichromacy



Original Color

69.1476, 2.9524, 8.7610

Protanomaly

69.2685, -1.0935, 8.3880

Deuteranomaly

69.1643, 4.4931, 8.8065

Tritanomaly

68.9938, 6.0394, 3.6500

Monochromacy



Original Color

69.1476, 2.9524, 8.7610

Achromatopsia

69.6527, -3.7165, 3.7844

Achromatomaly

69.4835, -1.4721, 5.4869

CSS Examples

Text

The CSS property to change the color of the text to HunterLab 69.1476, 2.9524, 8.7610 is called "color". The color property can be set on classes, ids or directly on the HTML element.

This example shows how text in the color `rgb(202, 179, 173)` looks like.

```
.text, #text, p{  
    color:rgb(202, 179, 173)  
}
```

If you want to add a text shadow in that color use the text-shadow property, you can generate a text shadow directly with our [CSS Text Shadow Generator](#).

Here you see how black text with a 4 pixel rgb(202, 179, 173) colored shadow looks like.

```
.shadow{ text-shadow: 4px 4px 2px rgb(202, 179, 173) }
```

Border

The CSS property to change the border of an element to HunterLab 69.1476, 2.9524, 8.7610 is called "border". The border property can be set on classes, ids or directly on the HTML element.

This example shows the color as border, it can be applied via the CSS property "border" or "border-color".

```
.border, #border, table{ border:4px solid rgb(202, 179, 173) }
```


If only the border color should be changed use the property `border-color`.

```
.border{ border-color:rgb(202, 179, 173) }
```

If you want to add a box shadow in that color use:

Here you see how a box with a 4 pixel `rgb(202, 179, 173)` colored shadow looks like.

```
.boxshadow{ -moz-box-shadow:4px 4px 4px  
4px rgb(202, 179, 173); -webkit-box-  
shadow:4px 4px 4px 4px rgb(202, 179, 173);  
box-shadow:4px 4px 4px 4px rgb(202, 179,  
173) }
```

Background

The CSS property to change the background color of an element to HunterLab 69.1476, 2.9524, 8.7610 is called "background". The background property can be set on classes, ids or directly on the HTML element.

```
.background, #background, body{  
background: rgb(202, 179, 173) }
```

If only the background color should be changed can be used:

```
.background{ background-color: rgb(202,  
179, 173) }
```

This example shows the color as background, it is applied via the CSS property "background".

To optimize and compress your CSS code, you can use our [online CSS compressor and optimizer](#) based on csstidy. If you want to create a linear or radial gradient as background or border, check our [CSS Gradient Generator](#).

Hey! You found this booklet interesting? Support Converting Colors with the new Membership Option!

The pro membership hides all ads, plus gives you double the colors in the color bucket, and more awesome pro features!

[Learn more, Memberships starting at \\$2.50/m!](#)

**Follow me
on Twitter!**

@ConvertingColor