

Converting Colors

HunterLab(69.2108, 7.9859,
5.7923)

Have a look what the booklet for
HunterLab(69.2108, 7.9859, 5.7923)
contains.

HunterLab(69.2107, 7.9849, 5.7966)	3
<i>Conversions</i>	4
<i>Details</i>	6
<i>Harmonies</i>	12
<i>Previews</i>	24
<i>Color Blindness Simulation</i>	28
<i>CSS Examples</i>	31

Color

**HunterLab(69.2107, 7.9849,
5.7966)**

Conversions

Conversions Part 1

Format	Color
Hex	D1B0B4
RGB	209, 176, 180
RGB Percent	82%, 69%, 71%
CMY	0.1804, 0.3098, 0.2941
CMYK	0.00, 0.16, 0.14, 0.18
HSL	353°, 26%, 75%
HSV	353°, 16%, 82%
XYZ	50.0580, 47.9012, 49.7875
YIQ	186.3230, 18.3840, 8.2400

Conversions

Conversions Part 2

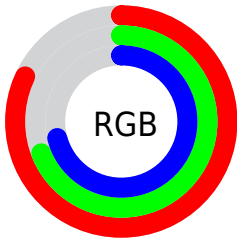
Format	Color
R _Y B	209, 176, 180
Decimal	13742260
CIE Lab	74.76, 12.56, 2.41
CIE LCh	75, 12.792, 10.847
Yxy	47.9034, 0.3388, 0.3242
Android (android.graphics.Color)	4291932340 (0xFFD1B0B4)
YUV	186.3230, -3.1172, 19.8877
Hunter-Lab	69.2107, 7.9849, 5.7966

Details

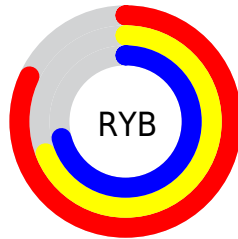
The HunterLab color **69.2107, 7.9849, 5.7966** is a light color, and the websafe version is hex **CC9999**. A complement of this color would be **76.9675, -14.7316, 2.6747**, and the grayscale version is **70.2172, -3.7466, 3.8150**.

A 20% lighter version of the original color is **92.2114, 3.6292, 5.8589**, and **47.5061, 7.9447, 4.3529** is the 20% darker color. If you saturate the color by 10%, you get **62.9513, 16.0799, 7.0386**, and if you desaturate by 10%, it is **75.8545, 0.1513, 4.8095**.

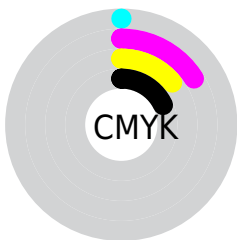
Distribution



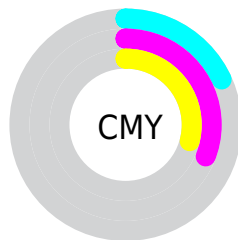
- Red (82%)
- Green (69%)
- Blue (71%)



- Red (82%)
- Yellow (69%)
- Blue (71%)



- Cyan (0%)
- Magenta (16%)
- Yellow (14%)
- Black (18%)





- Cyan (18%)
- Magenta (31%)
- Yellow (29%)

Brightness & Saturation Gradients


These gradients show how the HunterLab color 69.2107, 7.9849, 5.7966 changes by changing the brightness by 10 percent. The first figure shows a shift by +10% for each color and the second figure -10%.


Similar to the brightness gradients but the following saturation gradients show a change of the HunterLab color 69.2107, 7.9849, 5.7966 by changing the saturation by 10% instead.

 69.2107, 7.9849,
5.7966

 69.2107, 7.9849,
5.7966


194.5274, 5.8332,
13.4761

 58.0951, 7.9578,
5.0739


 93.3062, 7.8448,
7.3281

 47.6465, 7.8607,
4.3785


106.2231, 7.6925,
8.1330

 37.9124, 7.6820,
3.7123

119.6864, 7.4904,
8.9634

 28.9498, 7.4088,
3.0758

133.6750, 7.2417,
9.8187

 20.8318, 7.0234,
2.4690

148.1696, 6.9493,
10.6982

 13.6576, 6.5001,
1.8902

163.1533, 6.6157,

 7.2622, 7.1502,

11.6013

1.7693

178.6106, 6.2430,
12.5274

0.0000, NaN, NaN

0.0000, NaN, NaN

■ 69.2107, 7.9849,
5.7966

■ 69.2107, 7.9849,
5.7966

■ 62.9513, 16.0799,
7.0386

■ 75.8545, 0.1513,
4.8095

■ 57.1432, 24.4053,
8.5671

■ 82.8211, -7.4192,
4.0371

■ 51.8765, 32.8421,
10.4067

■ 90.0668, -14.7526,
3.4471

■ 47.2563, 41.1429,
12.5510

■ 96.0196, -19.5743,
1.1968

■ 43.3976, 48.8799,

■ 96.0705, -19.2880,

14.9370

0.4733

■ 40.4081, 55.4480,
17.4195

■ 38.3560, 60.1967,
19.7720

■ 37.2245, 62.7242,
21.7380

■ 36.9147, 63.4114,
22.3511

Harmonies

Analogous

The Analogous color harmony consists of three colors that are next to each other on the color wheel.



69.2122, 7.5233, 0.0753



69.2107, 7.9849, 5.7966



69.2122, 5.2335, 10.5573

Triad

The Triadic color harmony groups three colors that are evenly spaced from another and form a triangle on the color wheel.



69.2122, 7.9827, 5.7978



69.2122, -11.0700, 11.5539



69.2122, -7.4353, -7.4027

Complementary

The Complementary color scheme is a pair of colors which are on the opposite of each other on the color wheel.



69.2107, 7.9849, 5.7966



76.9675, -14.7316, 2.6747

Split Complementary

Split-complementary colors differ from the complementary color scheme. The scheme consists of three colors, the original color and two neighbors of the complement color.



69.2122, -12.1959, -3.7887



69.2107, 7.9849, 5.7966



69.2122, -14.2446, 7.2667

Square

The Square scheme is like the rectangle color scheme, but the four colors are evenly spaced on the color wheel.



69.2122, 7.9827, 5.7978



69.2122, -5.8509, 13.6877



69.2122, -14.6496, 1.6736



69.2122, -1.5158, -7.8807

Rectangle

The Rectangle color scheme consists of four colors that form a rectangle on the color wheel.



69.2107, 7.9849, 5.7966



69.2122, 2.0041, 12.6694



69.2122, -14.6496, 1.6736



69.2122, -9.2188, -6.5008

Sweetspot

The Sweet Spot groups the original color and five complimentary colors.



69.2122, 7.9827, 5.7978



95.6203, -0.5135, 5.9439



69.6983, 11.4630, -8.1654



43.9573, 0.0790, 2.7856

0.0000, NaN, NaN



46.2646, -2.4686, 2.5136

Same Dimension

The Same Dimension uses a secret algorithm to generate beautiful new colors.



69.2122, 7.9827, 5.7978



83.9300, 13.4394, 7.7560



72.5953, 1.1544, 11.2049



34.3965, 1.3853, 2.4087



28.9994, 49.8413, 17.3519



6.9148, 11.9984, 3.2543

Inverse Universe

The Inverse Universe completely reimagines the original color for something new.



69.2122, 7.9827, 5.7978



83.9300, 13.4394, 7.7560



73.2955, -8.0623, -3.7724



34.3965, 1.3853, 2.4087



28.9994, 49.8413, 17.3519



6.9148, 11.9984, 3.2543

Previews

White Background



This preview shows how the HunterLab color 69.2107, 7.9849, 5.7966 looks on a white background.

Color Contrast Check

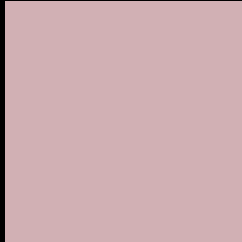
Large Text (above 18pt) WCAG AA × Fail

Any Text WCAG AA × Fail

Large Text (above 18pt) WCAG AAA × Fail

Any Text WCAG AAA × Fail

Black Background



This preview shows how the HunterLab color 69.2107, 7.9849, 5.7966 looks on a black background.

Color Contrast Check

Large Text (above 18pt) WCAG AA ✓ Pass

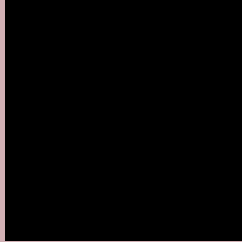
Any Text WCAG AA ✓ Pass

Large Text (above 18pt) WCAG AAA ✓ Pass

Any Text WCAG AAA ✓ Pass

If you want to check with other color combinations, try the [Color Contrast Checker](#).

HunterLab 69.2107, 7.9849, 5.7966 Background



This preview shows how black text looks on a background with the HunterLab color 69.2107, 7.9849, 5.7966.



This preview shows how white text looks on a background with the HunterLab color 69.2107, 7.9849,

5.7966.

Color Blindness Simulation

Color vision deficiency is a very complex topic, and I could not describe the different causes any better than Wikipedia does, so if you want to learn more, you should check out their [article about color blindness](#).

Dichromacy



Original Color

69.2107, 7.9849, 5.7966

Protanopia

69.2044, -2.2560, 3.7531

Deuteranopia

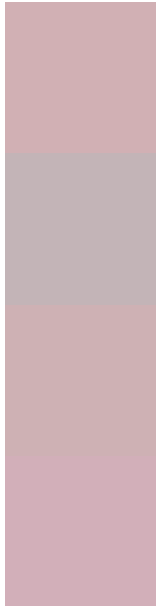
69.2629, 5.2256, 5.8082



Tritanopia

69.2766, 10.1365, 2.1469

Trichromacy



Original Color

69.2107, 7.9849, 5.7966

Protanomaly

69.0388, 1.6683, 4.0969

Deuteranomaly

69.1819, 6.4273, 5.7361

Tritanomaly

69.1841, 9.6480, 3.4649

Monochromacy



Original Color

69.2107, 7.9849, 5.7966

Achromatopsia

70.0729, -3.7389, 3.8072

Achromatomaly

69.5600, 0.4892, 4.2189

CSS Examples

Text

The CSS property to change the color of the text to HunterLab 69.2107, 7.9849, 5.7966 is called "color". The color property can be set on classes, ids or directly on the HTML element.

This example shows how text in the color `rgb(209, 176, 180)` looks like.

```
.text, #text, p{  
    color:rgb(209, 176, 180)  
}
```

If you want to add a text shadow in that color use the text-shadow property, you can generate a text shadow directly with our [CSS Text Shadow Generator](#).

Here you see how black text with a 4 pixel rgb(209, 176, 180) colored shadow looks like.

```
.shadow{ text-shadow: 4px 4px 2px rgb(209, 176, 180) }
```

Border

The CSS property to change the border of an element to HunterLab 69.2107, 7.9849, 5.7966 is called "border". The border property can be set on classes, ids or directly on the HTML element.

This example shows the color as border, it can be applied via the CSS property "border" or "border-color".

```
.border, #border, table{ border:4px solid rgb(209, 176, 180) }
```


If only the border color should be changed use the property `border-color`.

```
.border{ border-color:rgb(209, 176, 180) }
```

If you want to add a box shadow in that color use:

Here you see how a box with a 4 pixel `rgb(209, 176, 180)` colored shadow looks like.

```
.boxshadow{ -moz-box-shadow:4px 4px 4px  
4px rgb(209, 176, 180); -webkit-box-  
shadow:4px 4px 4px 4px rgb(209, 176, 180);  
box-shadow:4px 4px 4px 4px rgb(209, 176,  
180) }
```

Background

The CSS property to change the background color of an element to HunterLab 69.2107, 7.9849, 5.7966 is called "background". The background property can be set on classes, ids or directly on the HTML element.

```
.background, #background, body{  
background: rgb(209, 176, 180) }
```

If only the background color should be changed can be used:

```
.background{ background-color: rgb(209,  
176, 180) }
```

This example shows the color as background, it is applied via the CSS property "background".

To optimize and compress your CSS code, you can use our [online CSS compressor and optimizer](#) based on csstidy. If you want to create a linear or radial gradient as background or border, check our [CSS Gradient Generator](#).

Hey! You found this booklet interesting? Support Converting Colors with the new Membership Option!

The pro membership hides all ads, plus gives you double the colors in the color bucket, and more awesome pro features!

[Learn more, Memberships starting at \\$2.50/m!](#)

**Follow me
on Twitter!**

@ConvertingColor