

Converting Colors

HunterLab(69.2396, 4.6900,
9.3259)

Have a look what the booklet for
HunterLab(69.2396, 4.6900, 9.3259)
contains.

HunterLab(69.2396, 4.6900, 9.3259)	3
<i>Conversions</i>	4
<i>Details</i>	6
<i>Harmonies</i>	12
<i>Previews</i>	24
<i>Color Blindness Simulation</i>	28
<i>CSS Examples</i>	31

Color

**HunterLab(69.2396, 4.6900,
9.3259)**

Conversions

Conversions Part 1

Format	Color
Hex	CEB2AC
RGB	206, 178, 172
RGB Percent	81%, 70%, 67%
CMY	0.1922, 0.3019, 0.3255
CMYK	0.00, 0.14, 0.17, 0.19
HSL	11°, 26%, 74%
HSV	11°, 17%, 81%
XYZ	48.8204, 47.9412, 45.7103
YIQ	185.6880, 18.6140, 4.0700

Conversions

Conversions Part 2

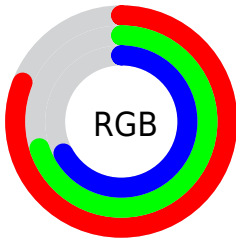
Format	Color
R _Y B	206, 179, 172
Decimal	13546156
CIE Lab	74.79, 9.10, 6.78
CIE LCh	75, 11.345, 36.680
Yxy	47.9434, 0.3427, 0.3365
Android (android.graphics.Color)	4291736236 (0xFFCEB2AC)
YUV	185.6880, -6.7482, 17.8136
Hunter-Lab	69.2396, 4.6900, 9.3259

Details

The HunterLab color **69.2396, 4.6900, 9.3259** is a light color, and the websafe version is hex **CC9999**. A complement of this color would be **73.8473, -11.2570, -1.5748**, and the grayscale version is **69.9650, -3.7332, 3.8013**.

A 20% lighter version of the original color is **92.5482, 1.0718, 10.4893**, and **47.5422, 4.9818, 7.2224** is the 20% darker color. If you saturate the color by 10%, you get **63.9328, 10.4760, 12.2677**, and if you desaturate by 10%, it is **74.8132, -0.7868, 6.2865**.

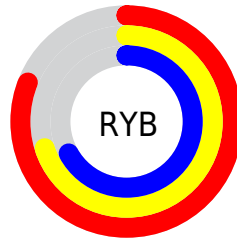
Distribution



Red (81%)

Green (70%)

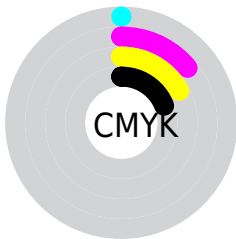
Blue (67%)



Red (81%)

Yellow (70%)

Blue (67%)

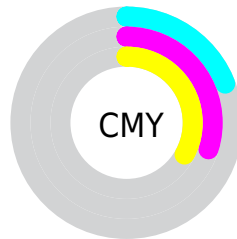


Cyan (0%)

Magenta (14%)

Yellow (17%)

Black (19%)



Cyan (19%)


Magenta (30%)


Yellow (33%)

Brightness & Saturation Gradients


These gradients show how the HunterLab color 69.2396, 4.6900, 9.3259 changes by changing the brightness by 10 percent. The first figure shows a shift by +10% for each color and the second figure -10%.


Similar to the brightness gradients but the following saturation gradients show a change of the HunterLab color 69.2396, 4.6900, 9.3259 by changing the saturation by 10% instead.


 69.2396, 4.6900,
9.3259

 69.2396, 4.6900,
9.3259


194.5681, 1.3064,
18.6067

 58.1223, 4.8290,
8.3783


 93.3381, 4.2400,
11.2692

 47.6720, 4.9072,
7.4421


106.2564, 3.9423,
12.2649

 37.9361, 4.9143,
6.5151

119.7211, 3.6000,
13.2777

 28.9714, 4.8396,
5.5920

133.7110, 3.2161,
14.3081

 20.8512, 4.6678,
4.6635

148.2069, 2.7928,
15.3561

 13.6745, 4.3761,
3.7120

163.1918, 2.3322,

 7.2814, 5.0562,

16.4219

4.2543

178.6502, 1.8362,
17.5055

0.0000, NaN, NaN

0.0000, NaN, NaN

■ 69.2396, 4.6900,
9.3259

■ 69.2396, 4.6900,
9.3259

■ 63.9328, 10.4760,
12.2677

■ 74.8132, -0.7868,
6.2865

■ 58.9288, 16.5913,
15.0687

■ 80.6153, -5.9747,
3.1731

■ 54.2782, 23.0210,
17.6722

■ 86.6200, -10.9071,
0.0045

■ 50.0387, 29.7053,
19.9976

■ 92.8045, -15.6156,
-3.2076

■ 46.2755, 36.5096,

■ 95.8446, -20.1081,

21.9400

0.1821

■ 43.0573, 43.1981,
23.3774

■ 40.4479, 49.4231,
24.1969

■ 38.4907, 54.7557,
24.3579

■ 37.9560, 56.3023,
24.3739

Harmonies

Analogous

The Analogous color harmony consists of three colors that are next to each other on the color wheel.



69.2412, 6.7446, 4.8900



69.2396, 4.6900, 9.3259



69.2412, 0.3931, 12.1134

Triad

The Triadic color harmony groups three colors that are evenly spaced from another and form a triangle on the color wheel.



69.2412, 4.6878, 9.3270



69.2412, -12.8332, 7.5073



69.2412, -2.5058, -6.5960

Complementary

The Complementary color scheme is a pair of colors which are on the opposite of each other on the color wheel.



69.2396, 4.6900, 9.3259



73.8473, -11.2570, -1.5748

Split Complementary

Split-complementary colors differ from the complementary color scheme. The scheme consists of three colors, the original color and two neighbors of the complement color.



69.2412, -7.6967, -5.7636



69.2396, 4.6900, 9.3259



69.2412, -13.5567, 2.6289

Square

The Square scheme is like the rectangle color scheme, but the four colors are evenly spaced on the color wheel.



69.2412, 4.6878, 9.3270



69.2412, -9.6963, 11.1195



69.2412, -11.7033, -2.2917



69.2412, 2.5112, -4.4877

Rectangle

The Rectangle color scheme consists of four colors that form a rectangle on the color wheel.



69.2396, 4.6900, 9.3259



69.2412, -3.1055, 12.7869



69.2412, -11.7033, -2.2917



69.2412, -4.2890, -6.6531

Sweetspot

The Sweet Spot groups the original color and five complimentary colors.



69.2412, 4.6878, 9.3270



96.2753, -1.9756, 7.4354



68.4203, 12.4590, -5.1510



44.3019, -0.6922, 3.5693

0.0000, NaN, NaN



46.2646, -2.4686, 2.5136

Same Dimension

The Same Dimension uses a secret algorithm to generate beautiful new colors.



69.2412, 4.6878, 9.3270



85.5634, 8.6770, 13.2905



74.1498, -3.7622, 14.4162



33.9539, 0.3536, 3.3278



29.9532, 43.6427, 19.2211



7.5064, 7.8349, 4.7626

Inverse Universe

The Inverse Universe completely reimagines the original color for something new.



73.8473, -11.2570, -1.5748



92.7175, -16.1216, -3.6488



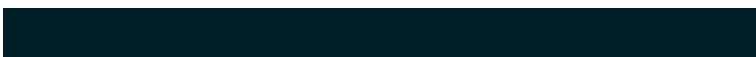
68.7257, -2.9851, -8.0796



35.1808, -3.8864, 0.4254



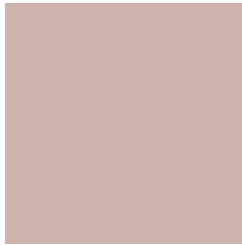
45.2640, -17.1717, -19.5073



10.7127, -4.4687, -3.7433

Previews

White Background



This preview shows how the HunterLab color 69.2396, 4.6900, 9.3259 looks on a white background.

Color Contrast Check

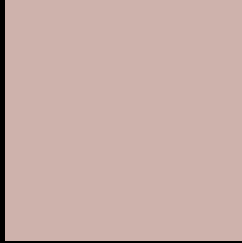
Large Text (above 18pt) WCAG AA × Fail

Any Text WCAG AA × Fail

Large Text (above 18pt) WCAG AAA × Fail

Any Text WCAG AAA × Fail

Black Background



This preview shows how the HunterLab color 69.2396, 4.6900, 9.3259 looks on a black background.

Color Contrast Check

Large Text (above 18pt) WCAG AA ✓ Pass

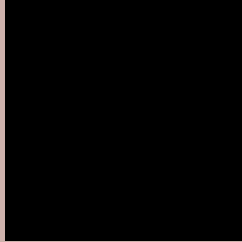
Any Text WCAG AA ✓ Pass

Large Text (above 18pt) WCAG AAA ✓ Pass

Any Text WCAG AAA ✓ Pass

If you want to check with other color combinations, try the [Color Contrast Checker](#).

HunterLab 69.2396, 4.6900, 9.3259 Background



This preview shows how black text looks on a background with the HunterLab color 69.2396, 4.6900, 9.3259.



This preview shows how white text looks on a background with the HunterLab color 69.2396, 4.6900,

9.3259.

Color Blindness Simulation

Color vision deficiency is a very complex topic, and I could not describe the different causes any better than Wikipedia does, so if you want to learn more, you should check out their [article about color blindness](#).

Dichromacy



Original Color

69.2396, 4.6900, 9.3259

Protanopia

69.2165, -2.7421, 7.8619

Deuteranopia

69.2396, 4.6900, 9.3259



Tritanopia

69.0970, 9.6097, 1.4345

Trichromacy



Original Color

69.2396, 4.6900, 9.3259

Protanomaly

69.1661, 0.0705, 8.2945

Deuteranomaly

69.2396, 4.6900, 9.3259

Tritanomaly

69.0905, 7.7655, 4.2643

Monochromacy



Original Color

69.2396, 4.6900, 9.3259

Achromatopsia

70.0729, -3.7389, 3.8072

Achromatomaly

69.6711, -0.8264, 5.7142

CSS Examples

Text

The CSS property to change the color of the text to HunterLab 69.2396, 4.6900, 9.3259 is called "color". The color property can be set on classes, ids or directly on the HTML element.

This example shows how text in the color `rgb(206, 178, 172)` looks like.

```
.text, #text, p{  
    color:rgb(206, 178, 172)  
}
```

If you want to add a text shadow in that color use the text-shadow property, you can generate a text shadow directly with our [CSS Text Shadow Generator](#).

Here you see how black text with a 4 pixel rgb(206, 178, 172) colored shadow looks like.

```
.shadow{ text-shadow: 4px 4px 2px rgb(206, 178, 172) }
```

Border

The CSS property to change the border of an element to HunterLab 69.2396, 4.6900, 9.3259 is called "border".

The border property can be set on classes, ids or directly on the HTML element.

This example shows the color as border, it can be applied via the CSS property "border" or "border-color".

```
.border, #border, table{ border:4px solid rgb(206, 178, 172) }
```


If only the border color should be changed use the property `border-color`.

```
.border{ border-color:rgb(206, 178, 172) }
```

If you want to add a box shadow in that color use:

Here you see how a box with a 4 pixel `rgb(206, 178, 172)` colored shadow looks like.

```
.boxshadow{ -moz-box-shadow:4px 4px 4px  
4px rgb(206, 178, 172); -webkit-box-  
shadow:4px 4px 4px 4px rgb(206, 178, 172);  
box-shadow:4px 4px 4px 4px rgb(206, 178,  
172) }
```

Background

The CSS property to change the background color of an element to HunterLab 69.2396, 4.6900, 9.3259 is called "background". The background property can be set on classes, ids or directly on the HTML element.

```
.background, #background, body{  
background: rgb(206, 178, 172) }
```

If only the background color should be changed can be used:

```
.background{ background-color: rgb(206,  
178, 172) }
```

This example shows the color as background, it is applied via the CSS property "background".

To optimize and compress your CSS code, you can use our [online CSS compressor and optimizer](#) based on csstidy. If you want to create a linear or radial gradient as background or border, check our [CSS Gradient Generator](#).

Hey! You found this booklet interesting? Support Converting Colors with the new Membership Option!

The pro membership hides all ads, plus gives you double the colors in the color bucket, and more awesome pro features!

[Learn more, Memberships starting at \\$2.50/m!](#)

**Follow me
on Twitter!**

@ConvertingColor