

Converting Colors

HunterLab(69.3769, 9.0997,
9.2006)

Have a look what the booklet for
HunterLab(69.3769, 9.0997, 9.2006)
contains.

HunterLab(69.2627, 9.2050, 8.9978)	3
<i>Conversions</i>	4
<i>Details</i>	6
<i>Harmonies</i>	12
<i>Previews</i>	24
<i>Color Blindness Simulation</i>	28
<i>CSS Examples</i>	31

Color

**HunterLab(69.2627, 9.2050,
8.9978)**

Conversions

Conversions Part 1

Format	Color
Hex	D6AFAD
RGB	214, 175, 173
RGB Percent	84%, 69%, 68%
CMY	0.1608, 0.3137, 0.3216
CMYK	0.00, 0.18, 0.19, 0.16
HSL	3°, 33%, 76%
HSV	3°, 19%, 84%
XYZ	50.6043, 47.9732, 46.1277
YIQ	186.4330, 23.8860, 7.6460

Conversions

Conversions Part 2

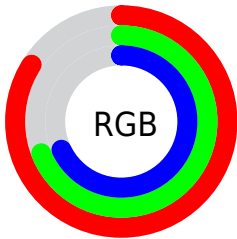
Format	Color
R_{YB}	214, 175, 173
Decimal	14069677
CIE _{Lab}	74.81, 13.83, 6.36
CIE _{LCh}	75, 15.222, 24.686
Yxy	47.9754, 0.3497, 0.3315
Android (android.graphics.Color)	4292259757 (0xFFD6AFAD)
YUV	186.4330, -6.6225, 24.1763
Hunter-Lab	69.2627, 9.2050, 8.9978

Details

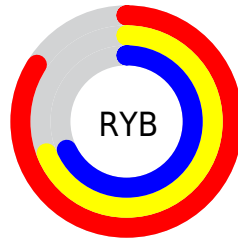
The HunterLab color **69.2627, 9.2050, 8.9978** is a light color, and the websafe version is hex **CC9999**. A complement of this color would be **77.9902, -15.3756, -0.5765**, and the grayscale version is **70.2761, -3.7498, 3.8182**.

A 20% lighter version of the original color is **91.6587, 2.8307, 9.0508**, and **47.6135, 9.3080, 6.9769** is the 20% darker color. If you saturate the color by 10%, you get **63.1482, 16.7762, 11.4751**, and if you desaturate by 10%, it is **75.7633, 1.9671, 6.5928**.

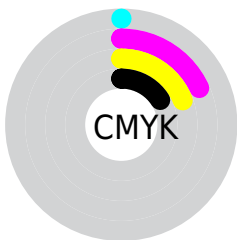
Distribution



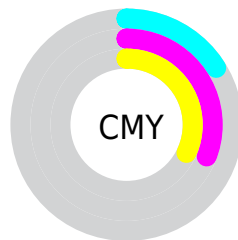
- Red (84%)
- Green (69%)
- Blue (68%)



- Red (84%)
- Yellow (69%)
- Blue (68%)



- Cyan (0%)
- Magenta (18%)
- Yellow (19%)
- Black (16%)





- Cyan (16%)
- Magenta (31%)
- Yellow (32%)

Brightness & Saturation Gradients


These gradients show how the HunterLab color 69.2627, 9.2050, 8.9978 changes by changing the brightness by 10 percent. The first figure shows a shift by +10% for each color and the second figure -10%.

Similar to the brightness gradients but the following saturation gradients show a change of the HunterLab color 69.2627, 9.2050, 8.9978 by changing the saturation by 10% instead.


 69.2627, 9.2050,
8.9978

 69.2627, 9.2050,
8.9978


194.6008, 7.4972,
18.1228

 58.1441, 9.1182,
8.0723

 93.3637, 9.1760,
10.9009

 47.6924, 8.9585,
7.1597


106.2831, 9.0762,
11.8780

 37.9550, 8.7137,
6.2584


119.7489, 8.9245,
12.8731

 28.9887, 8.3703,
5.3637

133.7398, 8.7246,
13.8864

 20.8667, 7.9100,
4.4673

148.2367, 8.4795,
14.9180

 13.6879, 7.3066,
3.5532

163.2226, 8.1917,

 7.2968, 7.8696,

15.9680

4.0087

178.6820, 7.8637,
17.0363

0.0000, NaN, NaN

0.0000, NaN, NaN

■ 69.2627, 9.2050,
8.9978

■ 69.2627, 9.2050,
8.9978

■ 63.1482, 16.7762,
11.4751

■ 75.7633, 1.9671,
6.5928

■ 57.4855, 24.6637,
13.9990

■ 82.5886, -4.9454,
4.2621

■ 52.3621, 32.7667,
16.5202

■ 89.6951, -11.5674,
2.0040

■ 47.8785, 40.8638,
18.9453

■ 96.4553, -17.8958,
0.9677

■ 44.1425, 48.5634,

21.1275

■ 41.2529, 55.3034,
22.8776

■ 39.2690, 60.4608,
24.0160

■ 38.1672, 63.5738,
24.5511

■ 38.1095, 63.7319,
24.5987

Harmonies

Analogous

The Analogous color harmony consists of three colors that are next to each other on the color wheel.



69.2643, 10.4868, 2.5516



69.2627, 9.2050, 8.9978



69.2643, 4.4050, 13.5903

Triad

The Triadic color harmony groups three colors that are evenly spaced from another and form a triangle on the color wheel.



69.2643, 9.2027, 8.9989



69.2643, -14.5354, 10.8933



69.2643, -4.9646, -10.5131

Complementary

The Complementary color scheme is a pair of colors which are on the opposite of each other on the color wheel.



69.2627, 9.2050, 8.9978



77.9902, -15.3756, -0.5765

Split Complementary

Split-complementary colors differ from the complementary color scheme. The scheme consists of three colors, the original color and two neighbors of the complement color.



69.2643, -11.4476, -7.7384



69.2627, 9.2050, 8.9978



69.2643, -16.8286, 4.9672

Square

The Square scheme is like the rectangle color scheme, but the four colors are evenly spaced on the color wheel.



69.2643, 9.2027, 8.9989



69.2643, -9.3329, 14.6041



69.2643, -15.7213, -1.9008



69.2643, 2.1199, -9.1572

Rectangle

The Rectangle color scheme consists of four colors that form a rectangle on the color wheel.



69.2627, 9.2050, 8.9978



69.2643, -0.0414, 15.2063



69.2643, -15.7213, -1.9008



69.2643, -7.2832, -10.0248

Sweetspot

The Sweet Spot groups the original color and five complimentary colors.



69.2643, 9.2027, 8.9989



94.9303, -0.2537, 7.1492



69.9781, 16.9122, -9.7136



43.6676, 0.1425, 3.3949

0.0000, NaN, NaN



46.2646, -2.4686, 2.5136

Same Dimension

The Same Dimension uses a secret algorithm to generate beautiful new colors.



69.2643, 9.2027, 8.9989



81.3684, 14.9328, 12.1939



75.0229, -1.0006, 14.9664



35.3796, 1.0078, 3.1150



29.7025, 49.2978, 19.1656



7.5312, 11.3277, 4.8390

Inverse Universe

The Inverse Universe completely reimagines the original color for something new.



77.9902, -15.3756, -0.5765



94.1845, -21.2445, -1.8923



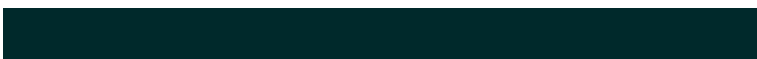
71.7619, -5.5650, -8.4402



37.4152, -4.7073, 0.8865



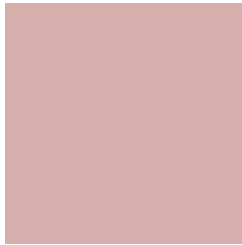
53.8064, -26.6685, -9.6837



13.3375, -6.6993, -2.2089

Previews

White Background



This preview shows how the HunterLab color 69.2627, 9.2050, 8.9978 looks on a white background.

Color Contrast Check

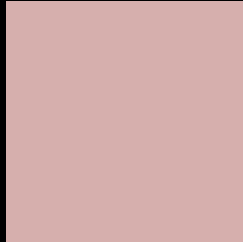
Large Text (above 18pt) WCAG AA × Fail

Any Text WCAG AA × Fail

Large Text (above 18pt) WCAG AAA × Fail

Any Text WCAG AAA × Fail

Black Background



This preview shows how the HunterLab color 69.2627, 9.2050, 8.9978 looks on a black background.

Color Contrast Check

Large Text (above 18pt) WCAG AA ✓ Pass

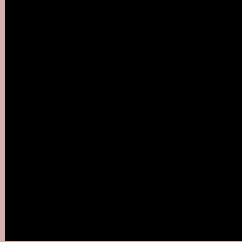
Any Text WCAG AA ✓ Pass

Large Text (above 18pt) WCAG AAA ✓ Pass

Any Text WCAG AAA ✓ Pass

If you want to check with other color combinations, try the [Color Contrast Checker](#).

HunterLab 69.2627, 9.2050, 8.9978 Background



This preview shows how black text looks on a background with the HunterLab color 69.2627, 9.2050, 8.9978.



This preview shows how white text looks on a background with the HunterLab color 69.2627, 9.2050,

8.9978.

Color Blindness Simulation

Color vision deficiency is a very complex topic, and I could not describe the different causes any better than Wikipedia does, so if you want to learn more, you should check out their [article about color blindness](#).

Dichromacy



Original Color

69.2627, 9.2050, 8.9978

Protanopia

69.5084, -3.0924, 6.8491

Deuteranopia

69.3432, 5.0376, 9.4458



Tritanopia

69.3046, 12.9705, 3.1906

Trichromacy



Original Color

69.2627, 9.2050, 8.9978

Protanomaly

69.4177, 1.0435, 7.7113

Deuteranomaly

69.3718, 6.6026, 9.5046

Tritanomaly

69.3220, 11.2982, 5.5240

Monochromacy



Original Color

69.2627, 9.2050, 8.9978

Achromatopsia

70.0729, -3.7389, 3.8072

Achromatomaly

69.6619, 0.6587, 5.7297

CSS Examples

Text

The CSS property to change the color of the text to HunterLab 69.2627, 9.2050, 8.9978 is called "color". The color property can be set on classes, ids or directly on the HTML element.

This example shows how text in the color `rgb(214, 175, 173)` looks like.

```
.text, #text, p{  
    color:rgb(214, 175, 173)  
}
```

If you want to add a text shadow in that color use the text-shadow property, you can generate a text shadow directly with our [CSS Text Shadow Generator](#).

Here you see how black text with a 4 pixel rgb(214, 175, 173) colored shadow looks like.

```
.shadow{ text-shadow: 4px 4px 2px rgb(214, 175, 173) }
```

Border

The CSS property to change the border of an element to HunterLab 69.2627, 9.2050, 8.9978 is called "border". The border property can be set on classes, ids or directly on the HTML element.

This example shows the color as border, it can be applied via the CSS property "border" or "border-color".

```
.border, #border, table{ border:4px solid rgb(214, 175, 173) }
```


If only the border color should be changed use the property `border-color`.

```
.border{ border-color:rgb(214, 175, 173) }
```

If you want to add a box shadow in that color use:

Here you see how a box with a 4 pixel `rgb(214, 175, 173)` colored shadow looks like.

```
.boxshadow{ -moz-box-shadow:4px 4px 4px  
4px rgb(214, 175, 173); -webkit-box-  
shadow:4px 4px 4px 4px rgb(214, 175, 173);  
box-shadow:4px 4px 4px 4px rgb(214, 175,  
173) }
```

Background

The CSS property to change the background color of an element to HunterLab 69.2627, 9.2050, 8.9978 is called "background". The background property can be set on classes, ids or directly on the HTML element.

```
.background, #background, body{  
background: rgb(214, 175, 173) }
```

If only the background color should be changed can be used:

```
.background{ background-color: rgb(214,  
175, 173) }
```

This example shows the color as background, it is applied via the CSS property "background".

To optimize and compress your CSS code, you can use our [online CSS compressor and optimizer](#) based on csstidy. If you want to create a linear or radial gradient as background or border, check our [CSS Gradient Generator](#).

Hey! You found this booklet interesting? Support Converting Colors with the new Membership Option!

The pro membership hides all ads, plus gives you double the colors in the color bucket, and more awesome pro features!

[Learn more, Memberships starting at \\$2.50/m!](#)

**Follow me
on Twitter!**

@ConvertingColor