

Converting Colors

HunterLab(69.4248, 6.5188,
5.7373)

Have a look what the booklet for
HunterLab(69.4248, 6.5188, 5.7373)
contains.

HunterLab(69.6006, 6.4128, 5.7598)	3
<i>Conversions</i>	4
<i>Details</i>	6
<i>Harmonies</i>	12
<i>Previews</i>	24
<i>Color Blindness Simulation</i>	28
<i>CSS Examples</i>	31

Color

**HunterLab(69.6006, 6.4128,
5.7598)**

Conversions

Conversions Part 1

Format	Color
Hex	CFB2B5
RGB	207, 178, 181
RGB Percent	81%, 70%, 71%
CMY	0.1882, 0.3019, 0.2902
CMYK	0.00, 0.14, 0.13, 0.19
HSL	354°, 23%, 75%
HSV	354°, 14%, 81%
XYZ	49.9931, 48.4424, 50.4315
YIQ	187.0130, 16.3210, 7.0810

Conversions

Conversions Part 2

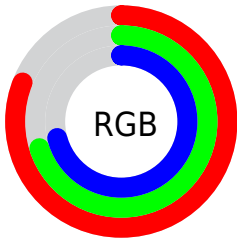
Format	Color
R_{YB}	207, 178, 181
Decimal	13611701
CIE _{Lab}	75.10, 10.92, 2.33
CIE _{LCh}	75, 11.167, 12.058
Yxy	48.4446, 0.3358, 0.3254
Android (android.graphics.Color)	4291801781 (0xFFCFB2B5)
YUV	187.0130, -2.9644, 17.5286
Hunter-Lab	69.6006, 6.4128, 5.7598

Details

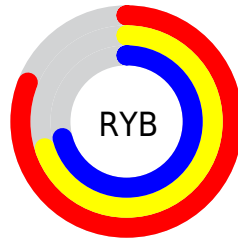
The HunterLab color $69.6006, 6.4128, 5.7598$ is a light color, and the websafe version is hex $CC9999$. A complement of this color would be $76.4536, -13.3815, 2.5719$, and the grayscale version is $70.5075, -3.7621, 3.8308$.

A 20% lighter version of the original color is $92.8548, 2.7286, 6.1054$, and $47.8551, 6.4406, 4.2990$ is the 20% darker color. If you saturate the color by 10%, you get $63.3302, 14.3214, 7.0803$, and if you desaturate by 10%, it is $76.2408, -1.2280, 4.6713$.

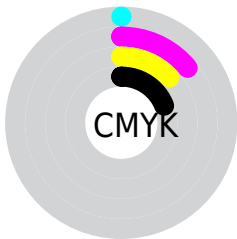
Distribution



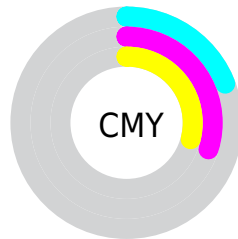
- Red (81%)
- Green (70%)
- Blue (71%)



- Red (81%)
- Yellow (70%)
- Blue (71%)



- Cyan (0%)
- Magenta (14%)
- Yellow (13%)
- Black (19%)



- Cyan (19%)
- Magenta (30%)
- Yellow (29%)

Brightness & Saturation Gradients

These gradients show how the HunterLab color 69.6006, 6.4128, 5.7598 changes by changing the brightness by 10 percent. The first figure shows a shift by +10% for each color and the second figure -10%.

Similar to the brightness gradients but the following saturation gradients show a change of the HunterLab color 69.6006, 6.4128, 5.7598 by changing the saturation by 10% instead.

■ 69.6006, 6.4128,
5.7598

■ 69.6006, 6.4128,
5.7598

195.0773, 3.6661,
13.4201

■ 58.4629, 6.4661,
5.0398

■ 93.7369, 6.1229,
7.2863

■ 47.9909, 6.4540,
4.3474

106.6727, 5.9003,
8.0889

■ 38.2316, 6.3654,
3.6845

120.1543, 5.6305,
8.9171

■ 29.2416, 6.1886,
3.0517

134.1604, 5.3164,
9.7703

■ 21.0934, 5.9070,
2.4491

148.6720, 4.9608,
10.6478

■ 13.8851, 5.4964,
1.8754

163.6720, 4.5659,

■ 7.5173, 5.9287,

11.5490

1.6955

179.1452, 4.1338,
12.4732

0.0000, NaN, NaN

0.0000, NaN, NaN

■ 69.6006, 6.4128,
5.7598

■ 69.6006, 6.4128,
5.7598

■ 63.3302, 14.3214,
7.0803

■ 76.2408, -1.2280,
4.6713

■ 57.4932, 22.4790,
8.6602

■ 83.1918, -8.6059,
3.7788

■ 52.1758, 30.7882,
10.5207

■ 90.4123, -15.7498,
3.0531

■ 47.4798, 39.0342,
12.6538

■ 95.9195, -19.8359,
0.2787

■ 43.5185, 46.8306,

14.9992

■ 40.4021, 53.6056,
17.4192

■ 38.2083, 58.7046,
19.6981

■ 36.9398, 61.6521,
21.5890

■ 36.4981, 62.6565,
22.4033

Harmonies

Analogous

The Analogous color harmony consists of three colors that are next to each other on the color wheel.



69.6022, 6.1282, 0.7714



69.6006, 6.4128, 5.7598



69.6022, 3.9211, 9.9073

Triad

The Triadic color harmony groups three colors that are evenly spaced from another and form a triangle on the color wheel.



69.6022, 6.4107, 5.7610



69.6022, -10.3382, 10.5348



69.6022, -6.7938, -5.9590

Complementary

The Complementary color scheme is a pair of colors which are on the opposite of each other on the color wheel.



69.6006, 6.4128, 5.7598



76.4536, -13.3815, 2.5719

Split Complementary

Split-complementary colors differ from the complementary color scheme. The scheme consists of three colors, the original color and two neighbors of the complement color.



69.6022, -11.0403, -2.9415



69.6006, 6.4128, 5.7598



69.6022, -13.0446, 6.6766

Square

The Square scheme is like the rectangle color scheme, but the four colors are evenly spaced on the color wheel.



69.6022, 6.4107, 5.7610



69.6022, -5.8095, 12.5238



69.6022, -13.2978, 1.7568



69.6022, -1.6005, -6.2497

Rectangle

The Rectangle color scheme consists of four colors that form a rectangle on the color wheel.



69.6006, 6.4128, 5.7598



69.6022, 1.0661, 11.7340



69.6022, -13.2978, 1.7568



69.6022, -8.3753, -5.2201

Sweetspot

The Sweet Spot groups the original color and five complimentary colors.



69.6022, 6.4107, 5.7610



96.4825, -1.5159, 5.9188



70.0937, 9.7109, -6.5718



44.3345, -0.3662, 2.7826

0.0000, NaN, NaN



46.2646, -2.4686, 2.5136

Same Dimension

The Same Dimension uses a secret algorithm to generate beautiful new colors.



69.6022, 6.4107, 5.7610



85.5200, 11.2811, 7.7937



72.7509, 0.2528, 10.5048



34.3916, 1.3587, 2.4791



28.9819, 49.7763, 17.6119



6.9033, 11.9559, 3.4233

Inverse Universe

The Inverse Universe completely reimagines the original color for something new.



69.6022, 6.4107, 5.7610



85.5200, 11.2811, 7.7937



73.0746, -7.3621, -2.9970



34.3916, 1.3587, 2.4791



28.9819, 49.7763, 17.6119



6.9033, 11.9559, 3.4233

Previews

White Background



This preview shows how the HunterLab color 69.6006, 6.4128, 5.7598 looks on a white background.

Color Contrast Check

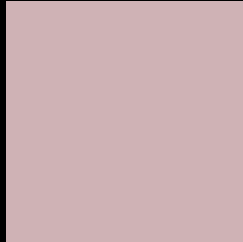
Large Text (above 18pt) WCAG AA × Fail

Any Text WCAG AA × Fail

Large Text (above 18pt) WCAG AAA × Fail

Any Text WCAG AAA × Fail

Black Background



This preview shows how the HunterLab color 69.6006, 6.4128, 5.7598 looks on a black background.

Color Contrast Check

Large Text (above 18pt) WCAG AA ✓ Pass

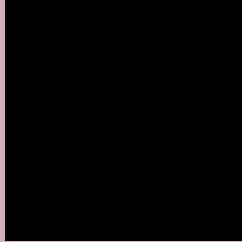
Any Text WCAG AA ✓ Pass

Large Text (above 18pt) WCAG AAA ✓ Pass

Any Text WCAG AAA ✓ Pass

If you want to check with other color combinations, try the [Color Contrast Checker](#).

HunterLab 69.6006, 6.4128, 5.7598 Background



This preview shows how black text looks on a background with the HunterLab color 69.6006, 6.4128, 5.7598.



This preview shows how white text looks on a background with the HunterLab color 69.6006, 6.4128,

5.7598.

Color Blindness Simulation

Color vision deficiency is a very complex topic, and I could not describe the different causes any better than Wikipedia does, so if you want to learn more, you should check out their [article about color blindness](#).

Dichromacy



Original Color

69.6006, 6.4128, 5.7598

Protanopia

69.5938, -2.4421, 4.2072

Deuteranopia

69.5800, 4.8690, 5.7091



Tritanopia

69.6935, 8.7320, 1.6545

Trichromacy



Original Color

69.6006, 6.4128, 5.7598

Protanomaly

69.6254, 0.6525, 4.7647

Deuteranomaly

69.6818, 5.2103, 5.8322

Tritanomaly

69.6003, 8.2377, 2.9823

Monochromacy



Original Color

69.6006, 6.4128, 5.7598

Achromatopsia

70.4935, -3.7614, 3.8300

Achromatomaly

70.1806, -0.3606, 4.4622

CSS Examples

Text

The CSS property to change the color of the text to HunterLab 69.6006, 6.4128, 5.7598 is called "color". The color property can be set on classes, ids or directly on the HTML element.

This example shows how text in the color `rgb(207, 178, 181)` looks like.

```
.text, #text, p{  
    color:rgb(207, 178, 181)  
}
```

If you want to add a text shadow in that color use the text-shadow property, you can generate a text shadow directly with our [CSS Text Shadow Generator](#).

Here you see how black text with a 4 pixel rgb(207, 178, 181) colored shadow looks like.

```
.shadow{ text-shadow: 4px 4px 2px rgb(207, 178, 181) }
```

Border

The CSS property to change the border of an element to HunterLab 69.6006, 6.4128, 5.7598 is called "border". The border property can be set on classes, ids or directly on the HTML element.

This example shows the color as border, it can be applied via the CSS property "border" or "border-color".

```
.border, #border, table{ border:4px solid rgb(207, 178, 181) }
```


If only the border color should be changed use the property `border-color`.

```
.border{ border-color:rgb(207, 178, 181) }
```

If you want to add a box shadow in that color use:

Here you see how a box with a 4 pixel `rgb(207, 178, 181)` colored shadow looks like.

```
.boxshadow{ -moz-box-shadow:4px 4px 4px  
4px rgb(207, 178, 181); -webkit-box-  
shadow:4px 4px 4px 4px rgb(207, 178, 181);  
box-shadow:4px 4px 4px 4px rgb(207, 178,  
181) }
```

Background

The CSS property to change the background color of an element to HunterLab 69.6006, 6.4128, 5.7598 is called "background". The background property can be set on classes, ids or directly on the HTML element.

```
.background, #background, body{  
background: rgb(207, 178, 181) }
```

If only the background color should be changed can be used:

```
.background{ background-color: rgb(207,  
178, 181) }
```

This example shows the color as background, it is applied via the CSS property "background".

To optimize and compress your CSS code, you can use our [online CSS compressor and optimizer](#) based on csstidy. If you want to create a linear or radial gradient as background or border, check our [CSS Gradient Generator](#).

Hey! You found this booklet interesting? Support Converting Colors with the new Membership Option!

The pro membership hides all ads, plus gives you double the colors in the color bucket, and more awesome pro features!

[Learn more, Memberships starting at \\$2.50/m!](#)

**Follow me
on Twitter!**

@ConvertingColor