

# Converting Colors

HunterLab(69.4602, 14.2719,  
4.2570)

Have a look what the booklet for  
HunterLab(69.4602, 14.2719,  
4.2570) contains.

<b>HunterLab(69.3007, 14.2529, 4.1554)</b> .....	3
<i><b>Conversions</b></i> .....	4
<i><b>Details</b></i> .....	6
<i><b>Harmonies</b></i> .....	12
<i><b>Previews</b></i> .....	24
<i><b>Color Blindness Simulation</b></i> .....	28
<i><b>CSS Examples</b></i> .....	31

# Color

**HunterLab(69.3007, 14.2529,  
4.1554)**

# Conversions

## Conversions Part 1

<b>Format</b>	<b>Color</b>
Hex	DBACB8
RGB	219, 172, 184
RGB Percent	86%, 67%, 72%
CMY	0.1412, 0.3255, 0.2784
CMYK	0.00, 0.21, 0.16, 0.14
HSL	345°, 39%, 77%
HSV	345°, 21%, 86%
XYZ	52.6177, 48.0259, 51.8441
YIQ	187.4210, 24.1600, 13.6960

# Conversions

## Conversions Part 2

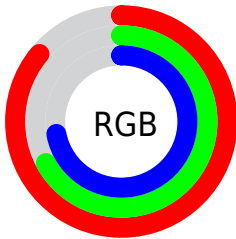
Format	Color
R <sub>Y</sub> B	219, 172, 184
Decimal	14396600
CIE Lab	74.84, 18.99, 0.45
CIE LCh	75, 18.998, 1.357
Yxy	48.0280, 0.3451, 0.3150
Android (android.graphics.Color)	4292586680 (0xFFDBACB8)
YUV	187.4210, -1.6866, 27.6948
Hunter-Lab	69.3007, 14.2529, 4.1554

# Details

The HunterLab color **69.3007, 14.2529, 4.1554** is a light color, and the websafe version is hex **CC9999**. A complement of this color would be **79.9625, -20.2625, 5.1452**, and the grayscale version is **70.6718, -3.7709, 3.8397**.

A 20% lighter version of the original color is **91.1252, 6.4675, 2.6264**, and **47.5593, 13.5958, 2.7748** is the 20% darker color. If you saturate the color by 10%, you get **63.0255, 23.3164, 4.5358**, and if you desaturate by 10%, it is **76.0174, 5.3839, 4.1675**.

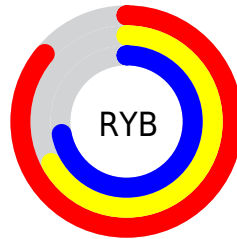
# Distribution



Red (86%)

Green (67%)

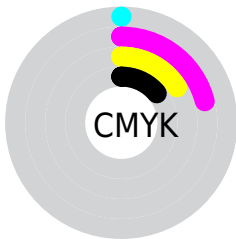
Blue (72%)



Red (86%)

Yellow (67%)

Blue (72%)

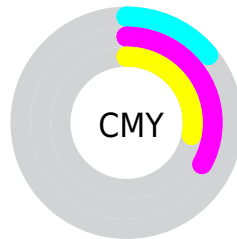


Cyan (0%)

Magenta (21%)

Yellow (16%)

Black (14%)



Cyan (14%)

Magenta (33%)

Yellow (28%)

# Brightness & Saturation Gradients

These gradients show how the HunterLab color 69.3007, 14.2529, 4.1554 changes by changing the brightness by 10 percent. The first figure shows a shift by +10% for each color and the second figure -10%.

Similar to the brightness gradients but the following saturation gradients show a change of the HunterLab color 69.3007, 14.2529, 4.1554 by changing the saturation by 10% instead.



69.3007, 14.2529,  
4.1554

69.3007, 14.2529,  
4.1554

194.6544, 14.3356,  
11.1386

58.1800, 13.9279,  
3.5293

93.4057, 14.6709,  
5.5091

47.7260, 13.5186,  
2.9370

106.3269, 14.7818,  
6.2313

37.9861, 13.0112,  
2.3818

119.7945, 14.8337,  
6.9824

29.0172, 12.3908,  
1.8664

133.7871, 14.8308,  
7.7614

20.8922, 11.6380,  
1.3940

148.2856, 14.7765,  
8.5674

13.7101, 10.7287,  
0.9690

163.2731, 14.6742,

7.3219, 11.0812,

9.3994

0.6532

178.7341, 14.5264,  
10.2568

0.0000, NaN, NaN

0.0000, NaN, NaN

■ 69.3007, 14.2529,  
4.1554

■ 69.3007, 14.2529,  
4.1554

■ 63.0255, 23.3164,  
4.5358

■ 76.0174, 5.3839,  
4.1675

■ 57.2703, 32.4794,  
5.3792

■ 83.1038, -3.2506,  
4.5008

■ 52.1369, 41.5218,  
6.7569

■ 90.5081, -11.6564,  
5.0999

■ 47.7390, 50.0579,  
8.7103

■ 96.6617, -17.5294,  
4.1623

■ 44.1915, 57.5131,

■ 96.8505, -16.4719,

11.2143

1.4734

■ 41.5849, 63.2036,  
14.1357

■ 39.9451, 66.5761,  
17.2203

■ 39.1724, 67.8103,  
19.6812

# Harmonies

## Analogous

The Analogous color harmony consists of three colors that are next to each other on the color wheel.



69.3023, 11.9663, -4.4940



69.3007, 14.2529, 4.1554



69.3023, 11.5264, 11.7202

# Triad

The Triadic color harmony groups three colors that are evenly spaced from another and form a triangle on the color wheel.



69.3023, 14.2506, 4.1566



69.3023, -12.3839, 16.2841



69.3023, -11.7157, -12.0899

# Complementary

The Complementary color scheme is a pair of colors which are on the opposite of each other on the color wheel.



69.3007, 14.2529, 4.1554



79.9625, -20.2625, 5.1452

# Split Complementary

Split-complementary colors differ from the complementary color scheme. The scheme consists of three colors, the original color and two neighbors of the complement color.



69.3023, -17.7185, -5.2450



69.3007, 14.2529, 4.1554



69.3023, -18.0903, 11.1311

# Square

The Square scheme is like the rectangle color scheme, but the four colors are evenly spaced on the color wheel.



69.3023, 14.2506, 4.1566



69.3023, -4.1062, 18.1537



69.3023, -19.9939, 3.3858



69.3023, -3.2959, -14.5561



# Rectangle

The Rectangle color scheme consists of four colors that form a rectangle on the color wheel.



69.3007, 14.2529, 4.1554



69.3023, 7.3125, 15.3210



69.3023, -19.9939, 3.3858



69.3023, -14.0679, -10.1856

# Sweetspot

The Sweet Spot groups the original color and five complimentary colors.



69.3023, 14.2506, 4.1566



94.8216, 0.8145, 5.1227



69.1452, 16.1361, -14.5768



43.6120, 0.6894, 2.3578

0.0000, NaN, NaN



46.2646, -2.4686, 2.5136



# Same Dimension

The Same Dimension uses a secret algorithm to generate beautiful new colors.



69.3023, 14.2506, 4.1566



78.7173, 22.0384, 5.0902



72.0375, 6.7191, 12.3814



36.2019, 1.6908, 1.9689



30.1890, 52.3084, 14.7874



7.7742, 13.6461, 2.4455



# Inverse Universe

The Inverse Universe completely reimagines the original color for something new.



69.3023, 14.2506, 4.1566



78.7173, 22.0384, 5.0902



76.8210, -12.7619, -4.6110



36.2019, 1.6908, 1.9689



30.1890, 52.3084, 14.7874



7.7742, 13.6461, 2.4455



# Previews

## White Background



This preview shows how the HunterLab color 69.3007, 14.2529, 4.1554 looks on a white background.

## Color Contrast Check

Large Text (above 18pt) WCAG AA × Fail

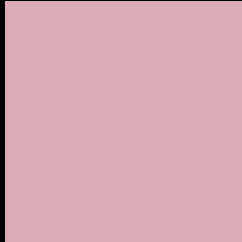
Any Text WCAG AA × Fail

Large Text (above 18pt) WCAG AAA × Fail

Any Text WCAG AAA × Fail



# Black Background



This preview shows how the HunterLab color 69.3007, 14.2529, 4.1554 looks on a black background.

## Color Contrast Check

Large Text (above 18pt) WCAG AA ✓ Pass

Any Text WCAG AA ✓ Pass

Large Text (above 18pt) WCAG AAA ✓ Pass

Any Text WCAG AAA ✓ Pass

If you want to check with other color combinations, try the [Color Contrast Checker](#).

## HunterLab 69.3007, 14.2529, 4.1554 Background



This preview shows how black text looks on a background with the HunterLab color 69.3007, 14.2529, 4.1554.



This preview shows how white text looks on a background with the HunterLab color 69.3007, 14.2529,

4.1554.

# Color Blindness Simulation

Color vision deficiency is a very complex topic, and I could not describe the different causes any better than Wikipedia does, so if you want to learn more, you should check out their [article about color blindness](#).

## Dichromacy



### Original Color

69.3007, 14.2529, 4.1554

### Protanopia

69.3308, -1.3852, 0.5453

### Deuteranopia

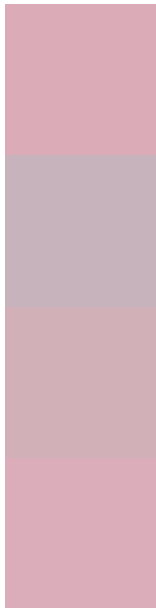
69.5382, 4.8476, 4.7366



## Tritanopia

69.3310, 14.4114, 3.7222

# Trichromacy



## Original Color

69.3007, 14.2529, 4.1554

## Protanomaly

69.1931, 3.9931, 1.9387

## Deuteranomaly

69.3000, 8.4584, 4.5217

## Tritanomaly

69.3310, 14.4114, 3.7222

# Monochromacy



## Original Color

69.3007, 14.2529, 4.1554

## Achromatopsia

70.4935, -3.7614, 3.8300

## Achromatomaly

70.1022, 2.4558, 3.9501

# CSS Examples

## Text

The CSS property to change the color of the text to HunterLab 69.3007, 14.2529, 4.1554 is called "color". The color property can be set on classes, ids or directly on the HTML element.

This example shows how text in the color `rgb(219, 172, 184)` looks like.

```
.text, #text, p{  
    color:rgb(219, 172, 184)  
}
```

If you want to add a text shadow in that color use the text-shadow property, you can generate a text shadow directly with our [CSS Text Shadow Generator](#).

Here you see how black text with a 4 pixel rgb(219, 172, 184) colored shadow looks like.

```
.shadow{ text-shadow: 4px 4px 2px rgb(219, 172, 184) }
```

## Border

The CSS property to change the border of an element to HunterLab 69.3007, 14.2529, 4.1554 is called "border". The border property can be set on classes, ids or directly on the HTML element.

This example shows the color as border, it can be applied via the CSS property "border" or "border-color".

```
.border, #border, table{ border:4px solid rgb(219, 172, 184) }
```



If only the border color should be changed use the property `border-color`.

```
.border{ border-color:rgb(219, 172, 184) }
```

If you want to add a box shadow in that color use:

Here you see how a box with a 4 pixel `rgb(219, 172, 184)` colored shadow looks like.

```
.boxshadow{ -moz-box-shadow:4px 4px 4px  
4px rgb(219, 172, 184); -webkit-box-  
shadow:4px 4px 4px 4px rgb(219, 172, 184);  
box-shadow:4px 4px 4px 4px rgb(219, 172,  
184) }
```

# Background

The CSS property to change the background color of an element to HunterLab 69.3007, 14.2529, 4.1554 is called "background". The background property can be set on classes, ids or directly on the HTML element.

```
.background, #background, body{  
background: rgb(219, 172, 184) }
```

If only the background color should be changed can be used:

```
.background{ background-color: rgb(219,  
172, 184) }
```

This example shows the color as background, it is applied via the CSS property "background".

To optimize and compress your CSS code, you can use our [online CSS compressor and optimizer](#) based on csstidy. If you want to create a linear or radial gradient as background or border, check our [CSS Gradient Generator](#).

Hey! You found this booklet interesting? Support Converting Colors with the new Membership Option!

The pro membership hides all ads, plus gives you double the colors in the color bucket, and more awesome pro features!

**[Learn more, Memberships starting at \\$2.50/m!](#)**

**Follow me  
on Twitter!**

@ConvertingColor