

Converting Colors

HunterLab(69.4854, 0.8277,
5.2953)

Have a look what the booklet for
HunterLab(69.4854, 0.8277, 5.2953)
contains.

HunterLab(69.6915, 0.8188, 5.3072)	3
<i>Conversions</i>	4
<i>Details</i>	6
<i>Harmonies</i>	12
<i>Previews</i>	24
<i>Color Blindness Simulation</i>	28
<i>CSS Examples</i>	31

Color

**HunterLab(69.6915, 0.8188,
5.3072)**

Conversions

Conversions Part 1

Format	Color
Hex	C4B6B6
RGB	196, 182, 182
RGB Percent	77%, 71%, 71%
CMY	0.2314, 0.2863, 0.2863
CMYK	0.00, 0.07, 0.07, 0.23
HSL	0°, 11%, 74%
HSV	0°, 7%, 77%
XYZ	47.9364, 48.5691, 51.1042
YIQ	186.1860, 8.3440, 2.9680

Conversions

Conversions Part 2

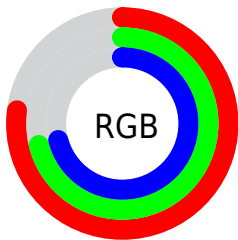
Format	Color
R _Y B	196, 182, 182
Decimal	12891830
CIE Lab	75.18, 4.97, 1.78
CIE LCh	75, 5.277, 19.764
Yxy	48.5712, 0.3248, 0.3290
Android (android.graphics.Color)	4291081910 (0xFFC4B6B6)
YUV	186.1860, -2.0637, 8.6069
Hunter-Lab	69.6915, 0.8188, 5.3072

Details

The HunterLab color $69.6915, 0.8188, 5.3072$ is a light color, and the websafe version is hex `CCCCCC`. A complement of this color would be $73.0819, -8.2246, 2.5194$, and the grayscale version is $70.1583, -3.7435, 3.8118$.

A 20% lighter version of the original color is $93.9174, 0.0758, 6.8077$, and $47.9961, 1.4261, 3.9440$ is the 20% darker color. If you saturate the color by 10%, you get $63.5169, 7.7625, 7.1923$, and if you desaturate by 10%, it is $76.1806, -5.8377, 3.5442$.

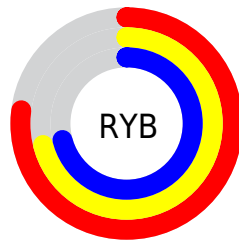
Distribution



Red (77%)

Green (71%)

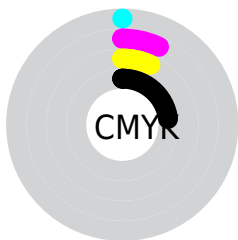
Blue (71%)



Red (77%)

Yellow (71%)

Blue (71%)

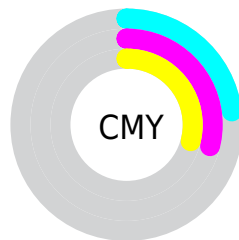


Cyan (0%)

Magenta (7%)

Yellow (7%)

Black (23%)



Cyan (23%)

Magenta (29%)

Yellow (29%)

Brightness & Saturation Gradients

These gradients show how the HunterLab color 69.6915, 0.8188, 5.3072 changes by changing the brightness by 10 percent. The first figure shows a shift by +10% for each color and the second figure -10%.

Similar to the brightness gradients but the following saturation gradients show a change of the HunterLab color 69.6915, 0.8188, 5.3072 by changing the saturation by 10% instead.

■ 69.6915, 0.8188,
5.3072

■ 69.6915, 0.8188,
5.3072

195.2055, -4.0674,
12.7729

■ 58.5486, 1.1627,
4.6142

■ 93.8372, -0.0108,
6.7839

■ 48.0711, 1.4574,
3.9507

106.7775, -0.4863,
7.5634

■ 38.3060, 1.6954,
3.3190

120.2633, -0.9996,
8.3694

■ 29.3097, 1.8690,
2.7202

134.2735, -1.5484,
9.2013

■ 21.1545, 1.9676,
2.1555

148.7890, -2.1311,
10.0583

■ 13.9382, 1.9749,
1.6252

163.7929, -2.7461,

■ 7.5755, 2.4522,

10.9396

1.3888

179.2697, -3.3919,
11.8447

0.0000, NaN, NaN

0.0000, NaN, NaN

■ 69.6915, 0.8188,
5.3072

■ 69.6915, 0.8188,
5.3072

■ 63.5169, 7.7625,
7.1923

■ 76.1806, -5.8377,
3.5442

■ 57.7081, 15.0124,
9.2044

■ 82.9356, -12.2318,
1.8864

■ 52.3367, 22.5404,
11.3410

■ 89.9230, -18.4011,
0.3206

■ 47.4893, 30.2432,
13.5734

■ 95.1188, -22.7569,
-0.7581

■ 43.2678, 37.8884,

15.8311

■ 39.7825, 45.0657,
17.9844

■ 37.1325, 51.1926,
19.8452

■ 35.3732, 55.6515,
21.2105

■ 34.4540, 58.1247,
21.9712

Harmonies

Analogous

The Analogous color harmony consists of three colors that are next to each other on the color wheel.



69.6930, 1.0270, 2.9836



69.6915, 0.8188, 5.3072



69.6930, -0.6190, 7.1645

Triad

The Triadic color harmony groups three colors that are evenly spaced from another and form a triangle on the color wheel.



69.6930, 0.8169, 5.3083



69.6930, -7.3212, 6.6573



69.6930, -4.5668, -0.8141

Complementary

The Complementary color scheme is a pair of colors which are on the opposite of each other on the color wheel.



69.6915, 0.8188, 5.3072



73.0819, -8.2246, 2.5194

Split Complementary

Split-complementary colors differ from the complementary color scheme. The scheme consists of three colors, the original color and two neighbors of the complement color.



69.6930, -6.7724, 0.2454



69.6915, 0.8188, 5.3072



69.6930, -8.3479, 4.5940

Square

The Square scheme is like the rectangle color scheme, but the four colors are evenly spaced on the color wheel.



69.6930, 0.8169, 5.3083



69.6930, -5.3256, 7.9243



69.6930, -8.1484, 2.2440



69.6930, -2.1045, -0.6066

Rectangle

The Rectangle color scheme consists of four colors that form a rectangle on the color wheel.



69.6915, 0.8188, 5.3072



69.6930, -2.0672, 7.9123



69.6930, -8.1484, 2.2440



69.6930, -5.3622, -0.5929

Sweetspot

The Sweet Spot groups the original color and five complimentary colors.



69.6930, 0.8169, 5.3083



98.2170, -3.5252, 5.9119



70.1269, 3.1658, -0.8873



45.4804, -1.6726, 2.7241

0.0000, NaN, NaN



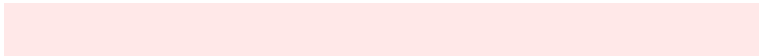
46.2646, -2.4686, 2.5136

Same Dimension

The Same Dimension uses a secret algorithm to generate beautiful new colors.



69.6930, 0.8169, 5.3083



92.1052, 2.9354, 7.6380



71.7698, -2.7168, 7.6156



31.7463, 1.0838, 2.6568



27.4620, 47.0214, 17.7451



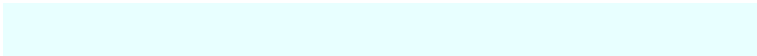
5.7096, 9.7698, 3.6892

Inverse Universe

The Inverse Universe completely reimagines the original color for something new.



73.0819, -8.2246, 2.5194



97.9288, -12.6080, 2.8433



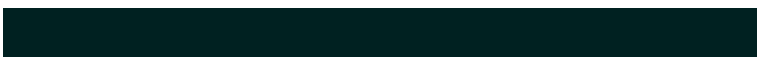
70.9412, -4.7461, -0.0173



33.8054, -4.4121, 0.9614



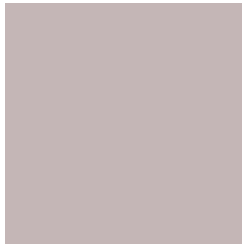
52.8343, -28.0016, -5.5908



10.9829, -5.8213, -1.1613

Previews

White Background



This preview shows how the HunterLab color 69.6915, 0.8188, 5.3072 looks on a white background.

Color Contrast Check

Large Text (above 18pt) WCAG AA × Fail

Any Text WCAG AA × Fail

Large Text (above 18pt) WCAG AAA × Fail

Any Text WCAG AAA × Fail

Black Background



This preview shows how the HunterLab color 69.6915, 0.8188, 5.3072 looks on a black background.

Color Contrast Check

Large Text (above 18pt) WCAG AA ✓ Pass

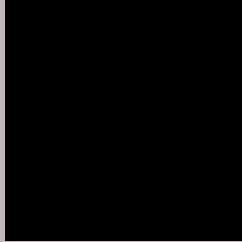
Any Text WCAG AA ✓ Pass

Large Text (above 18pt) WCAG AAA ✓ Pass

Any Text WCAG AAA ✓ Pass

If you want to check with other color combinations, try the [Color Contrast Checker](#).

HunterLab 69.6915, 0.8188, 5.3072 Background



This preview shows how black text looks on a background with the HunterLab color 69.6915, 0.8188, 5.3072.



This preview shows how white text looks on a background with the HunterLab color 69.6915, 0.8188,

Color Blindness Simulation

Color vision deficiency is a very complex topic, and I could not describe the different causes any better than Wikipedia does, so if you want to learn more, you should check out their [article about color blindness](#).

Dichromacy



Original Color

69.6915, 0.8188, 5.3072

Protanopia

69.6554, -2.2893, 4.7481

Deuteranopia

69.6394, 5.1870, 4.8604



Tritanopia

69.6730, 4.4990, -0.4219

Trichromacy



Original Color

69.6915, 0.8188, 5.3072

Protanomaly

69.6364, -0.8268, 4.7517

Deuteranomaly

69.6268, 3.6597, 4.8190

Tritanomaly

69.7393, 2.9741, 1.6091

Monochromacy



Original Color

69.6915, 0.8188, 5.3072

Achromatopsia

70.0729, -3.7389, 3.8072

Achromatomaly

70.1055, -2.1465, 4.3432

CSS Examples

Text

The CSS property to change the color of the text to HunterLab 69.6915, 0.8188, 5.3072 is called "color". The color property can be set on classes, ids or directly on the HTML element.

This example shows how text in the color `rgb(196, 182, 182)` looks like.

```
.text, #text, p{  
    color:rgb(196, 182, 182)  
}
```

If you want to add a text shadow in that color use the text-shadow property, you can generate a text shadow directly with our [CSS Text Shadow Generator](#).

Here you see how black text with a 4 pixel rgb(196, 182, 182) colored shadow looks like.

```
.shadow{ text-shadow: 4px 4px 2px rgb(196, 182, 182) }
```

Border

The CSS property to change the border of an element to HunterLab 69.6915, 0.8188, 5.3072 is called "border".

The border property can be set on classes, ids or directly on the HTML element.

This example shows the color as border, it can be applied via the CSS property "border" or "border-color".

```
.border, #border, table{ border:4px solid rgb(196, 182, 182) }
```


If only the border color should be changed use the property `border-color`.

```
.border{ border-color:rgb(196, 182, 182) }
```

If you want to add a box shadow in that color use:

Here you see how a box with a 4 pixel `rgb(196, 182, 182)` colored shadow looks like.

```
.boxshadow{ -moz-box-shadow:4px 4px 4px  
4px rgb(196, 182, 182); -webkit-box-  
shadow:4px 4px 4px 4px rgb(196, 182, 182);  
box-shadow:4px 4px 4px 4px rgb(196, 182,  
182) }
```

Background

The CSS property to change the background color of an element to HunterLab 69.6915, 0.8188, 5.3072 is called "background". The background property can be set on classes, ids or directly on the HTML element.

```
.background, #background, body{  
background: rgb(196, 182, 182) }
```

If only the background color should be changed can be used:

```
.background{ background-color: rgb(196,  
182, 182) }
```

This example shows the color as background, it is applied via the CSS property "background".

To optimize and compress your CSS code, you can use our [online CSS compressor and optimizer](#) based on csstidy. If you want to create a linear or radial gradient as background or border, check our [CSS Gradient Generator](#).

Hey! You found this booklet interesting? Support Converting Colors with the new Membership Option!

The pro membership hides all ads, plus gives you double the colors in the color bucket, and more awesome pro features!

[Learn more, Memberships starting at \\$2.50/m!](#)

**Follow me
on Twitter!**

@ConvertingColor