

Converting Colors

HunterLab(69.5128, 7.3531,
7.4843)

Have a look what the booklet for
HunterLab(69.5128, 7.3531, 7.4843)
contains.

HunterLab(69.5128, 7.3531, 7.4843)	3
<i>Conversions</i>	4
<i>Details</i>	6
<i>Harmonies</i>	12
<i>Previews</i>	24
<i>Color Blindness Simulation</i>	28
<i>CSS Examples</i>	31

Color

**HunterLab(69.5128, 7.3531,
7.4843)**

Conversions

Conversions Part 1

Format	Color
Hex	D2B1B1
RGB	210, 177, 177
RGB Percent	82%, 69%, 69%
CMY	0.1765, 0.3059, 0.3059
CMYK	0.00, 0.16, 0.16, 0.18
HSL	0°, 27%, 76%
HSV	0°, 16%, 82%
XYZ	50.2363, 48.3203, 48.2740
YIQ	186.8670, 19.6680, 6.9960

Conversions

Conversions Part 2

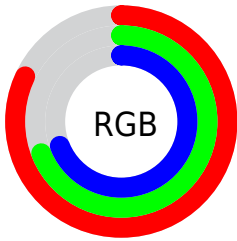
Format	Color
R _Y B	210, 177, 177
Decimal	13808049
CIE Lab	75.03, 11.90, 4.44
CIE LCh	75, 12.705, 20.452
Yxy	48.3225, 0.3421, 0.3291
Android (android.graphics.Color)	4291998129 (0xFFD2B1B1)
YUV	186.8670, -4.8644, 20.2876
Hunter-Lab	69.5128, 7.3531, 7.4843

Details

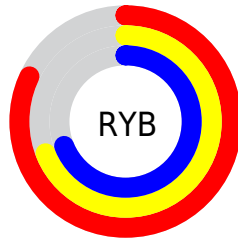
The HunterLab color $69.5128, 7.3531, 7.4843$ is a light color, and the websafe version is hex $CC9999$. A complement of this color would be $77.5191, -14.0538, 0.8858$, and the grayscale version is $70.4528, -3.7592, 3.8278$.

A 20% lighter version of the original color is $92.4235, 2.5895, 7.5422$, and $47.7903, 7.3657, 5.9198$ is the 20% darker color. If you saturate the color by 10%, you get $63.1519, 15.1772, 9.6500$, and if you desaturate by 10%, it is $76.2683, -0.1438, 5.4602$.

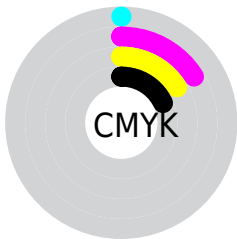
Distribution



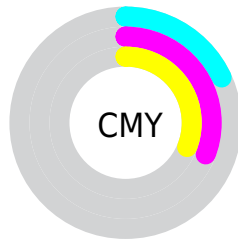
- Red (82%)
- Green (69%)
- Blue (69%)



- Red (82%)
- Yellow (69%)
- Blue (69%)



- Cyan (0%)
- Magenta (16%)
- Yellow (16%)
- Black (18%)





- Cyan (18%)
- Magenta (31%)
- Yellow (31%)

Brightness & Saturation Gradients


These gradients show how the HunterLab color 69.5128, 7.3531, 7.4843 changes by changing the brightness by 10 percent. The first figure shows a shift by +10% for each color and the second figure -10%.


Similar to the brightness gradients but the following saturation gradients show a change of the HunterLab color 69.5128, 7.3531, 7.4843 by changing the saturation by 10% instead.


 69.5128, 7.3531,
7.4843

 69.5128, 7.3531,
7.4843


194.9536, 4.9578,
15.9064

 58.3801, 7.3589,
6.6579


 93.6399, 7.1515,
9.2062

 47.9133, 7.2968,
5.8516


106.5715, 6.9704,
10.0995

 38.1597, 7.1552,
5.0657


120.0490, 6.7406,
11.0144

 29.1759, 6.9218,
4.2980

134.0511, 6.4651,
11.9510

 21.0345, 6.5794,
3.5446

148.5589, 6.1469,
12.9087

 13.8338, 6.1028,
2.7970

163.5553, 5.7882,

 7.4607, 6.5544,

13.8874

2.8727

179.0249, 5.3912,
14.8867

0.0000, NaN, NaN

0.0000, NaN, NaN

■ 69.5128, 7.3531,
7.4843

■ 69.5128, 7.3531,
7.4843

■ 63.1519, 15.1772,
9.6500

■ 76.2683, -0.1438,
5.4602

■ 57.2554, 23.3140,
11.9520

■ 83.3544, -7.3252,
3.5638

■ 51.9173, 31.6620,
14.3649

■ 90.7260, -14.2281,
1.7813

■ 47.2476, 39.9874,
16.8181

■ 96.1466, -19.0121,
0.5712

■ 43.3666, 47.8655,

19.1780

■ 40.3858, 54.6759,
21.2446

■ 38.3734, 59.7335,
22.7933

■ 37.3060, 62.5910,
23.6728

■ 37.0166, 63.3883,
23.9192

Harmonies

Analogous

The Analogous color harmony consists of three colors that are next to each other on the color wheel.



69.5144, 7.9500, 1.9517



69.5128, 7.3531, 7.4843



69.5144, 3.7335, 11.6741

Triad

The Triadic color harmony groups three colors that are evenly spaced from another and form a triangle on the color wheel.



69.5144, 7.3509, 7.4855



69.5144, -12.3285, 10.3717



69.5144, -5.6030, -7.8447

Complementary

The Complementary color scheme is a pair of colors which are on the opposite of each other on the color wheel.



69.5128, 7.3531, 7.4843



77.5191, -14.0538, 0.8858

Split Complementary

Split-complementary colors differ from the complementary color scheme. The scheme consists of three colors, the original color and two neighbors of the complement color.



69.5144, -10.8583, -5.1556



69.5128, 7.3531, 7.4843



69.5144, -14.6541, 5.5674

Square

The Square scheme is like the rectangle color scheme, but the four colors are evenly spaced on the color wheel.



69.5144, 7.3509, 7.4855



69.5144, -7.6711, 13.2405



69.5144, -14.1252, -0.1332



69.5144, 0.3360, -7.2220

Rectangle

The Rectangle color scheme consists of four colors that form a rectangle on the color wheel.



69.5128, 7.3531, 7.4843



69.5144, 0.1622, 13.2908



69.5144, -14.1252, -0.1332



69.5144, -7.5048, -7.2901

Sweetspot

The Sweet Spot groups the original color and five complimentary colors.



69.5144, 7.3509, 7.4855



95.5719, -0.7794, 6.6413



70.5689, 12.9271, -7.5174



43.9318, -0.0607, 3.1526

0.0000, NaN, NaN



46.2646, -2.4686, 2.5136

Same Dimension

The Same Dimension uses a secret algorithm to generate beautiful new colors.



69.5144, 7.3509, 7.4855



83.7578, 12.5200, 10.2473



74.3222, -1.1035, 12.5951



34.3635, 1.2049, 2.8859



28.9106, 49.5065, 18.6813



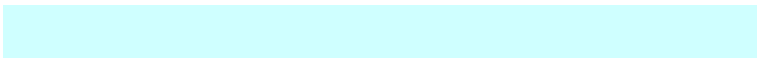
6.8368, 11.7043, 4.4177

Inverse Universe

The Inverse Universe completely reimagines the original color for something new.



77.5191, -14.0538, 0.8858



95.8838, -19.9559, 0.2328



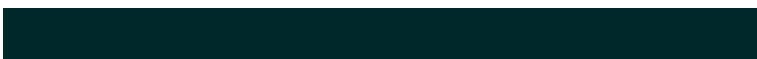
72.3618, -5.8954, -5.4730



36.6154, -4.8052, 1.0331



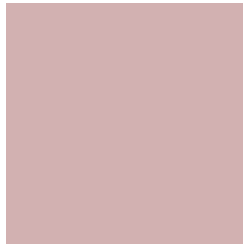
55.6302, -29.4881, -5.8765



13.1547, -6.9731, -1.3892

Previews

White Background



This preview shows how the HunterLab color 69.5128, 7.3531, 7.4843 looks on a white background.

Color Contrast Check

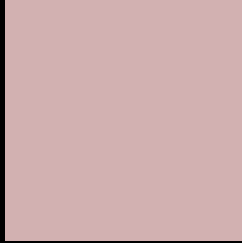
Large Text (above 18pt) WCAG AA × Fail

Any Text WCAG AA × Fail

Large Text (above 18pt) WCAG AAA × Fail

Any Text WCAG AAA × Fail

Black Background



This preview shows how the HunterLab color 69.5128, 7.3531, 7.4843 looks on a black background.

Color Contrast Check

Large Text (above 18pt) WCAG AA ✓ Pass

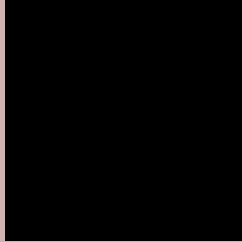
Any Text WCAG AA ✓ Pass

Large Text (above 18pt) WCAG AAA ✓ Pass

Any Text WCAG AAA ✓ Pass

If you want to check with other color combinations, try the [Color Contrast Checker](#).

HunterLab 69.5128, 7.3531, 7.4843 Background



This preview shows how black text looks on a background with the HunterLab color 69.5128, 7.3531, 7.4843.



This preview shows how white text looks on a background with the HunterLab color 69.5128, 7.3531,

7.4843.

Color Blindness Simulation

Color vision deficiency is a very complex topic, and I could not describe the different causes any better than Wikipedia does, so if you want to learn more, you should check out their [article about color blindness](#).

Dichromacy



Original Color

69.5128, 7.3531, 7.4843

Protanopia

69.5960, -2.6136, 5.5965

Deuteranopia

69.6680, 4.9318, 7.6166



Tritanopia

69.5206, 10.9975, 1.9715

Trichromacy



Original Color

69.5128, 7.3531, 7.4843

Protanomaly

69.4358, 1.3369, 5.9388

Deuteranomaly

69.4842, 5.7916, 7.4247

Tritanomaly

69.5718, 9.4751, 3.9200

Monochromacy



Original Color

69.5128, 7.3531, 7.4843

Achromatopsia

70.4935, -3.7614, 3.8300

Achromatomaly

69.9199, 0.1456, 5.0980

CSS Examples

Text

The CSS property to change the color of the text to HunterLab 69.5128, 7.3531, 7.4843 is called "color". The color property can be set on classes, ids or directly on the HTML element.

This example shows how text in the color `rgb(210, 177, 177)` looks like.

```
.text, #text, p{  
    color:rgb(210, 177, 177)  
}
```

If you want to add a text shadow in that color use the text-shadow property, you can generate a text shadow directly with our [CSS Text Shadow Generator](#).

Here you see how black text with a 4 pixel rgb(210, 177, 177) colored shadow looks like.

```
.shadow{ text-shadow: 4px 4px 2px rgb(210, 177, 177) }
```

Border

The CSS property to change the border of an element to HunterLab 69.5128, 7.3531, 7.4843 is called "border". The border property can be set on classes, ids or directly on the HTML element.

This example shows the color as border, it can be applied via the CSS property "border" or "border-color".

```
.border, #border, table{ border:4px solid rgb(210, 177, 177) }
```


If only the border color should be changed use the property `border-color`.

```
.border{ border-color:rgb(210, 177, 177) }
```

If you want to add a box shadow in that color use:

Here you see how a box with a 4 pixel `rgb(210, 177, 177)` colored shadow looks like.

```
.boxshadow{ -moz-box-shadow:4px 4px 4px  
4px rgb(210, 177, 177); -webkit-box-  
shadow:4px 4px 4px 4px rgb(210, 177, 177);  
box-shadow:4px 4px 4px 4px rgb(210, 177,  
177) }
```

Background

The CSS property to change the background color of an element to HunterLab 69.5128, 7.3531, 7.4843 is called "background". The background property can be set on classes, ids or directly on the HTML element.

```
.background, #background, body{  
background: rgb(210, 177, 177) }
```

If only the background color should be changed can be used:

```
.background{ background-color: rgb(210,  
177, 177) }
```

This example shows the color as background, it is applied via the CSS property "background".

To optimize and compress your CSS code, you can use our [online CSS compressor and optimizer](#) based on csstidy. If you want to create a linear or radial gradient as background or border, check our [CSS Gradient Generator](#).

Hey! You found this booklet interesting? Support Converting Colors with the new Membership Option!

The pro membership hides all ads, plus gives you double the colors in the color bucket, and more awesome pro features!

[Learn more, Memberships starting at \\$2.50/m!](#)

**Follow me
on Twitter!**

@ConvertingColor