

Converting Colors

HunterLab(69.7151, 4.5222,
6.0890)

Have a look what the booklet for
HunterLab(69.7151, 4.5222, 6.0890)
contains.

HunterLab(69.8392, 4.1981, 6.4504)	3
<i>Conversions</i>	4
<i>Details</i>	6
<i>Harmonies</i>	12
<i>Previews</i>	24
<i>Color Blindness Simulation</i>	28
<i>CSS Examples</i>	31

Color

**HunterLab(69.8392, 4.1981,
6.4504)**

Conversions

Conversions Part 1

Format	Color
Hex	CCB4B4
RGB	204, 180, 180
RGB Percent	80%, 71%, 71%
CMY	0.2000, 0.2941, 0.2941
CMYK	0.00, 0.12, 0.12, 0.20
HSL	0°, 19%, 75%
HSV	0°, 12%, 80%
XYZ	49.4613, 48.7751, 49.9877
YIQ	187.1760, 14.3040, 5.0880

Conversions

Conversions Part 2

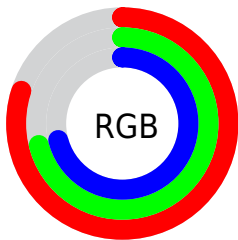
Format	Color
RYB	204, 180, 180
Decimal	13415604
CIELab	75.31, 8.59, 3.15
CIElCh	75, 9.146, 20.125
Yxy	48.7773, 0.3337, 0.3291
Android (android.graphics.Color)	4291605684 (0xFFCCB4B4)
YUV	187.1760, -3.5378, 14.7546
Hunter-Lab	69.8392, 4.1981, 6.4504

Details

The HunterLab color **69.8392, 4.1981, 6.4504** is a light color, and the websafe version is hex **CCCCCC**. A complement of this color would be **75.6621, -11.3499, 1.6581**, and the grayscale version is **70.5790, -3.7659, 3.8347**.

A 20% lighter version of the original color is **93.4382, 1.4913, 7.2474**, and **48.1613, 4.6608, 5.0400** is the 20% darker color. If you saturate the color by 10%, you get **63.5354, 11.6294, 8.4888**, and if you desaturate by 10%, it is **76.4993, -2.9215, 4.5455**.

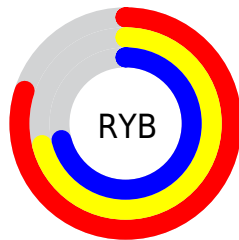
Distribution



Red (80%)

Green (71%)

Blue (71%)



Red (80%)

Yellow (71%)

Blue (71%)

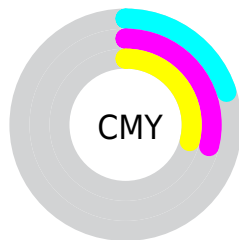


Cyan (0%)

Magenta (12%)

Yellow (12%)

Black (20%)



Cyan (20%)

Magenta (29%)

Yellow (29%)

Brightness & Saturation Gradients

These gradients show how the HunterLab color 69.8392, 4.1981, 6.4504 changes by changing the brightness by 10 percent. The first figure shows a shift by +10% for each color and the second figure -10%.

Similar to the brightness gradients but the following saturation gradients show a change of the HunterLab color 69.8392, 4.1981, 6.4504 by changing the saturation by 10% instead.

■ 69.8392, 4.1981,
6.4504

■ 69.8392, 4.1981,
6.4504

195.4137, 0.6123,
14.4084

■ 58.6880, 4.3651,
5.6890

■ 94.0003, 3.6968,
8.0531

■ 48.2017, 4.4728,
4.9524

106.9478, 3.3750,
8.8910

■ 38.4271, 4.5117,
4.2418

120.4405, 3.0097,
9.7532

■ 29.4204, 4.4713,
3.5569

134.4572, 2.6036,
10.6389

■ 21.2538, 4.3373,
2.8963

148.9792, 2.1589,
11.5478

■ 14.0246, 4.0878,
2.2561

163.9892, 1.6776,

■ 7.6690, 4.4698,

12.4793

2.1183

179.4721, 1.1615,
13.4330

0.0000, NaN, NaN

0.0000, NaN, NaN

■ 69.8392, 4.1981,
6.4504

■ 69.8392, 4.1981,
6.4504

■ 63.5354, 11.6294,
8.4888

■ 76.4993, -2.9215,
4.5455

■ 57.6487, 19.3769,
10.6613

■ 83.4591, -9.7490,
2.7583

■ 52.2628, 27.3787,
12.9549

■ 90.6792, -16.3228,
1.0748

■ 47.4768, 35.4691,
15.3212

■ 95.6961, -20.6482,
-0.0097

■ 43.4041, 43.3184,

17.6577

■ 40.1586, 50.3999,
19.7962

■ 37.8279, 56.0529,
21.5214

■ 36.4320, 59.7097,
22.6448

■ 35.8304, 61.3559,
23.1526

Harmonies

Analogous

The Analogous color harmony consists of three colors that are next to each other on the color wheel.



69.8407, 4.5953, 2.4406



69.8392, 4.1981, 6.4504



69.8407, 1.6448, 9.5671

Triad

The Triadic color harmony groups three colors that are evenly spaced from another and form a triangle on the color wheel.



69.8407, 4.1961, 6.4515



69.8407, -9.9572, 8.6540



69.8407, -5.1412, -4.3912

Complementary

The Complementary color scheme is a pair of colors which are on the opposite of each other on the color wheel.



69.8392, 4.1981, 6.4504



75.6621, -11.3499, 1.6581

Split Complementary

Split-complementary colors differ from the complementary color scheme. The scheme consists of three colors, the original color and two neighbors of the complement color.



69.8407, -8.9475, -2.5016



69.8392, 4.1981, 6.4504



69.8407, -11.6832, 5.1358

Square

The Square scheme is like the rectangle color scheme, but the four colors are evenly spaced on the color wheel.



69.8407, 4.1961, 6.4515



69.8407, -6.5497, 10.7844



69.8407, -11.3181, 1.0436



69.8407, -0.8654, -3.9861

Rectangle

The Rectangle color scheme consists of four colors that form a rectangle on the color wheel.



69.8392, 4.1981, 6.4504



69.8407, -0.8998, 10.7949



69.8407, -11.3181, 1.0436



69.8407, -6.5163, -3.9991

Sweetspot

The Sweet Spot groups the original color and five complimentary colors.



69.8407, 4.1961, 6.4515



96.4495, -1.6986, 6.3966



70.5976, 8.2422, -4.3310



44.3164, -0.4662, 3.0445

0.0000, NaN, NaN



46.2646, -2.4686, 2.5136

Same Dimension

The Same Dimension uses a secret algorithm to generate beautiful new colors.



69.8407, 4.1961, 6.4515



87.8708, 7.6749, 8.9204



73.3707, -1.9140, 10.2833



33.4872, 1.1644, 2.8092



28.4263, 48.6760, 18.3683



6.4572, 11.0533, 4.1724

Inverse Universe

The Inverse Universe completely reimagines the original color for something new.



75.6621, -11.3499, 1.6581



96.8727, -16.3830, 1.5020



71.9464, -5.3991, -2.8392



35.6746, -4.6736, 1.0092



54.6962, -28.9919, -5.7802



12.4236, -6.5854, -1.3124

Previews

White Background



This preview shows how the HunterLab color 69.8392, 4.1981, 6.4504 looks on a white background.

Color Contrast Check

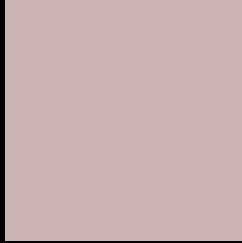
Large Text (above 18pt) WCAG AA × Fail

Any Text WCAG AA × Fail

Large Text (above 18pt) WCAG AAA × Fail

Any Text WCAG AAA × Fail

Black Background



This preview shows how the HunterLab color 69.8392, 4.1981, 6.4504 looks on a black background.

Color Contrast Check

Large Text (above 18pt) WCAG AA ✓ Pass

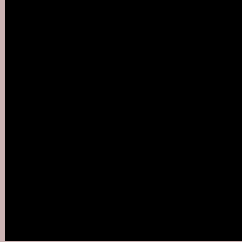
Any Text WCAG AA ✓ Pass

Large Text (above 18pt) WCAG AAA ✓ Pass

Any Text WCAG AAA ✓ Pass

If you want to check with other color combinations, try the [Color Contrast Checker](#).

HunterLab 69.8392, 4.1981, 6.4504 Background



This preview shows how black text looks on a background with the HunterLab color 69.8392, 4.1981, 6.4504.



This preview shows how white text looks on a background with the HunterLab color 69.8392, 4.1981,

6.4504.

Color Blindness Simulation

Color vision deficiency is a very complex topic, and I could not describe the different causes any better than Wikipedia does, so if you want to learn more, you should check out their [article about color blindness](#).

Dichromacy



Original Color

69.8392, 4.1981, 6.4504

Protanopia

69.9540, -2.7906, 5.0861

Deuteranopia

69.7548, 5.3960, 6.3750



Tritanopia

69.8344, 7.8632, 0.8299

Trichromacy



Original Color

69.8392, 4.1981, 6.4504

Protanomaly

69.7952, -0.3412, 5.4067

Deuteranomaly

69.6524, 5.0532, 6.2520

Tritanomaly

69.8929, 6.3381, 2.8192

Monochromacy



Original Color

69.8392, 4.1981, 6.4504

Achromatopsia

70.4935, -3.7614, 3.8300

Achromatomaly

70.0565, -0.8466, 4.7754

CSS Examples

Text

The CSS property to change the color of the text to HunterLab 69.8392, 4.1981, 6.4504 is called "color". The color property can be set on classes, ids or directly on the HTML element.

This example shows how text in the color `rgb(204, 180, 180)` looks like.

```
.text, #text, p{  
    color:rgb(204, 180, 180)  
}
```

If you want to add a text shadow in that color use the text-shadow property, you can generate a text shadow directly with our [CSS Text Shadow Generator](#).

Here you see how black text with a 4 pixel rgb(204, 180, 180) colored shadow looks like.

```
.shadow{ text-shadow: 4px 4px 2px rgb(204, 180, 180) }
```

Border

The CSS property to change the border of an element to HunterLab 69.8392, 4.1981, 6.4504 is called "border". The border property can be set on classes, ids or directly on the HTML element.

This example shows the color as border, it can be applied via the CSS property "border" or "border-color".

```
.border, #border, table{ border:4px solid rgb(204, 180, 180) }
```


If only the border color should be changed use the property border-color.

```
.border{ border-color:rgb(204, 180, 180) }
```

If you want to add a box shadow in that color use:

Here you see how a box with a 4 pixel rgb(204, 180, 180) colored shadow looks like.

```
.boxshadow{ -moz-box-shadow:4px 4px 4px  
4px rgb(204, 180, 180); -webkit-box-  
shadow:4px 4px 4px 4px rgb(204, 180, 180);  
box-shadow:4px 4px 4px 4px rgb(204, 180,  
180) }
```

Background

The CSS property to change the background color of an element to HunterLab 69.8392, 4.1981, 6.4504 is called "background". The background property can be set on classes, ids or directly on the HTML element.

```
.background, #background, body{  
background: rgb(204, 180, 180) }
```

If only the background color should be changed can be used:

```
.background{ background-color: rgb(204,  
180, 180) }
```

This example shows the color as background, it is applied via the CSS property "background".

To optimize and compress your CSS code, you can use our [online CSS compressor and optimizer](#) based on csstidy. If you want to create a linear or radial gradient as background or border, check our [CSS Gradient Generator](#).

Hey! You found this booklet interesting? Support Converting Colors with the new Membership Option!

The pro membership hides all ads, plus gives you double the colors in the color bucket, and more awesome pro features!

[Learn more, Memberships starting at \\$2.50/m!](#)

**Follow me
on Twitter!**

@ConvertingColor