

Converting Colors

HunterLab(69.7425, 5.1246,
8.1464)

Have a look what the booklet for
HunterLab(69.7425, 5.1246, 8.1464)
contains.

HunterLab(69.7425, 5.1246, 8.1464)	3
<i>Conversions</i>	4
<i>Details</i>	6
<i>Harmonies</i>	12
<i>Previews</i>	24
<i>Color Blindness Simulation</i>	28
<i>CSS Examples</i>	31

Color

**HunterLab(69.7425, 5.1246,
8.1464)**

Conversions

Conversions Part 1

Format	Color
Hex	CFB3B0
RGB	207, 179, 176
RGB Percent	81%, 70%, 69%
CMY	0.1882, 0.2980, 0.3098
CMYK	0.00, 0.14, 0.15, 0.19
HSL	6°, 24%, 75%
HSV	6°, 15%, 81%
XYZ	49.6887, 48.6402, 47.8438
YIQ	187.0300, 17.6510, 5.0030

Conversions

Conversions Part 2

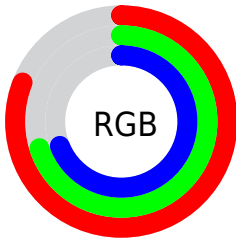
Format	Color
R _Y B	207, 179, 176
Decimal	13611952
CIE Lab	75.23, 9.57, 5.24
CIE LCh	75, 10.907, 28.710
Yxy	48.6423, 0.3399, 0.3328
Android (android.graphics.Color)	4291802032 (0xFFCFB3B0)
YUV	187.0300, -5.4378, 17.5137
Hunter-Lab	69.7425, 5.1246, 8.1464

Details

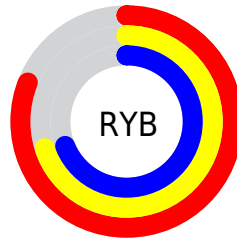
The HunterLab color $69.7425, 5.1246, 8.1464$ is a light color, and the websafe version is hex $CC9999$. A complement of this color would be $75.4451, -11.9339, -0.1115$, and the grayscale version is $70.5243, -3.7630, 3.8317$.

A 20% lighter version of the original color is $93.0069, 1.3571, 8.6665$, and $48.0129, 5.3815, 6.1319$ is the 20% darker color. If you saturate the color by 10%, you get $63.9466, 11.7488, 10.7340$, and if you desaturate by 10%, it is $75.8511, -1.1864, 5.5684$.

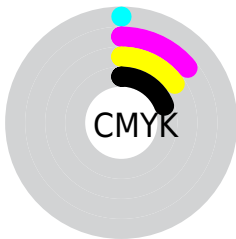
Distribution



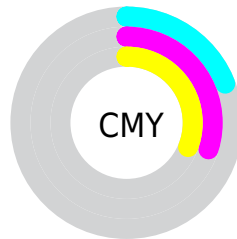
- Red (81%)
- Green (70%)
- Blue (69%)



- Red (81%)
- Yellow (70%)
- Blue (69%)



- Cyan (0%)
- Magenta (14%)
- Yellow (15%)
- Black (19%)



- Cyan (19%)
- Magenta (30%)
- Yellow (31%)

Brightness & Saturation Gradients

These gradients show how the HunterLab color 69.7425, 5.1246, 8.1464 changes by changing the brightness by 10 percent. The first figure shows a shift by +10% for each color and the second figure -10%.

Similar to the brightness gradients but the following saturation gradients show a change of the HunterLab color 69.7425, 5.1246, 8.1464 by changing the saturation by 10% instead.

■ 69.7425, 5.1246,
8.1464

■ 69.7425, 5.1246,
8.1464

195.2774, 1.8913,
16.8654

■ 58.5968, 5.2437,
7.2784

■ 93.8936, 4.7121,
9.9445

■ 48.1162, 5.3010,
6.4276

106.8363, 4.4321,
10.8732

■ 38.3479, 5.2861,
5.5935

120.3245, 4.1069,
11.8220

■ 29.3479, 5.1882,
4.7731

134.3370, 3.7394,
12.7909

■ 21.1888, 4.9918,
3.9606

148.8547, 3.3322,
13.7800

■ 13.9680, 4.6741,
3.1449

163.8607, 2.8872,

■ 7.6079, 5.0727,

14.7888

3.2688

179.3396, 2.4064,
15.8174

0.0000, NaN, NaN

0.0000, NaN, NaN

■ 69.7425, 5.1246,
8.1464

■ 69.7425, 5.1246,
8.1464

■ 63.9466, 11.7488,
10.7340

■ 75.8511, -1.1864,
5.5684

■ 58.5112, 18.6982,
13.3039

■ 82.2252, -7.2036,
3.0081

■ 53.5021, 25.9358,
15.8128

■ 88.8321, -12.9624,
0.4705

■ 48.9959, 33.3534,
18.1867

■ 95.5149, -19.2246,
-0.2077

■ 45.0791, 40.7306,

■ 95.9195, -19.8360,

20.3139

0.2787

■ 41.8412, 47.7026,
22.0471

■ 39.3583, 53.7740,
23.2305

■ 37.6687, 58.4221,
23.7639

■ 37.1051, 60.0641,
23.9155

Harmonies

Analogous

The Analogous color harmony consists of three colors that are next to each other on the color wheel.



69.7441, 6.3941, 3.5851



69.7425, 5.1246, 8.1464



69.7441, 1.4628, 11.3355

Triad

The Triadic color harmony groups three colors that are evenly spaced from another and form a triangle on the color wheel.



69.7441, 5.1225, 8.1475



69.7441, -11.9413, 8.4879



69.7441, -3.9467, -6.2319

Complementary

The Complementary color scheme is a pair of colors which are on the opposite of each other on the color wheel.



69.7425, 5.1246, 8.1464



75.4451, -11.9339, -0.1115

Split Complementary

Split-complementary colors differ from the complementary color scheme. The scheme consists of three colors, the original color and two neighbors of the complement color.



69.7441, -8.7657, -4.6914



69.7425, 5.1246, 8.1464



69.7441, -13.2984, 4.0069

Square

The Square scheme is like the rectangle color scheme, but the four colors are evenly spaced on the color wheel.



69.7441, 5.1225, 8.1475



69.7441, -8.3922, 11.5218



69.7441, -12.1525, -0.8546



69.7441, 1.0681, -4.9284

Rectangle

The Rectangle color scheme consists of four colors that form a rectangle on the color wheel.



69.7425, 5.1246, 8.1464



69.7441, -1.7869, 12.3711



69.7441, -12.1525, -0.8546



69.7441, -5.6423, -6.0276

Sweetspot

The Sweet Spot groups the original color and five complimentary colors.



69.7441, 5.1225, 8.1475



96.7591, -2.2232, 6.7477



69.7828, 11.4228, -5.5606



44.4860, -0.7547, 3.2364

0.0000, NaN, NaN



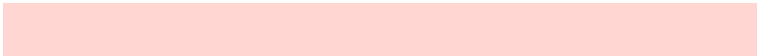
46.2646, -2.4686, 2.5136

Same Dimension

The Same Dimension uses a secret algorithm to generate beautiful new colors.



69.7441, 5.1225, 8.1475



85.8678, 9.1593, 11.3760



74.1763, -2.5578, 12.8307



34.6263, 0.7466, 3.1789



29.5594, 47.3194, 19.0428



7.4373, 9.7710, 4.7539

Inverse Universe

The Inverse Universe completely reimagines the original color for something new.



75.4451, -11.9339, -0.1115



94.6070, -17.0178, -1.2920



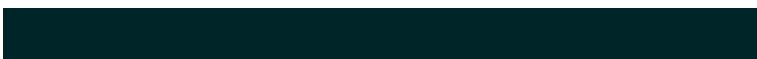
70.7779, -4.4527, -5.9155



36.3360, -4.3612, 0.7039



50.2914, -22.9765, -13.2603



12.1339, -5.7355, -2.7850

Previews

White Background



This preview shows how the HunterLab color 69.7425, 5.1246, 8.1464 looks on a white background.

Color Contrast Check

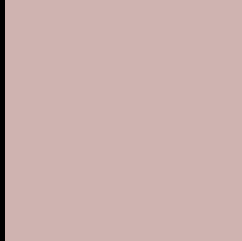
Large Text (above 18pt) WCAG AA × Fail

Any Text WCAG AA × Fail

Large Text (above 18pt) WCAG AAA × Fail

Any Text WCAG AAA × Fail

Black Background



This preview shows how the HunterLab color 69.7425, 5.1246, 8.1464 looks on a black background.

Color Contrast Check

Large Text (above 18pt) WCAG AA ✓ Pass

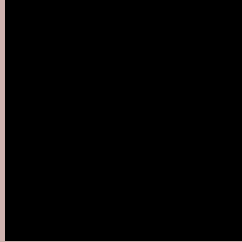
Any Text WCAG AA ✓ Pass

Large Text (above 18pt) WCAG AAA ✓ Pass

Any Text WCAG AAA ✓ Pass

If you want to check with other color combinations, try the [Color Contrast Checker](#).

HunterLab 69.7425, 5.1246, 8.1464 Background



This preview shows how black text looks on a background with the HunterLab color 69.7425, 5.1246, 8.1464.



This preview shows how white text looks on a background with the HunterLab color 69.7425, 5.1246,

8.1464.

Color Blindness Simulation

Color vision deficiency is a very complex topic, and I could not describe the different causes any better than Wikipedia does, so if you want to learn more, you should check out their [article about color blindness](#).

Dichromacy



Original Color

69.7425, 5.1246, 8.1464

Protanopia

69.9284, -3.1144, 6.8753

Deuteranopia

69.7425, 5.1246, 8.1464



Tritanopia

69.8292, 9.2421, 1.3393

Trichromacy



Original Color

69.7425, 5.1246, 8.1464

Protanomaly

69.8692, -0.3208, 7.3055

Deuteranomaly

69.7425, 5.1246, 8.1464

Tritanomaly

69.8540, 7.5553, 3.7469

Monochromacy



Original Color

69.7425, 5.1246, 8.1464

Achromatopsia

70.4935, -3.7614, 3.8300

Achromatomaly

70.1208, -0.6854, 5.3160

CSS Examples

Text

The CSS property to change the color of the text to HunterLab 69.7425, 5.1246, 8.1464 is called "color". The color property can be set on classes, ids or directly on the HTML element.

This example shows how text in the color `rgb(207, 179, 176)` looks like.

```
.text, #text, p{  
    color:rgb(207, 179, 176)  
}
```

If you want to add a text shadow in that color use the text-shadow property, you can generate a text shadow directly with our [CSS Text Shadow Generator](#).

Here you see how black text with a 4 pixel rgb(207, 179, 176) colored shadow looks like.

```
.shadow{ text-shadow: 4px 4px 2px rgb(207, 179, 176) }
```

Border

The CSS property to change the border of an element to HunterLab 69.7425, 5.1246, 8.1464 is called "border". The border property can be set on classes, ids or directly on the HTML element.

This example shows the color as border, it can be applied via the CSS property "border" or "border-color".

```
.border, #border, table{ border:4px solid rgb(207, 179, 176) }
```


If only the border color should be changed use the property border-color.

```
.border{ border-color:rgb(207, 179, 176) }
```

If you want to add a box shadow in that color use:

Here you see how a box with a 4 pixel rgb(207, 179, 176) colored shadow looks like.

```
.boxshadow{ -moz-box-shadow:4px 4px 4px  
4px rgb(207, 179, 176); -webkit-box-  
shadow:4px 4px 4px 4px rgb(207, 179, 176);  
box-shadow:4px 4px 4px 4px rgb(207, 179,  
176) }
```

Background

The CSS property to change the background color of an element to HunterLab 69.7425, 5.1246, 8.1464 is called "background". The background property can be set on classes, ids or directly on the HTML element.

```
.background, #background, body{  
background: rgb(207, 179, 176) }
```

If only the background color should be changed can be used:

```
.background{ background-color: rgb(207,  
179, 176) }
```

This example shows the color as background, it is applied via the CSS property "background".

To optimize and compress your CSS code, you can use our [online CSS compressor and optimizer](#) based on csstidy. If you want to create a linear or radial gradient as background or border, check our [CSS Gradient Generator](#).

Hey! You found this booklet interesting? Support Converting Colors with the new Membership Option!

The pro membership hides all ads, plus gives you double the colors in the color bucket, and more awesome pro features!

[Learn more, Memberships starting at \\$2.50/m!](#)

**Follow me
on Twitter!**

@ConvertingColor