

Converting Colors

HunterLab(69.8687, 5.3446,
3.8952)

Have a look what the booklet for
HunterLab(69.8687, 5.3446, 3.8952)
contains.

HunterLab(70.0179, 5.1554, 3.8982)	3
<i>Conversions</i>	4
<i>Details</i>	6
<i>Harmonies</i>	12
<i>Previews</i>	24
<i>Color Blindness Simulation</i>	28
<i>CSS Examples</i>	31

Color

**HunterLab(70.0179, 5.1554,
3.8982)**

Conversions

Conversions Part 1

Format	Color
Hex	CCB4BA
RGB	204, 180, 186
RGB Percent	80%, 71%, 73%
CMY	0.2000, 0.2941, 0.2706
CMYK	0.00, 0.12, 0.09, 0.20
HSL	345°, 19%, 75%
HSV	345°, 12%, 80%
XYZ	50.0860, 49.0251, 53.2773
YIQ	187.8600, 12.3780, 6.9540

Conversions

Conversions Part 2

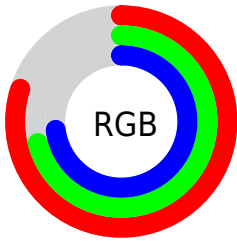
Format	Color
R _Y B	204, 180, 186
Decimal	13415610
CIE Lab	75.47, 9.60, 0.10
CIE LCh	75, 9.603, 0.611
Yxy	49.0272, 0.3287, 0.3217
Android (android.graphics.Color)	4291605690 (0xFFCCB4BA)
YUV	187.8600, -0.9170, 14.1548
Hunter-Lab	70.0179, 5.1554, 3.8982

Details

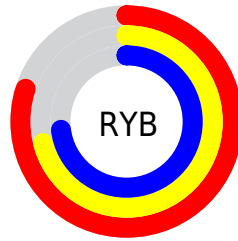
The HunterLab color $70.0179, 5.1554, 3.8982$ is a light color, and the websafe version is hex `CCCCCC`. A complement of this color would be $75.4768, -12.3931, 4.3210$, and the grayscale version is $70.8569, -3.7807, 3.8498$.

A 20% lighter version of the original color is $93.6278, 2.5158, 4.5411$, and $48.3283, 5.5492, 2.6534$ is the 20% darker color. If you saturate the color by 10%, you get $63.8523, 13.2922, 3.9426$, and if you desaturate by 10%, it is $76.5279, -2.7715, 4.1511$.

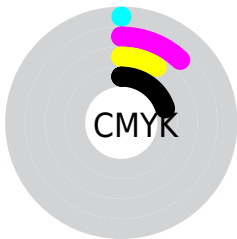
Distribution



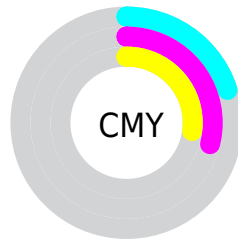
- Red (80%)
- Green (71%)
- Blue (73%)



- Red (80%)
- Yellow (71%)
- Blue (73%)



- Cyan (0%)
- Magenta (12%)
- Yellow (9%)
- Black (20%)



- Cyan (20%)
- Magenta (29%)
- Yellow (27%)

Brightness & Saturation Gradients

These gradients show how the HunterLab color 70.0179, 5.1554, 3.8982 changes by changing the brightness by 10 percent. The first figure shows a shift by +10% for each color and the second figure -10%.

Similar to the brightness gradients but the following saturation gradients show a change of the HunterLab color 70.0179, 5.1554, 3.8982 by changing the saturation by 10% instead.

■ 70.0179, 5.1554,
3.8982

■ 70.0179, 5.1554,
3.8982

195.6654, 1.9262,
10.7746

■ 58.8567, 5.2743,
3.2868

■ 94.1976, 4.7438,
5.2246

■ 48.3596, 5.3314,
2.7102

107.1537, 4.4642,
5.9341

■ 38.5735, 5.3164,
2.1718

120.6547, 4.1394,
6.6731

■ 29.5544, 5.2185,
1.6747

134.6795, 3.7724,
7.4405

■ 21.3740, 5.0225,
1.2227

149.2092, 3.3656,
8.2352

■ 14.1293, 4.7055,
0.8207

164.2267, 2.9211,

■ 7.7806, 4.9624,

9.0563

0.4781

179.7168, 2.4407,
9.9031

0.0000, NaN, NaN

0.0000, NaN, NaN

■ 70.0179, 5.1554,
3.8982

■ 70.0179, 5.1554,
3.8982

■ 63.8523, 13.2922,
3.9426

■ 76.5279, -2.7715,
4.1511

■ 58.0879, 21.6143,
4.3413

■ 83.3288, -10.4857,
4.6461

■ 52.8024, 30.0260,
5.1621

■ 90.3829, -18.0078,
5.3424

■ 48.0875, 38.3277,
6.4664

■ 95.4390, -22.1009,
3.6501

■ 44.0473, 46.1672,

■ 95.6961, -20.6482,

8.2889

-0.0096

■ 40.7865, 53.0201,
10.6029

■ 38.3878, 58.2628,
13.2836

■ 36.8752, 61.3889,
16.0981

■ 36.1612, 62.5876,
18.2473

Harmonies

Analogous

The Analogous color harmony consists of three colors that are next to each other on the color wheel.



70.0194, 3.9853, -0.3632



70.0179, 5.1554, 3.8982



70.0194, 3.8888, 7.8872

Triad

The Triadic color harmony groups three colors that are evenly spaced from another and form a triangle on the color wheel.



70.0194, 5.1534, 3.8994



70.0194, -8.1055, 10.5522



70.0194, -7.9489, -3.7721

Complementary

The Complementary color scheme is a pair of colors which are on the opposite of each other on the color wheel.



70.0179, 5.1554, 3.8982



75.4768, -12.3931, 4.3210

Split Complementary

Split-complementary colors differ from the complementary color scheme. The scheme consists of three colors, the original color and two neighbors of the complement color.



70.0194, -11.0552, -0.5252



70.0179, 5.1554, 3.8982



70.0194, -11.1439, 7.7437

Square

The Square scheme is like the rectangle color scheme, but the four colors are evenly spaced on the color wheel.



70.0194, 5.1534, 3.8994



70.0194, -3.8324, 11.5759



70.0194, -12.2102, 3.7232



70.0194, -3.6472, -4.9588

Rectangle

The Rectangle color scheme consists of four colors that form a rectangle on the color wheel.



70.0179, 5.1554, 3.8982



70.0194, 1.8543, 9.8977



70.0194, -12.2102, 3.7232



70.0194, -9.1636, -2.8757

Sweetspot

The Sweet Spot groups the original color and five complimentary colors.



70.0194, 5.1534, 3.8994



96.5302, -1.2564, 5.2380



70.0073, 6.2760, -5.1338



44.3606, -0.2240, 2.4090

0.0000, NaN, NaN



46.2646, -2.4686, 2.5136

Same Dimension

The Same Dimension uses a secret algorithm to generate beautiful new colors.



70.0194, 5.1534, 3.8994



88.1439, 9.1415, 4.9939



71.5908, 1.1296, 8.3708



33.5543, 1.5282, 1.8456



28.7107, 49.7357, 14.1504



6.6165, 11.6476, 1.8215

Inverse Universe

The Inverse Universe completely reimagines the original color for something new.



70.0194, 5.1534, 3.8994



88.1439, 9.1415, 4.9939



73.7920, -8.3882, -0.5769



33.5543, 1.5282, 1.8456



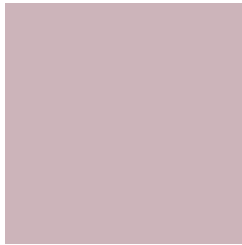
28.7107, 49.7357, 14.1504



6.6165, 11.6476, 1.8215

Previews

White Background



This preview shows how the HunterLab color 70.0179, 5.1554, 3.8982 looks on a white background.

Color Contrast Check

Large Text (above 18pt) WCAG AA × Fail

Any Text WCAG AA × Fail

Large Text (above 18pt) WCAG AAA × Fail

Any Text WCAG AAA × Fail

Black Background



This preview shows how the HunterLab color 70.0179, 5.1554, 3.8982 looks on a black background.

Color Contrast Check

Large Text (above 18pt) WCAG AA ✓ Pass

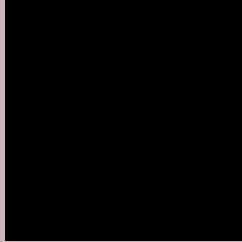
Any Text WCAG AA ✓ Pass

Large Text (above 18pt) WCAG AAA ✓ Pass

Any Text WCAG AAA ✓ Pass

If you want to check with other color combinations, try the [Color Contrast Checker](#).

HunterLab 70.0179, 5.1554, 3.8982 Background



This preview shows how black text looks on a background with the HunterLab color 70.0179, 5.1554, 3.8982.



This preview shows how white text looks on a background with the HunterLab color 70.0179, 5.1554,

3.8982.

Color Blindness Simulation

Color vision deficiency is a very complex topic, and I could not describe the different causes any better than Wikipedia does, so if you want to learn more, you should check out their [article about color blindness](#).

Dichromacy



Original Color

70.0179, 5.1554, 3.8982

Protanopia

70.0453, -2.1102, 2.3729

Deuteranopia

70.0179, 5.1554, 3.8982



Tritanopia

70.0497, 7.1735, 0.5873

Trichromacy



Original Color

70.0179, 5.1554, 3.8982

Protanomaly

69.9765, 0.6421, 2.8193

Deuteranomaly

70.0179, 5.1554, 3.8982

Tritanomaly

69.9550, 6.6692, 1.9344

Monochromacy



Original Color

70.0179, 5.1554, 3.8982

Achromatopsia

70.9145, -3.7838, 3.8529

Achromatomaly

70.5373, -0.5385, 3.9380

CSS Examples

Text

The CSS property to change the color of the text to HunterLab 70.0179, 5.1554, 3.8982 is called "color". The color property can be set on classes, ids or directly on the HTML element.

This example shows how text in the color `rgb(204, 180, 186)` looks like.

```
.text, #text, p{  
    color:rgb(204, 180, 186)  
}
```

If you want to add a text shadow in that color use the text-shadow property, you can generate a text shadow directly with our [CSS Text Shadow Generator](#).

Here you see how black text with a 4 pixel rgb(204, 180, 186) colored shadow looks like.

```
.shadow{ text-shadow: 4px 4px 2px rgb(204, 180, 186) }
```

Border

The CSS property to change the border of an element to HunterLab 70.0179, 5.1554, 3.8982 is called "border".

The border property can be set on classes, ids or directly on the HTML element.

This example shows the color as border, it can be applied via the CSS property "border" or "border-color".

```
.border, #border, table{ border:4px solid rgb(204, 180, 186) }
```


If only the border color should be changed use the property `border-color`.

```
.border{ border-color:rgb(204, 180, 186) }
```

If you want to add a box shadow in that color use:

Here you see how a box with a 4 pixel `rgb(204, 180, 186)` colored shadow looks like.

```
.boxshadow{ -moz-box-shadow:4px 4px 4px  
4px rgb(204, 180, 186); -webkit-box-  
shadow:4px 4px 4px 4px rgb(204, 180, 186);  
box-shadow:4px 4px 4px 4px rgb(204, 180,  
186) }
```

Background

The CSS property to change the background color of an element to HunterLab 70.0179, 5.1554, 3.8982 is called "background". The background property can be set on classes, ids or directly on the HTML element.

```
.background, #background, body{  
background: rgb(204, 180, 186) }
```

If only the background color should be changed can be used:

```
.background{ background-color: rgb(204,  
180, 186) }
```

This example shows the color as background, it is applied via the CSS property "background".

To optimize and compress your CSS code, you can use our [online CSS compressor and optimizer](#) based on csstidy. If you want to create a linear or radial gradient as background or border, check our [CSS Gradient Generator](#).

Hey! You found this booklet interesting? Support Converting Colors with the new Membership Option!

The pro membership hides all ads, plus gives you double the colors in the color bucket, and more awesome pro features!

[Learn more, Memberships starting at \\$2.50/m!](#)

**Follow me
on Twitter!**

@ConvertingColor