

Converting Colors

HunterLab(69.9410, 17.6991,
4.9655)

Have a look what the booklet for
HunterLab(69.9410, 17.6991,
4.9655) contains.

HunterLab(69.9410, 17.6991, 4.9655)	3
<i>Conversions</i>	4
<i>Details</i>	6
<i>Harmonies</i>	12
<i>Previews</i>	24
<i>Color Blindness Simulation</i>	28
<i>CSS Examples</i>	31

Color

**HunterLab(69.9410, 17.6991,
4.9655)**

Conversions

Conversions Part 1

Format	Color
Hex	E3ABB8
RGB	227, 171, 184
RGB Percent	89%, 67%, 72%
CMY	0.1098, 0.3294, 0.2784
CMYK	0.00, 0.25, 0.19, 0.11
HSL	346°, 50%, 78%
HSV	346°, 25%, 89%
XYZ	54.8932, 48.9174, 51.8962
YIQ	189.2260, 29.2030, 15.9150

Conversions

Conversions Part 2

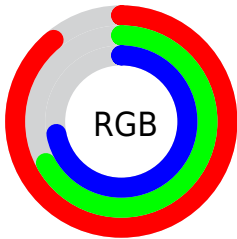
Format	Color
RYB	227, 171, 184
Decimal	14920632
CIELab	75.40, 22.42, 1.36
CIElCh	75, 22.460, 3.473
Yxy	48.9197, 0.3525, 0.3142
Android (android.graphics.Color)	4293110712 (0xFFE3ABB8)
YUV	189.2260, -2.5764, 33.1278
Hunter-Lab	69.9410, 17.6991, 4.9655

Details

The HunterLab color $69.9410, 17.6991, 4.9655$ is a light color, and the websafe version is hex $CC9999$. A complement of this color would be $82.7360, -23.0997, 4.9847$, and the grayscale version is $71.4344, -3.8116, 3.8812$.

A 20% lighter version of the original color is $90.8237, 7.0070, 2.2720$, and $48.2219, 16.9247, 3.6091$ is the 20% darker color. If you saturate the color by 10%, you get $63.5460, 27.1429, 5.7156$, and if you desaturate by 10%, it is $76.8252, 8.4455, 4.6351$.

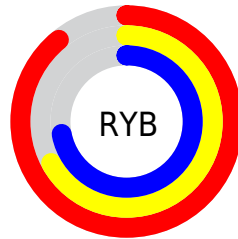
Distribution



Red (89%)

Green (67%)

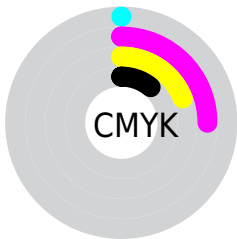
Blue (72%)



Red (89%)

Yellow (67%)

Blue (72%)

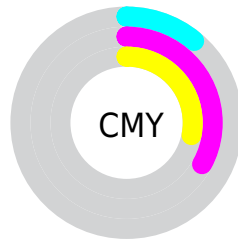


Cyan (0%)

Magenta (25%)

Yellow (19%)

Black (11%)



Cyan (11%)

Magenta (33%)

Yellow (28%)

Brightness & Saturation Gradients

These gradients show how the HunterLab color 69.9410, 17.6991, 4.9655 changes by changing the brightness by 10 percent. The first figure shows a shift by +10% for each color and the second figure -10%.

Similar to the brightness gradients but the following saturation gradients show a change of the HunterLab color 69.9410, 17.6991, 4.9655 by changing the saturation by 10% instead.

69.9410, 17.6991,
4.9655

69.9410, 17.6991,
4.9655

195.5572, 18.9198,
12.2854

58.7842, 17.2252,
4.2930

94.1128, 18.3982,
6.4050

48.2917, 16.6613,
3.6511

107.0652, 18.6427,
7.1671

38.5105, 15.9929,
3.0427

120.5626, 18.8239,
7.9566

29.4968, 15.2051,
2.4693

134.5839, 18.9464,
8.7725

21.3223, 14.2796,
1.9329

149.1103, 19.0140,
9.6141

14.0843, 13.1968,
1.4352

164.1246, 19.0302,

7.7328, 12.9303,

10.4805

1.1504

179.6116, 18.9979,
11.3711

0.0000, INF, NaN

0.0000, NaN, NaN

■ 69.9410, 17.6991,
4.9655

■ 69.9410, 17.6991,
4.9655

■ 63.5460, 27.1429,
5.7156

■ 76.8252, 8.4455,
4.6351

■ 57.7290, 36.6475,
6.9520

■ 84.1179, -0.5596,
4.6520

■ 52.6028, 45.9336,
8.7316

■ 91.7602, -9.3154,
4.9574

■ 48.2904, 54.5330,
11.0646

■ 97.4625, -14.3627,
2.9020

■ 44.9084, 61.7884,

■ 97.5044, -14.1294,

13.8738

2.3057

■ 42.5349, 66.9896,
16.9619

■ 41.1632, 69.6799,
20.0244

■ 40.7249, 70.3666,
21.4782

Harmonies

Analogous

The Analogous color harmony consists of three colors that are next to each other on the color wheel.



69.9426, 15.3647, -5.3756



69.9410, 17.6991, 4.9655



69.9426, 14.0109, 13.6403

Triad

The Triadic color harmony groups three colors that are evenly spaced from another and form a triangle on the color wheel.



69.9426, 17.6966, 4.9668



69.9426, -14.5811, 18.0725



69.9426, -12.5708, -15.7628

Complementary

The Complementary color scheme is a pair of colors which are on the opposite of each other on the color wheel.



69.9410, 17.6991, 4.9655



82.7360, -23.0997, 4.9847

Split Complementary

Split-complementary colors differ from the complementary color scheme. The scheme consists of three colors, the original color and two neighbors of the complement color.



69.9426, -19.8723, -7.7001



69.9410, 17.6991, 4.9655



69.9426, -20.9837, 11.8923

Square

The Square scheme is like the rectangle color scheme, but the four colors are evenly spaced on the color wheel.



69.9426, 17.6966, 4.9668



69.9426, -4.9611, 20.4662



69.9426, -22.8625, 2.6274



69.9426, -2.5019, -18.3349

Rectangle

The Rectangle color scheme consists of four colors that form a rectangle on the color wheel.



69.9410, 17.6991, 4.9655



69.9426, 8.7582, 17.6121



69.9426, -22.8625, 2.6274



69.9426, -15.4099, -13.5514

Sweetspot

The Sweet Spot groups the original color and five complimentary colors.



69.9426, 17.6966, 4.9668



93.9594, 1.7782, 5.2710



69.9717, 20.7691, -18.0996



43.2332, 1.1095, 2.4357

0.0000, NaN, NaN



46.2646, -2.4686, 2.5136

Same Dimension

The Same Dimension uses a secret algorithm to generate beautiful new colors.



69.9426, 17.6966, 4.9668



75.6950, 26.1262, 6.0750



73.7313, 7.9375, 14.5878



37.9770, 1.7561, 2.1702



31.1245, 53.8256, 16.0500



8.5437, 14.9374, 3.1486

Inverse Universe

The Inverse Universe completely reimagines the original color for something new.



69.9426, 17.6966, 4.9668



75.6950, 26.1262, 6.0750



78.3109, -13.4524, -7.0026



37.9770, 1.7561, 2.1702



31.1245, 53.8256, 16.0500



8.5437, 14.9374, 3.1486

Previews

White Background



This preview shows how the HunterLab color 69.9410, 17.6991, 4.9655 looks on a white background.

Color Contrast Check

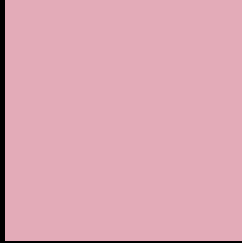
Large Text (above 18pt) WCAG AA × Fail

Any Text WCAG AA × Fail

Large Text (above 18pt) WCAG AAA × Fail

Any Text WCAG AAA × Fail

Black Background



This preview shows how the HunterLab color 69.9410, 17.6991, 4.9655 looks on a black background.

Color Contrast Check

Large Text (above 18pt) WCAG AA ✓ Pass

Any Text WCAG AA ✓ Pass

Large Text (above 18pt) WCAG AAA ✓ Pass

Any Text WCAG AAA ✓ Pass

If you want to check with other color combinations, try the [Color Contrast Checker](#).

HunterLab 69.9410, 17.6991, 4.9655 Background



This preview shows how black text looks on a background with the HunterLab color 69.9410, 17.6991, 4.9655.



This preview shows how white text looks on a background with the HunterLab color 69.9410, 17.6991,

4.9655.

Color Blindness Simulation

Color vision deficiency is a very complex topic, and I could not describe the different causes any better than Wikipedia does, so if you want to learn more, you should check out their [article about color blindness](#).

Dichromacy



Original Color

69.9410, 17.6991, 4.9655

Protanopia

70.1392, -1.5983, 1.0361

Deuteranopia

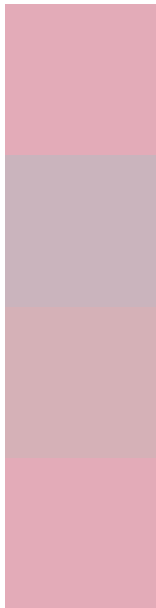
69.9993, 4.8535, 5.7331



Tritanopia

69.9410, 17.6991, 4.9655

Trichromacy



Original Color

69.9410, 17.6991, 4.9655

Protanomaly

69.9094, 4.9759, 2.3340

Deuteranomaly

70.0067, 9.3362, 5.3594

Tritanomaly

69.9410, 17.6991, 4.9655

Monochromacy



Original Color

69.9410, 17.6991, 4.9655

Achromatopsia

71.3359, -3.8063, 3.8758

Achromatomaly

70.5268, 3.9514, 4.0043

CSS Examples

Text

The CSS property to change the color of the text to HunterLab 69.9410, 17.6991, 4.9655 is called "color". The color property can be set on classes, ids or directly on the HTML element.

This example shows how text in the color `rgb(227, 171, 184)` looks like.

```
.text, #text, p{  
    color:rgb(227, 171, 184)  
}
```

If you want to add a text shadow in that color use the text-shadow property, you can generate a text shadow directly with our [CSS Text Shadow Generator](#).

Here you see how black text with a 4 pixel rgb(227, 171, 184) colored shadow looks like.

```
.shadow{ text-shadow: 4px 4px 2px rgb(227, 171, 184) }
```

Border

The CSS property to change the border of an element to HunterLab 69.9410, 17.6991, 4.9655 is called "border". The border property can be set on classes, ids or directly on the HTML element.

This example shows the color as border, it can be applied via the CSS property "border" or "border-color".

```
.border, #border, table{ border:4px solid rgb(227, 171, 184) }
```


If only the border color should be changed use the property `border-color`.

```
.border{ border-color:rgb(227, 171, 184) }
```

If you want to add a box shadow in that color use:

Here you see how a box with a 4 pixel `rgb(227, 171, 184)` colored shadow looks like.

```
.boxshadow{ -moz-box-shadow:4px 4px 4px  
4px rgb(227, 171, 184); -webkit-box-  
shadow:4px 4px 4px 4px rgb(227, 171, 184);  
box-shadow:4px 4px 4px 4px rgb(227, 171,  
184) }
```

Background

The CSS property to change the background color of an element to HunterLab 69.9410, 17.6991, 4.9655 is called "background". The background property can be set on classes, ids or directly on the HTML element.

```
.background, #background, body{  
background: rgb(227, 171, 184) }
```

If only the background color should be changed can be used:

```
.background{ background-color: rgb(227,  
171, 184) }
```

This example shows the color as background, it is applied via the CSS property "background".

To optimize and compress your CSS code, you can use our [online CSS compressor and optimizer](#) based on csstidy. If you want to create a linear or radial gradient as background or border, check our [CSS Gradient Generator](#).

Hey! You found this booklet interesting? Support Converting Colors with the new Membership Option!

The pro membership hides all ads, plus gives you double the colors in the color bucket, and more awesome pro features!

[Learn more, Memberships starting at \\$2.50/m!](#)

**Follow me
on Twitter!**

@ConvertingColor