

Converting Colors

HunterLab(70.0660, 2.4555,
2.9577)

Have a look what the booklet for
HunterLab(70.0660, 2.4555, 2.9577)
contains.

HunterLab(70.0660, 2.4555, 2.9577)	3
<i>Conversions</i>	4
<i>Details</i>	6
<i>Harmonies</i>	12
<i>Previews</i>	24
<i>Color Blindness Simulation</i>	28
<i>CSS Examples</i>	31

Color

**HunterLab(70.0660, 2.4555,
2.9577)**

Conversions

Conversions Part 1

Format	Color
Hex	C6B6BC
RGB	198, 182, 188
RGB Percent	78%, 71%, 74%
CMY	0.2235, 0.2863, 0.2627
CMYK	0.00, 0.08, 0.05, 0.22
HSL	338°, 12%, 75%
HSV	338°, 8%, 78%
XYZ	49.0937, 49.0924, 54.4651
YIQ	187.4680, 7.6100, 5.2580

Conversions

Conversions Part 2

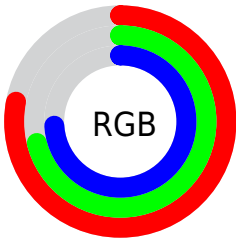
Format	Color
R _Y B	198, 182, 188
Decimal	13022908
CIE Lab	75.51, 6.74, -0.99
CIE LCh	76, 6.809, 351.657
Yxy	49.0946, 0.3216, 0.3216
Android (android.graphics.Color)	4291212988 (0xFFC6B6BC)
YUV	187.4680, 0.2623, 9.2366
Hunter-Lab	70.0660, 2.4555, 2.9577

Details

The HunterLab color $70.0660, 2.4555, 2.9577$ is a light color, and the websafe version is hex `CCCCCC`. A complement of this color would be $73.5801, -9.8904, 4.9804$, and the grayscale version is $70.6884, -3.7718, 3.8406$.

A 20% lighter version of the original color is $94.3084, 1.7922, 4.3361$, and $48.3519, 2.9695, 1.7392$ is the 20% darker color. If you saturate the color by 10%, you get $64.0612, 10.6187, 1.8256$, and if you desaturate by 10%, it is $76.3828, -5.5289, 4.3739$.

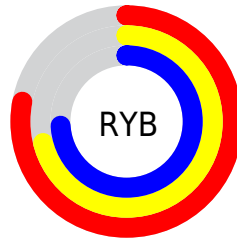
Distribution



Red (78%)

Green (71%)

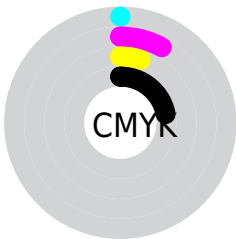
Blue (74%)



Red (78%)

Yellow (71%)

Blue (74%)

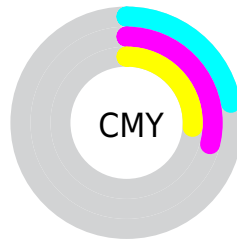


Cyan (0%)

Magenta (8%)

Yellow (5%)

Black (22%)



Cyan (22%)

Magenta (29%)

Yellow (26%)

Brightness & Saturation Gradients

These gradients show how the HunterLab color 70.0660, 2.4555, 2.9577 changes by changing the brightness by 10 percent. The first figure shows a shift by +10% for each color and the second figure -10%.

Similar to the brightness gradients but the following saturation gradients show a change of the HunterLab color 70.0660, 2.4555, 2.9577 by changing the saturation by 10% instead.

■ 70.0660, 2.4555,
2.9577

■ 70.0660, 2.4555,
2.9577

195.7331, -1.8013,
9.4537

■ 58.9021, 2.7139,
2.3986

■ 94.2507, 1.7848,
4.1875

■ 48.4021, 2.9181,
1.8774

107.2091, 1.3837,
4.8519

■ 38.6130, 3.0597,
1.3986

120.7124, 0.9421,
5.5476

■ 29.5905, 3.1297,
0.9660

134.7393, 0.4623,
6.2732

■ 21.4064, 3.1157,
0.5850

149.2710, -0.0536,
7.0277

■ 14.1576, 2.9985,
0.2629

164.2906, -0.6039,

■ 7.8103, 3.3417,

7.8099

-0.0992

179.7826, -1.1869,
8.6188

0.0000, NaN, NaN

0.0000, NaN, NaN

■ 70.0660, 2.4555,
2.9577

■ 70.0660, 2.4555,
2.9577

■ 64.0612, 10.6187,
1.8256

■ 76.3828, -5.5289,
4.3739

■ 58.4171, 18.9406,
1.0427

■ 82.9642, -13.3312,
6.0169

■ 53.2014, 27.3419,
0.6950

■ 89.7776, -20.9690,
7.8461

■ 48.4940, 35.6573,
0.8804

■ 94.6944, -25.4515,
7.4935

■ 44.3873, 43.5910,

■ 95.0900, -23.2039,

1.6979

1.8520

■ 40.9786, 50.6892,
3.2194

■ 95.2606, -22.2376,
-0.5738

■ 38.3533, 56.3739,
5.4453

■ 36.5566, 60.0977,
8.2571

■ 35.5228, 61.7290,
11.3737

Harmonies

Analogous

The Analogous color harmony consists of three colors that are next to each other on the color wheel.



70.0675, 1.1520, 0.0826



70.0660, 2.4555, 2.9577



70.0675, 2.0719, 5.9411

Triad

The Triadic color harmony groups three colors that are evenly spaced from another and form a triangle on the color wheel.



70.0675, 2.4536, 2.9589



70.0675, -6.0000, 9.0417



70.0675, -7.5209, -0.9366

Complementary

The Complementary color scheme is a pair of colors which are on the opposite of each other on the color wheel.



70.0660, 2.4555, 2.9577



73.5801, -9.8904, 4.9804

Split Complementary

Split-complementary colors differ from the complementary color scheme. The scheme consists of three colors, the original color and two neighbors of the complement color.



70.0675, -9.3730, 1.6180



70.0660, 2.4555, 2.9577



70.0675, -8.5060, 7.3508

Square

The Square scheme is like the rectangle color scheme, but the four colors are evenly spaced on the color wheel.



70.0675, 2.4536, 2.9589



70.0675, -2.8469, 9.3646



70.0675, -9.7303, 4.6584



70.0675, -4.6334, -2.2316

Rectangle

The Rectangle color scheme consists of four colors that form a rectangle on the color wheel.



70.0660, 2.4555, 2.9577



70.0675, 0.9170, 7.5961



70.0675, -9.7303, 4.6584



70.0675, -8.2831, -0.1915

Sweetspot

The Sweet Spot groups the original color and five complimentary colors.



70.0675, 2.4536, 2.9589



98.2779, -3.1897, 5.0366



69.8029, 2.1943, -2.3296



45.5072, -1.5250, 2.3391

0.0000, NaN, NaN



46.2646, -2.4686, 2.5136

Same Dimension

The Same Dimension uses a secret algorithm to generate beautiful new colors.



70.0675, 2.4536, 2.9589



91.5485, 5.4959, 3.5916



70.4350, 0.5285, 6.1555



32.7133, 1.6576, 1.3194



28.5421, 50.0663, 9.2409



6.3226, 11.3029, 0.4006

Inverse Universe

The Inverse Universe completely reimagines the original color for something new.



70.0675, 2.4536, 2.9589



91.5485, 5.4959, 3.5916



73.1872, -7.9445, 1.6767



32.7133, 1.6576, 1.3194



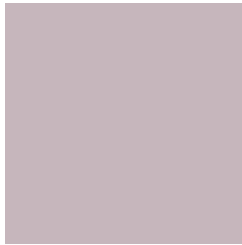
28.5421, 50.0663, 9.2409



6.3226, 11.3029, 0.4006

Previews

White Background



This preview shows how the HunterLab color 70.0660, 2.4555, 2.9577 looks on a white background.

Color Contrast Check

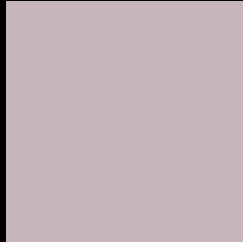
Large Text (above 18pt) WCAG AA × Fail

Any Text WCAG AA × Fail

Large Text (above 18pt) WCAG AAA × Fail

Any Text WCAG AAA × Fail

Black Background



This preview shows how the HunterLab color 70.0660, 2.4555, 2.9577 looks on a black background.

Color Contrast Check

Large Text (above 18pt) WCAG AA ✓ Pass

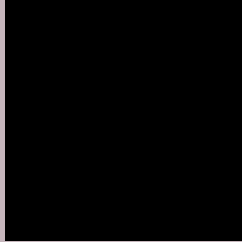
Any Text WCAG AA ✓ Pass

Large Text (above 18pt) WCAG AAA ✓ Pass

Any Text WCAG AAA ✓ Pass

If you want to check with other color combinations, try the [Color Contrast Checker](#).

HunterLab 70.0660, 2.4555, 2.9577 Background



This preview shows how black text looks on a background with the HunterLab color 70.0660, 2.4555, 2.9577.



This preview shows how white text looks on a background with the HunterLab color 70.0660, 2.4555,

2.9577.

Color Blindness Simulation

Color vision deficiency is a very complex topic, and I could not describe the different causes any better than Wikipedia does, so if you want to learn more, you should check out their [article about color blindness](#).

Dichromacy



Original Color

70.0660, 2.4555, 2.9577

Protanopia

70.0764, -1.9406, 1.9300

Deuteranopia

69.9785, 5.1457, 2.9004



Tritanopia

70.0928, 4.4839, -0.4032

Trichromacy



Original Color

70.0660, 2.4555, 2.9577

Protanomaly

70.1153, -0.3401, 2.4878

Deuteranomaly

70.0686, 3.9612, 2.9871

Tritanomaly

69.9969, 3.9694, 0.9602

Monochromacy



Original Color

70.0660, 2.4555, 2.9577

Achromatopsia

70.4935, -3.7614, 3.8300

Achromatomaly

70.2582, -1.4985, 3.5923

CSS Examples

Text

The CSS property to change the color of the text to HunterLab 70.0660, 2.4555, 2.9577 is called "color". The color property can be set on classes, ids or directly on the HTML element.

This example shows how text in the color `rgb(198, 182, 188)` looks like.

```
.text, #text, p{  
    color:rgb(198, 182, 188)  
}
```

If you want to add a text shadow in that color use the text-shadow property, you can generate a text shadow directly with our [CSS Text Shadow Generator](#).

Here you see how black text with a 4 pixel rgb(198, 182, 188) colored shadow looks like.

```
.shadow{ text-shadow: 4px 4px 2px rgb(198, 182, 188) }
```

Border

The CSS property to change the border of an element to HunterLab 70.0660, 2.4555, 2.9577 is called "border". The border property can be set on classes, ids or directly on the HTML element.

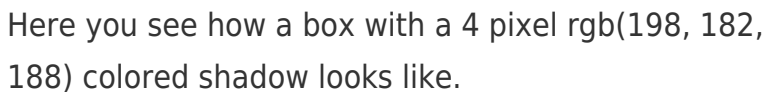
This example shows the color as border, it can be applied via the CSS property "border" or "border-color".

```
.border, #border, table{ border:4px solid rgb(198, 182, 188) }
```


If only the border color should be changed use the property `border-color`.

```
.border{ border-color:rgb(198, 182, 188) }
```

If you want to add a box shadow in that color use:



Here you see how a box with a 4 pixel `rgb(198, 182, 188)` colored shadow looks like.

```
.boxshadow{ -moz-box-shadow:4px 4px 4px 4px rgb(198, 182, 188); -webkit-box-shadow:4px 4px 4px 4px rgb(198, 182, 188); box-shadow:4px 4px 4px 4px rgb(198, 182, 188) }
```

Background

The CSS property to change the background color of an element to HunterLab 70.0660, 2.4555, 2.9577 is called "background". The background property can be set on classes, ids or directly on the HTML element.

```
.background, #background, body{  
background: rgb(198, 182, 188) }
```

If only the background color should be changed can be used:

```
.background{ background-color: rgb(198,  
182, 188) }
```

This example shows the color as background, it is applied via the CSS property "background".

To optimize and compress your CSS code, you can use our [online CSS compressor and optimizer](#) based on csstidy. If you want to create a linear or radial gradient as background or border, check our [CSS Gradient Generator](#).

Hey! You found this booklet interesting? Support Converting Colors with the new Membership Option!

The pro membership hides all ads, plus gives you double the colors in the color bucket, and more awesome pro features!

[Learn more, Memberships starting at \\$2.50/m!](#)

**Follow me
on Twitter!**

@ConvertingColor