

Converting Colors

HunterLab(70.1604, 0.2850,
10.6788)

Have a look what the booklet for
HunterLab(70.1604, 0.2850,
10.6788) contains.

HunterLab(70.1604, 0.2850, 10.6788)	3
<i>Conversions</i>	4
<i>Details</i>	6
<i>Harmonies</i>	12
<i>Previews</i>	24
<i>Color Blindness Simulation</i>	28
<i>CSS Examples</i>	31

Color

**HunterLab(70.1604, 0.2850,
10.6788)**

Conversions

Conversions Part 1

Format	Color
Hex	C9B7AB
RGB	201, 183, 171
RGB Percent	79%, 72%, 67%
CMY	0.2118, 0.2823, 0.3294
CMYK	0.00, 0.09, 0.15, 0.21
HSL	24°, 22%, 73%
HSV	24°, 15%, 79%
XYZ	48.3716, 49.2248, 45.4800
YIQ	187.0140, 14.5800, 0.0840

Conversions

Conversions Part 2

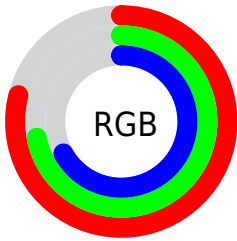
Format	Color
RYB	201, 191, 171
Decimal	13219755
CIELab	75.59, 4.41, 8.41
CIElCh	76, 9.498, 62.358
Yxy	49.2270, 0.3381, 0.3440
Android (android.graphics.Color)	4291409835 (0xFFC9B7AB)
YUV	187.0140, -7.8949, 12.2657
Hunter-Lab	70.1604, 0.2850, 10.6788

Details

The HunterLab color $70.1604, 0.2850, 10.6788$ is a light color, and the websafe version is hex `CCCCCC`. A complement of this color would be $70.1920, -7.0404, -3.5475$, and the grayscale version is $70.5286, -3.7632, 3.8320$.

A 20% lighter version of the original color is $94.0659, -1.7364, 12.5814$, and $48.4770, 1.1253, 8.5453$ is the 20% darker color. If you saturate the color by 10%, you get $66.1474, 3.5666, 14.6169$, and if you desaturate by 10%, it is $74.3249, -2.7063, 6.3851$.

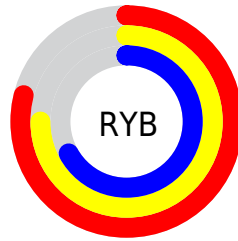
Distribution



Red (79%)

Green (72%)

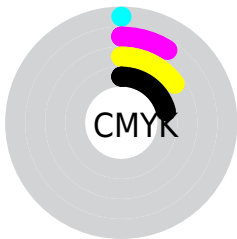
Blue (67%)



Red (79%)

Yellow (75%)

Blue (67%)

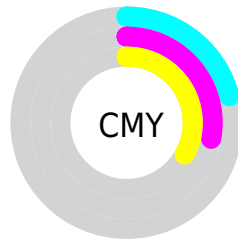


Cyan (0%)

Magenta (9%)

Yellow (15%)

Black (21%)



Cyan (21%)

Magenta (28%)

Yellow (33%)

Brightness & Saturation Gradients

These gradients show how the HunterLab color 70.1604, 0.2850, 10.6788 changes by changing the brightness by 10 percent. The first figure shows a shift by +10% for each color and the second figure -10%.

Similar to the brightness gradients but the following saturation gradients show a change of the HunterLab color 70.1604, 0.2850, 10.6788 by changing the saturation by 10% instead.

■ 70.1604, 0.2850,
10.6788

■ 70.1604, 0.2850,
10.6788

195.8661, -4.8177,
20.5838

■ 58.9912, 0.6584,
9.6435

■ 94.3549, -0.5998,
12.7827

■ 48.4856, 0.9847,
8.6134

107.3179, -1.1009,
13.8527

■ 38.6904, 1.2565,
7.5848

120.8256, -1.6388,
14.9367

■ 29.6613, 1.4668,
6.5503

134.8567, -2.2114,
16.0353

■ 21.4700, 1.6057,
5.4972

149.3925, -2.8169,
17.1490

■ 14.2130, 1.6582,
4.4026

164.4160, -3.4540,

■ 7.8683, 2.0200,

18.2782

4.8607

179.9119, -4.1213,
19.4231

0.0000, NaN, NaN

0.0000, NaN, NaN

■ 70.1604, 0.2850,
10.6788

■ 70.1604, 0.2850,
10.6788

■ 66.1474, 3.5666,
14.6169

■ 74.3249, -2.7063,
6.3851

■ 62.2972, 7.1682,
18.1437

■ 78.6224, -5.4260,
1.7774

■ 58.6295, 11.1065,
21.2004

■ 83.0421, -7.9012,
-3.1052

■ 55.1646, 15.3919,
23.7206

■ 87.5737, -10.1555,
-8.2307

■ 51.9250, 20.0193,

■ 91.6046, -15.5748,

25.6352

-5.0600

■ 48.9349, 24.9605,
26.8790

■ 95.4765, -21.4488,
-0.2938

■ 46.2184, 30.1534,
27.4058

■ 43.7983, 35.4903,
27.2131

■ 42.6820, 38.1712,
26.9687

Harmonies

Analogous

The Analogous color harmony consists of three colors that are next to each other on the color wheel.



70.1620, 3.6580, 8.0538



70.1604, 0.2850, 10.6788



70.1620, -4.1006, 11.5037

Triad

The Triadic color harmony groups three colors that are evenly spaced from another and form a triangle on the color wheel.



70.1620, 0.2829, 10.6799



70.1620, -12.1265, 3.4820



70.1620, 0.9100, -3.4409

Complementary

The Complementary color scheme is a pair of colors which are on the opposite of each other on the color wheel.



70.1604, 0.2850, 10.6788



70.1920, -7.0404, -3.5475

Split Complementary

Split-complementary colors differ from the complementary color scheme. The scheme consists of three colors, the original color and two neighbors of the complement color.



70.1620, -3.3936, -4.8469



70.1604, 0.2850, 10.6788



70.1620, -10.8579, -0.6971

Square

The Square scheme is like the rectangle color scheme, but the four colors are evenly spaced on the color wheel.



70.1620, 0.2829, 10.6799



70.1620, -11.1969, 7.5058



70.1620, -7.6888, -3.8131



70.1620, 4.0264, -0.0792

Rectangle

The Rectangle color scheme consists of four colors that form a rectangle on the color wheel.



70.1604, 0.2850, 10.6788



70.1620, -6.9856, 10.9645



70.1620, -7.6888, -3.8131



70.1620, -0.4494, -4.1671

Sweetspot

The Sweet Spot groups the original color and five complimentary colors.



70.1620, 0.2829, 10.6799



97.7335, -3.8638, 7.8462



67.2445, 9.3032, -0.8510



45.0203, -1.6566, 3.8366

0.0000, NaN, NaN



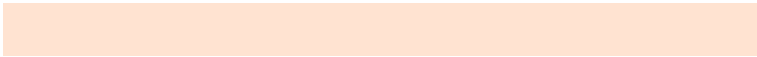
46.2646, -2.4686, 2.5136

Same Dimension

The Same Dimension uses a secret algorithm to generate beautiful new colors.



70.1620, 0.2829, 10.6799



90.0343, 1.7554, 15.7433



74.6636, -7.2217, 15.2854



33.6479, -0.6551, 3.8720



34.0923, 29.6235, 21.5261



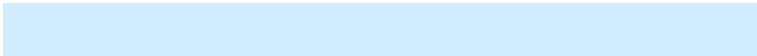
8.3155, 4.2954, 5.1992

Inverse Universe

The Inverse Universe completely reimagines the original color for something new.



70.1920, -7.0404, -3.5475



90.0814, -9.9164, -6.9350



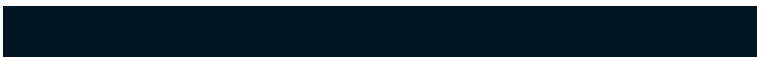
65.6870, 0.4678, -9.3933



33.6569, -2.8048, -0.3037



33.7166, -0.8370, -40.3360



8.2297, -1.6107, -6.8094

Previews

White Background



This preview shows how the HunterLab color 70.1604, 0.2850, 10.6788 looks on a white background.

Color Contrast Check

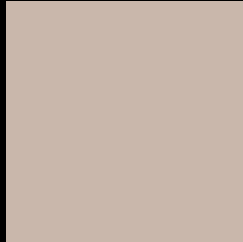
Large Text (above 18pt) WCAG AA × Fail

Any Text WCAG AA × Fail

Large Text (above 18pt) WCAG AAA × Fail

Any Text WCAG AAA × Fail

Black Background



This preview shows how the HunterLab color 70.1604, 0.2850, 10.6788 looks on a black background.

Color Contrast Check

Large Text (above 18pt) WCAG AA ✓ Pass

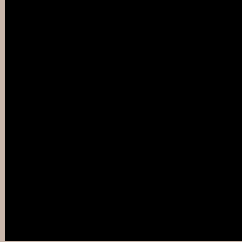
Any Text WCAG AA ✓ Pass

Large Text (above 18pt) WCAG AAA ✓ Pass

Any Text WCAG AAA ✓ Pass

If you want to check with other color combinations, try the [Color Contrast Checker](#).

HunterLab 70.1604, 0.2850, 10.6788 Background



This preview shows how black text looks on a background with the HunterLab color 70.1604, 0.2850, 10.6788.



This preview shows how white text looks on a background with the HunterLab color 70.1604, 0.2850,

Color Blindness Simulation

Color vision deficiency is a very complex topic, and I could not describe the different causes any better than Wikipedia does, so if you want to learn more, you should check out their [article about color blindness](#).

Dichromacy



Original Color

70.1604, 0.2850, 10.6788

Protanopia

70.3092, -3.7242, 10.3462

Deuteranopia

70.2301, 5.0589, 10.4142



Tritanopia

70.2673, 6.4877, 0.3464

Trichromacy



Original Color

70.1604, 0.2850, 10.6788

Protanomaly

70.2938, -2.2424, 10.3555

Deuteranomaly

70.2080, 3.5014, 10.3630

Tritanomaly

70.2064, 4.3030, 4.1050

Monochromacy



Original Color

70.1604, 0.2850, 10.6788

Achromatopsia

70.4935, -3.7614, 3.8300

Achromatomaly

70.4702, -2.6574, 6.5964

CSS Examples

Text

The CSS property to change the color of the text to HunterLab 70.1604, 0.2850, 10.6788 is called "color". The color property can be set on classes, ids or directly on the HTML element.

This example shows how text in the color `rgb(201, 183, 171)` looks like.

```
.text, #text, p{  
    color:rgb(201, 183, 171)  
}
```

If you want to add a text shadow in that color use the text-shadow property, you can generate a text shadow directly with our [CSS Text Shadow Generator](#).

Here you see how black text with a 4 pixel rgb(201, 183, 171) colored shadow looks like.

```
.shadow{ text-shadow: 4px 4px 2px rgb(201, 183, 171) }
```

Border

The CSS property to change the border of an element to HunterLab 70.1604, 0.2850, 10.6788 is called "border". The border property can be set on classes, ids or directly on the HTML element.

This example shows the color as border, it can be applied via the CSS property "border" or "border-color".

```
.border, #border, table{ border:4px solid rgb(201, 183, 171) }
```


If only the border color should be changed use the property `border-color`.

```
.border{ border-color:rgb(201, 183, 171) }
```

If you want to add a box shadow in that color use:

Here you see how a box with a 4 pixel `rgb(201, 183, 171)` colored shadow looks like.

```
.boxshadow{ -moz-box-shadow:4px 4px 4px  
4px rgb(201, 183, 171); -webkit-box-  
shadow:4px 4px 4px 4px rgb(201, 183, 171);  
box-shadow:4px 4px 4px 4px rgb(201, 183,  
171) }
```

Background

The CSS property to change the background color of an element to HunterLab 70.1604, 0.2850, 10.6788 is called "background". The background property can be set on classes, ids or directly on the HTML element.

```
.background, #background, body{  
background: rgb(201, 183, 171) }
```

If only the background color should be changed can be used:

```
.background{ background-color: rgb(201,  
183, 171) }
```

This example shows the color as background, it is applied via the CSS property "background".

To optimize and compress your CSS code, you can use our [online CSS compressor and optimizer](#) based on csstidy. If you want to create a linear or radial gradient as background or border, check our [CSS Gradient Generator](#).

Hey! You found this booklet interesting? Support Converting Colors with the new Membership Option!

The pro membership hides all ads, plus gives you double the colors in the color bucket, and more awesome pro features!

[Learn more, Memberships starting at \\$2.50/m!](#)

**Follow me
on Twitter!**

@ConvertingColor