

Converting Colors

HunterLab(70.1882, 3.9754,
6.4900)

Have a look what the booklet for
HunterLab(70.1882, 3.9754, 6.4900)
contains.

HunterLab(70.1579, 3.8419, 6.3541)	3
<i>Conversions</i>	4
<i>Details</i>	6
<i>Harmonies</i>	12
<i>Previews</i>	24
<i>Color Blindness Simulation</i>	28
<i>CSS Examples</i>	31

Color

**HunterLab(70.1579, 3.8419,
6.3541)**

Conversions

Conversions Part 1

Format	Color
Hex	CCB5B5
RGB	204, 181, 181
RGB Percent	80%, 71%, 71%
CMY	0.2000, 0.2902, 0.2902
CMYK	0.00, 0.11, 0.11, 0.20
HSL	0°, 18%, 75%
HSV	0°, 11%, 80%
XYZ	49.7662, 49.2213, 50.5937
YIQ	187.8770, 13.7080, 4.8760

Conversions

Conversions Part 2

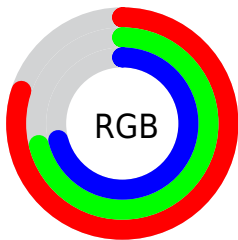
Format	Color
R_YB	204, 181, 181
Decimal	13415861
CIE Lab	75.59, 8.22, 3.00
CIE LCh	76, 8.748, 20.087
Yxy	49.2235, 0.3327, 0.3291
Android (android.graphics.Color)	4291605941 (0xFFCCB5B5)
YUV	187.8770, -3.3904, 14.1399
Hunter-Lab	70.1579, 3.8419, 6.3541

Details

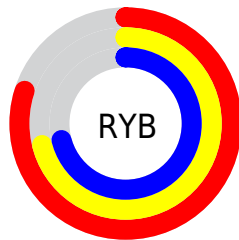
The HunterLab color **70.1579, 3.8419, 6.3541** is a light color, and the websafe version is hex **CCCCCC**. A complement of this color would be **75.7417, -11.0656, 1.7591**, and the grayscale version is **70.8738, -3.7816, 3.8507**.

A 20% lighter version of the original color is **93.7778, 1.1265, 7.1497**, and **48.4571, 4.3197, 4.9471** is the 20% darker color. If you saturate the color by 10%, you get **63.8354, 11.2573, 8.3859**, and if you desaturate by 10%, it is **76.8338, -3.2626, 4.4553**.

Distribution



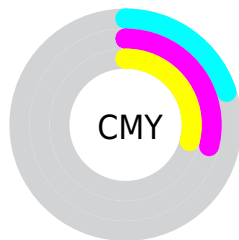
- Red (80%)
- Green (71%)
- Blue (71%)



- Red (80%)
- Yellow (71%)
- Blue (71%)



- Cyan (0%)
- Magenta (11%)
- Yellow (11%)
- Black (20%)





- Cyan (20%)
- Magenta (29%)
- Yellow (29%)

Brightness & Saturation Gradients


These gradients show how the HunterLab color 70.1579, 3.8419, 6.3541 changes by changing the brightness by 10 percent. The first figure shows a shift by +10% for each color and the second figure -10%.


Similar to the brightness gradients but the following saturation gradients show a change of the HunterLab color 70.1579, 3.8419, 6.3541 by changing the saturation by 10% instead.


 70.1579, 3.8419,
6.3541

 70.1579, 3.8419,
6.3541


195.8626, 0.1129,
14.2666

 58.9888, 4.0285,
5.5991


 94.3522, 3.3042,
7.9450

 48.4834, 4.1571,
4.8694


107.3150, 2.9655,
8.7776

 38.6883, 4.2182,
4.1664


120.8226, 2.5840,
9.6345

 29.6595, 4.2019,
3.4898

134.8536, 2.1621,
10.5153

 21.4684, 4.0941,
2.8386

149.3893, 1.7022,
11.4194

 14.2115, 3.8740,
2.2096

164.4127, 1.2063,

 7.8668, 4.1306,

12.3463

2.0113

179.9085, 0.6760,
13.2955

0.0000, NaN, NaN

0.0000, NaN, NaN

■ 70.1579, 3.8419,
6.3541

■ 70.1579, 3.8419,
6.3541

■ 63.8354, 11.2573,
8.3859

■ 76.8338, -3.2626,
4.4553

■ 57.9266, 18.9901,
10.5520

■ 83.8071, -10.0767,
2.6734

■ 52.5139, 26.9821,
12.8405

■ 91.0390, -16.6389,
0.9945

■ 47.6960, 35.0741,
15.2051

■ 95.6961, -20.6482,
-0.0096

■ 43.5855, 42.9459,

17.5464

■ 40.2971, 50.0799,
19.6994

■ 37.9204, 55.8184,
21.4499

■ 36.4797, 59.5813,
22.6054

■ 35.8305, 61.3556,
23.1527

Harmonies

Analogous

The Analogous color harmony consists of three colors that are next to each other on the color wheel.



70.1595, 4.2187, 2.5107



70.1579, 3.8419, 6.3541



70.1595, 1.4023, 9.3506

Triad

The Triadic color harmony groups three colors that are evenly spaced from another and form a triangle on the color wheel.



70.1595, 3.8399, 6.3553



70.1595, -9.7139, 8.4790



70.1595, -5.1043, -4.0078

Complementary

The Complementary color scheme is a pair of colors which are on the opposite of each other on the color wheel.



70.1579, 3.8419, 6.3541



75.7417, -11.0656, 1.7591

Split Complementary

Split-complementary colors differ from the complementary color scheme. The scheme consists of three colors, the original color and two neighbors of the complement color.



70.1595, -8.7525, -2.2033



70.1579, 3.8419, 6.3541



70.1595, -11.3730, 5.1025

Square

The Square scheme is like the rectangle color scheme, but the four colors are evenly spaced on the color wheel.



70.1595, 3.8399, 6.3553



70.1595, -6.4442, 10.5269



70.1595, -11.0251, 1.1843



70.1595, -1.0090, -3.6245

Rectangle

The Rectangle color scheme consists of four colors that form a rectangle on the color wheel.



70.1579, 3.8419, 6.3541



70.1595, -1.0319, 10.5339



70.1595, -11.0251, 1.1843



70.1595, -6.4220, -3.6332

Sweetspot

The Sweet Spot groups the original color and five complimentary colors.



70.1595, 3.8399, 6.3553



97.3312, -2.6138, 6.1534



70.8840, 7.7188, -3.9699



44.7027, -0.8699, 2.9370

0.0000, NaN, NaN



46.2646, -2.4686, 2.5136

Same Dimension

The Same Dimension uses a secret algorithm to generate beautiful new colors.



70.1595, 3.8399, 6.3553



87.8709, 7.6747, 8.9206



73.5482, -2.0150, 10.0431



33.4873, 1.1643, 2.8092



28.4264, 48.6758, 18.3683



6.4573, 11.0531, 4.1725

Inverse Universe

The Inverse Universe completely reimagines the original color for something new.



75.7417, -11.0656, 1.7591



96.8726, -16.3828, 1.5018



72.1826, -5.3569, -2.5390



35.6746, -4.6736, 1.0091



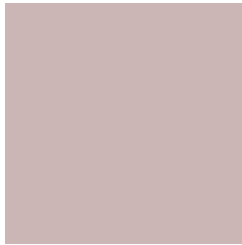
54.6955, -28.9911, -5.7811



12.4235, -6.5853, -1.3125

Previews

White Background



This preview shows how the HunterLab color 70.1579, 3.8419, 6.3541 looks on a white background.

Color Contrast Check

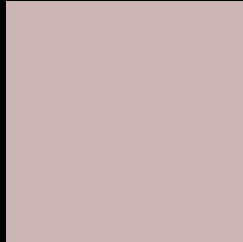
Large Text (above 18pt) WCAG AA × Fail

Any Text WCAG AA × Fail

Large Text (above 18pt) WCAG AAA × Fail

Any Text WCAG AAA × Fail

Black Background



This preview shows how the HunterLab color 70.1579, 3.8419, 6.3541 looks on a black background.

Color Contrast Check

Large Text (above 18pt) WCAG AA ✓ Pass

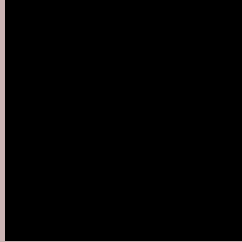
Any Text WCAG AA ✓ Pass

Large Text (above 18pt) WCAG AAA ✓ Pass

Any Text WCAG AAA ✓ Pass

If you want to check with other color combinations, try the [Color Contrast Checker](#).

HunterLab 70.1579, 3.8419, 6.3541 Background



This preview shows how black text looks on a background with the HunterLab color 70.1579, 3.8419, 6.3541.



This preview shows how white text looks on a background with the HunterLab color 70.1579, 3.8419,

Color Blindness Simulation

Color vision deficiency is a very complex topic, and I could not describe the different causes any better than Wikipedia does, so if you want to learn more, you should check out their [article about color blindness](#).

Dichromacy



Original Color

70.1579, 3.8419, 6.3541

Protanopia

70.0755, -2.3104, 4.7719

Deuteranopia

70.0718, 5.0377, 6.2765



Tritanopia

70.1515, 7.5114, 0.7178

Trichromacy



Original Color

70.1579, 3.8419, 6.3541

Protanomaly

70.2154, -0.3606, 5.4311

Deuteranomaly

69.9699, 4.6958, 6.1539

Tritanomaly

70.2110, 5.9852, 2.7129

Monochromacy



Original Color

70.1579, 3.8419, 6.3541

Achromatopsia

70.9145, -3.7838, 3.8529

Achromatomaly

70.4770, -0.8664, 4.7991

CSS Examples

Text

The CSS property to change the color of the text to HunterLab 70.1579, 3.8419, 6.3541 is called "color". The color property can be set on classes, ids or directly on the HTML element.

This example shows how text in the color `rgb(204, 181, 181)` looks like.

```
.text, #text, p{  
    color:rgb(204, 181, 181)  
}
```

If you want to add a text shadow in that color use the text-shadow property, you can generate a text shadow directly with our [CSS Text Shadow Generator](#).

Here you see how black text with a 4 pixel rgb(204, 181, 181) colored shadow looks like.

```
.shadow{ text-shadow: 4px 4px 2px rgb(204, 181, 181) }
```

Border

The CSS property to change the border of an element to HunterLab 70.1579, 3.8419, 6.3541 is called "border".

The border property can be set on classes, ids or directly on the HTML element.

This example shows the color as border, it can be applied via the CSS property "border" or "border-color".

```
.border, #border, table{ border:4px solid rgb(204, 181, 181) }
```


If only the border color should be changed use the property `border-color`.

```
.border{ border-color:rgb(204, 181, 181) }
```

If you want to add a box shadow in that color use:

Here you see how a box with a 4 pixel `rgb(204, 181, 181)` colored shadow looks like.

```
.boxshadow{ -moz-box-shadow:4px 4px 4px  
4px rgb(204, 181, 181); -webkit-box-  
shadow:4px 4px 4px 4px rgb(204, 181, 181);  
box-shadow:4px 4px 4px 4px rgb(204, 181,  
181) }
```

Background

The CSS property to change the background color of an element to HunterLab 70.1579, 3.8419, 6.3541 is called "background". The background property can be set on classes, ids or directly on the HTML element.

```
.background, #background, body{  
background: rgb(204, 181, 181) }
```

If only the background color should be changed can be used:

```
.background{ background-color: rgb(204,  
181, 181) }
```

This example shows the color as background, it is applied via the CSS property "background".

To optimize and compress your CSS code, you can use our [online CSS compressor and optimizer](#) based on csstidy. If you want to create a linear or radial gradient as background or border, check our [CSS Gradient Generator](#).

Hey! You found this booklet interesting? Support Converting Colors with the new Membership Option!

The pro membership hides all ads, plus gives you double the colors in the color bucket, and more awesome pro features!

[Learn more, Memberships starting at \\$2.50/m!](#)

**Follow me
on Twitter!**

@ConvertingColor