

Converting Colors

HunterLab(70.2388, 1.9274,
4.7316)

Have a look what the booklet for
HunterLab(70.2388, 1.9274, 4.7316)
contains.

HunterLab(70.3647, 1.7823, 4.7147)	3
<i>Conversions</i>	4
<i>Details</i>	6
<i>Harmonies</i>	12
<i>Previews</i>	24
<i>Color Blindness Simulation</i>	28
<i>CSS Examples</i>	31

Color

**HunterLab(70.3647, 1.7823,
4.7147)**

Conversions

Conversions Part 1

Format	Color
Hex	C7B7B9
RGB	199, 183, 185
RGB Percent	78%, 72%, 73%
CMY	0.2196, 0.2823, 0.2745
CMYK	0.00, 0.08, 0.07, 0.22
HSL	353°, 12%, 75%
HSV	353°, 8%, 78%
XYZ	49.2437, 49.5119, 52.8603
YIQ	188.0120, 8.8940, 4.0140

Conversions

Conversions Part 2

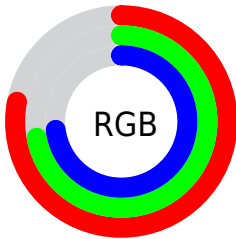
Format	Color
R_{YB}	199, 183, 185
Decimal	13088697
CIE Lab	75.77, 6.03, 1.04
CIE LCh	76, 6.113, 9.747
Yxy	49.5141, 0.3248, 0.3266
Android (android.graphics.Color)	4291278777 (0xFFC7B7B9)
YUV	188.0120, -1.4849, 9.6365
Hunter-Lab	70.3647, 1.7823, 4.7147

Details

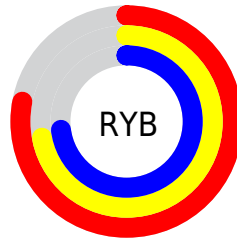
The HunterLab color $70.3647, 1.7823, 4.7147$ is a light color, and the websafe version is hex `CCCCCC`. A complement of this color would be $74.1260, -9.2408, 3.2611$, and the grayscale version is $70.9243, -3.7843, 3.8535$.

A 20% lighter version of the original color is $94.5219, 0.7396, 6.0567$, and $48.6322, 2.3393, 3.3941$ is the 20% darker color. If you saturate the color by 10%, you get $64.1760, 9.2358, 5.6683$, and if you desaturate by 10%, it is $76.8722, -5.4277, 3.9761$.

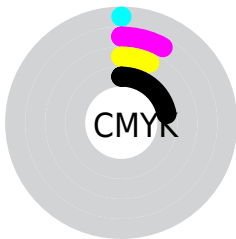
Distribution



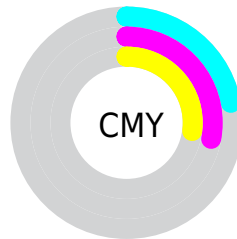
- Red (78%)
- Green (72%)
- Blue (73%)



- Red (78%)
- Yellow (72%)
- Blue (73%)



- Cyan (0%)
- Magenta (8%)
- Yellow (7%)
- Black (22%)



- Cyan (22%)
- Magenta (28%)
- Yellow (27%)

Brightness & Saturation Gradients

These gradients show how the HunterLab color 70.3647, 1.7823, 4.7147 changes by changing the brightness by 10 percent. The first figure shows a shift by +10% for each color and the second figure -10%.

Similar to the brightness gradients but the following saturation gradients show a change of the HunterLab color 70.3647, 1.7823, 4.7147 by changing the saturation by 10% instead.

■ 70.3647, 1.7823,
4.7147

■ 70.3647, 1.7823,
4.7147

196.1537, -2.7400,
11.9276

■ 59.1840, 2.0769,
4.0569

■ 94.5804, 1.0444,
6.1268

■ 48.6662, 2.3195,
3.4308

107.5533, 0.6118,
6.8762

■ 38.8579, 2.5022,
2.8394

121.0704, 0.1400,
7.6535

■ 29.8147, 2.6165,
2.2847

135.1107, -0.3689,
8.4578

■ 21.6078, 2.6508,
1.7690

149.6553, -0.9130,
9.2880

■ 14.3331, 2.5875,
1.2949

164.6873, -1.4905,

■ 7.9924, 2.8580,

10.1436

0.9718

180.1914, -2.0999,
11.0237

0.0000, NaN, NaN

0.0000, NaN, NaN

■ 70.3647, 1.7823,
4.7147

■ 70.3647, 1.7823,
4.7147

■ 64.1760, 9.2358,
5.6683

■ 76.8722, -5.4277,
3.9761

■ 58.3576, 16.9360,
6.8688

■ 83.6493, -12.4079,
3.4162

■ 52.9816, 24.8327,
8.3497

■ 90.6621, -19.1882,
3.0077

■ 48.1341, 32.7942,
10.1304

■ 95.3210, -22.0395,
-0.3213

■ 43.9164, 40.5554,

■ 95.3322, -21.9759,

12.1978

-0.4809

■ 40.4366, 47.6774,
14.4803

■ 37.7909, 53.5691,
16.8266

■ 36.0307, 57.6418,
19.0137

■ 35.0886, 59.7119,
20.7835

Harmonies

Analogous

The Analogous color harmony consists of three colors that are next to each other on the color wheel.



70.3662, 1.5102, 1.9831



70.3647, 1.7823, 4.7147



70.3662, 0.5482, 7.1145

Triad

The Triadic color harmony groups three colors that are evenly spaced from another and form a triangle on the color wheel.



70.3662, 1.7804, 4.7159



70.3662, -7.2627, 7.7596



70.3662, -5.6641, -1.2909

Complementary

The Complementary color scheme is a pair of colors which are on the opposite of each other on the color wheel.



70.3647, 1.7823, 4.7147



74.1260, -9.2408, 3.2611

Split Complementary

Split-complementary colors differ from the complementary color scheme. The scheme consists of three colors, the original color and two neighbors of the complement color.



70.3662, -7.9638, 0.3796



70.3647, 1.7823, 4.7147



70.3662, -8.8763, 5.6286

Square

The Square scheme is like the rectangle color scheme, but the four colors are evenly spaced on the color wheel.



70.3662, 1.7804, 4.7159



70.3662, -4.6930, 8.8245



70.3662, -9.1309, 2.9329



70.3662, -2.8188, -1.5593

Rectangle

The Rectangle color scheme consists of four colors that form a rectangle on the color wheel.



70.3647, 1.7823, 4.7147



70.3662, -0.9479, 8.2284



70.3662, -9.1309, 2.9329



70.3662, -6.5254, -0.8716

Sweetspot

The Sweet Spot groups the original color and five complimentary colors.



70.3662, 1.7804, 4.7159



98.2369, -3.4134, 5.6210



70.6011, 3.4566, -1.8122



45.4891, -1.6234, 2.5961

0.0000, NaN, NaN



46.2646, -2.4686, 2.5136

Same Dimension

The Same Dimension uses a secret algorithm to generate beautiful new colors.



70.3662, 1.7804, 4.7159



91.3459, 4.4081, 6.4809



72.0422, -1.5167, 7.4935



32.6468, 1.2996, 2.2687



28.0348, 48.1953, 16.6823



6.1600, 10.7077, 2.7517

Inverse Universe

The Inverse Universe completely reimagines the original color for something new.



70.3662, 1.7804, 4.7159



91.3459, 4.4081, 6.4809



72.3819, -5.9818, 0.2364



32.6468, 1.2996, 2.2687



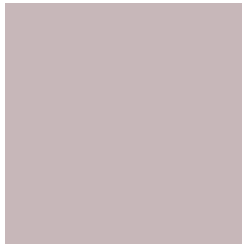
28.0348, 48.1953, 16.6823



6.1600, 10.7077, 2.7517

Previews

White Background



This preview shows how the HunterLab color 70.3647, 1.7823, 4.7147 looks on a white background.

Color Contrast Check

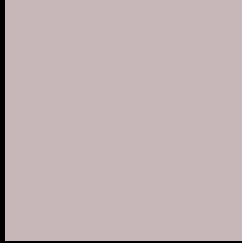
Large Text (above 18pt) WCAG AA × Fail

Any Text WCAG AA × Fail

Large Text (above 18pt) WCAG AAA × Fail

Any Text WCAG AAA × Fail

Black Background



This preview shows how the HunterLab color 70.3647, 1.7823, 4.7147 looks on a black background.

Color Contrast Check

Large Text (above 18pt) WCAG AA ✓ Pass

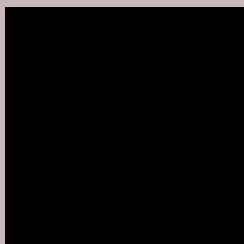
Any Text WCAG AA ✓ Pass

Large Text (above 18pt) WCAG AAA ✓ Pass

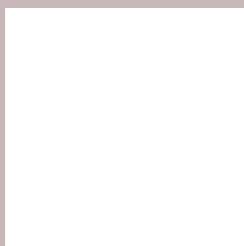
Any Text WCAG AAA ✓ Pass

If you want to check with other color combinations, try the [Color Contrast Checker](#).

HunterLab 70.3647, 1.7823, 4.7147 Background



This preview shows how black text looks on a background with the HunterLab color 70.3647, 1.7823, 4.7147.



This preview shows how white text looks on a background with the HunterLab color 70.3647, 1.7823,

4.7147.

Color Blindness Simulation

Color vision deficiency is a very complex topic, and I could not describe the different causes any better than Wikipedia does, so if you want to learn more, you should check out their [article about color blindness](#).

Dichromacy



Original Color

70.3647, 1.7823, 4.7147

Protanopia

70.4648, -2.3191, 3.8215

Deuteranopia

70.3773, 4.8169, 4.7825



Tritanopia

70.2230, 4.9856, -0.7354

Trichromacy



Original Color

70.3647, 1.7823, 4.7147

Protanomaly

70.4135, -1.0246, 4.2547

Deuteranomaly

70.4664, 3.6273, 4.8655

Tritanomaly

70.3854, 3.7842, 1.4295

Monochromacy



Original Color

70.3647, 1.7823, 4.7147

Achromatopsia

70.9145, -3.7838, 3.8529

Achromatomaly

70.6485, -1.6845, 4.0487

CSS Examples

Text

The CSS property to change the color of the text to HunterLab 70.3647, 1.7823, 4.7147 is called "color". The color property can be set on classes, ids or directly on the HTML element.

This example shows how text in the color `rgb(199, 183, 185)` looks like.

```
.text, #text, p{  
    color:rgb(199, 183, 185)  
}
```

If you want to add a text shadow in that color use the text-shadow property, you can generate a text shadow directly with our [CSS Text Shadow Generator](#).

Here you see how black text with a 4 pixel rgb(199, 183, 185) colored shadow looks like.

```
.shadow{ text-shadow: 4px 4px 2px rgb(199, 183, 185) }
```

Border

The CSS property to change the border of an element to HunterLab 70.3647, 1.7823, 4.7147 is called "border".

The border property can be set on classes, ids or directly on the HTML element.

This example shows the color as border, it can be applied via the CSS property "border" or "border-color".

```
.border, #border, table{ border:4px solid rgb(199, 183, 185) }
```


If only the border color should be changed use the property `border-color`.

```
.border{ border-color:rgb(199, 183, 185) }
```

If you want to add a box shadow in that color use:

Here you see how a box with a 4 pixel `rgb(199, 183, 185)` colored shadow looks like.

```
.boxshadow{ -moz-box-shadow:4px 4px 4px  
4px rgb(199, 183, 185); -webkit-box-  
shadow:4px 4px 4px 4px rgb(199, 183, 185);  
box-shadow:4px 4px 4px 4px rgb(199, 183,  
185) }
```

Background

The CSS property to change the background color of an element to HunterLab 70.3647, 1.7823, 4.7147 is called "background". The background property can be set on classes, ids or directly on the HTML element.

```
.background, #background, body{  
background: rgb(199, 183, 185) }
```

If only the background color should be changed can be used:

```
.background{ background-color: rgb(199,  
183, 185) }
```

This example shows the color as background, it is applied via the CSS property "background".

To optimize and compress your CSS code, you can use our [online CSS compressor and optimizer](#) based on csstidy. If you want to create a linear or radial gradient as background or border, check our [CSS Gradient Generator](#).

Hey! You found this booklet interesting? Support Converting Colors with the new Membership Option!

The pro membership hides all ads, plus gives you double the colors in the color bucket, and more awesome pro features!

[Learn more, Memberships starting at \\$2.50/m!](#)

**Follow me
on Twitter!**

@ConvertingColor