

Converting Colors

HunterLab(70.3565, 8.1907,
0.9803)

Have a look what the booklet for
HunterLab(70.3565, 8.1907, 0.9803)
contains.

HunterLab(70.3565, 8.1907, 0.9803)	3
<i>Conversions</i>	4
<i>Details</i>	6
<i>Harmonies</i>	12
<i>Previews</i>	24
<i>Color Blindness Simulation</i>	28
<i>CSS Examples</i>	31

Color

**HunterLab(70.3565, 8.1907,
0.9803)**

Conversions

Conversions Part 1

Format	Color
Hex	D0B3C1
RGB	208, 179, 193
RGB Percent	82%, 70%, 76%
CMY	0.1843, 0.2980, 0.2431
CMYK	0.00, 0.14, 0.07, 0.18
HSL	331°, 24%, 76%
HSV	331°, 14%, 82%
XYZ	51.7582, 49.5004, 57.2787
YIQ	189.2670, 12.7900, 10.5020

Conversions

Conversions Part 2

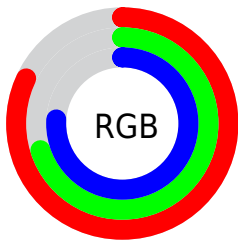
Format	Color
R _Y B	208, 179, 193
Decimal	13677505
CIE Lab	75.76, 12.78, -3.24
CIE LCh	76, 13.182, 345.771
Yxy	49.5026, 0.3265, 0.3122
Android (android.graphics.Color)	4291867585 (0xFFD0B3C1)
YUV	189.2670, 1.8404, 16.4288
Hunter-Lab	70.3565, 8.1907, 0.9803

Details

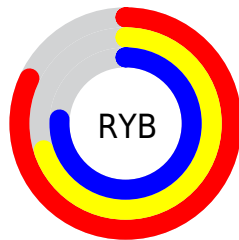
The HunterLab color $70.3565, 8.1907, 0.9803$ is a light color, and the websafe version is hex `CCCCCC`. A complement of this color would be $76.5453, -15.2909, 7.3636$, and the grayscale version is $71.4386, -3.8118, 3.8814$.

A 20% lighter version of the original color is $93.5501, 4.2874, 0.9194$, and $48.5669, 8.1092, -0.2203$ is the 20% darker color. If you saturate the color by 10%, you get $64.2815, 17.3057, -1.0273$, and if you desaturate by 10%, it is $76.7962, -0.7620, 3.3196$.

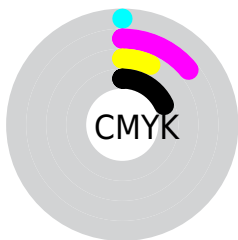
Distribution



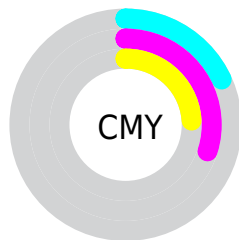
- Red (82%)
- Green (70%)
- Blue (76%)



- Red (82%)
- Yellow (70%)
- Blue (76%)



- Cyan (0%)
- Magenta (14%)
- Yellow (7%)
- Black (18%)



- Cyan (18%)
- Magenta (30%)
- Yellow (24%)

Brightness & Saturation Gradients

These gradients show how the HunterLab color 70.3565, 8.1907, 0.9803 changes by changing the brightness by 10 percent. The first figure shows a shift by +10% for each color and the second figure -10%.

Similar to the brightness gradients but the following saturation gradients show a change of the HunterLab color 70.3565, 8.1907, 0.9803 by changing the saturation by 10% instead.

■ 70.3565, 8.1907,
0.9803

■ 70.3565, 8.1907,
0.9803

196.1421, 6.0729,
6.7082

■ 59.1763, 8.1603,
0.5259

■ 94.5713, 8.0580,
2.0159

■ 48.6590, 8.0602,
0.1156

107.5438, 7.9095,
2.5894

■ 38.8512, 7.8789,
-0.2451

121.0606, 7.7111,
3.1977

■ 29.8086, 7.6039,
-0.5504

135.1005, 7.4662,
3.8391

■ 21.6023, 7.2179,
-0.7928

149.6448, 7.1776,
4.5121

■ 14.3283, 6.6961,
-0.9610

164.6764, 6.8478,

■ 7.9874, 6.5965,

5.2153

-1.2468

180.1802, 6.4789,
5.9477

0.0000, NaN, NaN

0.0000, NaN, NaN

■ 70.3565, 8.1907,
0.9803

■ 70.3565, 8.1907,
0.9803

■ 64.2815, 17.3057,
-1.0273

■ 76.7962, -0.7620,
3.3196

■ 58.6305, 26.5217,
-2.6131

■ 83.5442, -9.5261,
5.9159

■ 53.4828, 35.6891,
-3.6562

■ 90.5607, -18.1086,
8.7174

■ 48.9295, 44.5368,
-4.0145

■ 95.3879, -22.9899,
9.0301

■ 45.0697, 52.6337,

■ 95.7252, -21.0823,

-3.5416

4.2136

■ 41.9972, 59.3980,
-2.1285

■ 95.9948, -19.5626,
0.3758

■ 39.7754, 64.2119,
0.2324

■ 38.4028, 66.6665,
3.3885

■ 37.8655, 67.2962,
5.4723

Harmonies

Analogous

The Analogous color harmony consists of three colors that are next to each other on the color wheel.



70.3580, 5.0000, -4.5587



70.3565, 8.1907, 0.9803



70.3580, 8.1001, 6.8462

Triad

The Triadic color harmony groups three colors that are evenly spaced from another and form a triangle on the color wheel.



70.3580, 8.1887, 0.9816



70.3580, -6.9724, 13.9031



70.3580, -11.8909, -4.8010

Complementary

The Complementary color scheme is a pair of colors which are on the opposite of each other on the color wheel.



70.3565, 8.1907, 0.9803



76.5453, -15.2909, 7.3636

Split Complementary

Split-complementary colors differ from the complementary color scheme. The scheme consists of three colors, the original color and two neighbors of the complement color.



70.3580, -14.8792, 0.6736



70.3565, 8.1907, 0.9803



70.3580, -12.1074, 11.2978

Square

The Square scheme is like the rectangle color scheme, but the four colors are evenly spaced on the color wheel.



70.3580, 8.1887, 0.9816



70.3580, -0.8002, 13.9700



70.3580, -14.9570, 6.5637



70.3580, -6.6676, -8.0881

Rectangle

The Rectangle color scheme consists of four colors that form a rectangle on the color wheel.



70.3565, 8.1907, 0.9803



70.3580, 6.1899, 10.1484



70.3580, -14.9570, 6.5637



70.3580, -13.1820, -3.1353

Sweetspot

The Sweet Spot groups the original color and five complimentary colors.



70.3580, 8.1887, 0.9816



96.6068, -0.8403, 4.1465



69.4722, 6.2526, -8.0110



44.4027, 0.0044, 1.8091

0.0000, NaN, NaN



46.2646, -2.4686, 2.5136

Same Dimension

The Same Dimension uses a secret algorithm to generate beautiful new colors.



70.3580, 8.1887, 0.9816



86.0413, 14.0323, 0.3607



70.0722, 5.6796, 7.1899



34.4992, 1.9375, 0.9442



29.9257, 53.2457, 3.8561



7.1885, 12.9980, -0.6846

Inverse Universe

The Inverse Universe completely reimagines the original color for something new.



70.3580, 8.1887, 0.9816



86.0413, 14.0323, 0.3607



76.8214, -12.6469, 1.0589



34.4992, 1.9375, 0.9442



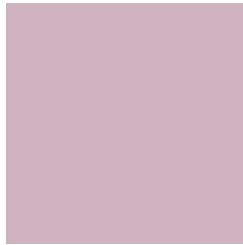
29.9257, 53.2457, 3.8561



7.1885, 12.9980, -0.6846

Previews

White Background



This preview shows how the HunterLab color 70.3565, 8.1907, 0.9803 looks on a white background.

Color Contrast Check

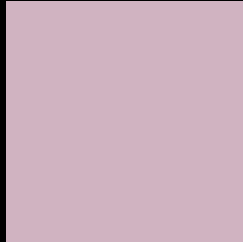
Large Text (above 18pt) WCAG AA × Fail

Any Text WCAG AA × Fail

Large Text (above 18pt) WCAG AAA × Fail

Any Text WCAG AAA × Fail

Black Background



This preview shows how the HunterLab color 70.3565, 8.1907, 0.9803 looks on a black background.

Color Contrast Check

Large Text (above 18pt) WCAG AA ✓ Pass

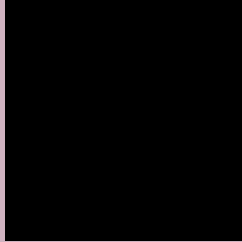
Any Text WCAG AA ✓ Pass

Large Text (above 18pt) WCAG AAA ✓ Pass

Any Text WCAG AAA ✓ Pass

If you want to check with other color combinations, try the [Color Contrast Checker](#).

HunterLab 70.3565, 8.1907, 0.9803 Background



This preview shows how black text looks on a background with the HunterLab color 70.3565, 8.1907, 0.9803.



This preview shows how white text looks on a background with the HunterLab color 70.3565, 8.1907,

0.9803.

Color Blindness Simulation

Color vision deficiency is a very complex topic, and I could not describe the different causes any better than Wikipedia does, so if you want to learn more, you should check out their [article about color blindness](#).

Dichromacy



Original Color

70.3565, 8.1907, 0.9803

Protanopia

70.5080, -1.5407, -0.9992

Deuteranopia

70.3239, 5.1318, 0.8871



Tritanopia

70.3565, 8.1907, 0.9803

Trichromacy



Original Color

70.3565, 8.1907, 0.9803

Protanomaly

70.3240, 2.3303, -0.6563

Deuteranomaly

70.2354, 6.3177, 0.7997

Tritanomaly

70.3565, 8.1907, 0.9803

Monochromacy



Original Color

70.3565, 8.1907, 0.9803

Achromatopsia

71.3359, -3.8063, 3.8758

Achromatomaly

70.8176, 0.6053, 2.8627

CSS Examples

Text

The CSS property to change the color of the text to HunterLab 70.3565, 8.1907, 0.9803 is called "color". The color property can be set on classes, ids or directly on the HTML element.

This example shows how text in the color `rgb(208, 179, 193)` looks like.

```
.text, #text, p{  
    color:rgb(208, 179, 193)  
}
```

If you want to add a text shadow in that color use the text-shadow property, you can generate a text shadow directly with our [CSS Text Shadow Generator](#).

Here you see how black text with a 4 pixel rgb(208, 179, 193) colored shadow looks like.

```
.shadow{ text-shadow: 4px 4px 2px rgb(208, 179, 193) }
```

Border

The CSS property to change the border of an element to HunterLab 70.3565, 8.1907, 0.9803 is called "border". The border property can be set on classes, ids or directly on the HTML element.

This example shows the color as border, it can be applied via the CSS property "border" or "border-color".

```
.border, #border, table{ border:4px solid rgb(208, 179, 193) }
```


If only the border color should be changed use the property `border-color`.

```
.border{ border-color:rgb(208, 179, 193) }
```

If you want to add a box shadow in that color use:

Here you see how a box with a 4 pixel `rgb(208, 179, 193)` colored shadow looks like.

```
.boxshadow{ -moz-box-shadow:4px 4px 4px  
4px rgb(208, 179, 193); -webkit-box-  
shadow:4px 4px 4px 4px rgb(208, 179, 193);  
box-shadow:4px 4px 4px 4px rgb(208, 179,  
193) }
```

Background

The CSS property to change the background color of an element to HunterLab 70.3565, 8.1907, 0.9803 is called "background". The background property can be set on classes, ids or directly on the HTML element.

```
.background, #background, body{  
background: rgb(208, 179, 193) }
```

If only the background color should be changed can be used:

```
.background{ background-color: rgb(208,  
179, 193) }
```

This example shows the color as background, it is applied via the CSS property "background".

To optimize and compress your CSS code, you can use our [online CSS compressor and optimizer](#) based on csstidy. If you want to create a linear or radial gradient as background or border, check our [CSS Gradient Generator](#).

Hey! You found this booklet interesting? Support Converting Colors with the new Membership Option!

The pro membership hides all ads, plus gives you double the colors in the color bucket, and more awesome pro features!

[Learn more, Memberships starting at \\$2.50/m!](#)

**Follow me
on Twitter!**

@ConvertingColor