

Converting Colors

HunterLab(70.3892, -0.0083,
7.4439)

Have a look what the booklet for
HunterLab(70.3892, -0.0083, 7.4439)
contains.

HunterLab(70.3857, -0.0105, 7.4464)	3
<i>Conversions</i>	4
<i>Details</i>	6
<i>Harmonies</i>	12
<i>Previews</i>	24
<i>Color Blindness Simulation</i>	28
<i>CSS Examples</i>	31

Color

**HunterLab(70.3857, -0.0105,
7.4464)**

Conversions

Conversions Part 1

Format	Color
Hex	C6B8B3
RGB	198, 184, 179
RGB Percent	78%, 72%, 70%
CMY	0.2235, 0.2784, 0.2980
CMYK	0.00, 0.07, 0.10, 0.22
HSL	16°, 14%, 74%
HSV	16°, 10%, 78%
XYZ	48.5659, 49.5415, 49.6506
YIQ	187.6160, 9.9490, 1.4130

Conversions

Conversions Part 2

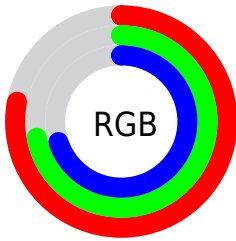
Format	Color
R _Y B	198, 186, 179
Decimal	13023411
CIE Lab	75.79, 4.10, 4.31
CIE LCh	76, 5.949, 46.492
Yxy	49.5436, 0.3287, 0.3353
Android (android.graphics.Color)	4291213491 (0xFFC6B8B3)
YUV	187.6160, -4.2477, 9.1068
Hunter-Lab	70.3857, -0.0105, 7.4464

Details

The HunterLab color $70.3857, -0.0105, 7.4464$ is a light color, and the websafe version is hex `CCCCCC`. A complement of this color would be $71.9722, -7.2692, 0.2092$, and the grayscale version is $70.7685, -3.7760, 3.8450$.

A 20% lighter version of the original color is $94.6458, -0.8042, 9.0697$, and $48.6500, 0.6591, 5.9339$ is the 20% darker color. If you saturate the color by 10%, you get $65.6112, 4.4247, 10.7832$, and if you desaturate by 10%, it is $75.3518, -4.1729, 3.9381$.

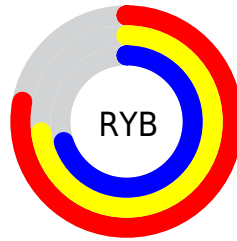
Distribution



Red (78%)

Green (72%)

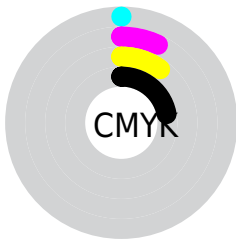
Blue (70%)



Red (78%)

Yellow (73%)

Blue (70%)

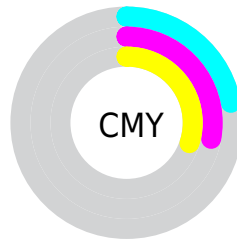


Cyan (0%)

Magenta (7%)

Yellow (10%)

Black (22%)



Cyan (22%)

Magenta (28%)

Yellow (30%)

Brightness & Saturation Gradients

These gradients show how the HunterLab color 70.3857, -0.0105, 7.4464 changes by changing the brightness by 10 percent. The first figure shows a shift by +10% for each color and the second figure -10%.

Similar to the brightness gradients but the following saturation gradients show a change of the HunterLab color 70.3857, -0.0105, 7.4464 by changing the saturation by 10% instead.

■ 70.3857, -0.0105,
7.4464

■ 70.3857, -0.0105,
7.4464

196.1832, -5.2320,
15.8374

■ 59.2038, 0.3794,
6.6246

■ 94.6036, -0.9254,
9.1599

■ 48.6848, 0.7230,
5.8236

107.5775, -1.4406,
10.0494

■ 38.8752, 1.0134,
5.0435

121.0956, -1.9920,
10.9609

■ 29.8305, 1.2438,
4.2827

135.1368, -2.5776,
11.8940

■ 21.6220, 1.4047,
3.5375

149.6823, -3.1958,
12.8486

■ 14.3454, 1.4821,
2.8004

164.7152, -3.8451,

■ 8.0050, 1.8018,

13.8242

2.6699

180.2202, -4.5242,
14.8206

0.0000, NaN, NaN

0.0000, NaN, NaN

■ 70.3857, -0.0105,
7.4464

■ 70.3857, -0.0105,
7.4464

■ 65.6112, 4.4247,
10.7832

■ 75.3518, -4.1729,
3.9381

■ 61.0483, 9.1634,
13.9060

■ 80.4840, -8.0844,
0.2848

■ 56.7282, 14.2205,
16.7653

■ 85.7663, -11.7748,
-3.4897

■ 52.6854, 19.5965,
19.2964

■ 91.0700, -15.9086,
-5.7548

■ 48.9598, 25.2626,

■ 95.2606, -22.2376,

21.4201

-0.5738

■ 45.5958, 31.1445,
23.0460

■ 42.6404, 37.1037,
24.0831

■ 40.1384, 42.9227,
24.4650

■ 38.1177, 48.2786,
24.2974

Harmonies

Analogous

The Analogous color harmony consists of three colors that are next to each other on the color wheel.



70.3872, 1.4805, 5.2706



70.3857, -0.0105, 7.4464



70.3872, -2.4968, 8.6340

Triad

The Triadic color harmony groups three colors that are evenly spaced from another and form a triangle on the color wheel.



70.3872, -0.0124, 7.4475



70.3872, -8.9210, 5.0178



70.3872, -2.2237, -1.2613

Complementary

The Complementary color scheme is a pair of colors which are on the opposite of each other on the color wheel.



70.3857, -0.0105, 7.4464



71.9722, -7.2692, 0.2092

Split Complementary

Split-complementary colors differ from the complementary color scheme. The scheme consists of three colors, the original color and two neighbors of the complement color.



70.3872, -5.0132, -1.3355



70.3857, -0.0105, 7.4464



70.3872, -8.8505, 2.3611

Square

The Square scheme is like the rectangle color scheme, but the four colors are evenly spaced on the color wheel.



70.3872, -0.0124, 7.4475



70.3872, -7.6239, 7.2687



70.3872, -7.4297, 0.0126



70.3872, 0.1902, 0.2115

Rectangle

The Rectangle color scheme consists of four colors that form a rectangle on the color wheel.



70.3857, -0.0105, 7.4464



70.3872, -4.3675, 8.7350



70.3872, -7.4297, 0.0126



70.3872, -3.1493, -1.4526

Sweetspot

The Sweet Spot groups the original color and five complimentary colors.



70.3872, -0.0124, 7.4475



97.9663, -3.6826, 6.8747



69.3600, 4.8851, -0.4280



45.0739, -1.4968, 3.3573

0.0000, NaN, NaN



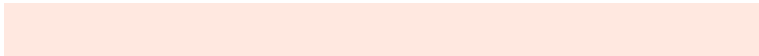
46.2646, -2.4686, 2.5136

Same Dimension

The Same Dimension uses a secret algorithm to generate beautiful new colors.



70.3872, -0.0124, 7.4475



91.9974, 1.4727, 11.0816



73.1517, -4.6634, 10.4271



33.2921, -0.0486, 3.4832



30.8769, 38.5098, 19.7004



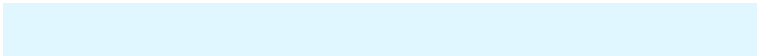
7.5749, 6.0477, 4.7735

Inverse Universe

The Inverse Universe completely reimagines the original color for something new.



71.9722, -7.2692, 0.2092



94.6663, -10.7522, -1.1087



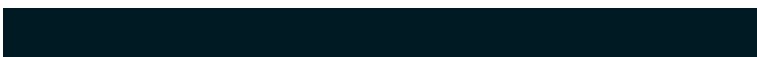
69.1656, -2.6533, -3.2252



34.0244, -3.4013, 0.1390



40.1719, -10.8838, -26.7163



9.3682, -3.2488, -4.6962

Previews

White Background



This preview shows how the HunterLab color 70.3857, -0.0105, 7.4464 looks on a white background.

Color Contrast Check

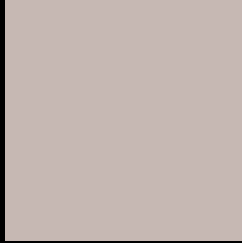
Large Text (above 18pt) WCAG AA × Fail

Any Text WCAG AA × Fail

Large Text (above 18pt) WCAG AAA × Fail

Any Text WCAG AAA × Fail

Black Background



This preview shows how the HunterLab color 70.3857, -0.0105, 7.4464 looks on a black background.

Color Contrast Check

Large Text (above 18pt) WCAG AA ✓ Pass

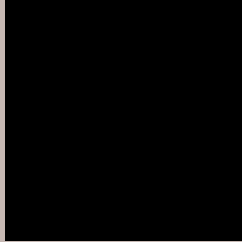
Any Text WCAG AA ✓ Pass

Large Text (above 18pt) WCAG AAA ✓ Pass

Any Text WCAG AAA ✓ Pass

If you want to check with other color combinations, try the [Color Contrast Checker](#).

HunterLab 70.3857, -0.0105, 7.4464 Background



This preview shows how black text looks on a background with the HunterLab color 70.3857, -0.0105, 7.4464.



This preview shows how white text looks on a background with the HunterLab color 70.3857, -0.0105,

7.4464.

Color Blindness Simulation

Color vision deficiency is a very complex topic, and I could not describe the different causes any better than Wikipedia does, so if you want to learn more, you should check out their [article about color blindness](#).

Dichromacy



Original Color

70.3857, -0.0105, 7.4464

Protanopia

70.4412, -2.8160, 7.0118

Deuteranopia

70.4333, 4.7100, 7.1346



Tritanopia

70.2230, 4.9856, -0.7354

Trichromacy



Original Color

70.3857, -0.0105, 7.4464

Protanomaly

70.3296, -1.6685, 6.9055

Deuteranomaly

70.4191, 3.1730, 7.0917

Tritanomaly

70.2251, 3.1180, 2.1975

Monochromacy



Original Color

70.3857, -0.0105, 7.4464

Achromatopsia

70.9145, -3.7838, 3.8529

Achromatomaly

70.8872, -2.5158, 5.2464

CSS Examples

Text

The CSS property to change the color of the text to HunterLab 70.3857, -0.0105, 7.4464 is called "color". The color property can be set on classes, ids or directly on the HTML element.

This example shows how text in the color `rgb(198, 184, 179)` looks like.

```
.text, #text, p{  
    color:rgb(198, 184, 179)  
}
```

If you want to add a text shadow in that color use the text-shadow property, you can generate a text shadow directly with our [CSS Text Shadow Generator](#).

Here you see how black text with a 4 pixel rgb(198, 184, 179) colored shadow looks like.

```
.shadow{ text-shadow: 4px 4px 2px rgb(198, 184, 179) }
```

Border

The CSS property to change the border of an element to HunterLab 70.3857, -0.0105, 7.4464 is called "border". The border property can be set on classes, ids or directly on the HTML element.

This example shows the color as border, it can be applied via the CSS property "border" or "border-color".

```
.border, #border, table{ border:4px solid rgb(198, 184, 179) }
```


If only the border color should be changed use the property `border-color`.

```
.border{ border-color:rgb(198, 184, 179) }
```

If you want to add a box shadow in that color use:

Here you see how a box with a 4 pixel `rgb(198, 184, 179)` colored shadow looks like.

```
.boxshadow{ -moz-box-shadow:4px 4px 4px  
4px rgb(198, 184, 179); -webkit-box-  
shadow:4px 4px 4px 4px rgb(198, 184, 179);  
box-shadow:4px 4px 4px 4px rgb(198, 184,  
179) }
```

Background

The CSS property to change the background color of an element to HunterLab 70.3857, -0.0105, 7.4464 is called "background". The background property can be set on classes, ids or directly on the HTML element.

```
.background, #background, body{  
background: rgb(198, 184, 179) }
```

If only the background color should be changed can be used:

```
.background{ background-color: rgb(198,  
184, 179) }
```

This example shows the color as background, it is applied via the CSS property "background".

To optimize and compress your CSS code, you can use our [online CSS compressor and optimizer](#) based on csstidy. If you want to create a linear or radial gradient as background or border, check our [CSS Gradient Generator](#).

Hey! You found this booklet interesting? Support Converting Colors with the new Membership Option!

The pro membership hides all ads, plus gives you double the colors in the color bucket, and more awesome pro features!

[Learn more, Memberships starting at \\$2.50/m!](#)

**Follow me
on Twitter!**

@ConvertingColor