

Converting Colors

HunterLab(70.4553, 6.2621,
7.1867)

Have a look what the booklet for
HunterLab(70.4553, 6.2621, 7.1867)
contains.

HunterLab(70.4553, 6.2621, 7.1867)	3
<i>Conversions</i>	4
<i>Details</i>	6
<i>Harmonies</i>	12
<i>Previews</i>	24
<i>Color Blindness Simulation</i>	28
<i>CSS Examples</i>	31

Color

**HunterLab(70.4553, 6.2621,
7.1867)**

Conversions

Conversions Part 1

Format	Color
Hex	D2B4B4
RGB	210, 180, 180
RGB Percent	82%, 71%, 71%
CMY	0.1765, 0.2941, 0.2941
CMYK	0.00, 0.14, 0.14, 0.18
HSL	0°, 25%, 76%
HSV	0°, 14%, 82%
XYZ	51.1379, 49.6395, 50.0662
YIQ	188.9700, 17.8800, 6.3600

Conversions

Conversions Part 2

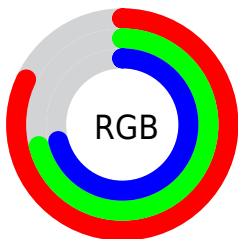
Format	Color
R _Y B	210, 180, 180
Decimal	13808820
CIE Lab	75.85, 10.77, 3.99
CIE LCh	76, 11.485, 20.332
Yxy	49.6417, 0.3390, 0.3291
Android (android.graphics.Color)	4291998900 (0xFFD2B4B4)
YUV	188.9700, -4.4222, 18.4433
Hunter-Lab	70.4553, 6.2621, 7.1867

Details

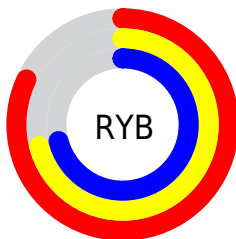
The HunterLab color $70.4553, 6.2621, 7.1867$ is a light color, and the websafe version is hex $CC9999$. A complement of this color would be $77.7485, -13.2278, 1.1793$, and the grayscale version is $71.3374, -3.8064, 3.8759$.

A 20% lighter version of the original color is $93.4382, 1.4913, 7.2474$, and $48.6617, 6.3181, 5.6316$ is the 20% darker color. If you saturate the color by 10%, you get $64.0343, 14.0388, 9.3322$, and if you desaturate by 10%, it is $77.2615, -1.1882, 5.1818$.

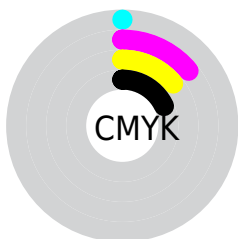
Distribution



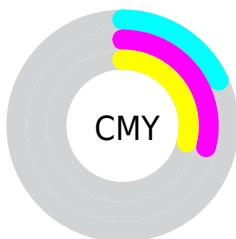
- Red (82%)
- Green (71%)
- Blue (71%)



- Red (82%)
- Yellow (71%)
- Blue (71%)



- Cyan (0%)
- Magenta (14%)
- Yellow (14%)
- Black (18%)





- Cyan (18%)
- Magenta (29%)
- Yellow (29%)

Brightness & Saturation Gradients


These gradients show how the HunterLab color 70.4553, 6.2621, 7.1867 changes by changing the brightness by 10 percent. The first figure shows a shift by +10% for each color and the second figure -10%.


Similar to the brightness gradients but the following saturation gradients show a change of the HunterLab color 70.4553, 6.2621, 7.1867 by changing the saturation by 10% instead.

 70.4553, 6.2621,
7.1867

 70.4553, 6.2621,
7.1867


196.2812, 3.4324,
15.4612

 59.2696, 6.3273,
6.3813


 94.6804, 5.9505,
8.8703

 48.7464, 6.3280,
5.5978


107.6577, 5.7180,
9.7459

 38.9323, 6.2535,
4.8366


121.1790, 5.4387,
10.6441

 29.8828, 6.0923,
4.0965

135.2233, 5.1156,
11.5645

 21.6689, 5.8285,
3.3746

149.7718, 4.7513,
12.5068

 14.3864, 5.4385,
2.6644

164.8076, 4.3481,

 8.0467, 5.4140,

13.4706

2.4937

180.3154, 3.9079,
14.4555

0.0000, NaN, NaN

0.0000, NaN, NaN

■ 70.4553, 6.2621,
7.1867

■ 70.4553, 6.2621,
7.1867

■ 64.0343, 14.0388,
9.3322

■ 77.2615, -1.1882,
5.1818

■ 58.0661, 22.1349,
11.6155

■ 84.3909, -8.3274,
3.3025

■ 52.6419, 30.4631,
14.0156

■ 91.8001, -15.1936,
1.5349

■ 47.8695, 38.8127,
16.4697

■ 96.1466, -19.0121,
0.5712

■ 43.8684, 46.7887,

18.8537

■ 40.7534, 53.7946,
20.9762

■ 38.6013, 59.1398,
22.6112

■ 37.4057, 62.3185,
23.5889

■ 37.0167, 63.3882,
23.9192

Harmonies

Analogous

The Analogous color harmony consists of three colors that are next to each other on the color wheel.



70.4569, 6.7887, 2.1528



70.4553, 6.2621, 7.1867



70.4569, 3.0015, 11.0357

Triad

The Triadic color harmony groups three colors that are evenly spaced from another and form a triangle on the color wheel.



70.4569, 6.2599, 7.1879



70.4569, -11.5938, 9.8646



70.4569, -5.5019, -6.6350

Complementary

The Complementary color scheme is a pair of colors which are on the opposite of each other on the color wheel.



70.4553, 6.2621, 7.1867



77.7485, -13.2278, 1.1793

Split Complementary

Split-complementary colors differ from the complementary color scheme. The scheme consists of three colors, the original color and two neighbors of the complement color.



70.4569, -10.2819, -4.2160



70.4553, 6.2621, 7.1867



70.4569, -13.7284, 5.4770

Square

The Square scheme is like the rectangle color scheme, but the four colors are evenly spaced on the color wheel.



70.4569, 6.2599, 7.1879



70.4569, -7.3416, 12.4983



70.4569, -13.2555, 0.3091



70.4569, -0.1118, -6.0902

Rectangle

The Rectangle color scheme consists of four colors that form a rectangle on the color wheel.



70.4553, 6.2621, 7.1867



70.4569, -0.2273, 12.5324



70.4569, -13.2555, 0.3091



70.4569, -7.2306, -6.1350

Sweetspot

The Sweet Spot groups the original color and five complimentary colors.



70.4569, 6.2599, 7.1879



96.4495, -1.6985, 6.3965



71.4129, 11.3355, -6.4199



44.3164, -0.4661, 3.0444

0.0000, NaN, NaN



46.2646, -2.4686, 2.5136

Same Dimension

The Same Dimension uses a secret algorithm to generate beautiful new colors.



70.4569, 6.2599, 7.1879



85.3878, 10.5692, 9.7112



74.8517, -1.4235, 11.8949



34.3635, 1.2049, 2.8859



28.9107, 49.5063, 18.6813



6.8369, 11.7041, 4.4177

Inverse Universe

The Inverse Universe completely reimagines the original color for something new.



77.7485, -13.2278, 1.1793



96.2713, -18.5515, 0.7316



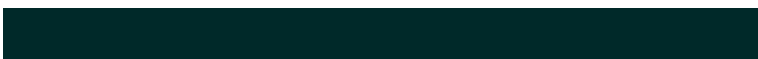
73.0666, -5.7887, -4.5549



36.6154, -4.8052, 1.0331



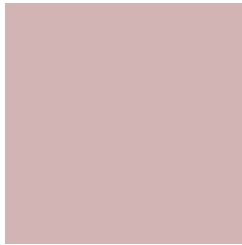
55.6296, -29.4875, -5.8772



13.1545, -6.9730, -1.3893

Previews

White Background



This preview shows how the HunterLab color 70.4553, 6.2621, 7.1867 looks on a white background.

Color Contrast Check

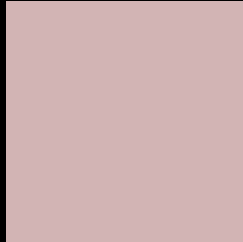
Large Text (above 18pt) WCAG AA × Fail

Any Text WCAG AA × Fail

Large Text (above 18pt) WCAG AAA × Fail

Any Text WCAG AAA × Fail

Black Background



This preview shows how the HunterLab color 70.4553, 6.2621, 7.1867 looks on a black background.

Color Contrast Check

Large Text (above 18pt) WCAG AA ✓ Pass

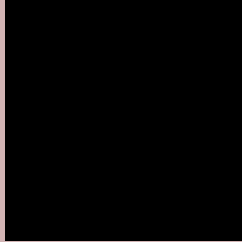
Any Text WCAG AA ✓ Pass

Large Text (above 18pt) WCAG AAA ✓ Pass

Any Text WCAG AAA ✓ Pass

If you want to check with other color combinations, try the [Color Contrast Checker](#).

HunterLab 70.4553, 6.2621, 7.1867 Background



This preview shows how black text looks on a background with the HunterLab color 70.4553, 6.2621, 7.1867.



This preview shows how white text looks on a background with the HunterLab color 70.4553, 6.2621,

7.1867.

Color Blindness Simulation

Color vision deficiency is a very complex topic, and I could not describe the different causes any better than Wikipedia does, so if you want to learn more, you should check out their [article about color blindness](#).

Dichromacy



Original Color

70.4553, 6.2621, 7.1867

Protanopia

70.4365, -2.6565, 5.6460

Deuteranopia

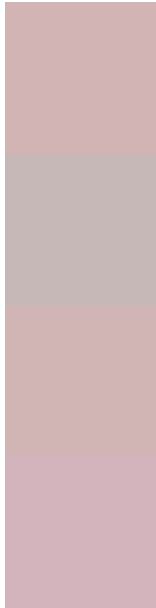
70.5358, 5.0540, 7.2566



Tritanopia

70.4582, 9.9208, 1.6252

Trichromacy



Original Color

70.4553, 6.2621, 7.1867

Protanomaly

70.4728, 0.4619, 6.1998

Deuteranomaly

70.6388, 5.3992, 7.3790

Tritanomaly

70.5124, 8.3947, 3.5915

Monochromacy



Original Color

70.4553, 6.2621, 7.1867

Achromatopsia

71.3359, -3.8063, 3.8758

Achromatomaly

71.0868, -0.2377, 5.0539

CSS Examples

Text

The CSS property to change the color of the text to HunterLab 70.4553, 6.2621, 7.1867 is called "color". The color property can be set on classes, ids or directly on the HTML element.

This example shows how text in the color `rgb(210, 180, 180)` looks like.

```
.text, #text, p{  
    color:rgb(210, 180, 180)  
}
```

If you want to add a text shadow in that color use the text-shadow property, you can generate a text shadow directly with our [CSS Text Shadow Generator](#).

Here you see how black text with a 4 pixel rgb(210, 180, 180) colored shadow looks like.

```
.shadow{ text-shadow: 4px 4px 2px rgb(210, 180, 180) }
```

Border

The CSS property to change the border of an element to HunterLab 70.4553, 6.2621, 7.1867 is called "border".

The border property can be set on classes, ids or directly on the HTML element.

This example shows the color as border, it can be applied via the CSS property "border" or "border-color".

```
.border, #border, table{ border:4px solid rgb(210, 180, 180) }
```


If only the border color should be changed use the property `border-color`.

```
.border{ border-color:rgb(210, 180, 180) }
```

If you want to add a box shadow in that color use:

Here you see how a box with a 4 pixel `rgb(210, 180, 180)` colored shadow looks like.

```
.boxshadow{ -moz-box-shadow:4px 4px 4px  
4px rgb(210, 180, 180); -webkit-box-  
shadow:4px 4px 4px 4px rgb(210, 180, 180);  
box-shadow:4px 4px 4px 4px rgb(210, 180,  
180) }
```

Background

The CSS property to change the background color of an element to HunterLab 70.4553, 6.2621, 7.1867 is called "background". The background property can be set on classes, ids or directly on the HTML element.

```
.background, #background, body{  
background: rgb(210, 180, 180) }
```

If only the background color should be changed can be used:

```
.background{ background-color: rgb(210,  
180, 180) }
```

This example shows the color as background, it is applied via the CSS property "background".

To optimize and compress your CSS code, you can use our [online CSS compressor and optimizer](#) based on csstidy. If you want to create a linear or radial gradient as background or border, check our [CSS Gradient Generator](#).

Hey! You found this booklet interesting? Support Converting Colors with the new Membership Option!

The pro membership hides all ads, plus gives you double the colors in the color bucket, and more awesome pro features!

[Learn more, Memberships starting at \\$2.50/m!](#)

**Follow me
on Twitter!**

@ConvertingColor