

Converting Colors

HunterLab(70.4647, 3.9275,
21.7563)

Have a look what the booklet for
HunterLab(70.4647, 3.9275,
21.7563) contains.

HunterLab(70.3783, 4.1410, 21.5470)	3
<i>Conversions</i>	4
<i>Details</i>	6
<i>Harmonies</i>	12
<i>Previews</i>	24
<i>Color Blindness Simulation</i>	28
<i>CSS Examples</i>	31

Color

**HunterLab(70.3783, 4.1410,
21.5470)**

Conversions

Conversions Part 1

Format	Color
Hex	DAB48F
RGB	218, 180, 143
RGB Percent	85%, 71%, 56%
CMY	0.1451, 0.2941, 0.4392
CMYK	0.00, 0.17, 0.34, 0.15
HSL	30°, 50%, 71%
HSV	30°, 34%, 85%
XYZ	50.1926, 49.5311, 32.9015
YIQ	187.1440, 34.5250, -3.4510

Conversions

Conversions Part 2

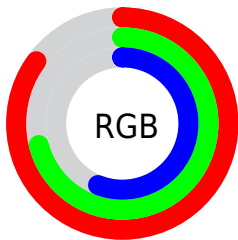
Format	Color
RYB	218, 216, 143
Decimal	14333071
CIELab	75.78, 8.54, 24.03
CIELCh	76, 25.505, 70.446
Yxy	49.5334, 0.3785, 0.3735
Android (android.graphics.Color)	4292523151 (0xFFDAB48F)
YUV	187.1440, -21.7630, 27.0607
Hunter-Lab	70.3783, 4.1410, 21.5470

Details

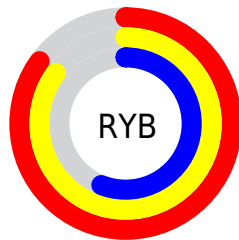
The HunterLab color $70.3783, 4.1410, 21.5470$ is a light color, and the websafe version is hex FFCC99 . A complement of this color would be $66.2931, -6.9474, -18.5948$, and the grayscale version is $70.6338, -3.7688, 3.8377$.

A 20% lighter version of the original color is $92.3483, -4.4388, 22.9130$, and $48.6136, 4.5971, 17.6871$ is the 20% darker color. If you saturate the color by 10%, you get $66.8225, 7.4284, 25.1982$, and if you desaturate by 10%, it is $74.0932, 1.2213, 17.2677$.

Distribution



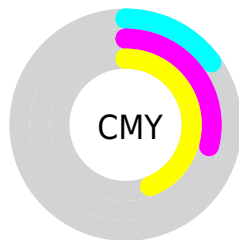
- Red (85%)
- Green (71%)
- Blue (56%)



- Red (85%)
- Yellow (85%)
- Blue (56%)



- Cyan (0%)
- Magenta (17%)
- Yellow (34%)
- Black (15%)




- Cyan (15%)
- Magenta (29%)
- Yellow (44%)

Brightness & Saturation Gradients


These gradients show how the HunterLab color 70.3783, 4.1410, 21.5470 changes by changing the brightness by 10 percent. The first figure shows a shift by +10% for each color and the second figure -10%.


Similar to the brightness gradients but the following saturation gradients show a change of the HunterLab color 70.3783, 4.1410, 21.5470 by changing the saturation by 10% instead.


 70.3783, 4.1410,
21.5470

 70.3783, 4.1410,
21.5470

196.1730, 0.5191,
37.6358

 59.1969, 4.3126,
19.6223

 94.5955, 3.6297,
25.2649

 48.6783, 4.4260,
17.6325


 107.5691, 3.3037,
27.0764

 38.8692, 4.4711,
15.5566


121.0868, 2.9344,
28.8659

 29.8250, 4.4377,
13.3628

135.1277, 2.5244,
30.6388

 21.6170, 4.3116,
11.0026

149.6729, 2.0759,
32.3991

 14.3411, 4.0718,
9.1208

164.7055, 1.5911,

 8.0006, 4.2220,

34.1503

5.6004

180.2102, 1.0717,
35.8951

0.0000, NaN, NaN

0.0000, NaN, NaN

■ 70.3783, 4.1410,
21.5470

■ 70.3783, 4.1410,
21.5470

■ 66.8225, 7.4284,
25.1982

■ 74.0932, 1.2213,
17.2677

■ 63.4347, 11.1066,
28.1552

■ 77.9494, -1.3438,
12.4188

■ 60.2312, 15.1788,
30.3583

■ 81.9371, -3.5806,
7.0583

■ 57.2271, 19.6361,
31.7569

■ 86.0457, -5.5138,
1.2378

■ 54.4371, 24.4476,

■ 90.2660, -7.1677,

32.3235

-4.9964

■ 51.8738, 29.5515,
32.0768

■ 93.9153, -12.2977,
-2.0723

■ 50.5352, 32.4694,
31.7080

■ 96.7706, -16.7594,
1.3713

Harmonies

Analogous

The Analogous color harmony consists of three colors that are next to each other on the color wheel.



70.3799, 14.6925, 16.6448



70.3783, 4.1410, 21.5470



70.3799, -7.8976, 22.1923

Triad

The Triadic color harmony groups three colors that are evenly spaced from another and form a triangle on the color wheel.



70.3799, 4.1384, 21.5479



70.3799, -25.0611, -0.2698



70.3799, 11.8584, -15.0223

Complementary

The Complementary color scheme is a pair of colors which are on the opposite of each other on the color wheel.



70.3783, 4.1410, 21.5470



66.2931, -6.9474, -18.5948

Split Complementary

Split-complementary colors differ from the complementary color scheme. The scheme consists of three colors, the original color and two neighbors of the complement color.



70.3799, 0.4774, -21.3793



70.3783, 4.1410, 21.5470



70.3799, -20.4860, -11.9632

Square

The Square scheme is like the rectangle color scheme, but the four colors are evenly spaced on the color wheel.



70.3799, 4.1384, 21.5479



70.3799, -24.2262, 10.7943



70.3799, -11.3229, -20.1745



70.3799, 19.3523, -3.9256

Rectangle

The Rectangle color scheme consists of four colors that form a rectangle on the color wheel.



70.3783, 4.1410, 21.5470



70.3799, -15.0835, 20.2608



70.3799, -11.3229, -20.1745



70.3799, 8.3300, -17.8622

Sweetspot

The Sweet Spot groups the original color and five complimentary colors.



70.3799, 4.1384, 21.5479



95.1304, -2.8038, 12.1407



61.5775, 28.9284, -4.0318



43.7006, -1.1186, 6.0316

0.0000, NaN, NaN



46.2646, -2.4686, 2.5136

Same Dimension

The Same Dimension uses a secret algorithm to generate beautiful new colors.



70.3799, 4.1384, 21.5479



81.0764, 7.6287, 28.8526



81.4773, -14.1612, 31.0475



37.5596, -1.1723, 4.6140



39.3887, 24.4901, 24.6998



10.8507, 4.3980, 6.7632

Inverse Universe

The Inverse Universe completely reimagines the original color for something new.



66.2931, -6.9474, -18.5948



75.2696, -8.0142, -28.2822



55.6098, 11.7997, -36.2462



37.0164, -2.6631, -0.7060



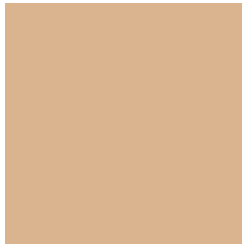
31.6017, 7.1609, -54.9577



9.0519, -0.0133, -11.2852

Previews

White Background



This preview shows how the HunterLab color 70.3783, 4.1410, 21.5470 looks on a white background.

Color Contrast Check

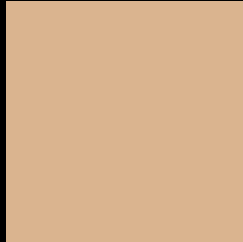
Large Text (above 18pt) WCAG AA × Fail

Any Text WCAG AA × Fail

Large Text (above 18pt) WCAG AAA × Fail

Any Text WCAG AAA × Fail

Black Background



This preview shows how the HunterLab color 70.3783, 4.1410, 21.5470 looks on a black background.

Color Contrast Check

Large Text (above 18pt) WCAG AA ✓ Pass

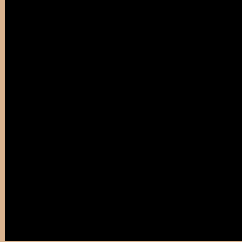
Any Text WCAG AA ✓ Pass

Large Text (above 18pt) WCAG AAA ✓ Pass

Any Text WCAG AAA ✓ Pass

If you want to check with other color combinations, try the [Color Contrast Checker](#).

HunterLab 70.3783, 4.1410, 21.5470 Background



This preview shows how black text looks on a background with the HunterLab color 70.3783, 4.1410, 21.5470.



This preview shows how white text looks on a background with the HunterLab color 70.3783, 4.1410,

21.5470.

Color Blindness Simulation

Color vision deficiency is a very complex topic, and I could not describe the different causes any better than Wikipedia does, so if you want to learn more, you should check out their [article about color blindness](#).

Dichromacy



Original Color

70.3783, 4.1410, 21.5470

Protanopia

70.5394, -5.7458, 20.5082

Deuteranopia

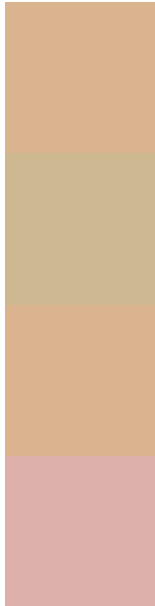
70.3129, 5.3911, 21.5081



Tritanopia

70.3903, 15.1155, 4.0390

Trichromacy



Original Color

70.3783, 4.1410, 21.5470

Protanomaly

70.3186, -1.9613, 20.7090

Deuteranomaly

70.2022, 5.0201, 21.3989

Tritanomaly

70.2589, 10.9236, 10.9714

Monochromacy



Original Color

70.3783, 4.1410, 21.5470

Achromatopsia

70.4935, -3.7614, 3.8300

Achromatomaly

70.1620, -1.2260, 10.6541

CSS Examples

Text

The CSS property to change the color of the text to HunterLab 70.3783, 4.1410, 21.5470 is called "color". The color property can be set on classes, ids or directly on the HTML element.

This example shows how text in the color `rgb(218, 180, 143)` looks like.

```
.text, #text, p{  
    color:rgb(218, 180, 143)  
}
```

If you want to add a text shadow in that color use the text-shadow property, you can generate a text shadow directly with our [CSS Text Shadow Generator](#).

Here you see how black text with a 4 pixel rgb(218, 180, 143) colored shadow looks like.

```
.shadow{ text-shadow: 4px 4px 2px rgb(218, 180, 143) }
```

Border

The CSS property to change the border of an element to HunterLab 70.3783, 4.1410, 21.5470 is called "border". The border property can be set on classes, ids or directly on the HTML element.

This example shows the color as border, it can be applied via the CSS property "border" or "border-color".

```
.border, #border, table{ border:4px solid rgb(218, 180, 143) }
```


If only the border color should be changed use the property `border-color`.

```
.border{ border-color:rgb(218, 180, 143) }
```

If you want to add a box shadow in that color use:

Here you see how a box with a 4 pixel `rgb(218, 180, 143)` colored shadow looks like.

```
.boxshadow{ -moz-box-shadow:4px 4px 4px  
4px rgb(218, 180, 143); -webkit-box-  
shadow:4px 4px 4px 4px rgb(218, 180, 143);  
box-shadow:4px 4px 4px 4px rgb(218, 180,  
143) }
```

Background

The CSS property to change the background color of an element to HunterLab 70.3783, 4.1410, 21.5470 is called "background". The background property can be set on classes, ids or directly on the HTML element.

```
.background, #background, body{  
background: rgb(218, 180, 143) }
```

If only the background color should be changed can be used:

```
.background{ background-color: rgb(218,  
180, 143) }
```

This example shows the color as background, it is applied via the CSS property "background".

To optimize and compress your CSS code, you can use our [online CSS compressor and optimizer](#) based on csstidy. If you want to create a linear or radial gradient as background or border, check our [CSS Gradient Generator](#).

Hey! You found this booklet interesting? Support Converting Colors with the new Membership Option!

The pro membership hides all ads, plus gives you double the colors in the color bucket, and more awesome pro features!

[Learn more, Memberships starting at \\$2.50/m!](#)

**Follow me
on Twitter!**

@ConvertingColor