

Converting Colors

HunterLab(70.4700, 4.7609,
8.9456)

Have a look what the booklet for
HunterLab(70.4700, 4.7609, 8.9456)
contains.

HunterLab(70.5249, 4.7898, 9.0100)	3
<i>Conversions</i>	4
<i>Details</i>	6
<i>Harmonies</i>	12
<i>Previews</i>	24
<i>Color Blindness Simulation</i>	28
<i>CSS Examples</i>	31

Color

**HunterLab(70.5249, 4.7898,
9.0100)**

Conversions

Conversions Part 1

Format	Color
Hex	D1B5B0
RGB	209, 181, 176
RGB Percent	82%, 71%, 69%
CMY	0.1804, 0.2902, 0.3098
CMYK	0.00, 0.13, 0.16, 0.18
HSL	9°, 26%, 75%
HSV	9°, 16%, 82%
XYZ	50.6548, 49.7376, 48.0048
YIQ	188.8020, 18.2930, 4.3810

Conversions

Conversions Part 2

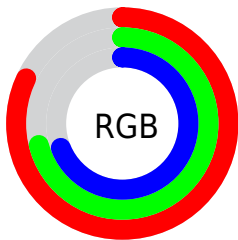
Format	Color
R _Y B	209, 182, 176
Decimal	13743536
CIE Lab	75.91, 9.22, 6.24
CIE LCh	76, 11.139, 34.091
Yxy	49.7398, 0.3413, 0.3352
Android (android.graphics.Color)	4291933616 (0xFFD1B5B0)
YUV	188.8020, -6.3114, 17.7136
Hunter-Lab	70.5249, 4.7898, 9.0100

Details

The HunterLab color $70.5249, 4.7898, 9.0100$ is a light color, and the websafe version is hex $CC9999$. A complement of this color would be $75.5102, -11.5699, -1.0378$, and the grayscale version is $71.2741, -3.8030, 3.8725$.

A 20% lighter version of the original color is $93.6240, 0.2933, 9.3489$, and $48.7479, 5.0752, 6.9346$ is the 20% darker color. If you saturate the color by 10%, you get $64.9748, 10.9232, 11.8905$, and if you desaturate by 10%, it is $76.3594, -1.0289, 6.0651$.

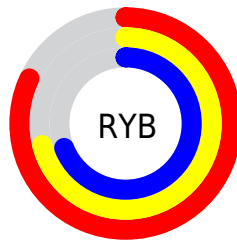
Distribution



Red (82%)

Green (71%)

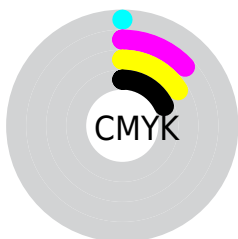
Blue (69%)



Red (82%)

Yellow (71%)

Blue (69%)

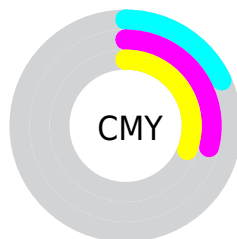


Cyan (0%)

Magenta (13%)

Yellow (16%)

Black (18%)



Cyan (18%)


Magenta (29%)

Yellow (31%)

Brightness & Saturation Gradients


These gradients show how the HunterLab color 70.5249, 4.7898, 9.0100 changes by changing the brightness by 10 percent. The first figure shows a shift by +10% for each color and the second figure -10%.


Similar to the brightness gradients but the following saturation gradients show a change of the HunterLab color 70.5249, 4.7898, 9.0100 by changing the saturation by 10% instead.

 70.5249, 4.7898,
9.0100

 70.5249, 4.7898,
9.0100


196.3791, 1.4091,
18.1106

 59.3353, 4.9294,
8.0887


 94.7572, 4.3395,
10.9060

 48.8080, 5.0086,
7.1811


107.7378, 4.0419,
11.8800

 38.9894, 5.0173,
6.2857

121.2624, 3.6999,
12.8722

 29.9351, 4.9452,
5.3982

135.3098, 3.3164,
13.8830

 21.7159, 4.7774,
4.5110

149.8613, 2.8935,
14.9122

 14.4274, 4.4920,
3.6100

164.9000, 2.4335,

 8.0882, 4.5378,

15.9599

3.6399

180.4106, 1.9382,
17.0261

0.0000, NaN, NaN

0.0000, NaN, NaN

■ 70.5249, 4.7898,
9.0100

■ 70.5249, 4.7898,
9.0100

■ 64.9748, 10.9232,
11.8905

■ 76.3594, -1.0289,
6.0651

■ 59.7490, 17.3900,
14.6675

■ 82.4368, -6.5533,
3.0749

■ 54.9034, 24.1698,
17.2873

■ 88.7289, -11.8183,
0.0544

■ 50.5020, 31.1894,
19.6698

■ 95.0534, -17.7408,
-0.7512

■ 46.6175, 38.2899,

■ 96.0705, -19.2880,

21.7065

0.4733

■ 43.3262, 45.1965,
23.2656

■ 40.6975, 51.5126,
24.2190

■ 38.7764, 56.7695,
24.5013

■ 38.1731, 58.5291,
24.5468

Harmonies

Analogous

The Analogous color harmony consists of three colors that are next to each other on the color wheel.



70.5265, 6.5852, 4.5204



70.5249, 4.7898, 9.0100



70.5265, 0.6975, 11.9404

Triad

The Triadic color harmony groups three colors that are evenly spaced from another and form a triangle on the color wheel.



70.5265, 4.7876, 9.0111



70.5265, -12.6176, 7.9066



70.5265, -3.0455, -6.4247

Complementary

The Complementary color scheme is a pair of colors which are on the opposite of each other on the color wheel.



70.5249, 4.7898, 9.0100



75.5102, -11.5699, -1.0378

Split Complementary

Split-complementary colors differ from the complementary color scheme. The scheme consists of three colors, the original color and two neighbors of the complement color.



70.5265, -8.1230, -5.3546



70.5249, 4.7898, 9.0100



70.5265, -13.5543, 3.1506

Square

The Square scheme is like the rectangle color scheme, but the four colors are evenly spaced on the color wheel.



70.5265, 4.7876, 9.0111



70.5265, -9.3353, 11.3362



70.5265, -11.9322, -1.7573



70.5265, 1.9798, -4.5840

Rectangle

The Rectangle color scheme consists of four colors that form a rectangle on the color wheel.



70.5249, 4.7898, 9.0100



70.5265, -2.7248, 12.7368



70.5265, -11.9322, -1.7573



70.5265, -4.8030, -6.3943

Sweetspot

The Sweet Spot groups the original color and five complimentary colors.



70.5265, 4.7876, 9.0111



96.1757, -1.8067, 7.3232



69.9776, 12.0321, -5.0984



44.2494, -0.6030, 3.5105

0.0000, NaN, NaN



46.2646, -2.4686, 2.5136

Same Dimension

The Same Dimension uses a secret algorithm to generate beautiful new colors.



70.5265, 4.7876, 9.0111



85.8975, 8.5841, 12.5328



75.3841, -3.5833, 14.0829



34.7757, 0.4879, 3.3444



30.1256, 45.4682, 19.3592



7.7564, 8.8331, 4.9341

Inverse Universe

The Inverse Universe completely reimagines the original color for something new.



75.5102, -11.5699, -1.0378



93.4572, -16.2584, -2.7166



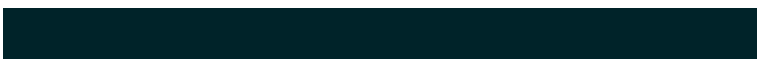
70.4334, -3.3833, -7.4368



36.1785, -4.1095, 0.5172



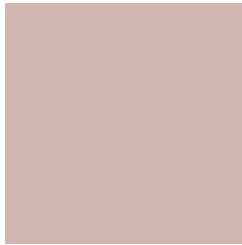
47.3469, -19.1986, -17.7353



11.5678, -5.0216, -3.6186

Previews

White Background



This preview shows how the HunterLab color 70.5249, 4.7898, 9.0100 looks on a white background.

Color Contrast Check

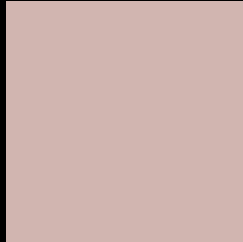
Large Text (above 18pt) WCAG AA × Fail

Any Text WCAG AA × Fail

Large Text (above 18pt) WCAG AAA × Fail

Any Text WCAG AAA × Fail

Black Background



This preview shows how the HunterLab color 70.5249, 4.7898, 9.0100 looks on a black background.

Color Contrast Check

Large Text (above 18pt) WCAG AA ✓ Pass

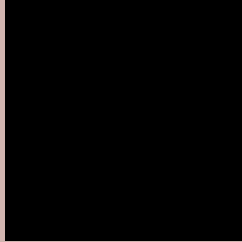
Any Text WCAG AA ✓ Pass

Large Text (above 18pt) WCAG AAA ✓ Pass

Any Text WCAG AAA ✓ Pass

If you want to check with other color combinations, try the [Color Contrast Checker](#).

HunterLab 70.5249, 4.7898, 9.0100 Background



This preview shows how black text looks on a background with the HunterLab color 70.5249, 4.7898, 9.0100.



This preview shows how white text looks on a background with the HunterLab color 70.5249, 4.7898,

Color Blindness Simulation

Color vision deficiency is a very complex topic, and I could not describe the different causes any better than Wikipedia does, so if you want to learn more, you should check out their [article about color blindness](#).

Dichromacy



Original Color

70.5249, 4.7898, 9.0100

Protanopia

70.5053, -2.6515, 7.5348

Deuteranopia

70.6286, 5.1376, 9.1306



Tritanopia

70.3530, 9.5750, 1.4916

Trichromacy



Original Color

70.5249, 4.7898, 9.0100

Protanomaly

70.4538, 0.1657, 7.9708

Deuteranomaly

70.6286, 5.1376, 9.1306

Tritanomaly

70.3470, 7.7257, 4.3300

Monochromacy



Original Color

70.5249, 4.7898, 9.0100

Achromatopsia

71.3359, -3.8063, 3.8758

Achromatomaly

70.9325, -0.8861, 5.7885

CSS Examples

Text

The CSS property to change the color of the text to HunterLab 70.5249, 4.7898, 9.0100 is called "color". The color property can be set on classes, ids or directly on the HTML element.

This example shows how text in the color `rgb(209, 181, 176)` looks like.

```
.text, #text, p{  
    color:rgb(209, 181, 176)  
}
```

If you want to add a text shadow in that color use the text-shadow property, you can generate a text shadow directly with our [CSS Text Shadow Generator](#).

Here you see how black text with a 4 pixel rgb(209, 181, 176) colored shadow looks like.

```
.shadow{ text-shadow: 4px 4px 2px rgb(209, 181, 176) }
```

Border

The CSS property to change the border of an element to HunterLab 70.5249, 4.7898, 9.0100 is called "border".

The border property can be set on classes, ids or directly on the HTML element.

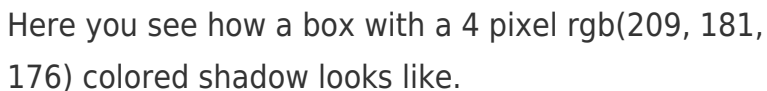
This example shows the color as border, it can be applied via the CSS property "border" or "border-color".

```
.border, #border, table{ border:4px solid rgb(209, 181, 176) }
```


If only the border color should be changed use the property `border-color`.

```
.border{ border-color:rgb(209, 181, 176) }
```

If you want to add a box shadow in that color use:



Here you see how a box with a 4 pixel `rgb(209, 181, 176)` colored shadow looks like.

```
.boxshadow{ -moz-box-shadow:4px 4px 4px  
4px rgb(209, 181, 176); -webkit-box-  
shadow:4px 4px 4px 4px rgb(209, 181, 176);  
box-shadow:4px 4px 4px 4px rgb(209, 181,  
176) }
```

Background

The CSS property to change the background color of an element to HunterLab 70.5249, 4.7898, 9.0100 is called "background". The background property can be set on classes, ids or directly on the HTML element.

```
.background, #background, body{  
background: rgb(209, 181, 176) }
```

If only the background color should be changed can be used:

```
.background{ background-color: rgb(209,  
181, 176) }
```

This example shows the color as background, it is applied via the CSS property "background".

To optimize and compress your CSS code, you can use our [online CSS compressor and optimizer](#) based on csstidy. If you want to create a linear or radial gradient as background or border, check our [CSS Gradient Generator](#).

Hey! You found this booklet interesting? Support Converting Colors with the new Membership Option!

The pro membership hides all ads, plus gives you double the colors in the color bucket, and more awesome pro features!

[Learn more, Memberships starting at \\$2.50/m!](#)

**Follow me
on Twitter!**

@ConvertingColor