

# Converting Colors

HunterLab(70.4882, 2.5215,  
18.4917)

Have a look what the booklet for  
HunterLab(70.4882, 2.5215,  
18.4917) contains.

<b>HunterLab(70.6180, 2.3882, 18.6157)</b> .....	3
<b><i>Conversions</i></b> .....	4
<b><i>Details</i></b> .....	6
<b><i>Harmonies</i></b> .....	12
<b><i>Previews</i></b> .....	24
<b><i>Color Blindness Simulation</i></b> .....	28
<b><i>CSS Examples</i></b> .....	31

# Color

**HunterLab(70.6180, 2.3882,  
18.6157)**

# Conversions

## Conversions Part 1

<b>Format</b>	<b>Color</b>
Hex	D5B698
RGB	213, 182, 152
RGB Percent	84%, 71%, 60%
CMY	0.1647, 0.2863, 0.4039
CMYK	0.00, 0.15, 0.29, 0.16
HSL	30°, 42%, 72%
HSV	30°, 29%, 84%
XYZ	49.8360, 49.8690, 36.7048
YIQ	187.8490, 28.1060, -2.7580

# Conversions

## Conversions Part 2

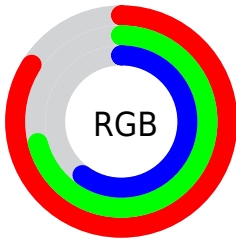
<b>Format</b>	<b>Color</b>
R <sub>Y</sub> B	213, 211, 152
Decimal	14005912
CIE Lab	75.99, 6.68, 19.41
CIE LCh	76, 20.527, 71.010
Yxy	49.8713, 0.3653, 0.3656
Android (android.graphics.Color)	4292195992 (0xFFD5B698)
YUV	187.8490, -17.6736, 22.0574
Hunter-Lab	70.6180, 2.3882, 18.6157

# Details

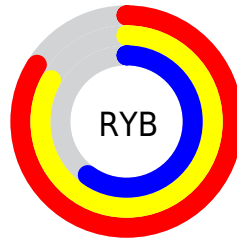
The HunterLab color  $70.6180, 2.3882, 18.6157$  is a light color, and the websafe version is hex `FFCC99`. A complement of this color would be  $67.3388, -6.7961, -14.0517$ , and the grayscale version is  $70.9159, -3.7839, 3.8530$ .

A 20% lighter version of the original color is  $93.2016, -4.2268, 20.2101$ , and  $48.7936, 2.7893, 15.1548$  is the 20% darker color. If you saturate the color by 10%, you get  $67.0608, 5.3896, 22.5260$ , and if you desaturate by 10%, it is  $74.3230, -0.2671, 14.1321$ .

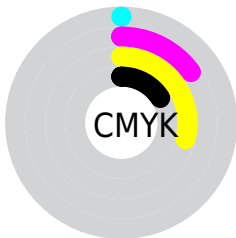
# Distribution



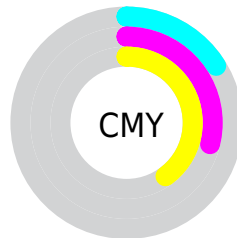
- Red (84%)
- Green (71%)
- Blue (60%)



- Red (84%)
- Yellow (83%)
- Blue (60%)



- Cyan (0%)
- Magenta (15%)
- Yellow (29%)
- Black (16%)



- Cyan (16%)
- Magenta (29%)
- Yellow (40%)

# Brightness & Saturation Gradients

These gradients show how the HunterLab color 70.6180, 2.3882, 18.6157 changes by changing the brightness by 10 percent. The first figure shows a shift by +10% for each color and the second figure -10%.

Similar to the brightness gradients but the following saturation gradients show a change of the HunterLab color 70.6180, 2.3882, 18.6157 by changing the saturation by 10% instead.



■ 70.6180, 2.3882,  
18.6157

■ 70.6180, 2.3882,  
18.6157

196.5102, -1.9064,  
32.8122

■ 59.4232, 2.6513,  
16.9657

■ 94.8600, 1.7072,  
21.8367

■ 48.8903, 2.8614,  
15.2731

■ 107.8451, 1.3017,  
23.4207

■ 39.0659, 3.0093,  
13.5221

121.3740, 0.8558,  
24.9941

■ 30.0051, 3.0865,  
11.6881

135.4255, 0.3719,  
26.5609

■ 21.7789, 3.0805,  
9.7329

149.9811, -0.1479,  
28.1239

■ 14.4823, 2.9730,  
7.8021

165.0236, -0.7019,

■ 8.1434, 3.1392,

29.6855

5.7004

180.5380, -1.2885,  
31.2478

0.0000, NaN, NaN

0.0000, NaN, NaN

■ 70.6180, 2.3882,  
18.6157

■ 70.6180, 2.3882,  
18.6157

■ 67.0608, 5.3896,  
22.5260

■ 74.3230, -0.2671,  
14.1321

■ 63.6595, 8.7627,  
25.7994

■ 78.1591, -2.5913,  
9.1295

■ 60.4296, 12.5167,  
28.3755

■ 82.1174, -4.6104,  
3.6615

■ 57.3858, 16.6517,  
30.1982

■ 86.1881, -6.3486,  
-2.2250

■ 54.5428, 21.1511,

■ 90.2367, -8.5240,

31.2253

-6.7078

■ 51.9145, 25.9733,  
31.4447

■ 93.7301, -14.0858,  
-2.3358

■ 49.5085, 31.0262,  
30.9503

■ 96.3775, -18.1769,  
0.8678

■ 49.1960, 31.7149,  
30.8696

# Harmonies

## Analogous

The Analogous color harmony consists of three colors that are next to each other on the color wheel.



70.6196, 10.8250, 14.5005



70.6180, 2.3882, 18.6157



70.6196, -7.2904, 19.1052

# Triad

The Triadic color harmony groups three colors that are evenly spaced from another and form a triangle on the color wheel.



70.6196, 2.3858, 18.6167



70.6196, -21.1244, 0.3794



70.6196, 8.8575, -10.8599

# Complementary

The Complementary color scheme is a pair of colors which are on the opposite of each other on the color wheel.



70.6180, 2.3882, 18.6157



67.3388, -6.7961, -14.0517

# Split Complementary

Split-complementary colors differ from the complementary color scheme. The scheme consists of three colors, the original color and two neighbors of the complement color.



70.6196, -0.1831, -15.8317



70.6180, 2.3882, 18.6157



70.6196, -17.2717, -8.7853

# Square

The Square scheme is like the rectangle color scheme, but the four colors are evenly spaced on the color wheel.



70.6196, 2.3858, 18.6167



70.6196, -20.5194, 9.3648



70.6196, -9.7255, -15.0252



70.6196, 14.6982, -2.1620



# Rectangle

The Rectangle color scheme consists of four colors that form a rectangle on the color wheel.



70.6180, 2.3882, 18.6157



70.6196, -13.1047, 17.3944



70.6196, -9.7255, -15.0252



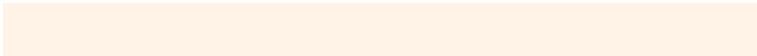
70.6196, 6.0723, -13.0720

# Sweetspot

The Sweet Spot groups the original color and five complimentary colors.



70.6196, 2.3858, 18.6167



95.5997, -3.0555, 11.4838



63.2800, 22.5999, -2.8516



43.9050, -1.2299, 5.7454

0.0000, NaN, NaN



46.2646, -2.4686, 2.5136



# Same Dimension

The Same Dimension uses a secret algorithm to generate beautiful new colors.



70.6196, 2.3858, 18.6167



84.0594, 4.9737, 25.6510



79.6819, -12.5435, 26.7759



36.6325, -1.1386, 4.4891



38.7137, 24.1674, 24.2783



10.3415, 4.0846, 6.4439



# Inverse Universe

The Inverse Universe completely reimagines the original color for something new.



67.3388, -6.7961, -14.0517



79.2730, -8.3659, -22.0580



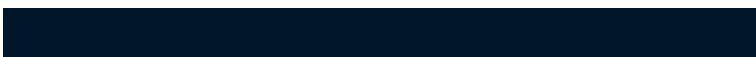
58.5389, 8.4084, -27.5400



36.1129, -2.6034, -0.6756



31.1780, 6.8666, -53.7928



8.6710, -0.1480, -10.5185



# Previews

## White Background



This preview shows how the HunterLab color 70.6180, 2.3882, 18.6157 looks on a white background.

## Color Contrast Check

Large Text (above 18pt) WCAG AA × Fail

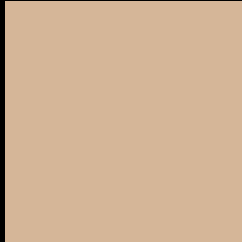
Any Text WCAG AA × Fail

Large Text (above 18pt) WCAG AAA × Fail

Any Text WCAG AAA × Fail



# Black Background



This preview shows how the HunterLab color 70.6180, 2.3882, 18.6157 looks on a black background.

## Color Contrast Check

Large Text (above 18pt) WCAG AA ✓ Pass

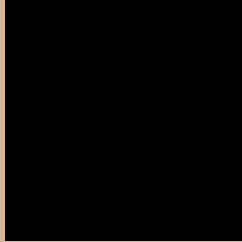
Any Text WCAG AA ✓ Pass

Large Text (above 18pt) WCAG AAA ✓ Pass

Any Text WCAG AAA ✓ Pass

If you want to check with other color combinations, try the [Color Contrast Checker](#).

## HunterLab 70.6180, 2.3882, 18.6157 Background



This preview shows how black text looks on a background with the HunterLab color 70.6180, 2.3882, 18.6157.



This preview shows how white text looks on a background with the HunterLab color 70.6180, 2.3882,



# Color Blindness Simulation

Color vision deficiency is a very complex topic, and I could not describe the different causes any better than Wikipedia does, so if you want to learn more, you should check out their [article about color blindness](#).

## Dichromacy



### Original Color

70.6180, 2.3882, 18.6157

### Protanopia

70.6254, -5.0794, 17.7651

### Deuteranopia

70.5797, 5.2200, 18.6281



## Tritanopia

70.6496, 11.8664, 2.8593

# Trichromacy



## Original Color

70.6180, 2.3882, 18.6157

## Protanomaly

70.4942, -2.5134, 18.0471

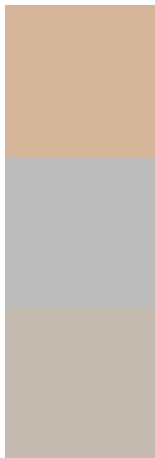
## Deuteranomaly

70.6496, 3.9801, 18.6742

## Tritanomaly

70.6921, 8.2862, 9.2559

# Monochromacy



## Original Color

70.6180, 2.3882, 18.6157

## Achromatopsia

70.9145, -3.7838, 3.8529

## Achromatomaly

70.7695, -1.9636, 9.5949

# CSS Examples

## Text

The CSS property to change the color of the text to HunterLab 70.6180, 2.3882, 18.6157 is called "color". The color property can be set on classes, ids or directly on the HTML element.

This example shows how text in the color `rgb(213, 182, 152)` looks like.

```
.text, #text, p{  
    color:rgb(213, 182, 152)  
}
```

If you want to add a text shadow in that color use the text-shadow property, you can generate a text shadow directly with our [CSS Text Shadow Generator](#).

Here you see how black text with a 4 pixel rgb(213, 182, 152) colored shadow looks like.

```
.shadow{ text-shadow: 4px 4px 2px rgb(213, 182, 152) }
```

## Border

The CSS property to change the border of an element to HunterLab 70.6180, 2.3882, 18.6157 is called "border". The border property can be set on classes, ids or directly on the HTML element.

This example shows the color as border, it can be applied via the CSS property "border" or "border-color".

```
.border, #border, table{ border:4px solid rgb(213, 182, 152) }
```



If only the border color should be changed use the property `border-color`.

```
.border{ border-color:rgb(213, 182, 152) }
```

If you want to add a box shadow in that color use:

Here you see how a box with a 4 pixel `rgb(213, 182, 152)` colored shadow looks like.

```
.boxshadow{ -moz-box-shadow:4px 4px 4px  
4px rgb(213, 182, 152); -webkit-box-  
shadow:4px 4px 4px 4px rgb(213, 182, 152);  
box-shadow:4px 4px 4px 4px rgb(213, 182,  
152) }
```

# Background

The CSS property to change the background color of an element to HunterLab 70.6180, 2.3882, 18.6157 is called "background". The background property can be set on classes, ids or directly on the HTML element.

```
.background, #background, body{  
background: rgb(213, 182, 152) }
```

If only the background color should be changed can be used:

```
.background{ background-color: rgb(213,  
182, 152) }
```

This example shows the color as background, it is applied via the CSS property "background".

To optimize and compress your CSS code, you can use our [online CSS compressor and optimizer](#) based on csstidy. If you want to create a linear or radial gradient as background or border, check our [CSS Gradient Generator](#).

Hey! You found this booklet interesting? Support Converting Colors with the new Membership Option!

The pro membership hides all ads, plus gives you double the colors in the color bucket, and more awesome pro features!

**[Learn more, Memberships starting at \\$2.50/m!](#)**

**Follow me  
on Twitter!**

@ConvertingColor