

Converting Colors

HunterLab(70.5276, 5.2220,
7.0041)

Have a look what the booklet for
HunterLab(70.5276, 5.2220, 7.0041)
contains.

HunterLab(70.5648, 5.2092, 6.8417)	3
<i>Conversions</i>	4
<i>Details</i>	6
<i>Harmonies</i>	12
<i>Previews</i>	24
<i>Color Blindness Simulation</i>	28
<i>CSS Examples</i>	31

Color

**HunterLab(70.5648, 5.2092,
6.8417)**

Conversions

Conversions Part 1

Format	Color
Hex	D0B5B5
RGB	208, 181, 181
RGB Percent	82%, 71%, 71%
CMY	0.1843, 0.2902, 0.2902
CMYK	0.00, 0.13, 0.13, 0.18
HSL	0°, 22%, 76%
HSV	0°, 13%, 82%
XYZ	50.8769, 49.7939, 50.6458
YIQ	189.0730, 16.0920, 5.7240

Conversions

Conversions Part 2

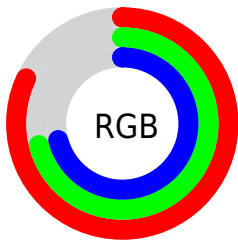
Format	Color
R _Y B	208, 181, 181
Decimal	13678005
CIE Lab	75.94, 9.67, 3.56
CIE LCh	76, 10.302, 20.224
Yxy	49.7961, 0.3362, 0.3291
Android (android.graphics.Color)	4291868085 (0xFFD0B5B5)
YUV	189.0730, -3.9800, 16.5990
Hunter-Lab	70.5648, 5.2092, 6.8417

Details

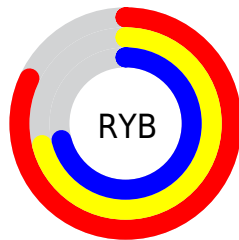
The HunterLab color **70.5648, 5.2092, 6.8417** is a light color, and the websafe version is hex **CCCCCC**. A complement of this color would be **77.1288, -12.3240, 1.4375**, and the grayscale version is **71.3796, -3.8086, 3.8782**.

A 20% lighter version of the original color is **93.7778, 1.1265, 7.1497**, and **48.7536, 5.3060, 5.2991** is the 20% darker color. If you saturate the color by 10%, you get **64.1630, 12.8547, 8.9447**, and if you desaturate by 10%, it is **77.3390, -2.1151, 4.8766**.

Distribution



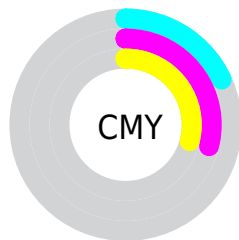
- Red (82%)
- Green (71%)
- Blue (71%)



- Red (82%)
- Yellow (71%)
- Blue (71%)



- Cyan (0%)
- Magenta (13%)
- Yellow (13%)
- Black (18%)





- Cyan (18%)
- Magenta (29%)
- Yellow (29%)

Brightness & Saturation Gradients

These gradients show how the HunterLab color 70.5648, 5.2092, 6.8417 changes by changing the brightness by 10 percent. The first figure shows a shift by +10% for each color and the second figure -10%.


Similar to the brightness gradients but the following saturation gradients show a change of the HunterLab color 70.5648, 5.2092, 6.8417 by changing the saturation by 10% instead.


 70.5648, 5.2092,
6.8417

 70.5648, 5.2092,
6.8417


196.4353, 1.9845,
14.9626

 59.3729, 5.3278,
6.0578


 94.8012, 4.7982,
8.4859

 48.8432, 5.3848,
5.2973


107.7838, 4.5190,
9.3432

 39.0222, 5.3700,
4.5610

121.3102, 4.1948,
10.2239

 29.9651, 5.2727,
3.8482

135.3594, 3.8284,
11.1275

 21.7429, 5.0778,
3.1568

149.9126, 3.4221,
12.0536

 14.4509, 4.7630,
2.4818

164.9530, 2.9782,

 8.1119, 4.7627,

13.0017

2.2613

180.4652, 2.4985,
13.9715

0.0000, NaN, NaN

0.0000, NaN, NaN

■ 70.5648, 5.2092,
6.8417

■ 70.5648, 5.2092,
6.8417

■ 64.1630, 12.8547,
8.9447

■ 77.3390, -2.1151,
4.8766

■ 58.1982, 20.8205,
11.1847

■ 84.4263, -9.1362,
3.0338

■ 52.7581, 29.0328,
13.5449

■ 91.7847, -15.8925,
1.2992

■ 47.9470, 37.3033,
15.9696

■ 95.9948, -19.5626,
0.3758

■ 43.8820, 45.2689,

18.3457

■ 40.6785, 52.3646,
20.4919

■ 38.4200, 57.9084,
22.1857

■ 37.1142, 61.3555,
23.2453

■ 36.6206, 62.7095,
23.6633

Harmonies

Analogous

The Analogous color harmony consists of three colors that are next to each other on the color wheel.



70.5664, 5.6694, 2.3164



70.5648, 5.2092, 6.8417



70.5664, 2.3041, 10.3316

Triad

The Triadic color harmony groups three colors that are evenly spaced from another and form a triangle on the color wheel.



70.5664, 5.2071, 6.8429



70.5664, -10.8020, 9.2903



70.5664, -5.3473, -5.4837

Complementary

The Complementary color scheme is a pair of colors which are on the opposite of each other on the color wheel.



70.5648, 5.2092, 6.8417



77.1288, -12.3240, 1.4375

Split Complementary

Split-complementary colors differ from the complementary color scheme. The scheme consists of three colors, the original color and two neighbors of the complement color.



70.5664, -9.6435, -3.3312



70.5648, 5.2092, 6.8417



70.5664, -12.7361, 5.3326

Square

The Square scheme is like the rectangle color scheme, but the four colors are evenly spaced on the color wheel.



70.5664, 5.2071, 6.8429



70.5664, -6.9676, 11.6771



70.5664, -12.3178, 0.7014



70.5664, -0.5125, -5.0112

Rectangle

The Rectangle color scheme consists of four colors that form a rectangle on the color wheel.



70.5648, 5.2092, 6.8417



70.5664, -0.5823, 11.6980



70.5664, -12.3178, 0.7014



70.5664, -6.9002, -5.0379

Sweetspot

The Sweet Spot groups the original color and five complimentary colors.



70.5664, 5.2071, 6.8429



96.4495, -1.6986, 6.3965



71.4230, 9.7716, -5.3562



44.3164, -0.4662, 3.0445

0.0000, NaN, NaN



46.2646, -2.4686, 2.5136

Same Dimension

The Same Dimension uses a secret algorithm to generate beautiful new colors.



70.5664, 5.2071, 6.8429



86.2105, 9.6001, 9.4459



74.5341, -1.6937, 11.1223



34.3635, 1.2048, 2.8860



28.9107, 49.5060, 18.6813



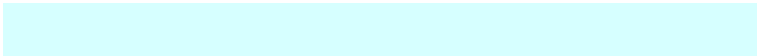
6.8369, 11.7039, 4.4178

Inverse Universe

The Inverse Universe completely reimagines the original color for something new.



77.1288, -12.3240, 1.4375



96.4690, -17.8367, 0.9854



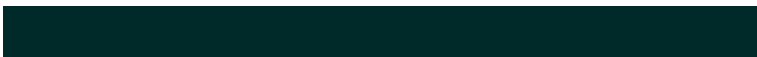
72.9281, -5.6223, -3.6759



36.6153, -4.8051, 1.0331



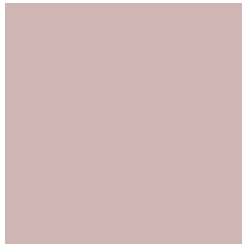
55.6291, -29.4868, -5.8779



13.1544, -6.9729, -1.3894

Previews

White Background



This preview shows how the HunterLab color 70.5648, 5.2092, 6.8417 looks on a white background.

Color Contrast Check

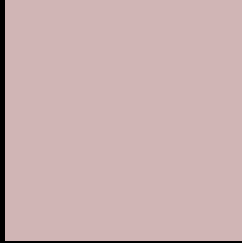
Large Text (above 18pt) WCAG AA × Fail

Any Text WCAG AA × Fail

Large Text (above 18pt) WCAG AAA × Fail

Any Text WCAG AAA × Fail

Black Background



This preview shows how the HunterLab color 70.5648, 5.2092, 6.8417 looks on a black background.

Color Contrast Check

Large Text (above 18pt) WCAG AA ✓ Pass

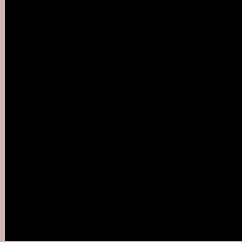
Any Text WCAG AA ✓ Pass

Large Text (above 18pt) WCAG AAA ✓ Pass

Any Text WCAG AAA ✓ Pass

If you want to check with other color combinations, try the [Color Contrast Checker](#).

HunterLab 70.5648, 5.2092, 6.8417 Background



This preview shows how black text looks on a background with the HunterLab color 70.5648, 5.2092, 6.8417.



This preview shows how white text looks on a background with the HunterLab color 70.5648, 5.2092,

6.8417.

Color Blindness Simulation

Color vision deficiency is a very complex topic, and I could not describe the different causes any better than Wikipedia does, so if you want to learn more, you should check out their [article about color blindness](#).

Dichromacy



Original Color

70.5648, 5.2092, 6.8417

Protanopia

70.4662, -2.4945, 5.2221

Deuteranopia

70.5648, 5.2092, 6.8417



Tritanopia

70.5635, 8.8747, 1.2446

Trichromacy



Original Color

70.5648, 5.2092, 6.8417

Protanomaly

70.4061, 0.2927, 5.6625

Deuteranomaly

70.5648, 5.2092, 6.8417

Tritanomaly

70.6201, 7.3477, 3.2244

Monochromacy



Original Color

70.5648, 5.2092, 6.8417

Achromatopsia

71.3359, -3.8063, 3.8758

Achromatomaly

70.9921, -0.5626, 4.9381

CSS Examples

Text

The CSS property to change the color of the text to HunterLab 70.5648, 5.2092, 6.8417 is called "color". The color property can be set on classes, ids or directly on the HTML element.

This example shows how text in the color `rgb(208, 181, 181)` looks like.

```
.text, #text, p{  
    color:rgb(208, 181, 181)  
}
```

If you want to add a text shadow in that color use the text-shadow property, you can generate a text shadow directly with our [CSS Text Shadow Generator](#).

Here you see how black text with a 4 pixel rgb(208, 181, 181) colored shadow looks like.

```
.shadow{ text-shadow: 4px 4px 2px rgb(208, 181, 181) }
```

Border

The CSS property to change the border of an element to HunterLab 70.5648, 5.2092, 6.8417 is called "border". The border property can be set on classes, ids or directly on the HTML element.

This example shows the color as border, it can be applied via the CSS property "border" or "border-color".

```
.border, #border, table{ border:4px solid rgb(208, 181, 181) }
```


If only the border color should be changed use the property `border-color`.

```
.border{ border-color:rgb(208, 181, 181) }
```

If you want to add a box shadow in that color use:

Here you see how a box with a 4 pixel `rgb(208, 181, 181)` colored shadow looks like.

```
.boxshadow{ -moz-box-shadow:4px 4px 4px  
4px rgb(208, 181, 181); -webkit-box-  
shadow:4px 4px 4px 4px rgb(208, 181, 181);  
box-shadow:4px 4px 4px 4px rgb(208, 181,  
181) }
```

Background

The CSS property to change the background color of an element to HunterLab 70.5648, 5.2092, 6.8417 is called "background". The background property can be set on classes, ids or directly on the HTML element.

```
.background, #background, body{  
background: rgb(208, 181, 181) }
```

If only the background color should be changed can be used:

```
.background{ background-color: rgb(208,  
181, 181) }
```

This example shows the color as background, it is applied via the CSS property "background".

To optimize and compress your CSS code, you can use our [online CSS compressor and optimizer](#) based on csstidy. If you want to create a linear or radial gradient as background or border, check our [CSS Gradient Generator](#).

Hey! You found this booklet interesting? Support Converting Colors with the new Membership Option!

The pro membership hides all ads, plus gives you double the colors in the color bucket, and more awesome pro features!

[Learn more, Memberships starting at \\$2.50/m!](#)

**Follow me
on Twitter!**

@ConvertingColor