

# Converting Colors

HunterLab(70.5826, 7.4883,  
12.5050)

Have a look what the booklet for  
HunterLab(70.5826, 7.4883,  
12.5050) contains.

<b>HunterLab(70.5826, 7.4883, 12.5050)</b> .....	3
<b><i>Conversions</i></b> .....	4
<b><i>Details</i></b> .....	6
<b><i>Harmonies</i></b> .....	12
<b><i>Previews</i></b> .....	24
<b><i>Color Blindness Simulation</i></b> .....	28
<b><i>CSS Examples</i></b> .....	31

# Color

**HunterLab(70.5826, 7.4883,  
12.5050)**

# Conversions

## Conversions Part 1

Format	Color
Hex	D9B3A8
RGB	217, 179, 168
RGB Percent	85%, 70%, 66%
CMY	0.1490, 0.2980, 0.3412
CMYK	0.00, 0.18, 0.23, 0.15
HSL	13°, 39%, 75%
HSV	13°, 23%, 85%
XYZ	51.8032, 49.8190, 43.9315
YIQ	189.1080, 26.1790, 4.6350

# Conversions

## Conversions Part 2

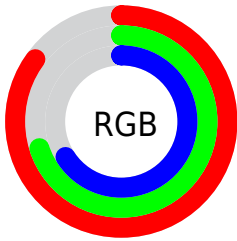
<b>Format</b>	<b>Color</b>
<b>R<sub>YB</sub></b>	217, 182, 168
Decimal	14267304
CIE Lab	75.96, 12.05, 10.76
CIE LCh	76, 16.156, 41.774
Yxy	49.8213, 0.3559, 0.3423
Android (android.graphics.Color)	4292457384 (0xFFD9B3A8)
YUV	189.1080, -10.4062, 24.4613
Hunter-Lab	70.5826, 7.4883, 12.5050

# Details

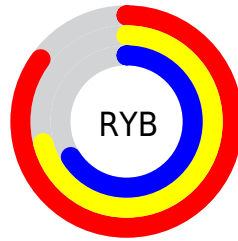
The HunterLab color  $70.5826, 7.4883, 12.5050$  is a light color, and the websafe version is hex  $CC9999$ . A complement of this color would be  $75.8127, -13.1970, -4.8546$ , and the grayscale version is  $71.4175, -3.8107, 3.8802$ .

A 20% lighter version of the original color is  $92.7385, -0.0970, 12.5108$ , and  $48.7440, 7.3874, 10.0673$  is the 20% darker color. If you saturate the color by 10%, you get  $65.3759, 13.3157, 15.7433$ , and if you desaturate by 10%, it is  $76.0661, 2.0018, 9.0687$ .

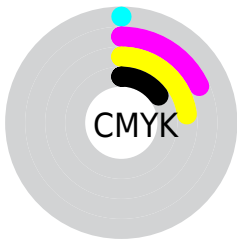
# Distribution



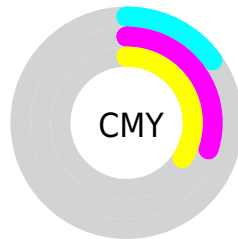
- Red (85%)
- Green (70%)
- Blue (66%)



- Red (85%)
- Yellow (71%)
- Blue (66%)



- Cyan (0%)
- Magenta (18%)
- Yellow (23%)
- Black (15%)



- Cyan (15%)
- Magenta (30%)
- Yellow (34%)

# Brightness & Saturation Gradients

These gradients show how the HunterLab color 70.5826, 7.4883, 12.5050 changes by changing the brightness by 10 percent. The first figure shows a shift by +10% for each color and the second figure -10%.

Similar to the brightness gradients but the following saturation gradients show a change of the HunterLab color 70.5826, 7.4883, 12.5050 by changing the saturation by 10% instead.




 70.5826, 7.4883,  
12.5050

 70.5826, 7.4883,  
12.5050

196.4604, 5.1055,  
23.3045

 59.3898, 7.4932,  
11.3430


 94.8209, 7.2886,  
14.8403

 48.8590, 7.4308,  
10.1768

 107.8043, 7.1088,  
16.0171

 39.0368, 7.2895,  
9.0003


121.3316, 6.8804,  
17.2030

 29.9785, 7.0571,  
7.8027

135.3815, 6.6064,  
18.3993

 21.7549, 6.7171,  
6.5662

149.9355, 6.2897,  
19.6069

 14.4615, 6.2450,  
5.2588

164.9766, 5.9327,

 8.1225, 6.0854,

20.8267

5.6857

180.4896, 5.5373,  
22.0591

0.0000, NaN, NaN

0.0000, NaN, NaN

■ 70.5826, 7.4883,  
12.5050

■ 70.5826, 7.4883,  
12.5050

■ 65.3759, 13.3157,  
15.7433

■ 76.0661, 2.0018,  
9.0687

■ 60.4820, 19.5003,  
18.7212

■ 81.7876, -3.1609,  
5.4745

■ 55.9507, 26.0186,  
21.3617

■ 87.7203, -8.0336,  
1.7553

■ 51.8370, 32.7999,  
23.5668

■ 93.8406, -12.6488,  
-2.0661

■ 48.2017, 39.6982,

■ 96.6911, -17.0453,

25.2230

1.2697

■ 45.1061, 46.4708,  
26.2194

■ 42.6032, 52.7736,  
26.4880

■ 41.1414, 56.8730,  
26.3468

# Harmonies

## Analogous

The Analogous color harmony consists of three colors that are next to each other on the color wheel.



70.5842, 11.1446, 6.6257



70.5826, 7.4883, 12.5050



70.5842, 0.8686, 15.8335

# Triad

The Triadic color harmony groups three colors that are evenly spaced from another and form a triangle on the color wheel.



70.5842, 7.4859, 12.5061



70.5842, -17.1469, 8.0615



70.5842, -0.7572, -11.1999

# Complementary

The Complementary color scheme is a pair of colors which are on the opposite of each other on the color wheel.



70.5826, 7.4883, 12.5050



75.8127, -13.1970, -4.8546

# Split Complementary

Split-complementary colors differ from the complementary color scheme. The scheme consists of three colors, the original color and two neighbors of the complement color.



70.5842, -8.2918, -10.7104



70.5826, 7.4883, 12.5050



70.5842, -17.5406, 0.9403

# Square

The Square scheme is like the rectangle color scheme, but the four colors are evenly spaced on the color wheel.



70.5842, 7.4859, 12.5061



70.5842, -13.2625, 13.4610



70.5842, -14.3619, -6.0818



70.5842, 6.2523, -7.3558



# Rectangle

The Rectangle color scheme consists of four colors that form a rectangle on the color wheel.



70.5826, 7.4883, 12.5050



70.5842, -4.2226, 16.3951



70.5842, -14.3619, -6.0818



70.5842, -3.3162, -11.5469

# Sweetspot

The Sweet Spot groups the original color and five complimentary colors.



70.5842, 7.4859, 12.5061



95.0725, -1.0611, 8.5273



68.7259, 19.4776, -7.8971



43.7911, -0.3165, 4.0669

0.0000, NaN, NaN



46.2646, -2.4686, 2.5136



# Same Dimension

The Same Dimension uses a secret algorithm to generate beautiful new colors.



70.5842, 7.4859, 12.5061



81.7746, 12.1996, 16.8606



77.6829, -4.8161, 19.5085



36.7742, 0.1639, 3.7582



32.2135, 43.6207, 20.6135



8.9571, 8.9187, 5.6754



# Inverse Universe

The Inverse Universe completely reimagines the original color for something new.



75.8127, -13.1970, -4.8546



89.2896, -17.5976, -8.1096



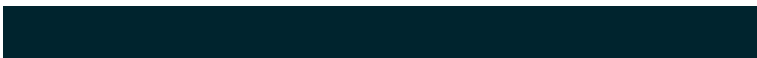
68.3691, -1.1731, -14.8203



37.8255, -3.9789, 0.2715



44.9554, -14.4664, -24.9615



11.9736, -4.4095, -5.4471



# Previews

## White Background



This preview shows how the HunterLab color 70.5826, 7.4883, 12.5050 looks on a white background.

## Color Contrast Check

Large Text (above 18pt) WCAG AA × Fail

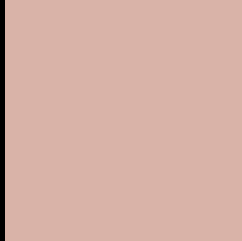
Any Text WCAG AA × Fail

Large Text (above 18pt) WCAG AAA × Fail

Any Text WCAG AAA × Fail



# Black Background



This preview shows how the HunterLab color 70.5826, 7.4883, 12.5050 looks on a black background.

## Color Contrast Check

Large Text (above 18pt) WCAG AA ✓ Pass

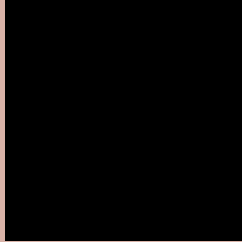
Any Text WCAG AA ✓ Pass

Large Text (above 18pt) WCAG AAA ✓ Pass

Any Text WCAG AAA ✓ Pass

If you want to check with other color combinations, try the [Color Contrast Checker](#).

## HunterLab 70.5826, 7.4883, 12.5050 Background



This preview shows how black text looks on a background with the HunterLab color 70.5826, 7.4883, 12.5050.



This preview shows how white text looks on a background with the HunterLab color 70.5826, 7.4883,

12.5050.

# Color Blindness Simulation

Color vision deficiency is a very complex topic, and I could not describe the different causes any better than Wikipedia does, so if you want to learn more, you should check out their [article about color blindness](#).

## Dichromacy



### Original Color

70.5826, 7.4883, 12.5050

### Protanopia

70.7026, -3.8969, 10.7687

### Deuteranopia

70.7256, 5.0277, 12.6129



## Tritanopia

70.6685, 13.2978, 3.3861

# Trichromacy



## Original Color

70.5826, 7.4883, 12.5050

## Protanomaly

70.5534, 0.1177, 11.0994

## Deuteranomaly

70.5449, 5.8973, 12.4373

## Tritanomaly

70.5978, 11.1573, 6.9834

# Monochromacy



## Original Color

70.5826, 7.4883, 12.5050

## Achromatopsia

71.3359, -3.8063, 3.8758

## Achromatomaly

70.8352, 0.1266, 7.0596

# CSS Examples

## Text

The CSS property to change the color of the text to HunterLab 70.5826, 7.4883, 12.5050 is called "color". The color property can be set on classes, ids or directly on the HTML element.

This example shows how text in the color `rgb(217, 179, 168)` looks like.

```
.text, #text, p{  
    color:rgb(217, 179, 168)  
}
```

If you want to add a text shadow in that color use the text-shadow property, you can generate a text shadow directly with our [CSS Text Shadow Generator](#).

Here you see how black text with a 4 pixel rgb(217, 179, 168) colored shadow looks like.

```
.shadow{ text-shadow: 4px 4px 2px rgb(217, 179, 168) }
```

## Border

The CSS property to change the border of an element to HunterLab 70.5826, 7.4883, 12.5050 is called "border". The border property can be set on classes, ids or directly on the HTML element.

This example shows the color as border, it can be applied via the CSS property "border" or "border-color".

```
.border, #border, table{ border:4px solid rgb(217, 179, 168) }
```



If only the border color should be changed use the property `border-color`.

```
.border{ border-color:rgb(217, 179, 168) }
```

If you want to add a box shadow in that color use:

Here you see how a box with a 4 pixel `rgb(217, 179, 168)` colored shadow looks like.

```
.boxshadow{ -moz-box-shadow:4px 4px 4px  
4px rgb(217, 179, 168); -webkit-box-  
shadow:4px 4px 4px 4px rgb(217, 179, 168);  
box-shadow:4px 4px 4px 4px rgb(217, 179,  
168) }
```

# Background

The CSS property to change the background color of an element to HunterLab 70.5826, 7.4883, 12.5050 is called "background". The background property can be set on classes, ids or directly on the HTML element.

```
.background, #background, body{  
background: rgb(217, 179, 168) }
```

If only the background color should be changed can be used:

```
.background{ background-color: rgb(217,  
179, 168) }
```

This example shows the color as background, it is applied via the CSS property "background".

To optimize and compress your CSS code, you can use our [online CSS compressor and optimizer](#) based on csstidy. If you want to create a linear or radial gradient as background or border, check our [CSS Gradient Generator](#).

Hey! You found this booklet interesting? Support Converting Colors with the new Membership Option!

The pro membership hides all ads, plus gives you double the colors in the color bucket, and more awesome pro features!

**[Learn more, Memberships starting at \\$2.50/m!](#)**

**Follow me  
on Twitter!**

@ConvertingColor